



RUNNING POWER LINE TO GEORGETOWN

## Power expansion is widespread

Another year of expansion and modernization throughout the Maritime Electric system was experienced during 1965 highlighted by the announcement made last September that an additional expenditure of \$4 million over the next three years to increase the company's generating capacity by 40 per cent would be made.

The increasing industrial and domestic demand for more power is a challenge to the electrical industry—a challenge demanding vigorous activity on the part of suppliers. That Maritime Electric Co. Ltd. is meeting this challenge is ample evidence that company officials are looking to the future with con-

confidence in the continued growth and prosperity of the Island.

Work is expected to begin early this year on the addition of a 20,000 kilowatt turbo-generator which will increase the capacity of the plant from the present 50,500 kilowatts to 70,500 kilowatts. Studies are currently being carried out on the feasibility of locations removed from the site of the present Charlottetown generating plant. It is hoped to have the new unit commissioned and on the line for service by the fall of 1966.

Officials estimate the new unit will enable the company to provide sufficient power for Island residents until 1973 at which time it is hoped to have

the causeway completed with a power cable attached and the company will then be an important partner in the proposed Maritime Power Grid.

### FINAL LINK MADE

In view of the rapid growth and development of industry and the increased demand for power in Kings County, 35 miles of transmission line from Charlottetown to Georgetown was completed during the past year. Constructed at a cost of over \$350,000 and capable of carrying 66,000 volts, the new transmission line forms the final link to create a loop system which makes available an alternate feed serving a large area of the County. A switching station at Lorne Valley and substations at Emerson and Scotchfort were also built in conjunction with the new line.

Through the co-operation of the Prince Edward Island Government, 36 miles of distribution lines were constructed under the Rural Electrification Program. Company construction

amounted to 100 miles and included 9 miles converted from single to three-phase at Miminegash to accommodate the new Moss Plant. Eight miles at Wilmot Valley was rebuilt from 2300 volts to 7200 volts and over five miles of distribution line capable of carrying 25,000 volts was built on Queens Road (Victoria Cross). Approximately 20 miles of pole movements was carried out during the year due to road and highway widening.

### NEW BUILDING

A new office building and storeroom was opened at Sherbrooke early last September which is providing a much more convenient facility for customers in that area for their business dealing with the company.

Maritime Electric has been experiencing an average yearly increase in power demand in recent year of about 10 per cent. The influx of new industries and increased domestic consumption through a wider use of applica-

## Industry receives boost in power

By J.W. LAVERS

GEORGETOWN — A 66,000 volt transmission line built by Maritime Electric Co. Ltd., from the Charlottetown generating plant to the Georgetown area was commissioned on Sunday, November 14, 1965, as the Georgetown substation transformer was installed and energized; the Summerville substation had al-

ready been energized. These facilities are mainly responsible for the

company's program of expansion, with its program of expansion, the company is demonstrating its confidence in the continued prosperity of the Island, and its belief in the further growth and development of its industries.

terations done and the cutting in of a new switch was also carried out at Gills Forge on the 48 Road, as part of the new line.

About 40 men were on the job the day the line was commissioned and they worked from 10 a.m. to 5 p.m. and areas affected were from St. Peter's to Souris and East Point to Alberry Plains in Montague through to the Wood Islands area; Dingwells Mills to Cardigan and Georgetown areas. With the completion of the new Georgetown substation the power necessary to take care of the growth load and to supply the Georgetown industries of Gulf Garden Foods Ltd., and Bath-

urst Marine Ltd., is now flowing through the transmission line to the industries in Georgetown.

To be known as number four transmission line and built at a cost of over \$350,000, the line is initially energized at 33,000 volts with a capacity of 5,000 kilowatts. The company has experienced a load growth over the past several years of 11 per cent annually as compared with the national average of eight per cent.

### ALTERNATE FEED

This factor combined with the influx of new industry in the eastern part of the Province had made it necessary to provide the area with a loop system by means of which an alternate feed is available when required.

For this purpose, a \$15,000 switching station was built at Lorne Valley. A switching station at Sherbrooke provides the western end of the Island with a loop system.

In addition two new substa-

tions were built at Georgetown and Scotchfort. The Georgetown station cost \$20,000 and is now in operation and the \$22,000 Scotchfort station was expected to be in operation shortly after the Georgetown station. Between 100 and 125 acres of woodland was cleared for construction of number four transmission line, which was begun early in 1956.

### ACROSS COUNTRY

About half of the 33½ mile long line which involved placing 619 pole structures was built across country, with the remainder following existing country roads.

Delta Electric Ltd., of Fredericton, N.B., received the \$47,000 contract for construction of the line. Actual work on the erection of the line began early in June of 1965.

Initially the line will have a capacity of 5,000 kilowatts, which will gradually be increased to

12,000 kilowatts over the next 10 years, as the use of electricity and load growth increase in the area.

Engineers in charge of construction for Maritime Electric were, Eric Arsenault and George Hoffstra of Montreal engineering Co. Ltd., consulting engineers.

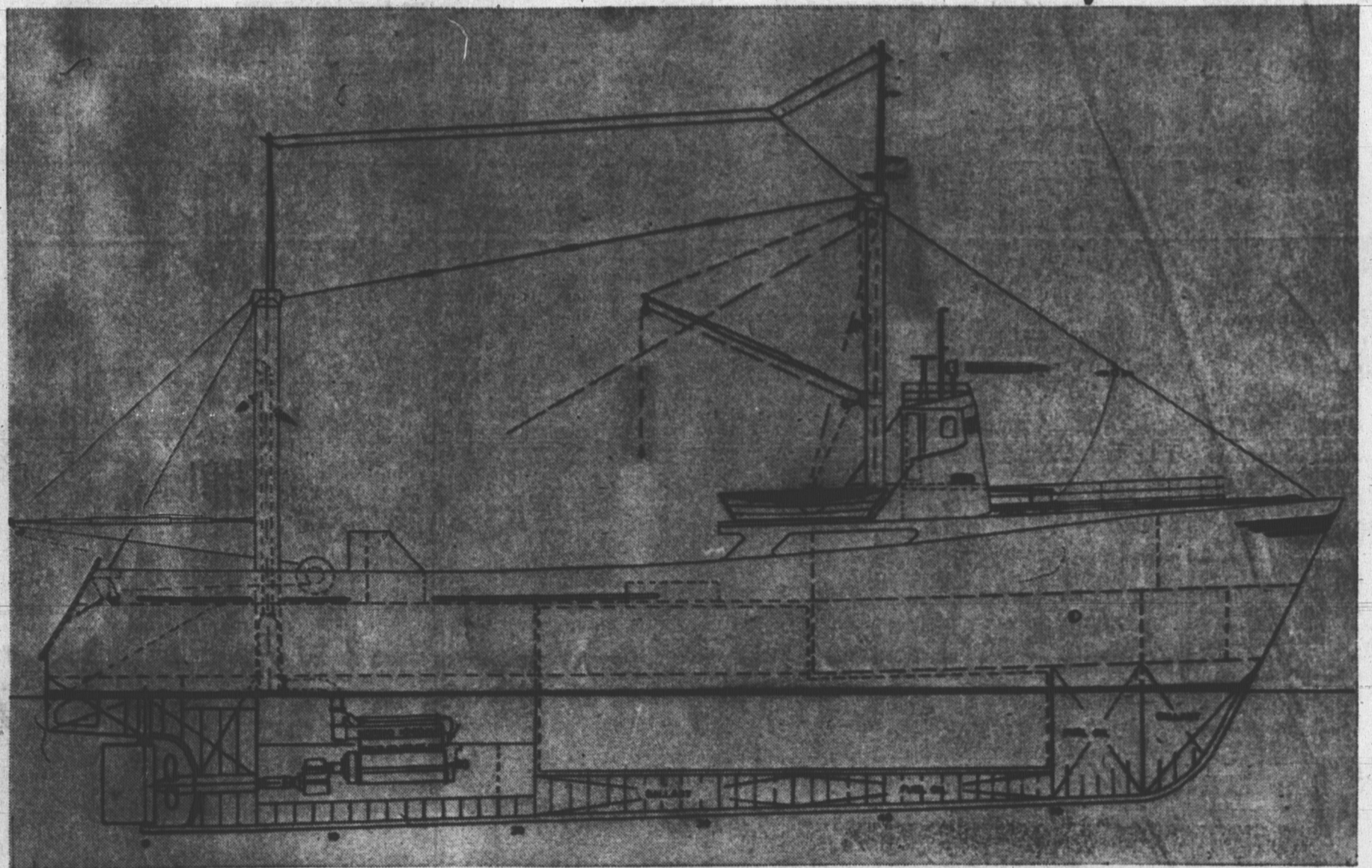
## Fire claims youngster

BADGER, Nfld. (CP)—Dennis Abbott, 4, died Tuesday in a fire that destroyed the single-storey frame home of his parents here.

His mother, Mrs. Mark Abbott, and an infant were taken to hospital at Grand Falls for treatment of minor burns.

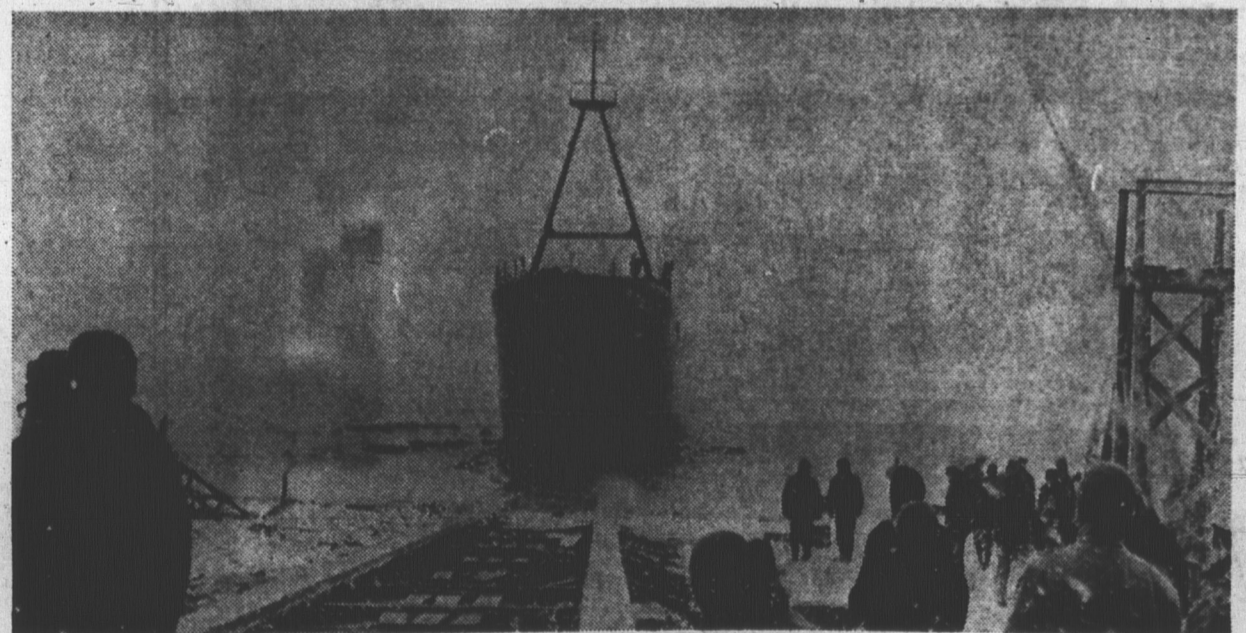
# Bathurst Marine Ltd. Shipbuilders

## Progressing With One Of P. E. I.'s Largest Industries!



Profile of the 129 feet long steel stern trawlers which were designed in Prince Edward Island for Gulf Garden Foods Ltd. of Georgetown, P. E. I. Nine of these ships, the most modern fishing vessels in Canada, will be built by Island craftsmen in the next three years.

## Steel Stern Trawlers From Bathurst Marine Ltd.!



Undaunted by wintry weather, Georgetown Shipyard workers launch the first steel trawler built on the Island in blizzard conditions on the high tide following harbour dredging, December 11th, 1965.

# BATHURST MARINE LTD.

GEORGETOWN

P.E.I.

## NOW!

With Halliday's Packaged Home, you get all the materials in just one order. No running out of materials, no extra trips to the mill. Here are just two. Many other Packaged Homes available.

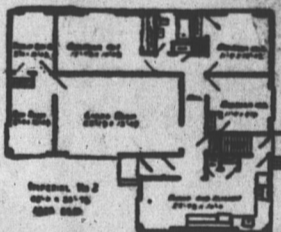
Write for Halliday's Catalogue of homes and cottages. Ask for free catalogue of building bargains.



### The IMPERIAL

48'0" x 36'7 1/2"

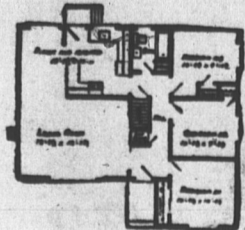
COMPLETE PACKAGE \$5473.00  
READY CUT



### The CORNERBROOK

37'6" x 31'6"

COMPLETE PACKAGE \$4094.00  
READY CUT



## BOATS - BOATS - BOATS

### FISHERMAN'S SKIFF

3 sizes . . . . . Built Up or Ready-Cut

As Low As \$29.50

An ideal boat for the angler. Well made of waterproof Douglas Fir plywood over a sound spruce frame. Designed by Naval Architect Edwin Monk. It's suitable for mounting on outboard motor.

#### Boat "A"

- 9'6" BUILT-UP . . . . . 62.00
- 9'6" READY-CUT . . . . . 37.00
- 11'6" BUILT-UP . . . . . 84.00
- 11'6" READY-CUT . . . . . 57.50

#### Boat "B"

- 7'6" BUILT-UP . . . . . 49.50
- 7'6" READY-CUT . . . . . 29.50

**HALLIDAY** Craftsmen LIMITED  
ARTHUR ST., TRURO . . . 4475