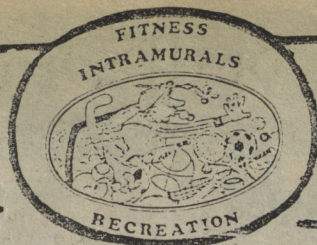


UPEI

OPEN TO ALL



REPORT FOR INFO 566-0606

INSTRUCTION

AEROBIC EXERCISE CLASS -
 MONDAY & WEDNESDAY 5:15 - 6:15
 MAIN GYMNASIUM
 INSTRUCTOR: DAGMAR CEPICA

FENCING CLUB -
 SATURDAY MORNING 9:00 - 12:00
 MAIN GYMNASIUM
 INSTRUCTOR: LOTHAR ZIMMERMANN

RIFLE CLUB -
 WEDNESDAY NIGHT 7:00 - 10:00
 RCMP RANGE
 CONTACT: DAVE SEELER 566-0906

WEIGHT TRAINING -
 WEIGHT ROOM OPEN 8am - 10:00pm
 INSTRUCTION AND ORIENTATION AVAILABLE
 CALL 566-0606

ANNOUNCEMENTS

INTRAMURAL ENTRIES FOR:
 Men's Basketball
 Women's Basketball
 Men's Hockey
 Coed Volleyball
 WILL BE COMING UP IN EARLY OCTOBER
 SO NOW IS THE TIME TO START TO FORM YOUR TEAM.

UPCOMING EVENTS

TENNIS TOURNAMENT -
 BEGINNERS AND INTERMEDIATE DIVISIONS
 ENTRY DEADLINE FRIDAY SEPT. 22 12:00 noon. Entries can be phoned to 566-0606
 TOURNAMENT BEGINS MONDAY SEPT 25

COED SLOW PITCH TOURNAMENT
 SATURDAY SEPTEMBER 30th - day
 TEAMS MUST HAVE MINIMUM OF 4 FEMALE MEMBERS
 FACULTY, RESIDENCE, SOCIETY OR PICK UP TEAMS WELCOMED
 ENTRY DEADLINE MONDAY SEPT 25th
 REFEREES: EARN EXTRA \$\$\$'s BY BEING AN OFFICIAL IN INTRAMURALS. IF YOU ARE INTERESTED SEE BARR MULLALLY IN GYM

Comic Quest

Jeff "T.H." Smith

On April 30th 1989, I blinked. Early this morning I looked at a calander. Where did the summer go? What did I do? I'll tell you, I spent a large amount of time and money hunting the ultimate comic collection. Generally the comics I want are scarce, but with patience anything is possible.

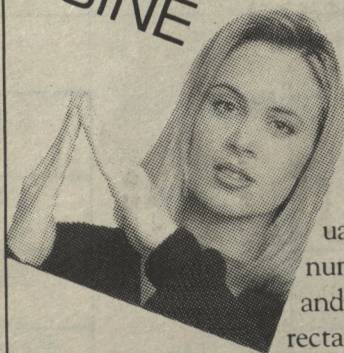
What should I talk about in my column? I'd like to get some ideas, comments, even arguments. I'd also like to know if anyone on campus collects comics. If so, what kind, how serious, what certain titles?

So, if you have anything to say about comics, drop a note off at the Gem to get in touch with me.

A higher form of engineering and science requires a higher form of calculator.

The further you go in engineering, math and other technical courses, the more you need a scientific calculator that speeds you through complex problems. With 254 powerful advanced scientific functions, the TI-68 from Texas Instruments is both a smart choice and an exceptional value.

SINE



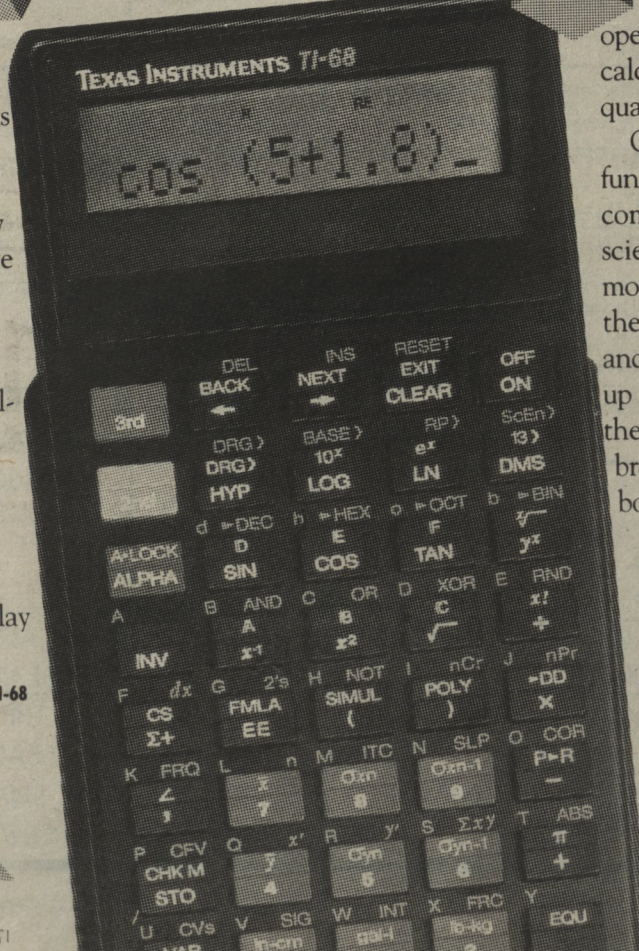
The TI-68 easily solves up to five simultaneous equations with real or complex coefficients... evaluates 40 complex number functions... and allows polar and rectangular forms for entries and results. A convenient feature lets you last equation replay check your

answers without re-entering them. Formula programming provides up to 440 program steps for as many as 12

user-generated formulas. Perform operations in four number bases, one- and two-variable statistics, and Boolean logic operations. The polynomial root finder calculates real and complex roots of quadratic, cubic or quartic equations.

Only the TI-68 delivers so much functionality, value and ease in one compact, advanced scientific tool. For more information on the TI-68's features and functions, pick up a free copy of the TI-68 technical brochure at your bookstore.

For more information on the TI-68's features and functions, pick up a free copy of the TI-68 technical brochure at your bookstore.



TEXAS INSTRUMENTS

WIN A TI-68! SEE YOUR CAMPUS BOOKSTORE FOR CONTEST ENTRY FORMS.

For the dealer nearest you, call:
 Ont. 416-884-9181 Que. 514-336-1860 Alb. 403-245-1034 BC. 604-278-4871

© 1989 Texas Instruments Inc.