

Even Small Home Can Contain An Extra Bath

According to builders, architects, and homeowners themselves, the extra bath has become standard equipment in most modern homes. Such additional facilities are possible in remodeled homes, too. Even the small home can accommodate an extra bath as a powder room, points out the Canadian Institute of Plumbing and Heating. Although the recommended size of an average family bathroom is 6' x 8', dimensions such as 5' x 5', 3' x 6', or 5' x 6' can be equally comfortable and convenient.

Streamlined and compact plumbing fixtures have done much to facilitate the installation of extra bathrooms in older or smaller houses. In most any home a space can be found for a powder room or wash room, if not for a full bathroom. The Institute suggests there are many places which are potential areas for this purpose.

You might consider space taken from a master bedroom to build a connecting bathroom; or an unused area at the end of a hall. An oversized coat closet or the space provided by two coat closets, which happen to back up, might be the answer. Sometimes a pantry will serve. By building cabinet into the kitchen the pantry is made available for use as a bathroom or powder room. If the existing bathroom is unnecessarily large, it can be split into two bathrooms, back to back. Even a portion of a porch or breeze way is worth thinking about and another possibility is to have a bathroom or a half bath installed in a basement or in an attic.

Whatever you have in mind it is wise to first consult an experienced plumbing contractor before you plan. He is able to recommend the best fixtures to choose and the best usage of the space you have available. Most important of all, his knowledge of piping availability in your walls and floors will be a valuable help in keeping your costs at a minimum.

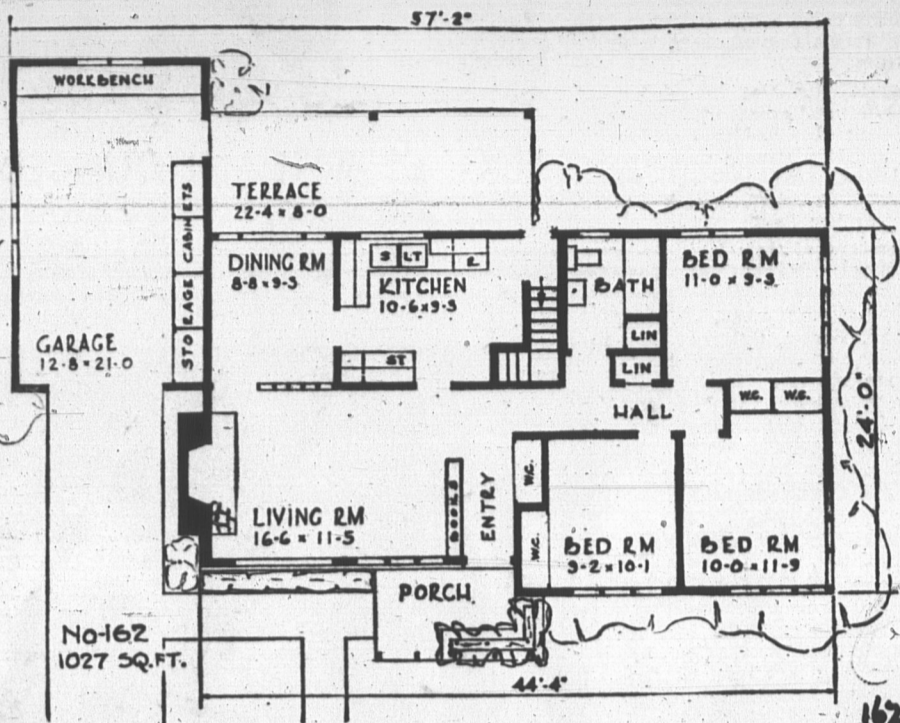
A.W. Gaudet Chairs Meeting

President A. Walthen Gaudet chaired a meeting of the United Fund Board of Directors in the Board Room of Riverside Hospital Wednesday evening. Progress reports of the campaign organization and the public relations committee were presented. The members were briefed on the techniques to be used in the campaign and every one present signed a pledge of intent to give his or her 'fair share' to the fall campaign.

Executive director, Jack Ambler, presented each member with a gold lapel check pin, the symbol of 'fair share' giving to United Fund. Mr. Gaudet expressed pleasure in having all Board members as the first to be wearing this new symbol. A resolution from the Maritime Regional Conference was discussed and approved. The executive director was authorized to write to the various levels of government with a copy of the resolution and urging acceptance of its recommendations. The main recommendation in the resolution is that all fund raising campaigns of a voluntary nature on P. E. I. be required to publish through the news media a copy of their annual financial statement. This requirement will ensure that the donating public would know what had happened to the money they subscribed. Public accountability is felt to be essential in all voluntary supported organizations.

POET DIES

MONTREAL (CP) — Betty Warshaw, 51, well-known Montreal poet and playwright, died Tuesday after a long illness. She was best known for her children's stories and plays, written under the name of Betty Shaw. She is survived by two sisters.



Fine styling is exemplified by such features as variation in roof angles, plus a raised ceiling in the Living Room, with a row of windows over the rear roof section. These admit daylight from both sides of the room, and also permit a light cover for indirect lighting the length of the Living

Room. Dining Room is separated by an indoor trellis partition. There are three large Bedrooms with ample closet and linen space. Kitchen is convenient to back entrance and basement. Construction is Frame but instructions for building in Brick Veneer are supplied. Design is suitable for electric heating.

HOW TO OBTAIN DESIGN BOOK

The latest design book entitled "101 Selected Suburban and Country Homes, Designed for Canadians," is now available at the offices of The Guardian and The Evening Patriot for \$1. tax free. This new edition includes color selection, etc., plus over 100 popular new designs to choose from. Also included are full designs in how to order blueprints.

CRACKED PLASTER WALL

QUESTION: In our living room there is a crack in the plaster wall, running from the top of the archway between the kitchen and living room clear up to the ceiling. It isn't wide, but it certainly looks terrible. Can I repair this myself?

ANSWER: This is a perfectly possible repair even though you've never tried this type of job. Spackle and a putty knife are the only tools. Mix the compound (it's like a plaster) into a fairly stiff paste and simply spread it over the crack, using the putty knife. Do this several times, to make sure some gets worked inside the crack. Smooth it level, and when it has dried, you can go ahead and repaint. Spackle is available at any paint or hardware store, and the simple directions are on the box.

DUSTY CONCRETE

QUESTION: Our basement floor is constantly dusty, though I try to sweep it every day. Even so, dust gets tracked up stairs every time anyone goes down there. Can you help?

ANSWER: Mop a liquid concrete hardening preparation on the floor. Let it dry, then repeat. This will stop the dusting. Some of these are made in various colors, so you also apply a finish. Available at lumber yards, masonry supply dealers, most hardware stores. (Note: All correspondence relating to home maintenance should be addressed to: Roger C. Whitman, c/o Toronto Star Syndicate, 80 King Street W., Toronto 1, Ontario.)

REPORT GUERRILLA WAR LISBON, Portugal (AP)—Intensified fighting is reported in Portuguese Guinea, especially along the borders of Senegal and the republic of Guinea. Portugal is waging an anti-guerrilla war in its African territories of Mozambique, Angola and Guinea.

PURITY DAIRY
"Parents Prefer Purity Products"
317 Kent St. Dial 4715

WORTH'S
PHARMACY
QUALITY DRUGS
SERVICE
SAVINGS
We Dispense any Prescription
J. E. H. Worth
1914 Reg. Pharm.
Free Delivery and Mail Service.
142 Prince St. Phone 4-3424
— 40 Years in Business —

We Trade
Home and Auto
* Furniture
* Televisions
* Appliances
FIRESTONE
Ltd.
Dial 4-5547

Free! 300-page Schwann Catalogue
from
RECORD CLUB OF CANADA
62 Richmond St. W., Toronto 1

SCHWANN RECORD CATALOGUE—This independently published reference to all LP's currently in print—over 30,000 is yours FREE. This catalogue contains separate sections for classical, popular, ballet, opera, musical shows, folk music, jazz, etc., and lists a separate section for all new releases. Schwann is the acknowledged authority used by the record industry. SCHWANN lists all records of all manufacturers. Over 250 labels—CAPITOL, DECCA, RCA, VICTOR, COLUMBIA, ANGEL, LONDON, MERCURY, VANGUARD, MCM, KAPP, ABC PARAMOUNT, ALL OTHERS!

WHO IS RECORD CLUB OF CANADA
Here is truly the only Record Club in Canada with NO RESTRICTIONS OR OBLIGATIONS—ONLY BENEFITS. THERE IS NO CATCH.
• Choose any LP (Mono or Stereo) on any label! No exceptions!
• No "quota" to buy! Order when you want, what you want, as many as you want.
• Save—never, less than 30% off list... often up to 55%. e.g. All \$3.20 LP's for \$3.64 and all \$4.20 LP's for only \$2.94. These are the lowest consistent prices in Canada.
• Best sellers at extra special prices—up to 45% off list, e.g. Receive the current club magazine which lists over 250 latest \$5.20 LP's for \$2.86.
• Every record brand new, first quality, factory fresh—or guaranteed fully returnable! Tapes available at similar discounts.
Record Club of Canada, 62 Richmond St. W., Toronto 1

Mail Coupon Today
Record Club of Canada,
62 Richmond Street West,
Toronto 1, Ontario.

Send me my FREE SCHWANN CATALOGUE, your CLUB MAGAZINE, ORDER FORM and complete information on the Record Club of Canada. I am under no obligation to purchase any records but those that I do will be at prices of at least 30% off list and up to 55% off list.

Name _____
Address _____
City _____ Prov. _____

First Aid For Ailing Houses

By ROGER C. WHITMAN

CLEANING STATUE
QUESTION: I have a small alabaster statue, about a foot high. It is somewhat stained, and I would like to get it clean again. Gentle washing with soap suds and detergents is not effective. What else could I use?

ANSWER: Make a weak solution of oxalic acid — one ounce dissolved in a quart of water—and wipe this on. Allow this to remain for a couple of minutes, then wipe it off with clear water. If necessary, repeat the treatment. This treatment will also work on ornaments made of marble as well as alabaster.

HOLLOW-DOOR CORE
QUESTION: The closet door of our bedroom is so thin-walled I'm afraid if I hang anything on it the thin plywood will give way. But my wife would very much like to have a mirror on this door. Any ideas?

ANSWER: You can get expansion-type fasteners which are well able to do this job. They fit through a drilled hole, and the tighter you draw them with the screwdriver the wider they expand and distribute the weight. Don't try to hang a full-length mirror, though, unless you're sure the door itself and the hinges will be able to take it.

WORN FLOOR AREAS
QUESTION: Several small areas of heavy traffic on our oak living room floor have become worn. The finish is worn off, and it seems that some dirt is actually ground into the wood. I'm sure I could use a floor sanding machine and make the whole floor look better, but is it possible to avoid this? Can the worn areas alone be restored?

ANSWER: All you can do is try. Use wax remover for any remaining wax, denatured alcohol for any shellac, paint remover for varnish. If vigorous scrubbing — maximum suds, minimum water — won't get out the dirt, then try the sandpaper. Often the scrubbing is enough, once the protecting remains of the finish are removed.

ROOTS IN DRAIN PIPES
QUESTION: I read an article about roots that invade underground pipes, and block up drainage, but that flushing half a pound copper sulphate down any toilet fixture will dissolve the roots. How much and how often is this done? Is rock salt as effective? When should a roto-cleaner be used?

ANSWER: Use a half-pound of copper sulphate at a time, flushed down the last thing at night. This should be repeated every three weeks during the spring growing season, every three months the rest of the year. Rock salt will have no such effect on the roots; forget it. The roto-cleaner is used to clear away any initial blockage of roots, then subsequently it can be controlled by the copper sulphate. This cleaner, while the dissolving roots actually in the pipe

FUTURE PROPERTY VALUE
QUESTION: How can I know for sure if proposed freeway and airport expansion will affect resale value of my property?
ANSWER: Consult a realtor or chamber of commerce member who can quote from previous experience. Or lease a crystal ball in good working order

FOR ALL YOUR INSURANCE NEEDS
PHONE 894-6567
HYNDMAN & CO.
Limited
Established 1872
Offices: 57 Lower Queen St. CHARLOTTETOWN
also at Summerside — Montague — Alberton
"The Old Reliable"
Fire, Life, Marine, Auto and Guarantee Bonds of all kinds.

AFTER Inventory Sale

SCHURMAN
KENSINGTON SUMMERSIDE
CHARLOTTETOWN

SALE RUNS FROM SEPT. 12th Through SEPTEMBER 17th

At The Charlottetown Branch

Off Insect Repellent 5 oz. Each 75c	Chamois Sponges Small Each 25c Medium Each 45c Large Each 65c	Durite Wood Dough Surfacing Putty To Clear Less 20%
Spray Shine Auto Wax 14 oz. Each 98c	Sheff-Kote Gallon Each 5.39 5 Gallons 25.95	Odd Size Sashes Each 1.00
J-Wax Auto Wax 9 oz. Each 98c	Alumi-Roof Quart Each 1.29 Gallon Each 3.79	Odd Colours Asphalt Shingles Per bundle 2.00
Paint & Varnish Remover Pint Each 63c Quart Each 1.10 Gallon Each 3.25	Sherwin-Williams A100 Latex House Paint, Discontinued colours To Clear Less 20%	All Bar-B-Q Tools and accessories To Clear Less 20%
		All Garden Tools To Clear Less 20%
		Berry Garage Door 8'0" x 6'6" Each 55.95

At The Summerside Branch

4 sheets FORMICA V-100, damaged. Sheet 10.00	3/8" x 1 1/4" third grade MAPLE FLOORING c. sq. ft. 18.00	1 only RANGE HOOD — Ducted — 36" Regular 41.00 31.00
6 sheets Driftwood PLYWOOD Sheet 5.95	Odd size SASHES Each 1.00	1 only RANGE HOOD — Duct Free — 36" Regular 82.50 62.50
12 sheets Algonquin Birch PLYWOOD Sheet 12.95	Odd size Aluminum STORM WINDOWS each 10.00	FOLDING TABLE and CHAIR SETS No. 262. Regular 16.50. Set 11.95
12 sheets Tachamah Grey PLYWOOD Sheet 8.95	Used and odd size DOORS To Clear Less 30%	FOLDING TABLE and CHAIR SETS No. FC14. Regular 16.95. Set 12.95
8 sheets assorted prefinished PLYWOOD Sheet 13.30	12 only masonite faced BIFOLD DOORS each 5.00	Quick-Fire CHARCOAL LIGHTER each 60c
Assorted colours Miraplas and Windsor PLASTIC WALL TILE To Clear Less 50%	1 only 24" x 42" heavy sheet TWINDOW each 26.00	All BAR-B-Q TOOLS & ACCESSORIES Less 20%
	LIGHT FIXTURES Less 30%	RADAR LITE LANTERNS Regular 9.95. Each 7.95
	ALL GARDEN TOOLS Less 20%	

At The Kensington Branch

Discontinued colours TO CLEAR
KEM GLO SUPER KEM TONE LESS **20%** | **6 odd size ALUMINUM STORM WINDOWS** EACH **10.00**

SCHURMAN'S

Kensington Broadway Dial 267-3130
Summerside Eustane St. Dial 436-2265
Charlottetown Longworth Ave. Dial 894-7315