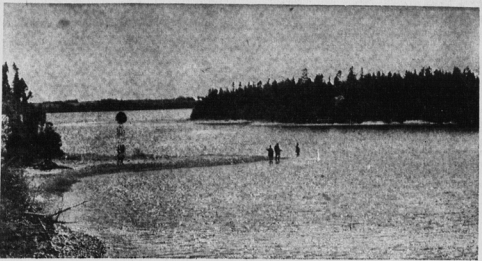


**SEVERAL HUNDRED IN EASY REACH**

# Ask anywhere for directions to choice fishing locations

There are several hundred places to fish in this Province, and some, but not all of them, are listed below. All can be reached by way of some village or populated center located on the main highways. To reach any particular spot, the visitor has only to drive to one of the villages or towns listed and obtain directions from the people in the town or village. He will find them most co-operative.

**Freelton:** - Route No. 8 Seal Pond and Stream.  
**QUEENS COUNTY**  
**Frederick:** - Route No. 2 Parsons' Pond, Millville



TROUT ABOUND IN ISLAND'S MANY STREAMS AND PONDS

**Tipish:** - Route No. 2 Black Pond, Tipish River, Little Tipish River, Haywood's Mill Dam, Blanchard's, Nail Pond, Skinner's Pond.  
**Elmsdale:** - Route No. 2 Minningog Pond, Elmsdale Pond, Skinner's Pond.  
**Albion:** - Route No. 2 Round Pond, Marchbank's Pond and Stream, Alder River, Gordon's Pond, Mill River East, Hardy's, Metherell's.  
**Bloomfield:** - Route No. 2 Long Creek Bridge, Gard's Brook, McAusland's Mill Dam and Stream.  
**OLARY:** - Route No. 2 Gard's or Marchbank's Mill (Howland), Little Pierre Jacques River, Big Pierre Jacques River and Mill Dam, Glenwood, West Point.  
**Freeland:** - Route No. 12 Bank's Pond.  
**Portage:** - Route No. 2 Elmore, Beaudin's, Foster River, Goff's Bridge.  
**Ellendale:** - Route No. 1 Popular Grove.  
**Richmond:** - Route No. 1 Sheep River (Victoria West), Fitzgerald's Mill, Spry's Side Stream, Grand River.  
**Egmont Bay:** - Route No. 11 Arsenault's Pond.  
**St. Nicholas:** - Route No. 2 Perry's Pond.  
**Summerside:** - Route No. 2 At Summerside, complete information about fishing conditions can be obtained at the Summerside Tourist Bureau.  
**Kensington:** - Route No. 2 Warree's Mill (Burlington), Conant's Mills (Park Corner), Campbell's Pond (Park Corner), Brander's Pond, Found's Mills (New London).  
**Troy:** - Route No. 20 Hunter's Pond.  
**Burlington:** - off Route 20 MacLeod's Pond.  
**Wilmet:** - Marchbank Pond.  
**Middleton:** - Route No. 1A Wright's Pond.  
**Wellington:** - Route No. 2 Barlow's Pond.  
**Troy:** - Route No. 1 Caragher's Pond.  
**Bedeque:** - Route No. 1A The Dune River.

**St. John's:** - Route No. 1 Me-Crawood.  
**Leod's:** (Crapaud Village); Leod's (North Tryon) MacDon-ald's Pond.  
**Gunn's Bridge:** - Route No. 2 Hunter River Pond and Stream; Campbell's Stream (New Glas-gow), Campbell's Pond (New Glasgow).  
**St. Andrew's:** - Route No. 2 The "S" at St. Andrew's; McEwen's Mills; Cherry Hill; Leard's Pond (Piquet); McPherson's Pond (Clarkton); Piquet; Point de Roche.  
**Charlottetown and vicinity:** Garra's Stream and M. A. Marshall's Pond; (Covehead Route 23 and 6); Winter River - Suffolk; Corran Ban Bridge - Route 6; North River Causeway - Route 1; Johnson's River; Brazill's Pond and Bridge; Glenin-lake (Rainbow Trout); Andrew's Pond - East Royalty.  
**National Park:** - Route No. 6 Cousins' Pond (Cavendish); Carr's Pond and Dalry Lake (Stanhope).  
**Vernon River:** - Route No. 3 Red Mills; Vernon River Stream; Vernon River Causeway; Melish Pond (beyond New Perth); MacLean's Pond.  
**Albany Plains:** - Route No. 3 MacMillan's Pond.  
**Roseberry:** - Roseberry Twin's Pond.  
**KINGS COUNTY**  
**Morell:** - Route No. 2 Grant's Bridge; "The Forks" up stream from Grant's Bridge;  
**Mooney's Bridge:** Indian Bridge.  
**St. Peter's:** - Route No. 2 Hay River (via North Shore road); Quigley's Mill.  
**Sugar:** - Route No. 2 B. I. Pond; Priest Pond; Gowar Brae Mill Pond; Norris' Pond.  
**Souris Line Road:** - Off Route 16 MacIntyre's Pond.  
**Flat River:** - Route No. 2 Flat River Bridge (via Vernon River Bridge); Hughie McPherson's Mill.  
**Montague:** - Route No. 3 Brudenell River (Brudenell); Electric Light and Power Dam; Montague; The Montague River; The Old Power Dam, Montague; MacRae's Mills and Stream (Heatherdale); Sturgeon Bridge; Harvey Moore's Sanctuary; Sutherland's Pond.  
**Cardigan:** - Route No. 3 Seal River; Mitchell River; The Cardigan River (both sides including Wilson's Point, etc.); Murray River; - Route No. 4 Finlay's or Lecco's Mills; McLure's Mills.  
**Belle River:** - Route No. 4 Belle River; Compton's By-Pass Pond at head of Belle River.  
**Riverton:** - Off Route No. 22 Craze's Pond; Leard's Pond, East Baltic; - Off Route No. 15 Dixon's Pond.  
**Woodville Mills:** - Off Route No. 5 Fitzpatrick's Pond.  
**Annandale:** - Off Route No. 5 Jenkin's Pond.  
**Selkirk:** - Off Route No. 2 Larkin's Pond.  
**New Perth:** - Route No. 4 Melish's Pond; Munn's Pond.  
**Peakes:** - Route No. 22 Mac-Aulay's Pond.  
**Albion Cross:** - Route No. 2 MacDonald's Pond.  
**Bridgetown:** - Route No. 3 Fishing is good off Bridge and farther down the river.  
**Annandale Pond:** - Off Route No. 5 To Dundas then to Annandale.  
**St. Georges:** - Off Route No. 5 via Cardigan Morris on's Pond; Grand River near Sam George's.  
**Corrville:** - Off Route No. 3 MacDonald's Pond.  
**Mitchell River:** McKenzie's Pond.  
**Glen Marilla:** - Off Route No. 4 MacPherson's Pond.  
**Murray Harbor:** - Route No. 18 Machon's Beach (the Bucks wheat Wharf) and Beach Point, Jordan's Pond.  
**Elmira:** - Route No. 16 East Lake; North Lake. Good when fish are running.  
**LICENCES**  
 Fishing licenses are obtainable at Prince Edward Island Travel Bureau, the Department of Industry and Natural Resources in Charlottetown, all Royal Canadian Mounted Police offices, at various sporting goods stores, drug stores, and places where fishing equipment is sold.

**OPEN TARTAN CENTRE**  
**STIRLING, Scotland (CP)**—A Scottish tartans information centre has been opened here. It has information on clans and tartans dating back to the 18th century and already letters have been received from Canada and the United States.

**RESCUED RESCUERS**  
**LOWESTOFT, England (CP)**—This Suffolk resort's lifeboat was called out recently—to rescue a lifeboat. The Aberdeen, Scotland, boat had left Lowestoft after a refit and broke down with engine trouble.

For The Best In . . .

## HAND COLORED ISLAND SCENES

### CRASWELL PHOTO STUDIO

163 Gt. George St. Dial 4-9712

**VACATIONISTS... Here is one of P.E.I.'s BEST LIKED RESTAURANTS**

- CURB SERVICE
- SPACIOUS DINING ROOM

You'll find our food well prepared and served by experienced waitresses.

## TOWERS Restaurant

Malpeque Road 1 Mile from Ch'town

**STAY AT THE TOWERS MOTOR LODGE**

4 Bedrooms Opposite Towers Restaurant

**WELCOME TO Prince Edward Island AND TO GAUDET'S SAVE-EASY**

P.E.I.'s Most Colorful Event . . . **SUMMERSIDE'S "LOBSTER CARNIVAL" and LIVESTOCK EXHIBITION**

JULY 15-16-17-18-19-20

AN EVENT YOU'LL REMEMBER FOREVER

- Mammoth parade two miles long
- Bands galore
- Beauty Contest
- Harness Racing
- Midway and Vaudeville
- Top Livestock Show
- Eastern Canada's largest Fish Aquarium
- Handicraft Displays
- Land and Water Sports
- Lobsters fresh from the Ocean

**FEATURING:**

## DON MESSER and The Butcha Dancers

King of the CARNIVAL

### MR. LOBSTER

Delicious Lobster Suppers prepared and served daily.

and Oh So-o Good!

Enjoy food savings on all your picnic food when visiting Prince Edward Island. Islanders find that you get more for less money and you will agree with them after your first visit.

**GAUDET'S SAVE-EASY SUPER MARKET**

- Fresh meats of all types
- Top quality fruits
- Fresh Island vegetables
- Large selection of frozen foods
- Daily Fresh Bread and Pastries

**AMPLE PARKING**

## GAUDET'S SAVE-EASY

GRANVILLE ST. SUMMERSIDE