

ELECTION SALE

BIG SAVINGS IN SUITS -- TOPCOATS and FURNISHINGS

Sale Friday and Saturday

Yes, we've held our Sale back until after the election in order to give everyone an equal chance at these Terrific Bargains.

THIS SALE DEFINITELY DOES NOT OPEN UNTIL FRIDAY MORNING



TOPCOATS

100% ALL WOOL
GABARDINE

34.50

WOOL & RAYON
GABARDINE

TOPCOATS

22.95



Suit Special

Suits regularly worth up to \$60.00
In Gabardines, Plain Worsted and Stripes.

34.50

8 ONLY—MEN'S SUITS
in
Blue and Grey Flannel

14.95



Gabardine Pants

Five Colors - All Sizes

6.95

VAN HEUSEN, ARROW and TOOKE SHIRTS

White and Colored Regularly Worth up to 5.00

Special

3.50

DIAMOND SOX

Regular 2.50

Special **1.89**

TIES

Dozens to choose from

89c each

100% All Wool
Jacquard
COAT SWEATERS
6.95

SPORT SHIRTS—by Tooke
Short Sleeve Style—Reg. \$4.95
Friday and Saturday Special
2.95

SPORT COATS

20% off

MOORE & McLEOD limited

Here are turkey feeds with high-energy formulas that give you faster growth, better finish and more pounds of meat per bagful.

**CAFETERIA
TURKEY
FEEDS**

These feeds are what you need for highest turkey profits. Starter pellets in form of "Crumbles" . . . grower in pellet form prevents waste. Open formula on the top.

Nash Introduces Three New Models

TORONTO, April 27 — Nash Motors of Canada, Ltd., today introduced three new Nash Rambler models on the Canadian market, including a Convertible Sedan, Station Wagon and Suburban. The new cars are an addition and do not replace the Ambassador or Canadian Statesman.

According to H.C. Doss, vice-president in charge of sales, the new 5-passenger Custom Ramblers include at no extra cost such deluxe appointments as: an electrically operated top, Weather-Eye Conditioned Air System, radio, one-piece windshield, direction signals, electric clock, special upholstery, foam cushions and other features. Super Suburban models include Weather Eye and radio as standard equipment.

The new Ramblers offer up to 30 miles per gallon (more with over-drive), ease of parking and nimbleness in traffic without sacrificing top performance on open highways, Doss said. The Rambler Convertible is a luxurious Custom model, with an electrically operated fabric top. The new car combines much of the safety of an all-steel sedan, with the recreational advantages of an open car. New overhead

safety protection is accomplished with two heavy steel side rails framing the top of side windows. An integral part of the body, these overhead chrome-trimmed rails also form a strong structural bridge-beam for extra body rigidity. They also carry the built-in tracks for the electrically operated top and serve as attractive frames for the side windows.

The electric driving mechanism of the fabric top operates on aircraft-type, nylon coated steel cables. These are attached to the top for push-button control. The flexible plastic rear window folds without damage and can be removed entirely (zippers) for summer driving with the top up.

The new Rambler Custom Station Wagon and Super Suburban models are designed as utility vehicles for owners needing extra capacity for passengers or cargo. The rear seat in both models pulls forward, rear side of backrest is steel and becomes part of the floor for use when long objects are to be carried.

Mechanically, the new Ramblers are the same. Advanced engineering has been applied to a new type front end suspension steering. They have the shortest turning radius of any similar cars (18 feet, 7 inches). Longitudinal coil springs at the front, extra long and flexible, are relocated at the heavy steering knuckles to take direct vertical loads. Low frequency spring action is controlled

by four direct-acting airplane-type shock absorbers.

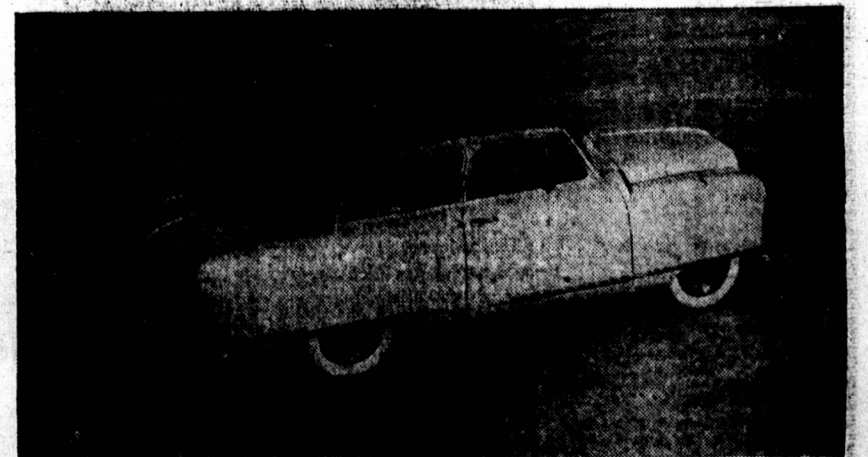
The Airflyte-type unitized-body-and-frame construction on the Rambler models results in a lower silhouette and lower centre of gravity without loss of front or rear head room or leg room. The all-steel body has box section sills for exceptional rigidity and strength. The Airflyte Construction eliminates unnecessary weight, and is forever free of squeaks and rattles.

The new Ramblers have an 100 inch W.B., overall length 176 in., maximum width 73½ in., 82 horsepower, 6 cylinder, L-head engine with a displacement of 173 cubic inches; a compression ratio of 7.25:1; a bore of 3½ inches and a stroke of 3¼ inches. With reduced axle ratio (3.78:1), and only 30.5 pounds per horsepower to move, performance in traffic or on the highway is outstanding.

**WAKE UP
MORNINGS
LIKE A CAVE MAN**

Get relief from constipation—indigestion. Positive results from FRUIT-A-TIVES proven by tens of thousands. FRUIT-A-TIVES contains extracts of fruits and herbs.

'Rambler' Features Safety, Beauty



The new Nash Rambler custom convertible offers full-size five-passenger accommodations. Exterior appearance is highlighted with sweeping front-to-rear fender lines. The Rambler revives the name of one of America's first mass produced cars first built in 1928 at Nash Motors' Kenosha, Wisconsin plant. It claims new standards of safety. The car offers the protection of two heavy steel rails overhead at the top of side windows. These safety rails also form a strong

structural bridge-beam for extra rigidity of the Airflyte body. Priced below the lowest of today's five-passenger convertibles, it includes at no extra cost about \$200 worth of custom appointments including: electrically operated top, Weather Eye conditioned air heater, radio, one piece windshield, direction signals, clock, rubber foam cushions and many others.