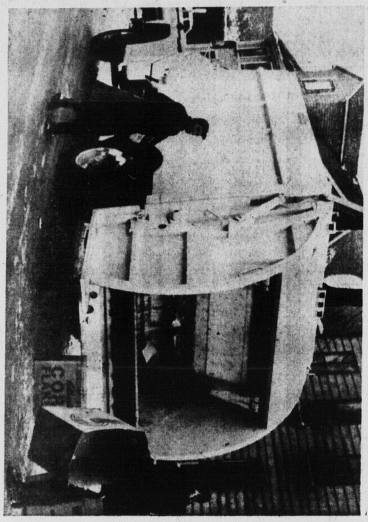
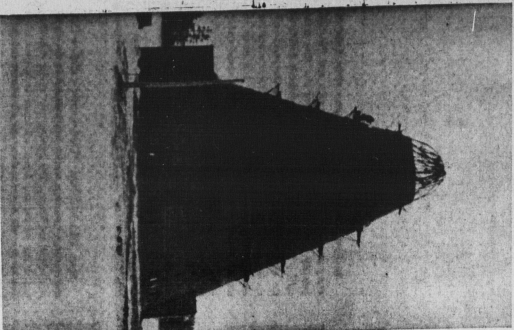


Highlights of 1963

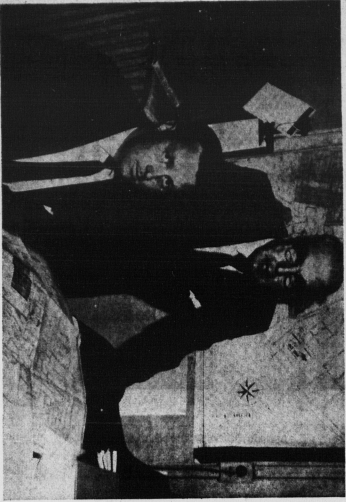


Perhaps one of the most aggressive forward steps taken during the entire year was the decision to establish a compulsory garbage collection service. The service now awaits only the completion of the large type incinerator (at left) before getting fully underway. When fully operational, the service will provide twice-a-week pickup of garbage for city residents and will be extended to other areas on a cost basis. The private firm to which the collection contract was let purchased two trucks as the type shown above.

Another indication of Chandler's growing progressive outlook was the appointment of a new executive director James Fox, former lieutenant governor and city council member, by a well known city man Mr. Fox had with him, Saul Jones, N. B. 10th before coming to the Island capital.

The city embarked on a new tax assessment survey during the year that will be completed for 1964. Purpose of the assessment recouping is to eventually provide a more realistic assessment on city properties.

The city became more public relations minded during 1963 and realizing good public relations is an important part of any program of city government for distinguished visitors. A wide variety of items are available for the public. The Agriculture Minister Harry Hays receiving a gift at City Hall will be re-elected many times.



Mayor sees year of progress

Mayor A. Wilburn Gaudet in his report said: "Years ago, this city might have been a remote, isolated town. Today, it is a progressive city. I assume that a report on the progress of your city would be most interesting to you for my part I would like to share with you as follows:

The city council has again attempted to give sound and all inclusive civic affairs here. Total civic revenues climbed to \$1,000,000. The city's net surplus on ordinary business ran to \$1,000,000. The city tax rate remained unchanged at 3.35.

It is a fact that since time the city has had a surplus of \$1,000,000. This represents an increase in 1963 of \$90,000. This represents a 10 per cent increase in the city's net surplus on ordinary business for the year.

The city's net surplus on ordinary business for the year was \$1,000,000. This represents an increase in 1963 of \$90,000. This represents a 10 per cent increase in the city's net surplus on ordinary business for the year.

The city's net surplus on ordinary business for the year was \$1,000,000. This represents an increase in 1963 of \$90,000. This represents a 10 per cent increase in the city's net surplus on ordinary business for the year.

The city's net surplus on ordinary business for the year was \$1,000,000. This represents an increase in 1963 of \$90,000. This represents a 10 per cent increase in the city's net surplus on ordinary business for the year.

The city's net surplus on ordinary business for the year was \$1,000,000. This represents an increase in 1963 of \$90,000. This represents a 10 per cent increase in the city's net surplus on ordinary business for the year.

The city's net surplus on ordinary business for the year was \$1,000,000. This represents an increase in 1963 of \$90,000. This represents a 10 per cent increase in the city's net surplus on ordinary business for the year.

The city's net surplus on ordinary business for the year was \$1,000,000. This represents an increase in 1963 of \$90,000. This represents a 10 per cent increase in the city's net surplus on ordinary business for the year.

The city's net surplus on ordinary business for the year was \$1,000,000. This represents an increase in 1963 of \$90,000. This represents a 10 per cent increase in the city's net surplus on ordinary business for the year.

The city's net surplus on ordinary business for the year was \$1,000,000. This represents an increase in 1963 of \$90,000. This represents a 10 per cent increase in the city's net surplus on ordinary business for the year.

has now gone forward to 136. The city's net surplus on ordinary business for the year was \$1,000,000. This represents an increase in 1963 of \$90,000. This represents a 10 per cent increase in the city's net surplus on ordinary business for the year.

The city's net surplus on ordinary business for the year was \$1,000,000. This represents an increase in 1963 of \$90,000. This represents a 10 per cent increase in the city's net surplus on ordinary business for the year.

The city's net surplus on ordinary business for the year was \$1,000,000. This represents an increase in 1963 of \$90,000. This represents a 10 per cent increase in the city's net surplus on ordinary business for the year.

The city's net surplus on ordinary business for the year was \$1,000,000. This represents an increase in 1963 of \$90,000. This represents a 10 per cent increase in the city's net surplus on ordinary business for the year.

The city's net surplus on ordinary business for the year was \$1,000,000. This represents an increase in 1963 of \$90,000. This represents a 10 per cent increase in the city's net surplus on ordinary business for the year.

The city's net surplus on ordinary business for the year was \$1,000,000. This represents an increase in 1963 of \$90,000. This represents a 10 per cent increase in the city's net surplus on ordinary business for the year.

The city's net surplus on ordinary business for the year was \$1,000,000. This represents an increase in 1963 of \$90,000. This represents a 10 per cent increase in the city's net surplus on ordinary business for the year.

The city's net surplus on ordinary business for the year was \$1,000,000. This represents an increase in 1963 of \$90,000. This represents a 10 per cent increase in the city's net surplus on ordinary business for the year.

The city's net surplus on ordinary business for the year was \$1,000,000. This represents an increase in 1963 of \$90,000. This represents a 10 per cent increase in the city's net surplus on ordinary business for the year.

The city's net surplus on ordinary business for the year was \$1,000,000. This represents an increase in 1963 of \$90,000. This represents a 10 per cent increase in the city's net surplus on ordinary business for the year.

The city's net surplus on ordinary business for the year was \$1,000,000. This represents an increase in 1963 of \$90,000. This represents a 10 per cent increase in the city's net surplus on ordinary business for the year.

we all the needs of our city in our community. Representing our 25 per cent share of that responsibility. The progress of the city is a reflection of the progress of the community.

The city's net surplus on ordinary business for the year was \$1,000,000. This represents an increase in 1963 of \$90,000. This represents a 10 per cent increase in the city's net surplus on ordinary business for the year.

The city's net surplus on ordinary business for the year was \$1,000,000. This represents an increase in 1963 of \$90,000. This represents a 10 per cent increase in the city's net surplus on ordinary business for the year.

The city's net surplus on ordinary business for the year was \$1,000,000. This represents an increase in 1963 of \$90,000. This represents a 10 per cent increase in the city's net surplus on ordinary business for the year.

The city's net surplus on ordinary business for the year was \$1,000,000. This represents an increase in 1963 of \$90,000. This represents a 10 per cent increase in the city's net surplus on ordinary business for the year.

The city's net surplus on ordinary business for the year was \$1,000,000. This represents an increase in 1963 of \$90,000. This represents a 10 per cent increase in the city's net surplus on ordinary business for the year.

The city's net surplus on ordinary business for the year was \$1,000,000. This represents an increase in 1963 of \$90,000. This represents a 10 per cent increase in the city's net surplus on ordinary business for the year.

The city's net surplus on ordinary business for the year was \$1,000,000. This represents an increase in 1963 of \$90,000. This represents a 10 per cent increase in the city's net surplus on ordinary business for the year.

The city's net surplus on ordinary business for the year was \$1,000,000. This represents an increase in 1963 of \$90,000. This represents a 10 per cent increase in the city's net surplus on ordinary business for the year.

The city's net surplus on ordinary business for the year was \$1,000,000. This represents an increase in 1963 of \$90,000. This represents a 10 per cent increase in the city's net surplus on ordinary business for the year.

The city's net surplus on ordinary business for the year was \$1,000,000. This represents an increase in 1963 of \$90,000. This represents a 10 per cent increase in the city's net surplus on ordinary business for the year.

MAJOR A. W. GAUDET has our good friends in the Charlotte Board of Trade. Dr. R. G. Lee, again took a lead in the educational side of the 3600 children in attendance at the first time in the history of the city. The city's net surplus on ordinary business for the year was \$1,000,000. This represents an increase in 1963 of \$90,000. This represents a 10 per cent increase in the city's net surplus on ordinary business for the year.

The city's net surplus on ordinary business for the year was \$1,000,000. This represents an increase in 1963 of \$90,000. This represents a 10 per cent increase in the city's net surplus on ordinary business for the year.

The city's net surplus on ordinary business for the year was \$1,000,000. This represents an increase in 1963 of \$90,000. This represents a 10 per cent increase in the city's net surplus on ordinary business for the year.

The city's net surplus on ordinary business for the year was \$1,000,000. This represents an increase in 1963 of \$90,000. This represents a 10 per cent increase in the city's net surplus on ordinary business for the year.

The city's net surplus on ordinary business for the year was \$1,000,000. This represents an increase in 1963 of \$90,000. This represents a 10 per cent increase in the city's net surplus on ordinary business for the year.

The city's net surplus on ordinary business for the year was \$1,000,000. This represents an increase in 1963 of \$90,000. This represents a 10 per cent increase in the city's net surplus on ordinary business for the year.

The city's net surplus on ordinary business for the year was \$1,000,000. This represents an increase in 1963 of \$90,000. This represents a 10 per cent increase in the city's net surplus on ordinary business for the year.

The city's net surplus on ordinary business for the year was \$1,000,000. This represents an increase in 1963 of \$90,000. This represents a 10 per cent increase in the city's net surplus on ordinary business for the year.

The city's net surplus on ordinary business for the year was \$1,000,000. This represents an increase in 1963 of \$90,000. This represents a 10 per cent increase in the city's net surplus on ordinary business for the year.

The city's net surplus on ordinary business for the year was \$1,000,000. This represents an increase in 1963 of \$90,000. This represents a 10 per cent increase in the city's net surplus on ordinary business for the year.

The city's net surplus on ordinary business for the year was \$1,000,000. This represents an increase in 1963 of \$90,000. This represents a 10 per cent increase in the city's net surplus on ordinary business for the year.

MAJOR A. W. GAUDET has our good friends in the Charlotte Board of Trade. Dr. R. G. Lee, again took a lead in the educational side of the 3600 children in attendance at the first time in the history of the city. The city's net surplus on ordinary business for the year was \$1,000,000. This represents an increase in 1963 of \$90,000. This represents a 10 per cent increase in the city's net surplus on ordinary business for the year.

The city's net surplus on ordinary business for the year was \$1,000,000. This represents an increase in 1963 of \$90,000. This represents a 10 per cent increase in the city's net surplus on ordinary business for the year.

The city's net surplus on ordinary business for the year was \$1,000,000. This represents an increase in 1963 of \$90,000. This represents a 10 per cent increase in the city's net surplus on ordinary business for the year.

The city's net surplus on ordinary business for the year was \$1,000,000. This represents an increase in 1963 of \$90,000. This represents a 10 per cent increase in the city's net surplus on ordinary business for the year.

The city's net surplus on ordinary business for the year was \$1,000,000. This represents an increase in 1963 of \$90,000. This represents a 10 per cent increase in the city's net surplus on ordinary business for the year.

The city's net surplus on ordinary business for the year was \$1,000,000. This represents an increase in 1963 of \$90,000. This represents a 10 per cent increase in the city's net surplus on ordinary business for the year.

The city's net surplus on ordinary business for the year was \$1,000,000. This represents an increase in 1963 of \$90,000. This represents a 10 per cent increase in the city's net surplus on ordinary business for the year.

The city's net surplus on ordinary business for the year was \$1,000,000. This represents an increase in 1963 of \$90,000. This represents a 10 per cent increase in the city's net surplus on ordinary business for the year.

The city's net surplus on ordinary business for the year was \$1,000,000. This represents an increase in 1963 of \$90,000. This represents a 10 per cent increase in the city's net surplus on ordinary business for the year.

The city's net surplus on ordinary business for the year was \$1,000,000. This represents an increase in 1963 of \$90,000. This represents a 10 per cent increase in the city's net surplus on ordinary business for the year.

The city's net surplus on ordinary business for the year was \$1,000,000. This represents an increase in 1963 of \$90,000. This represents a 10 per cent increase in the city's net surplus on ordinary business for the year.

PEAKE-MARTIN LTD.

Always at your service in
General Insurance
and
Real Estate

Charlotte
92 Queen Street
Phone 2-1261 for Insurance Phone 2-1264 for Real Estate

CHANDLER BROS. . . . SUGGEST YOU

JOIN THE MOVEMENT

TO

HOME IMPROVEMENT

HERE'S A SUGGESTION—
An Attractive Iron Hand Railing

What better year to fix up your home than Centennial Year 1964. . . . And, what better place to buy building materials than Chandler Bros. Ltd. For over 17 years Chandler Bros., has been selling "Better Living" for modern homeowners. Visit our spacious showroom and see this large selection of building materials and hardware now offered for every type of home improvement. Make us your one-stop building headquarters.

Home Improvements Pay Dividends in Comfort and Value

CHANDLER BROS. LTD.

Your Building Supply House of "Good Taste"

1 PLYWOOD PLACE

CHARLOTTETOWN

CHANDLER BROS. . . . SUGGEST YOU

JOIN THE MOVEMENT

TO

HOME IMPROVEMENT

HERE'S A SUGGESTION—
An Attractive Iron Hand Railing

What better year to fix up your home than Centennial Year 1964. . . . And, what better place to buy building materials than Chandler Bros. Ltd. For over 17 years Chandler Bros., has been selling "Better Living" for modern homeowners. Visit our spacious showroom and see this large selection of building materials and hardware now offered for every type of home improvement. Make us your one-stop building headquarters.

Home Improvements Pay Dividends in Comfort and Value

CHANDLER BROS. LTD.

Your Building Supply House of "Good Taste"

1 PLYWOOD PLACE

CHARLOTTETOWN