

Official Opening Spence & MacLeod Auto Body Works

Careful Planning Went Into Modernly Equipped Plant

THE BEST OF LUCK

and

DESERVED SUCCESS

to

SPENCE and MacLEOD LTD.

AUTO BODY WORKS

With their New and Modern Auto Body Shop.

BATT & MacRAE LTD.

AUTO ELECTRICAL SERVICE

91 Euston Street

Dial 6537



Shown above are Byron Spence (left) and Gordon MacLeod (right) the youthful owner and operators of Spence and MacLeod Ltd. Auto Body Works which officially opens today at 39 Eden Street, Charlottetown.

For several years Byron has been in charge of the John Beam Visualizer machine at the Horne Motors and Dowd Motors

The hopes of two young Prince Edward Island men become a reality today with the official opening of Spence and MacLeod Ltd. Auto Body Works at 39 Eden Street (just off the Malpeque Road), Charlottetown.

For Byron Spence and Gordon MacLeod this achievement marks the climax of several years of careful planning for a plant which would be completely equipped to handle all types of body work.

The opening of their body shop today means that Prince Edward Island has its first complete auto body plant, equipped to capably perform the following work: Frame straightening, wheel alignment and wheel balancing, all body repairs and paint jobs.

And inside their ultra-modern building they have the equipment to do these various jobs. They have the first and only wheel straightener in Prince Edward Island. Until now it has been necessary to send wheels out of the Province in order to have them straightened.

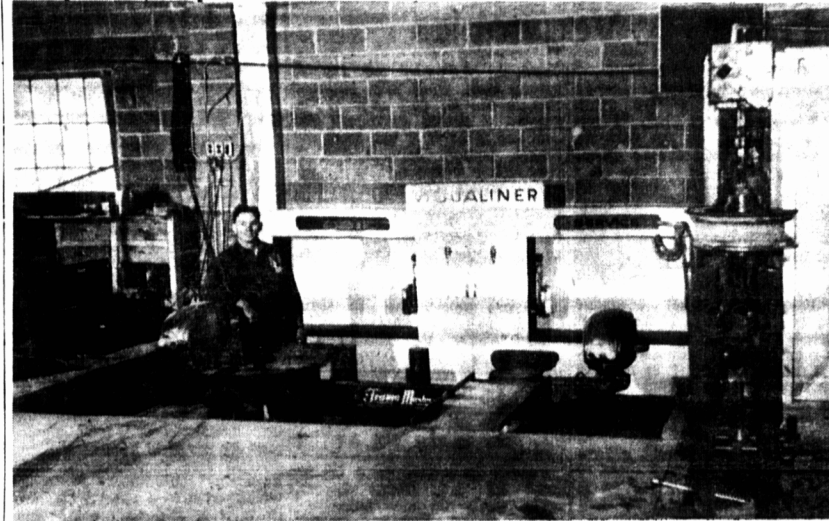
They are also equipped with the only custom frame straightener in the Province which is combined with modern John Beam Visualizer machine for lining up the front ends of automobiles and trucks.

Their paint shop is one of the most modern in the Province. It is extremely well lighted and is shadow free at all times. It is lighted by fourteen 300 watt light bulbs. Two hours after a car has been painted it will be ready for use by the customer.

All of these machines and facilities are housed in a concrete



Exterior of Auto Body Plant



Interior of Auto Body Plant

Our Sincere
CONGRATULATIONS
and
BEST WISHES
to BYRON SPENCE
and GORDON MacLEOD
ROY L. COLES
MILTON



CONGRATULATIONS
BYRON SPENCE
and
GORDON MacLEOD

on the opening of your new Auto Body Shop.
We are proud to announce that you are dealers for
Goodyear Tires.

For MORE GO IN SNOW it's the SUBURBANITE
Winter Tire by Goodyear.

ISLAND TIRE SERVICE

201 Weymouth Street

Dial 8525

CONGRATULATIONS

and

BEST OF LUCK

to

SPENCE and MacLEOD LTD.

AUTO BODY WORKS

on the opening of their new business

ROBINSON SUPPLIES LTD.

WHOLESALE AUTO PARTS
GARAGE AND SERVICE STATION EQUIPMENT
187 Queen Street Dial 6314

Congratulations

TO

Spence & MacLeod

ON THE OPENING OF THEIR NEW

AUTO BODY WORKS

STEEL SECTIONAL GARAGE
DOORS WERE SUPPLIED BY

H. W. PLETCH

SPRING PARK RD.

CHARLOTTETOWN

We Extend Best Wishes

for a

Very Successful Future to

GORDON MacLEOD

and

BYRON SPENCE

The Electrical Fixtures in their new Auto Body Shop
were supplied and installed by

GORDON GOOD

ELECTRICAL CONTRACTOR

16 Young Street

Dial 4775

We Congratulate

GORDON MacLEOD

and

BYRON SPENCE

and wish them

A Very Successful Future

It was a pleasure for us to drill the well and install
the pump in their new shop.

JOHN MOORE

14 Young Street

Dial 8308

building which is 60 feet long and 42 feet wide. The floor is of concrete, the walls of concrete blocks and the wooden roof is covered with aluminum. It is considered so fireproof that it has a low insurance rate for this type of business.

The two young men who own and operate this business have left no stones unturned in order to make this shop the best of its kind. They are now prepared to fix the body of any car regardless of its condition.

Byron Spence was born in Saskatchewan and moved to Hunter River with his parents in 1929.

In 1946 he commenced work with Horne Motors and after two years in the mechanical department he took over the operation of the John Beam visualiner. He continued to work with Dowd Motors after R.E. Dowd took over from Horne Motors and worked with Dowd's until opening his new business.

He is a son of Mr. and Mrs. S.B. Spence.

Gordon MacLeod served in the Navy for four years during the war and saw extensive service overseas on the destroyer Gatineau.

Following his discharge from

the Navy he went to work with the Canadian National Railways and in his spare time built an auto body shop at home where he did considerable work.

He is married to the former Jean VanDerstine of Eldon and the couple have four children. His mother is Mrs. John A. MacLeod.

BEST WISHES

For

EVERY SUCCESS

to

BYRON SPENCE

and

GORDON MacLEOD

For a complete line
of Windows, Doors and all kinds
of Building Materials see

REAGH BAGNALL

HUNTER RIVER

PHONE 15

THE FAIRBANKS MORSE
HEATING SYSTEM

And all general sheet metal work,
heating and plumbing
In The Modern, New
AUTO BODY SHOP OF

SPENCE and MacLEOD LTD.

was supplied

and

installed by

RICHARD RUTHART

SHEET METAL WORKER

40 Eden Street

Dial 9432

Congratulations to

Byron Spence and Gordon MacLeod

ON THEIR INITIATIVE AND ENTERPRISE

in building

THEIR FINE NEW AUTO BODY SHOP

The Cement Blocks, Cement Floor and all Concrete Work were supplied

and installed by

LARTER BROS.

CONCRETE CONTRACTORS

Kensington Road

Dial 9609

CONGRATULATIONS

AND GOOD LUCK

To SPENCE and MacLEOD LTD.

AUTO BODY WORKS

The Visualiner and Frame Straightener for this modern
new Auto Body Shop were installed by

COMMERCIAL EQUIPMENT LTD.

COMPLETE AUTOMOTIVE JOBBERS

Moncton, N. B.

It was a Pleasure to Supply

GORDON MacLEOD

and

BYRON SPENCE

With the Aluminum Roofing for their fine new Auto
Body Shop on Eden Street. Sincere congratulations

from

The

Rogers Hardware Co. Ltd.

We Extend

BEST WISHES

FOR EVERY SUCCESS

to

BYRON SPENCE

and

GORDON MacLEOD

in their new Auto Body Shop
It is our pleasure to supply them with paint for
their automotive needs.

RINSHED-MASON CO.

OF CANADA LTD.

Manufacturers of

Automotive, Industrial, Architectural, Marine and
Maintenance Finishes including Paints, Varnishes,
Lacquers, Enamels, Fillers and Stains.

P. E. I. Distributors

BATT & MacRAE LTD.

91 Euston Street

Phone 6537 - 6538