

# AI-bred breeders hit 50%

Slightly more than 50 per cent of Prince Edward Island's cows of breeding age are bred artificially. It has been learned from Dr. H. R. Kelly, provincial director of veterinary services. The total number has increased to 22,188 in 1962 from the 7,333 bred in 1956. There was a 4.4 per cent increase last year over 1961.

The plan was established in 1955 with the Eastern Prince or Summerside area unit set up June 8 of that year. The fee was set at not less than \$4 and not more than \$8 by an act of the legislature. Semen would be purchased from the New Brunswick Artificial Insemination Co-operative, and P. E. I. would have representatives on the sire selection committee.

The concept on rate of 66 per cent compares favorably with the committee's experience in other provinces. It is learned from Dr. Kelly who said there is general satisfaction with the program here which has grown from 1961 when some 48 per cent of Island cows were bred artificially, though some breeding problems are being encountered in two of the island's units.

Units are in operation at Cornwall, Crazeau, Eastern Kings, Eastern Prince, Hillsboro, Kensington, Montague, Morell, New Glasgow, O'Leary, Tyne Valley, York and West Prince.

**NINE BULLS**  
Nine bulls are in the New Brunswick - P. E. I. unit's bull battery at Fredericton from P. E. I. herds. There are two Holstein bulls from the herd of Oswald J. Newson and Son, Kingston and two from Cyril James herd at Pownal. One Jersey bull came from the herd of the late Edwin Lord, Summerside. Two Ayrshire bulls came from the herd of A. MacRae and Son, Sherwood, one Hereford sire from the herd of Tom and Miller Sanderson, North River and Dual Purpose Shorthorn sires from the herds of Daniel Jewell, North River and Waldron MacPhee, Elmwood. Added to the unit recently is a sire from a world famous

Ayrshire Scottish herd, Lensesock Celtic Event "which has been purchased by the Nova Scotia and the N. B. - P. E. I. units. The bull will remain at the Nova Scotia unit for two years, though semen will be available to breeders here, and then he will be moved to the unit at Fredericton.

Jersey cattle topped the list in percentage of animals settled with 73 per cent conception. Herefords ran 69 per cent, Holsteins 67, Angus 66, Dual Purpose Shorthorns 65, Scotch Shorthorns 62, Ayrshires 61 and Guernseys 60.

Calves of the Angus and Hereford breeds cannot be registered if bred artificially and permission has to be sought from the Shorthorn association, but it is usually given, Dr. Kelly said.

The Joint Dairy Breeds committee has recommended that regulations be enforced with which all units selling semen will be expected to conform. They will insist, for example, that the units be operated and controlled by breeders whom they are intended to service, and be carried on primarily for the improvement of cattle

and that any profits be expended in sire selection, research and development in so far as it is possible.

**YOUNG SIRE**  
The units must maintain and sample a substantial number of young sires with acceptable pedigrees, to acquire all the information available about the breeding abilities of those sires and to adequately publicize the good and the bad points that may be discovered, so as to provide breeders with the fullest possible information for determining a breeding program.



DR. KELLY

# Maritime Winter Fair finds 'home'

HALIFAX (CP)—After five years, Atlantic area livestock producers next fall will again have a showplace for their cattle.

The Atlantic Winter Fair, established with support of the City of Halifax, will fill a void left when the Maritime Winter Fair, a half-century-old exhibition, ended after fire destroyed

its headquarters in Amherst, N.S. A number of Maritime centres, including Halifax, negotiated with the Maritime Winter Fair backers to relocate. The attempt failed and Halifax went out on its own.

Don Oland, a Halifax businessman who spearheaded creation of the Atlantic fair and

now is its president, says: "Every major livestock group supports it. There are indications New Brunswick and Prince Edward Island farmers will enter and we are hopeful Newfoundland will follow."

The fair, aimed at stimulating interest in livestock production, will move into the city-owned forum and exhibition

buildings, once occupied by the Nova Scotia Provincial Exhibition which has since moved to Truro.

When the first fair opens in November it will be timed to precede by a few days Toronto's Royal Winter Fair. This will give Maritime farmers a chance to show their best in Ontario after exhibiting here.

# MEET OWEN.... The King Of Values



No, the King isn't farmer . . . WE DOUBT IF OWEN CAN EVEN DRIVE THIS TRACTOR . . . but when it comes to knowing quality clothing and how to save his customers hard earned cash, the KING really knows his values.

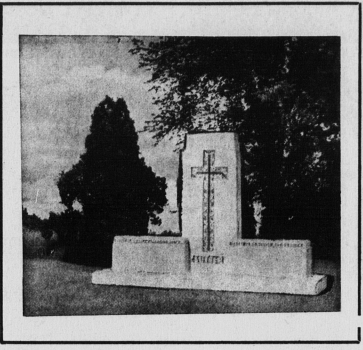
- |  |   |  |   |
|--|---|--|---|
| <p><b>Men's Zippers</b><br/>● 9 oz. denim<br/>● snap pockets<br/>made in Canada<br/>Reg. 5.98<br/>Discount Price <b>4.88</b></p> | <p><b>Men's Work Shirts</b><br/>● sizes 14 1/2 - 18<br/>● Grey, blue, forest green<br/>Reg. 2.98<br/>Discount Price <b>1.95</b></p> | <p><b>Men's Work Jackets</b><br/>● olive green<br/>● sizes 38 - 44<br/>● cotton twill<br/>Reg. 6.98<br/>Discount Price <b>4.95</b></p> | <p><b>Men's Heavy Duty Work Pants</b><br/>● grey, green, tan, forest green<br/>● sizes 28 - 38<br/>Reg. 6.98<br/>Discount Price <b>4.88</b></p> |
|--|---|--|---|

# STAR CLOTHING CO. LTD.

"THE ISLAND'S ONLY DISCOUNT STORE" Next to Canadian Tire Dial 4-8221

**MOTOR REWINDING & REPAIRS**  
Storey Electric Ltd.  
136 Prince St., Cn'to'ry  
DIAL 4-7341  
for 24-HOUR SERVICE

# Proud of your Family?



You can pay your family no greater tribute than to memorialize their names in enduring natural stone.

# VERE BECK & SON LTD.

Authorized Rock Of Ages Dealer  
Charlottetown Montague

# MORE and MORE FARMERS are TURNING To SHELL For FINEST PETROLEUM PRODUCTS



Yes it's true, more and more Farmers are turning to Shell for all their Petroleum Products . . . they find that Shell products give carefree satisfaction at low, low cost . . . High grade engine fuels give quicker starts, Motor Oils by Shell are leaders in their field, they resist acid action, promote trouble-free, lubrication. This spring when ordering your Farm Oil & Grease needs call your Shell agent!

## CHOOSE FROM THESE FINE SHELL PRODUCTS...

- SHELL X-100 MOTOR OIL
- SHELL MP GREASE
- SUPER SAFETY BRAKE FLUID
- SUPER SHELL GASOLINE
- SHELL DIESELENE
- SHELL STOVE OIL
- SHELL KEROSENE
- SHELL FURNACE FUEL



ALL SHELL TRUCKS EQUIPPED WITH 2-WAY RADIOS--

# Robert C. Barwise

# John W. Skinner

"Shell Oil Dealer for Charlottetown and West of Charlottetown."

"Shell Oil Dealer for Charlottetown and East of Charlottetown."

Malpeque Road

Dial 4-4316

Kensington Road

Dial 4-4044