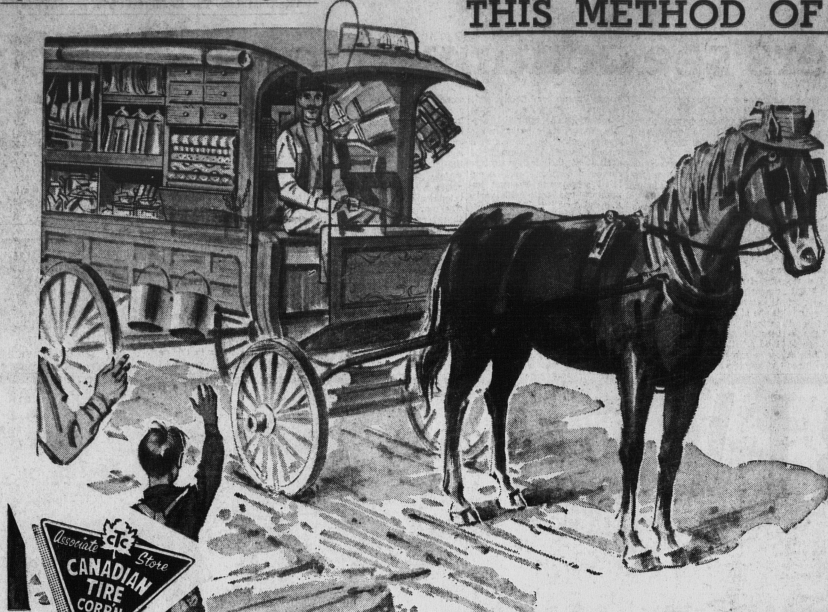


**THIS METHOD OF BUYING SUPPLIES IS GONE!
AND GONE FOR GOOD**

TODAYS FARMERS

Buy and SAVE at C.T.C.

The Canadian Tire Corporation gives you all the benefits of direct buying . . . assuring but small profit between factory and you **SAVE SAFELY** is our motto. This organization was conceived on an ideal, "To sell at the lowest possible price; consistent with originally-equipped quality". A money back Guarantee for all articles bought at the Canadian Tire Corporation and all our merchandise is rigidly inspected at the factory and by our own laboratory to give the utmost in satisfaction.



There's a Dry-Charge Power-Sealed

MOR-POWER BATTERY

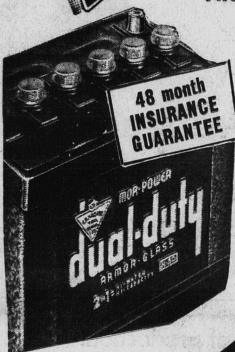
FOR EVERY CAR and TRUCK!

Power-Sealed "HI-CAPACITY" 48 MONTHS' INSURANCE-GUARANTEE Dry-Charge

Canada's most powerful, fastest moving battery—rated far higher than original equipment quality!

Did the sudden hard-starting, "sub-zero" weather of the past few days catch your battery napping? Will it see you through the remainder of winter? Will it stand up to the hard summer driving coming up? If not, replace it with the "hottest" battery buy in town — the Mor-Power HI-CAPACITY ARMOR-GLASS, and at Canadian Tire's WHOLESALE DISCOUNT SAVINGS!

The HI-Capacity is "vacuum-filled" with fresh battery power until you demand it—to deliver up to 34% more power to start with, to spin your zero-cold engine faster, up to 40% longer than "new-car" batteries. Guaranteed to do it for years to come . . . provide performance so outstanding you'll probably never need to buy another battery for your car. Get off to a good start—always—with MOR-POWER HI-CAPACITY ARMOR-GLASS.



EXCLUSIVE! GENEROUS! IRONCLAD! INSURANCE GUARANTEE

Comprehensive Road Hazard Insurance against Battery Failure from any normal driving hazard—including fire, accident, flood or breakage. Guarantee Insurance period—12 months to 48-months, depending on the type of battery. Customer pays for only service rendered.



BATTERIES
PRICED FROM **7.95** EXCHANGE

MORE MILK IN LESS TIME

* Let us Show you How! Ask for a demonstration at your barn, soon.



292.95

ONLY AT C.T.C.

Bigger Milk Cheques

Plug in this 60-cycle, 1/4 H.P. electric engine and milk . . . faster, cleaner and easier with the farm tested and proven National Double-Action Milker — Self-contained, completely portable . . . rugged, dependable, too! Takes the guess-work out of a machine milking. New improved "long-life" inflation test cups massage teats, stimulate faster "let down" and eliminates hand stripping. Adjustable vacuum lets you milk slow milkers faster. Transparent pails give full



2-COW MODEL Gentle "calf-nose" action

NO INSTALLATION EXTRAS TO BUY

visible milking. Enjoy all the advantages of the highest priced milker — yet your actual cost of the National Twin Unit is lower than most other single unit milkers!

- Soft rubber inflations . . . easy on the cow
- Rubberized ball-bearing wheels for off the floor sanitary milking
- No valves between cow and pail
- Vacuum gauge for each pail
- Pails ride on machine
- Only test cups carried to cow
- Constant speed pulsator — requires no adjustment
- low upkeep — few moving parts.



MASTER ELECTRIC FENCER 11.98

More features, and at a lower price, too! Provides unfailing service under all weather conditions — and does it continuously up to 5 months with one fence battery. Charges more miles of fence. Low maintenance, easy installation. Save time, work, money, by keeping livestock on pasture, separating stock, protecting crops and for many other uses. Heavy-gauge auto-body steel case. Baked enamel finish. 6-Volt. (Battery extra). Deluxe MODEL — As above but with ground rod attached to base, and flasher. (Battery extra) . . . **13.98**

MOR-POWER 6-volt FENCER BATTERY Regular duty 4.59

MOR-POWER EXTRA-HEAVY DUTY FENCER BATTERY Multi-cell, longer life construction; tested up to 5300 hours of continuous service 4.95

NYLON TIRES

For Compacts and Standard Cars
390/13 600/13 500/14 520/14 600/16
670/13 750/14 and Many Others.

8.88 ONLY WITH CLASS "A" TRADE not more than two-thirds worn. Add \$1.10 for tubeless.

FOR BIG CARS

11.99 ONLY WITH CLASS "A" TRADE not more than two-thirds worn. Add \$1.30 for tubeless.

GUARANTEED and ROAD HAZARD INSURED

1 COAT DOES THE WORK OF 2

SUPER-LASTIC

ONE COAT WHITE HOUSE PAINT

1-COAT WHITE HOUSE PAINT

Recommended for moderately weathered surfaces. Cuts painting costs in half; saves hours of painting time too. Tremendous hiding qualities; give lasting beauty, durability and weather-proof protection.

1.98 qt. 7.35 gal.

MASTER PAINTER'S QUALITY

BLEN-DIT

EXTERIOR HOUSE PAINT

A tough, durable paint specially formulated to withstand our rough Canadian winters and scorching summers. Superior covering and hiding qualities that will appeal to the thrifty home owner. Low cost tinting tubes give the choice of 72 popular decorative colours and whites.

TINTING BASE
Qt. . . 1.49 Gal. . . 4.89
OUTSIDE WHITE
Qt. . . 1.59 Gal. . . 5.25

Contains "TITANIUM" The Whitest White

ARMADA

EXTERIOR FINISHES

cleaning outside white, specially blended to provide long-wearing beauty for homes, fences or cottages. May be tinted in a wide colour range for pennies extra. Also available in ready-mixed cream, bright red, dark green, aluminium, also interior gloss; flat white and Floor and Trim colours.

1.05 qt. 3.59 gal.

Canadian Tire ASSOCIATE STORE

STEWART & MacRAE LTD.

76 QUEEN STREET DIAL 4-8569