



# Fall-Time Is Sportswear-Time For Girls Of Any Age!

Plan Your Separates Wardrobe

Around "TANYA"

Full Fashioned

## SWEATERS

Don't know where or how you would find a better basis for a Fall separates Wardrobe than our "Tanya" Sweaters. They're completely full fashioned and the authentic line is right for practically every occasion. Made in England of the finest of Botany wool the glorious range of colors include Pacific Yellow, Crayon Green, Walnut, Zircon, Racing Red, Barley Gold, Sherry, Navy and Black.



**SHORT SLEEVED PULLOVER**—In the classic style with double knit ribbed neckband, cuffs and waist band. Shrink resistant for season's of service. Colors as above. Sizes 34 to 40. Matches perfectly with Cardigan for Twin Sets. Priced each—

6.98

**LONG SLEEVED PULLOVER**—In the round necked classic style with full fashioning for excellent fit. Finely knit and in an array of colors as above. Dress up with jewelry or dress down with a bright scarf. Sizes 34 to 40. Priced each—

7.98

**CARDIGAN**—Classic style with double ribbed round neck, cuffs and waist band. Fronts are ribbon faced in self colors. Shades as above in sizes 34 to 40. Make up your own twin sets with either long or short sleeved pullovers. Priced each—

8.98

Plan Your Separates Wardrobe Around

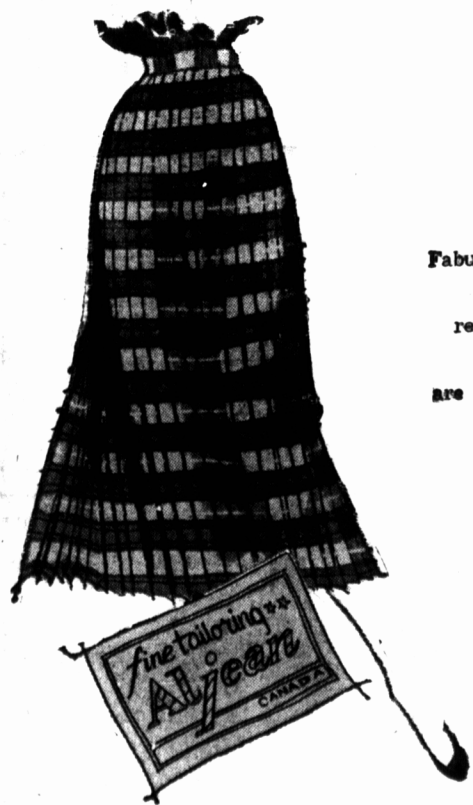
## "ALJEAN" SKIRTS

Fabulous pure wool flannels woven in England in authentic Scottish tartans are superbly tailored by Aljean into skirts on which you may plan your most outstanding and flattering costume. Aljean Skirts have a most enviable reputation for fabric, fit and appearance, they're fashion right for season's ahead. You may choose sleek all around pleats, stitched to the hipline or tailored kilt styles . . . all are available in your favorite Scottish Tartan. Sizes are 18 to 20, priced—

19.95

There Is A Wide Selection Of Other Skirts Priced 3.98 up

**HOLMAN'S** Both Stores **LADIES' WEAR**



Sprouts Blossom Out For Fall!

### TAILORED BLAZERS

Girls' Blazers of fine, pure wool, English flannel in single or double breasted styles. Navy or gray colors. The navy blazers are untrimmed and the gray ones have braid piping and crest.

Unlined, gray or navy in sizes 8 to 14, priced—  
4.98

Lined, navy in sizes 7 to 10, priced—  
8.98

Lined, navy in sizes 11 to 16, priced—  
9.98



Children's Blazers of English flannel, tailored in single or double breasted styles suitable for boys and girls. Single breasted styles have transferrable button tabs. Available in navy or gray shades with piping and breast pocket crest. Sizes 2 to 6x, priced—

3.98

### PURE BOTANY WOOL SWEATERS

Pullovers and Cardigans with ribbed round necks, long sleeve cuffs and waistbands. The shoulders are decorated with a novelty knit stitch. Colors are turquoise, red or navy in sizes 2 to 6. May be matched for twin sets, priced each—

1.98



Girls' Cardigans in a French spun zephyr knit (pure Botany wool). Classic style with button front, round ribbed neck, cuffs and waistband. Colors are navy, red or green. Ideal for school wear. Sizes 7 to 14, priced each—

3.98

### SKIRTS FOR EVERY GIRL

Shoulder strap style with all around pleats in an assortment of pink, blue or yellow plaids. The washable material is 60% Orlon with 40% wool. It is exceptionally serviceable for use aged 1 to 3, priced each—

2.98

Flared skirt of fine wale corduroy in blue, green or red color with nursery motif on skirt. Shoulder strap style with elastic back waistband and side button closing. Sizes 3 to 6x, priced each—

3.98

Straight Skirt with long walking pleat in centre back and double pleat in front. Back waistband is elasticised. Made of all wool flannel in gray or charcoal colors. Sizes 10 to 14x, priced each—

4.98

Smartly gathered skirt for school wear is made of all wool flannel in red, sand, blue or avocado shades. Waistband is elasticised in back with side button closing. Sizes 7 to 12, priced each—

6.98



### PLAYTIME IS SLACK TIME

"Slim Jim" style in a variety of plaid patterns of wool or corduroy with side zipper and belt. Elasticised waistband in back, two slash pockets. Sizes 7 to 14, priced a pair—

3.98

Regular style tailored of wool plaids in assorted patterns. Adjustable waistband with side button closing, side pockets and other features. Sizes 7 to 12, priced a pair—

4.98

Boxer style of plaid wool or corduroy in sizes 3 to 6x, priced a pair—

1.98

**HOLMAN'S** Both Stores **YOUTH CENTRE**

Celebrating

**BOND'S**

31st Anniversary

**SALE**

31 Cents Buys Extra Trousers

With Your Tailored-To-Measure

**SUIT**

**HOLMAN'S MEN'S WEAR**

Summerside

Style - Conscious Pumps Step Lightly Into Fall!

Luxurious Black Suede and Gleaming Onyx

Give You High-Style

Rich, soft black calf suede with an open toe is accented by a flat onyx instep bow and high French heels. They are flattering and compliment getting in a step-in style with light composition soles and heel lifts. Sizes and half sizes 5 to 8 in AA and B widths, priced a pair—

8.98



**HOLMAN'S** Both Stores **FOOTWEAR**