

EN PASSANT

by James Martin
and Mike Peters

WHY IS THE CENTER IMPORTANT

Why is the Center Important?

The center is important because (other things being equal):

1) A piece placed in the center (especially K4, K5, Q4 or Q5) is posted where it can exert its maximum efficiency. You can test this easily and convincingly by counting the number of squares commanded by a Queen, a Bishop or a Knight when placed at K5, KB5 or KR1.

From this important feature of the center, we deduce the principle that: 2) Pieces placed in the center can easily be transferred from one part of the center to another; also that pieces placed in the center can readily be switched to either wing.

To get some practical value from these principle principles, we may observe that a player who has a strong grip on the center has excellent chances of success if he undertakes an attack against an opponent who has an infirm hold (or none

at all) on the center. Conversely, a player who has only slight command of the center is inviting disaster if he attacks a player who controls the center.

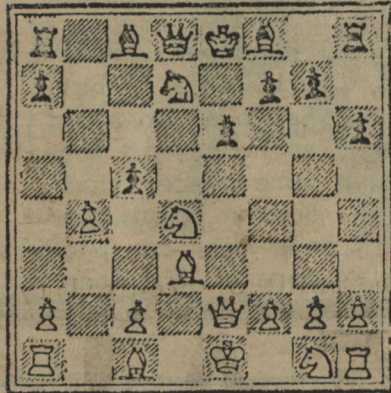
Problems

#1. White to mate in 3

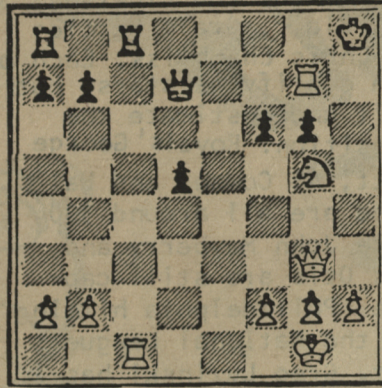
#2. White to mate in 9

#3. White to mate in 3
(There are two ways to do it in three)
or
White to mate in 4

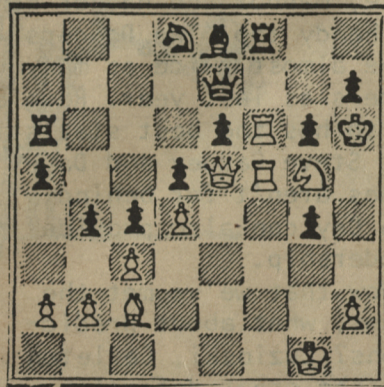
#1.



#2.



#3.



4.R-R8 Mate
3.RxNfch K-B1
2.R-R5ch K-N2
1.N-B7ch RxN
or
3.R-B1 Mate
2.RxNf KxR
1.N-B7ch K-N2
or
3.RxNf Mate
2.R-R5ch K-N2
1.N-B7ch QxN

#3

9.Q-Q6 Mate
8.N-B7ch K-Q2
7.Q-Q8ch Q-K1
6.Q-B7ch K-Q1
5.Q-N8ch K-K2
4.Q-N7ch K-K1
3.Q-R8ch K-K2
2.Q-R7ch K-B1
1.Q-R4ch KxR

#2

3.B-N6 Mate
2.QxKf PxQ
1.N-B6 Q-B2

#1

SOLUTIONS



OPEN 7 DAYS A WEEK

4:00 p.m. - 1:00 a.m. SUNDAY

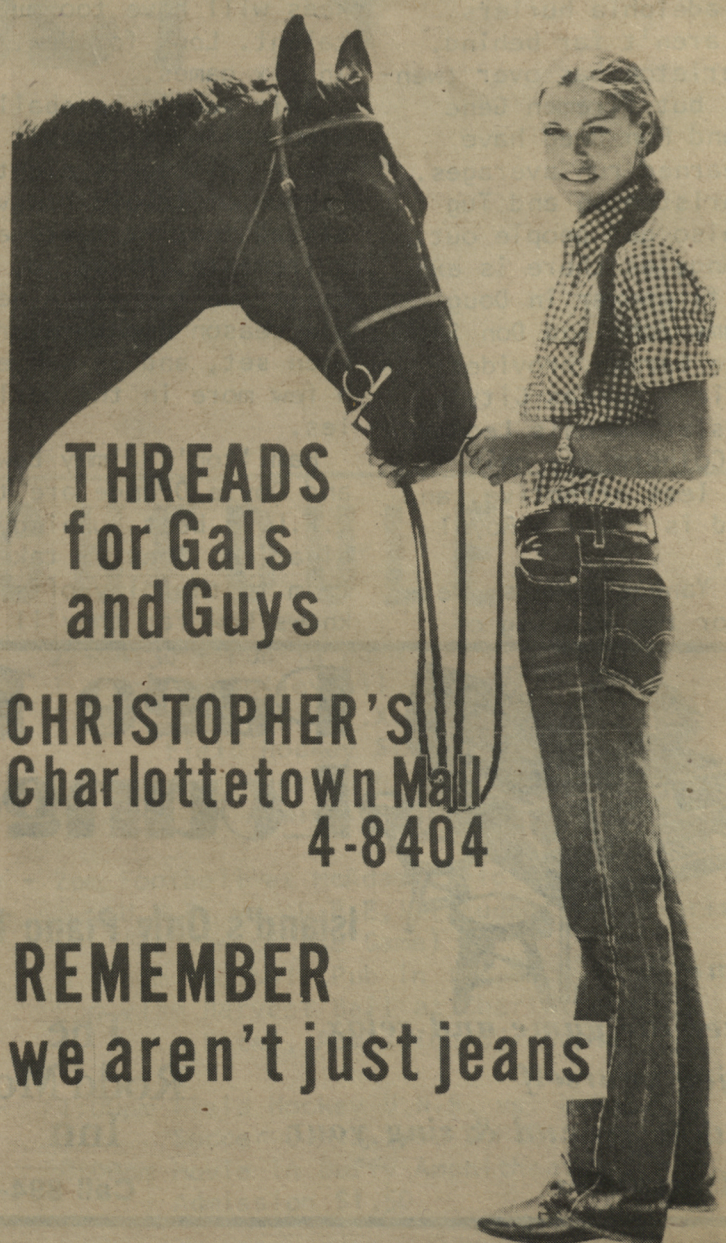
Charlottetown - 115 Kent St.

Ch'town Mall

Ch'town Airport

Montague - Main St.

Summerside - 10 Summer St.



**THREADS
for Gals
and Guys**

**CHRISTOPHER'S
Charlottetown Mall
4-8404**

**REMEMBER
we aren't just jeans**