

DAILY MARKET QUOTATIONS

SUMMARY

By THE CANADIAN PRESS
Toronto — Market sharply lower; moderate trading.
New York—Market lower; industrial off sharply.
Montreal — Market lower, moderate trading.

gained 1/2 to 6, Dominion Tar lost 1/2 to 2 1/2, Dominion Limes added 1/2 to 7 1/2 and Hudson's Bay Company was unchanged at 13.
In mines, Mercury fell six cents to 50 cents, Hollinger Gold rose 1 1/2 to 25 and Glen Lake Silver added two cents to \$1.73.
On index, banks were off 0.25 at 69.80, utilities off 0.5 at 136.0, industrials off 1.7 at 274.3, papers off 5.2 at 508.8 and golds up 2.76 at 81.86.

CURRENCIES

MONTREAL (CP)—The U.S. dollar closed at a premium of five per cent in terms of Canadian funds, unchanged from Tuesday's close. Pound sterling closed at \$2.95 7/16, unchanged.

MONTREAL CLOSING STOCKS
By The Canadian Press
Complete tabulation of Wednesday transactions. (Quotations in cents unless marked s., x—Ex-rights, xw—Ex-warrants. Net change is from previous board-list closing sale.)

LIVESTOCK

MONTREAL (CP) — Livestock prices were steady Wednesday. Trading was light and demand good.

Receipts at 2:30 p.m. were: 66 cattle, 82 calves, 178 hogs and six sheep and lambs. Tuesday receipts were: 431 cattle, 1,049 calves, 481 hogs and four sheep and lambs.
Common steers sold 17.25-20.50.
Good cows were 17-19, medium 16-17, common 14.75-16 and canners and cutters 6-14.50.
Common and medium bulls were 15-19.50.
Good vealers were 25-29, medium 22-27, common 19-20 and grassers 15-17.

Grade A hogs were 27.75 and sows 20-21 on the west-end market. Grade A hogs were 27 with most 27 plus 80 cents each on the east-end market, with sows 19-20 and some 19 plus 80 cents each.

DIVIDENDS

By THE CANADIAN PRESS
Rally Selburn Oil and Gas Ltd., five per cent pfd, first series, 3 1/4 cents, 5 1/4 per cent pfd, second series, 36 cents, June 1, record May 15.
Canada Mailing Co. Ltd., 50 cents, June 15, record May 15.
Continental Can Co. Inc., common 45 cents, June 15, record May 22.
Guaranty Trust Co. of Canada 8 1/4 cents, July 15, record June 20.
Pembina Pipe Line Ltd., five percent pfd, 6 1/4 cents, June 1, record May 15.

NEW YORK

NEW YORK (AP)—Concern over possible future government intervention in wage-price relations and disappointment over U.S. steel profits went hand in hand Wednesday with an unusually sharp stock market decline. Trading was moderate.

An estimated \$4,300,000,000 in quoted value of stocks listed on the New York Stock Exchange was erased, based on the decline in The Associated Press average.

The AP 60-stock average fell 2.90 to 252.00.
U.S. Steel was the most active stock, down 2 1/4 at 59 1/4 on 130,200 shares.

Ford was off 1/4 at 87 1/4, and Sperry Rand off 1/4 at 19 1/4. Bethlehem, off 1/4, reports today on quarterly finances and operations.

Aluminum Ltd. was the most heavily sold of its group, losing 1 1/4 as eighth most active stock. Alcoa dropped 2, Reynolds Metals 1 1/4 and Kaiser Aluminum 1 1/4.

Another Canadian issue which fell sharply was International Nickel, down 1 1/4. Canadian Pacific was off 1/4. Down 1/2 were McIntyre Porcupine, Walker-Gooderham and Distillers Seagrams.

Prices fell on the American Stock Exchange. Preston Mines dropped 1/4, and Shawinigan was down 1/4. Brazilian Tracton was off 1/4.

What stocks did: Wed Tues
Advances 240 498
Declines 827 552
Unchanged 220 254
Total issues 1287 1306

NEW YORK CLOSING STOCKS
By The Associated Press
Beth Steel 39 1/2 Kennecott 78
Borg Warner 4 1/4 Monty W 34
C and O 8 1/4 NY Corp 16 1/4
Cons Edison 80 Radio Corp 58 1/2
EJ Auto 8 1/4 South Pac 25 1/4
Gen Elec 7 1/4 SBC Oil 27 1/4
Goodyear 4 1/4 Unk Aircraft 45 1/4
Gt Nor Ry 4 1/4 Vassalium 39 1/4
Int T T 4 1/4 Westing 34

MONTREAL

MONTREAL (CP) — Stocks were sharply lower on the Montreal and Canadian exchange Wednesday. At the close 163 issues almost tripled gains 132 to 48. Trading was active among industrials, but light in mines.

Aluminum fell a point to 25 1/4, a new low, in heavy trading. Quebec Natural Gas fell 1/2 to 6 1/4 and International Nickel lost 1/2 to 8 1/4.
Abilbit fell 1 1/2 to 47 among papers. Moore at 58 1/4 and Consolidated Paper at 41 each lost 1/4. Price gained 1/2 to 50 1/4 in heavy trading.
Shawinigan fell 1/4 to 22, a new low, among utilities and Avallon Telephone fell 1/4 to 15 1/4.

Canadian Petrofina preferred at 13 1/4 and B.A. Oil at 34 each fell 1/4. Pacific Petroleum fell 1/4 to 15 among western oils and Home A. rose 1/4 to 15 on news of higher first quarter earnings.
Alta Steel at 20 1/4 and Stelco at 24 1/4 each dropped 1/4 among steels. Bank of Montreal fell 1/4 to 58 and Bank of Nova Scotia lost 1/4 to 75 1/4.
Trans-Canada Fund backed the trend, rising 1/4 to 11 1/4 in heavy trading. Canadian Aviation Electronics fell 1/4 to 22 1/4. CPR lost 1/4 to 26, A. V. Rose

C Pkbs A	252 3/4	252 3/4	252 3/4	252 3/4	252 3/4
C Pkbs B	252 3/4	252 3/4	252 3/4	252 3/4	252 3/4
C Imp Rk	252 3/4	252 3/4	252 3/4	252 3/4	252 3/4
CL	820 1/2	820 1/2	820 1/2	820 1/2	820 1/2
CI Pow	770 1/2	770 1/2	770 1/2	770 1/2	770 1/2
CI Pow p	35 1/2	35 1/2	35 1/2	35 1/2	35 1/2
C Marconi	800 1/2	800 1/2	800 1/2	800 1/2	800 1/2
Cin Oil	375 1/2	375 1/2	375 1/2	375 1/2	375 1/2
CPR	291 1/2	291 1/2	291 1/2	291 1/2	291 1/2
Cdn Pat	228 1/2	228 1/2	228 1/2	228 1/2	228 1/2
C Victors	100 1/2	100 1/2	100 1/2	100 1/2	100 1/2
CKP Dev	100 1/2	100 1/2	100 1/2	100 1/2	100 1/2
Col Cell	150 1/2	150 1/2	150 1/2	150 1/2	150 1/2
Com Mkt	1300 1/2	1300 1/2	1300 1/2	1300 1/2	1300 1/2
Com Text	180 1/2	180 1/2	180 1/2	180 1/2	180 1/2
Cr Zinc A	135 1/2	135 1/2	135 1/2	135 1/2	135 1/2
C Glass x	300 1/2	300 1/2	300 1/2	300 1/2	300 1/2
Cr Zinc B	135 1/2	135 1/2	135 1/2	135 1/2	135 1/2
Dist Seag	790 1/2	790 1/2	790 1/2	790 1/2	790 1/2
Dom Lime	1100 1/2	1100 1/2	1100 1/2	1100 1/2	1100 1/2
D Bridge	1285 1/2	1285 1/2	1285 1/2	1285 1/2	1285 1/2
D Fedry	50 1/2	50 1/2	50 1/2	50 1/2	50 1/2
D Steel	150 1/2	150 1/2	150 1/2	150 1/2	150 1/2
D Store	1075 1/2	1075 1/2	1075 1/2	1075 1/2	1075 1/2
Dom Tar	200 1/2	200 1/2	200 1/2	200 1/2	200 1/2
Dom Text	1315 1/2	1315 1/2	1315 1/2	1315 1/2	1315 1/2
D Text p	15 1/2	15 1/2	15 1/2	15 1/2	15 1/2
Donohue	100 1/2	100 1/2	100 1/2	100 1/2	100 1/2
Du Rwe	100 1/2	100 1/2	100 1/2	100 1/2	100 1/2
Du Post	600 1/2	600 1/2	600 1/2	600 1/2	600 1/2
Dupuis A	300 1/2	300 1/2	300 1/2	300 1/2	300 1/2
Enam A	100 1/2	100 1/2	100 1/2	100 1/2	100 1/2
Fleetwood	200 1/2	200 1/2	200 1/2	200 1/2	200 1/2
Fr Pete	200 1/2	200 1/2	200 1/2	200 1/2	200 1/2
Frost A	500 1/2	500 1/2	500 1/2	500 1/2	500 1/2
Gal 5 1/2	25 1/2	25 1/2	25 1/2	25 1/2	25 1/2
GS Ware	800 1/2	800 1/2	800 1/2	800 1/2	800 1/2
Gt Wg vt	750 1/2	750 1/2	750 1/2	750 1/2	750 1/2
GL Paper	220 1/2	220 1/2	220 1/2	220 1/2	220 1/2

Royal Bank	1400 1/2	1400 1/2	1400 1/2	1400 1/2	1400 1/2
Salada F	800 1/2	800 1/2	800 1/2	800 1/2	800 1/2
Shawin	1750 1/2	1750 1/2	1750 1/2	1750 1/2	1750 1/2
Shaw 4 1/2	75 1/2	75 1/2	75 1/2	75 1/2	75 1/2
Sicard	100 1/2	100 1/2	100 1/2	100 1/2	100 1/2
Simpson	375 1/2	375 1/2	375 1/2	375 1/2	375 1/2
Southern	100 1/2	100 1/2	100 1/2	100 1/2	100 1/2
Steel Can	1421 1/2	1421 1/2	1421 1/2	1421 1/2	1421 1/2
Steno C	250 1/2	250 1/2	250 1/2	250 1/2	250 1/2
Teno C	15 1/2	15 1/2	15 1/2	15 1/2	15 1/2
T Fin B	50 1/2	50 1/2	50 1/2	50 1/2	50 1/2
T Corp	400 1/2	400 1/2	400 1/2	400 1/2	400 1/2
T Corp PL	2000 1/2	2000 1/2	2000 1/2	2000 1/2	2000 1/2
Un Steel	210 1/2	210 1/2	210 1/2	210 1/2	210 1/2
Vendomat	250 1/2	250 1/2	250 1/2	250 1/2	250 1/2
Viau	800 1/2	800 1/2	800 1/2	800 1/2	800 1/2
Walk GW	400 1/2	400 1/2	400 1/2	400 1/2	400 1/2
Wash Knp	800 1/2	800 1/2	800 1/2	800 1/2	800 1/2
Weston A	275 1/2	275 1/2	275 1/2	275 1/2	275 1/2
Western	250 1/2	250 1/2	250 1/2	250 1/2	250 1/2
Zellers	1100 1/2	1100 1/2	1100 1/2	1100 1/2	1100 1/2

The Guardian, Charlottetown, Thurs. April 26, 1962. 13

Miracle Cushion Holds False Teeth Tight — Eases Sore Gums

Snugg brand Denture Cushions, a new national new plastic re-lining, keep web dentures firmly in place. Ease sore gums, give perfect comfort. Eat, laugh, talk — please "stay put". Applied in minutes — last from 2 to 6 months. Stay soft, any pliable. Harmless to dentures. Place right out where replacement is needed. No daily bother with adhesives. 2 liners for upper or lower plates \$1.50. Money-back guarantee. Get Snugg brand Denture Cushions today! At all drug stores.



The Management and Staff
of
Crockett & Storey Limited
extend a most cordial invitation to attend
The 1962 Style Show
of exclusive
Living Room Furniture Fashions
(direct from the 1962 Furniture Show)
at their store
on the Second Floor
Thursday, Friday, Saturday
April 26, 27 & 28
open Thurs. & Fri. till 9:30 p.m.
Saturday till 5:00 p.m.

THURSDAY and FRIDAY this week 9 a.m. to 9.30 p.m.
SATURDAY 9 a.m. to 5 p.m.

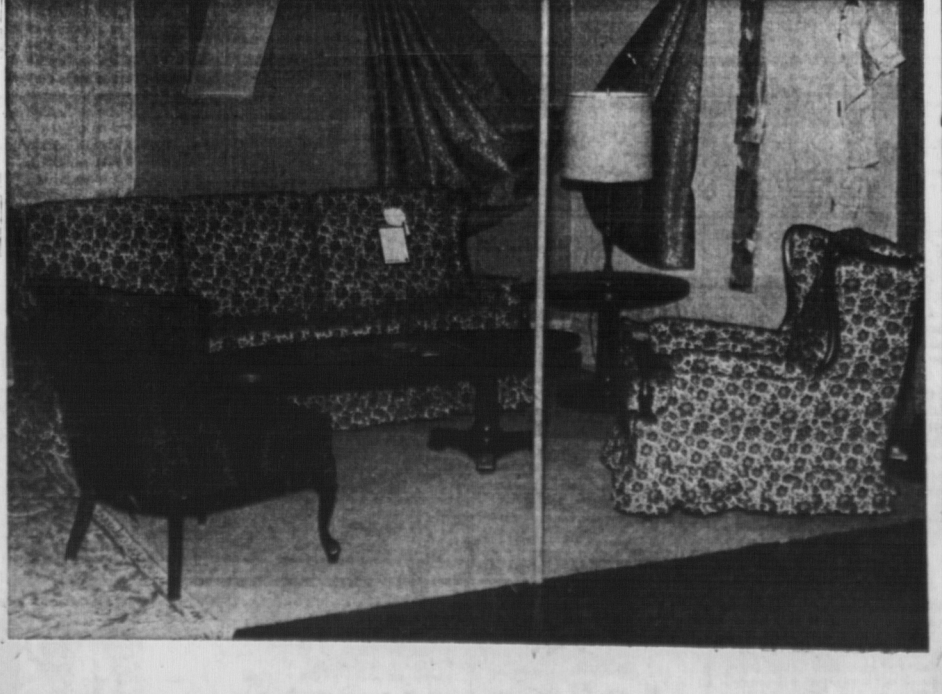
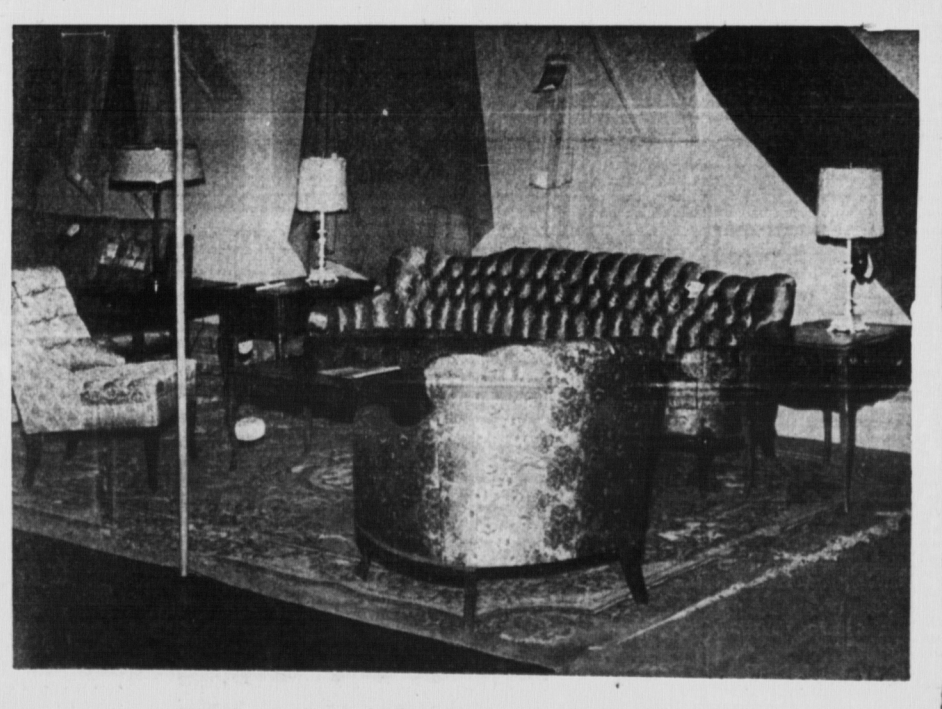
Here! in Charlottetown!

Direct from the Furniture Show in Toronto—the finest sofas, chairs, tables, lamps, drapes and carpeting—for your home—and brought to you by Crockett and Storey Ltd.

See the beautiful designs . . . look at the glamorous new covers which for the first time can be GUARANTEED by the manufacturer for THREE YEARS against WEAR and FADING . . . See some of the world's finest genuine INDIA carpets—multi-colored to harmonize in any room setting . . . See the latest drapery materials which will be custom made for your windows and delivered to you within three weeks.

See it TODAY and FRIDAY from 9 a.m. to 9:30 p.m. open both nights and SATURDAY until 5 o'clock.

ALL SHOW PIECES AT REDUCED INTRODUCTORY SPECIAL PRICES



CROCKETT & STOREY LTD.

134 Kent Street

CHARLOTTETOWN

Dial 4-5559