

Family garden living grows to new heights

The popularity of "family to the Canadian Association of garden living" has spurred to new heights as more and more modern women partake a lively garden living and enter of modern living are chased away by wholesome outdoor life on the property, according to friends and family enjoy it more, it is reported.

MODERNIZE YOUR HOME FOR SPRING
with our new stock of building materials

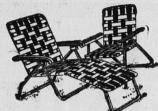
LOOK FOR THESE INTANGIBLE SERVICES WHEN YOU SHOP AT CHANDLER BROS. LTD.

Product knowledge convenient location free and ample parking no cutting and waiting design, style and colour advice complete stocks nationally advertised brands informative literature visual display courteous, efficient sales people modern show room and trained employees.

CHANDLER BROS. LTD.
1 Plywood Place Dial 4-6557

Archer & MacDonald Ltd.

For Outdoor Living



LAWN CHAIRS

Fold-away group includes chaise and two arm-chairs. Frames are 1" tubular aluminum. Made for long-lasting comfort of sturdy weaving.

CHAIRS
Priced From . . . **5.95**

Archer & MacDonald Ltd.

Open Every Night 'til 9 p.m.
St. Peters Road Parkdale Hunter River Phone 15

New shades add style

Think window shades are old fashioned? Maybe they used to be, but now they are coming back as an integral part of the highest styled interiors. Aided with new concepts turning up for shade cloths, it is now as simple as it is fashionable for window shades to take this bright new place in room decor.

One of the most recent shade developments is a white-on-white, screen-printed cloth that is delicate and lasting, yet fully washable and long wearing. Made of polyester fiber and cotton, it is one of the new types of washable window shade cloths available widely through shade dealers, decorators, and department stores.

Ranging in pattern from traditional designs to moderns and abstracts, this finely woven fabric cloth reveals a full silhouette of the pattern when light shines through it, as from the outside in daylight hours. But when light strikes just the surface of the cloth, as indoors at night, only a subtle white-on-white trace of the design remains and the shades blend softly with other furnishings of the room.

These neutral-toned, white-on-whites tend more to complete than to set a room's design theme. One of the patterns, a lacy print, makes an ideal complement for early American furnishings. Abstract patterns give more modern decor an appropriate setting. And a stylized coin design could fit right into a paneled den.

SIDMOUNT GARDENS SAY . . . start your garden now

- SHRUBS ADD BEAUTY . . .**
- Roses
 - Junipers
 - Cedars
 - Flowering Crab
 - Weigelia
 - Hydrangeas
 - Forsythias
 - Mock Orange
 - Choice Lilacs
 - Honey Suckle
 - Clematis
 - Barberry
 - Privet Hedge, etc.
 - Prunus
 - Taxus
 - Holly
 - Snow Ball

5,000 **GLADIOLI BULBS** 75¢ doz.
Outdoor **MUMS** 10 colors **3 for \$1**

- SPECIAL**
- Dahlias
 - Cannas
 - Pansies
 - Gladiolus
 - Geraniums
 - Tuberous Begonias
 - Gloxinias
 - Ivy
 - Coleus
 - Potted Plants

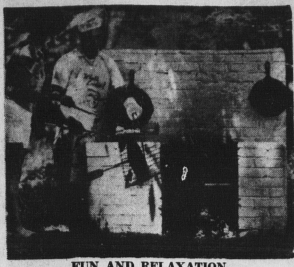
- ROSES**
- HYBRID
 - TEA
 - POLYANTHA
 - CLIMBERS

MAKE YOUR HOME IMPROVEMENTS

This Spring. For Complete Building Material

- SASHES AND DOORS
- HARDWARE SUPPLIES

CONTACT **BAGNALL'S MILLS Ltd.**
Hunter River Phone 15



FUN AND RELAXATION

Backyard picnics are change of pace

Since traffic on a summer day is usually bumper to bumper, picnics in your own backyard provide a pleasant change of pace. There's really no reason to knock yourself out when weenies and hamburgers taste and smell just as good in your own backyard. It is essential, however, to have the right fire, built according to pattern offered below, helps insure having a successful picnic.

The fun and relaxation starts when you start building. You'll get a psychological lift when you realize what an expert bricklayer you become when you place each brick in exact position shown in the step-by-step illustrations. Before buying any materials make sure there are no local codes prohibiting the building of a fireplace. Then position the fireplace where pattern recommends. This should prevent sparks and smoke from annoying the cook and the neighbors.

Directions so simply building, everyone becomes completely fascinated and amazed to see how adept they become with a little practice. Bricklaying is beneficial in two ways. It only provides an economical way of building a fireplace but also offers a sure cure for nervous tension. Taut nerves begin to relax as your mind and body adjust to the steady rhythm of bending over.

are endorsed by the Insulation. PANELS POPULAR Perforated hardboard panels already are popular for hanging tools, displaying kitchen utensils, supporting shelves and the like. These same panels, available in standard 4 by 8 feet size, or smaller sheets, can be used for acoustical purposes.

For sound control purposes the hardboard is usually backed by a 2-inch layer of rock wool, wood fiber or fiber glass insulation. It can be put up directly over studs which are properly aligned, or over furring strips on existing walls, of course, it can be used for ceilings as well.

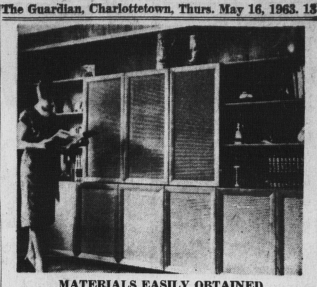
RESISTS DENTS The great advantage of hardboard over other insulation materials is the fact that its hard surface resists dents and is easily cleaned. Thus it is indicated for hard use areas in the home. Hardboard is a product of wood chemistry and may be worked, cut or drilled like wood. It does not chip or splinter and has no grain to rise and mar the appearance.

In some rooms the natural light or darker brown tones of hardboard can be unfinish in kitchens, or any other room where a color scheme is important, hardboard can be painted. Flat paints, semi-gloss or gloss enamels can be used over a primer. Rollers are generally used on perforated panels, since they are less likely to clog the holes.

Painting tips ease work

Painting job coming up? For an easier decorating project, here are 10 suggestions from the Canadian Paint Varnish and Lacquer Association.

1. Use quality paint to hide old surface better and make the need for two coats less likely. Quality paint will hold its color and last longer.
2. Remove hardware from doors and cabinets and loosen wall or ceiling electric fixtures. This allows you to paint faster without worry of marking the metal.
3. Instead of trying to match the color of wall paints exactly with drapery or upholstery fabrics, select variations of colors that will harmonize with them. An exact color match is virtually impossible.
4. If the color of your walls is light, paint the ceiling the same color. Then you will not have the problem of keeping ceiling paint off walls and vice-versa.
5. Use the largest roller or brush that you can comfortably manipulate to speed up your work.
6. Use a smaller roller to paint your baseboards. Protect your wall and floor with cardboard or a metal shield available at most paint stores.
7. Enamel woodwork with a semi-gloss or gloss enamel before applying flat paint. Latex or alkylid to the walls. Enamel to remove paint from enamel than enamel from paint.
8. If paint gets on window panes, do not worry. When the paint has dried, scrape it off with a safety razor blade.
9. When painting ceilings, if you place a 1/2 inch plank at the proper height on the track of two solidly footed step ladders it will eliminate much climbing.
10. An easier method, if you prefer it, is to use a long-handled roller. This will permit you to paint most of the ceiling while standing on the floor.



MATERIALS EASILY OBTAINED

Outdoor storage requires planning

Everyone who has a storage problem will find an economical answer in the book offered below. It tells how to build wall to wall cabinets from floor to ceiling, in any apter available. It also explains how to install a recessed turntable amplifier, tuner and speakers if you want to build a truly handsome high fidelity music wall. One of six new cabinets and bookshelves can be built by following the step by step directions and assembly illustrations.

A lowly standing 32" or 42" high can be built 60" or any additional width desired. Illustrations simplify building an engineered speaker cabinet with decorator styled doors. All materials specified in the book are stock items readily obtainable at lumber yards everywhere. While the doors on this designer styled cabinet are comparable in quality to the finest available, anyone who can read and follow simple illustrations can not only build the cabinets, but also install recommended equipment with professional results assured.

Send \$1.00 in coin, check or money order to Toronto 514 r Syndicate, 80 King St. W., Toronto 1, Ont. for Home Improvement Book No. 612 How to Build Wall to Wall Cabinets, Bookshelves. Install Hi-Fi.

Memo board handy item

HOME EDIT. V M MEMO V M Every kitchen can use a blackboard on which the homemaker can write memos and messages to the family. Making one is easy and inexpensive. Ask your lumber yard for a piece of tempered hardboard of the pressed wood type. A common size for the kitchen is 3 feet wide and 18 inches high in the upper corners, drill holes through which screws will fasten the board to the wall. Round the corners and the exposed edges with a file or sandblock.

FOR RENT Construction Equipment

Dozers, Loaders, etc. TOP SOIL And Clay Fill For Sale. We will deliver to your lot. Camac Construction Co. Ltd. Belvedere Corner Phone 4-7010

IT PAYS TO IMPROVE YOUR PLUMBING

ONE-STOP PLUMBING CENTER We guarantee all our work and merchandise to assure you of greater comfort, convenience and value. Whatever your plumbing needs — just call us!

BEVAN BROS. LTD.

FOR YOUR PLUMBING and HEATING AND SHEET METAL BEVAN BROS. LTD. 60 Queen St. Phone 4-1688

You Have the money --

we have the time and men . . .

We plant new lawns, and repair old ones . . . we'll plant your shrubs and flowers, and we'll even look after them all through the season if you wish. Why not call us today?

G. DeJong Landscaping Artist

Dial 4-7534 York, P.E.I.

Don't Wait... INSURE

... act now for a cool summer! ATLANTIC ROOFING and INSULATION LTD.

For best results use blower methods, also approved applicators for—

- ROCK-SHAKE SIDE WALL
- PERMATONE SIDING
- ROOFING, etc.

FREE ESTIMATE WRITE OR PHONE COLLECT 894-6271 18 Spring Park Rd., Charlottetown B-756 ALL WORK GUARANTEED Mr. Morais Manager