



DISPLAY INSTRUMENTS

Four members of the O'Leary Region Lions Band proudly display their new band instruments following a presentation ceremony in O'Leary Regional High School auditorium re-

cently. Shown here are: (FROM THE LEFT) Brian Dewar, trumpet; Paula Kennedy, flute; Charles Adams, trombone; and Susan Rogers, saxophone; and King Lion Keir

Ramsay, O'Leary Lions Club, sponsors of the band project. The presentation of instruments to the thirty-five boys and girls was made by the P.E.I. director of music Christopher Gledhill, M.A. B Mus.

City Resident Assessed \$20

A fine of \$20 and costs of 10 days was imposed upon Gordon Albert Huestis, city, when he appeared before Magistrate A. James Haslam, Q.C. on a charge of speeding. The accused was arraigned in city police court yesterday.

John Martin Beck, Montague, also charged with speeding was fined \$15 and costs of five days. Marvin MacNeill, Milton, and Norman Lloyd MacKay, Harrington, were both arraigned on charges of driving motor vehicles without due care and attention. MacNeill had his case adjourned to April 15, while MacKay had his case adjourned to March 18.

A city man, Everett Compton, charged with drunken driving was remanded to Thursday, March 17.

Edward K. Tierney, city, charged with false pretences, had his case withdrawn. Lea Elmer Wilson, Craupad, charged with assaulting a police officer, was discharged due to insufficient evidence.

TAX BAN BENEFITS BABES OTTAWA (CP) — The tariff board has ruled that a newly-developed cradle warmer for use in hospital nurseries can be imported into Canada duty-free. Duty of 15 to 30 per cent of the value of electrical apparatus is imposed unless otherwise provided for. But a wide range of hospital equipment including infant incubators is admitted free of duty.

Island News Page

2 The Guardian, Charlottetown, Wed. March 16, 1966.

Davie Fulton To The Island

Former justice minister in the Diefenbaker Cabinet, Davie Fulton, will be guest speaker at the annual meeting of the Prince Edward Island Young Progressive Association to be held here April 1 and 2.

Arthur MacInnis, Charlottetown, president of the YPC's expressed great pleasure and gratification that Mr. Fulton will attend the annual meeting.

Mr. Fulton will also meet with the student Progressive Conservative clubs at St. Dunstan's University and Prince of Wales College.

The annual meeting of the P.E.I. YPC's will be held at the Basilica Recreation Centre beginning Friday evening with a panel discussion.

Saturday morning there will be workshops and discussion groups and in the afternoon the resolutions committee will present its findings.

The election of officers will windowless houses and the use anti-pick salves; speed can also be used with reasonably good results. If picking persists the birds can be debarked with an electric debarking machine.

When the chicks are six to eight weeks old, change gradually from chick starter to growing mash, taking several days to make the change.

Your feed service man can advise you on which one of the growing programs you should follow on your particular farm and suitable to the strain of birds you are raising.

Strive to keep your birds comfortable, be fussy and watch every detail, it's the little things that count.

Prior to coming to Canada 13 years ago Mr. Augustin worked for a number of years in his grandmother's delicatessen in Austria.

takes place on Saturday afternoon and a new provincial president will be elected at this time.

Invitations have been extended to the four Island members of the House of Commons, the Premier and the Conservative M.L.A.'s in the Legislative Assembly and to the provincial YPC presidents in the other Atlantic Provinces.

Working closely with the Provincial executive in making arrangements for the meeting are the three county executives led by Lloyd Lawless, president of the Prince County YPC's, Dave Hyndman, Queen's County president and Charles Campbell, Kings County president.

Delicatessen Set To Open

The Heidelberg Coffee Shop and Delicatessen will open at 192 Kent Street on Thursday, March 17. The proprietor and cook John Augustin has had several years cooking experience both in Canada and in his native Austria.

Besides Mr. Augustin the shop will have a staff of three and be open from 7 a.m. to 9 p.m. on week-days and from 11 a.m. to 9 p.m. on Sunday. It measures 18 feet by 35 feet and will have three tables and seven stools.

The shop will specialize in European dishes. Mr. Augustin already has seven varieties of salami on order and will serve such items as European cheese and goulash. The "very Canadian" hot sandwiches and a number of light snacks will also be on the menu. Mr. Augustin plans on featuring a daily special.

Prior to coming to Canada 13 years ago Mr. Augustin worked for a number of years in his grandmother's delicatessen in Austria.

SHERWOOD MOTEL DININGROOM

will be closed to the public until Easter Sunday

All units will remain open and meals will be served to guests only.

"Meals will be served to parties on advanced Reservations"

TONIGHT and THURSDAY THE BENEVOLENT IRISH SOCIETY

Proudly Presents

"NORAH'S FOLLY"

A three-act comedy

Birchwood High School Auditorium

Curtain 8:15—Admission \$1.00

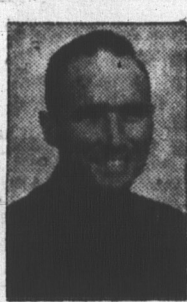
Tickets on sale at Hughes Drug, Medical Pharmacy, Archer and MacDonald and Stead's Pharmacy and at Birchwood High School.

Excellent Specialties.

Doors open at 7 o'clock

Under the distinguished patronage of His Honor Lt. Governor and Mrs. MacDonald, Premier Shaw and Mrs. Shaw and Mayor Cox and Mrs. Cox.

FACTS FOR FARMERS



Ability To Raise Chicks Test Of Good Poultryman

By GERALD JOHNSTONE
Poultry Fieldman
P.E.I. Dept. of Agriculture

The best test of a good poultryman is his ability to grow good chicks year after year. However, with the improvements in breeding, feeding and brooding equipment, the task should be easier than ever before.

The aim of the grower is to start chicks with a clean bill of health; to keep them healthy and to bring them to maturity with the best feed conversion possible.

Prince Edward Island hatched chicks have an excellent rating from the standpoint of health. Fulgurum disease, which at one time was a serious problem, has in our Province today been practically eliminated by careful blood testing of our breeding stock. It remains for the prospective chick customer to decide just what type or breed of chicken is best suited to his environment, markets, etc.

By contacting your local island hatchery manager you can discuss with him the various strains and breeds which he has available, and he can help you make a choice most suitable to your particular needs. These people are experts and are only too happy to help and assist you with your problem at any time.

Brooding is the term applied to the management of the flock during the period that the chicks must be supplied with heat. The length of this period varies with the time of year and the purpose for which the chicks are being brooded. Successful brooding is a question of management and worthwhile results depend largely on the "Man" in management.

The raising of chicks, in fact, any part of poultry husbandry, is a very detailed business and the caretaker who gives particular attention to all the little details can add much to the success of the enterprise. In the poultry business, as in any other endeavor, "trifles make perfection and perfection is no trifle".

TYPES OF BROODERS
The type of brooder used revolves around several considerations. The number of chicks to be brooded; how many broods per year; the time of year and so on.

The most popular types in Prince Edward Island today are propane, kero-gas, hot water systems, and electric brooders of several kinds.

HOUSING
Moveable or colony houses make satisfactory housing for the small farm flocks. Regardless of size of brooding operation, do not crowd—"it is very poor economics to over-populate a brooder or brooding house." Remember growing chicks more than double their weight every two weeks, so a brooder filled to capacity at the start can be over-crowded in a very short time. For the large flock, a permanent brooder-house is more economical, in most cases it can be used the year round for brooding and rearing as well as for housing layers if the need arises. Less labour is required and automatic equipment can be used more efficiently in a permanent brooder house.

BEFORE THE CHICKS ARRIVE
If the brooder house has been previously used for poultry, it should be thoroughly cleaned before putting chicks in. Foreign material should be removed by scraping and sweeping. A good soaking with a lye solution (one 4 oz. can of lye to 5 gallons

of water) followed by a final spraying with a reliable disinfectant. If miles are a problem a coal-tar base disinfectant will be quite effective.

Possibly the best and cheapest litter is shavings, cut straw or clean shore sand spread evenly over the floor and completely warmed before the chicks are placed on it.

During the first few days, there is danger of chicks wandering from the source of heat, thus a corrugated paper fence should be placed around the brooder and about two feet from the edge of the hoover, gradually enlarge and remove completely as the chicks grow.

Use paper egg trays, or box covers as feeders for the first few days, also have sufficient waterers available and use a good commercial chick starter.

FEEDING AND WATERING
It is sometimes good economy to waste a little feed when your chicks are being started, that is, scatter the papers or egg flats, endeavour to get as much feed into the chicks as possible. After a day or so, introduce regular feeders and reduce feed wastage by not filling more than half full.

Feed is approximately 60 per cent of the total cost of raising chickens and every effort should be made to cut wastes to a minimum. Ample feeding space is also a "must", as this will reduce the number of cull birds.

Recommended feeding space—up to two weeks of age—one inch per bird. Two to eight weeks—two inches per bird and eight to 12 weeks—three to four inches per bird.

Water is one of the cheapest and yet the most needed commodity for growing birds. Allow two one-gallon founts per 100 chicks until three weeks of age—then double until 12 weeks or provide two feet of continuous or automatic water trough space per 100 birds, increase water and feeding space as birds continue to grow and develop.

GRIT
Sprinkle fine, hard, insoluble grit on top of the feed three times per week. Change to growing size grit at approximately six to eight weeks of age. Floor space is also important and 8 square feet per chick up to eight weeks and increasing to 25 or 35 square feet as the birds develop, depending on the breed used, more floor space than the light efficient Leghorn type birds.

Overcrowding places stress on the flock and very frequently is the major cause of disease and sanitation problems as well as cull birds developing during the brooding and growing periods.

MANAGEMENT
The first few days in the life of a chick as conditions then or habits formed, could have a serious effect on the future development of the young bird.

do your shopping at
North River Store
for everyday
Steady Low Prices!

WE MAKE TO ORDER . . .
Party Sandwiches—Ham, Chicken Salad, Egg Salad, etc. Bulk orders of Cole Slaw, Potato Salad, Scallops, Macaroni & Cheese, Rolls, Sweets, and Assorted Pastries. Take the work out of your party—let us help you.
ENTERPRISE BAKERY
205 Grafton St. Dial 4-8747

SPRING
Check up Time
● Ignition
● Carburetor
● Wiring
ROBINSON'S IRVING
Richmond St. Ch'town

MOTOR REWINDING & REPAIRS
Storey Electric Ltd.
136 Prince St., Ch'town

We continually endeavour to merit your confidence

● Prescriptions
● Prompt Service
● Free Delivery
THE JENKINS PHARMACY
Dispensing **Rexall** DRUGS Chemists
Cor. G. George & Kents Sts.
Open Evenings Dial 4-4219

SIMPSON'S SEARS End-of-Winter HITS

Great 9-Day Sale of Refrigerators!



● 14.3 Cu. Ft. Coldspot Auto. Defrost
Nothing to Pay Until May
289.95

Family-size refrigerator with zero-zone freezer section (with separate door) that holds 127 lbs. Both doors have shelves including dairy dish. Two deluxe porcelain crispers. Egg bucket holds 3 dozen eggs. White porcelain interior.

● 12 Cu. Ft. Coldspot Manual Defrost
One-door model with a freezer chest that holds 52 lbs. Two deluxe porcelain crispers for fruit and vegetables. Magnetic door gasket seals cold in, keeps heat out.
209.95

● 9.4 Cu. Ft. Coldspot Man. Defrost
Real low price for an economy model 36-lb. freezer chest plus 12-lb. chiller tray. Plastic vegetable crisper. Magnetic door gasket. White Acrylic enamel exterior.
189.95

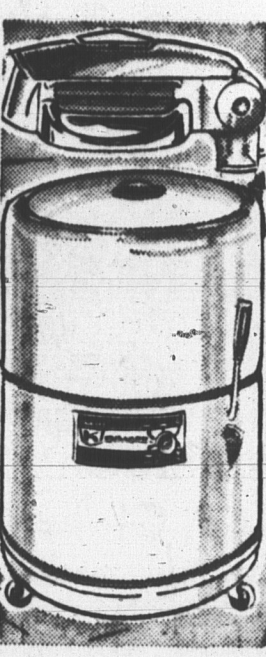
There's a Coldspot Home Freezer to Suit Your Needs

26 cu. ft. model that holds 90 lbs. of frozen foods! Thin-wall construction to take up less space. Lifetime porcelain lining is rustproof; resists stains; cleans easily. Counter balanced lid with all-round gasket.
279.95

Model with all the features of the one at left except it's an 18 cu. ft. model that holds 63 1/2 lbs. of food. Automatic interior light. White Acrylic enamel exterior. Five-year guarantee on freezer parts.
219.95

A large 28 cu. ft. model that holds 800 lbs. of food, yet is priced remarkably low! Acrylic enamel exterior and interior. Superwall construction to prevent sweating. Reg. 259.95 value. Save \$35.
Now only **224.95**

Good Values in Kenmore Wringer Washers



Nothing to pay Until May
144.95

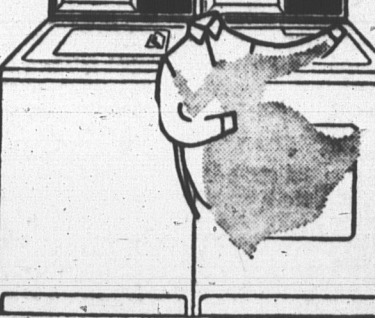
- 10-lb. white porcelain-enamelled tub
- Chromed Lovell safety-wringer
- Electric timer which can be set up to 20 minutes
- Automatic drain pump
- Famous Roto-Swirl agitator
- 5-year guarantee on sealed gearcase

Kenmore wringer washer with the exclusive Roto-Swirl agitator that washes clothes thoroughly clean. Lovell safety-wringer locks in 6 positions.
124.95

Kenmore deluxe wringer washer with the famous Visi-Matic wringer! Double-wall tub keeps water hot. 2-speed motor. Roto-Swirl agitator.
199.95

Automatic Washers and Dryers

Nothing to Pay Until May
Washer was 264.95
209.95
Matching Dryer. Was 189.95. Now 149.95



The washer has 3 programs for all fabrics. Five temperature choices. 6-vane plastic agitator. 12-lb. capacity porcelain tub. Exterior has white Acrylic enamel finish. The dryer has 2 programs and 3 temperature settings.

Kenmore automatic washer with 3 programs for all fabrics. Super Roto-Swirl agitator. Three water levels. Self-cleaning lint filter. 12-lb. capacity tub. Exterior has white Acrylic enamel finish. Priced at—
254.95

Matching Dryer with "soft heat" and lint trap
169.95

Kenmore automatic washer with 6 fabric programs. Just set the dial and the machine automatically adjusts the speed, temperature and time for all fabrics. Automatic bleach dispenser. Infinite water level control. Priced at—
294.95

Matching dryer with exclusive "soft heat"
199.95

9-pc. Cookware Set

1-qt. 2-qt. and 3-qt. saucepans with covers, all in Wear-Ever aluminum. Also 8 1/2" Teflon-coated skillet. Separate cost would be \$37.20. Our price **26.88**

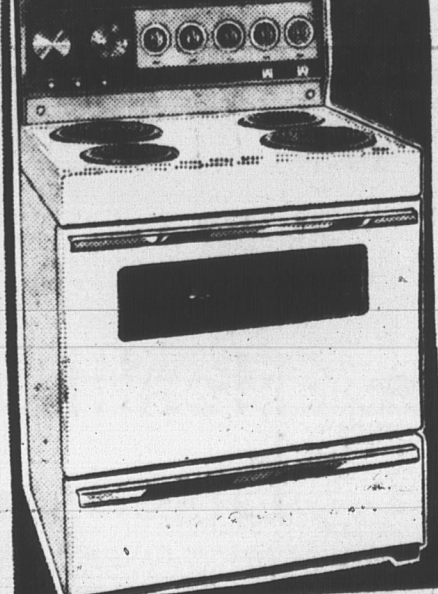
SAVE 6.95 on ALUMINUM DOORS

A fine 3/4" insulating storm-screen door at a special price! Has heat-stem-tasted well over 250,000 times! Adjustable hydraulic closer. Standard size range fits openings from 30" to 36" wide; 78 to 84" high. Buy now and save!
Was 49.95
42.99

Look! Luggage!

1/3 OFF
Pre-holiday special! Choice of any of our fine luggage in stock. Come in early for yours!
1/3 off

Kenmore 30" Automatic Electric Range with Rotisserie



No Payment Until May on Your Account
199.95

Similar Model, but without rotisserie—179.95

- Clock-controlled oven with built-in rotisserie, broiler and oven window
- Top elements have infinite heat switches
- Timed appliance outlet
- Large drawer for storage of pots and pans
- Element rings and porcelain drip bowls are removable for cleaning
- White porcelain enamel exterior finish
- Not exactly as illustrated. Model on sale has different background, handles and oven window.

Save 1/3 On Velvet Latex Interior Wall Finish

4.44 Gal.

Redecorate for spring with this durable, velvety finish. Flows on smoothly and evenly. Washable after 30 days. Choose from a great variety of Decorator colors.

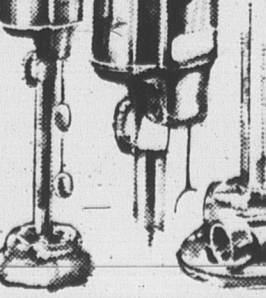
Save 1/3 on Semi-Gloss Enamel
Colors to match Latex above. Dries to a smooth, hard lustre on walls, woodwork and furniture. Scrubbable. Dries in 6 to 8 hours.
Was 6.98 Gal. **4.65**

High Gloss White Enamel
Reg. 10.25 value. 100% titanium dioxide pigment for hard, smooth and bright finish. Silicized to 7.69 resist marring. Gal

Stainless Steel Kitchen Sinks

Double-bowl sink 32x21x 7 1/2" Single-bowl sink 20x20x 7 1/2"
Now **50.88** Now **31.88**

Both sizes are equipped with faucet and spray. Each bowl is stamped from one piece of nickel stainless steel for "beauty and cleanliness." Stainless steel strainers included.



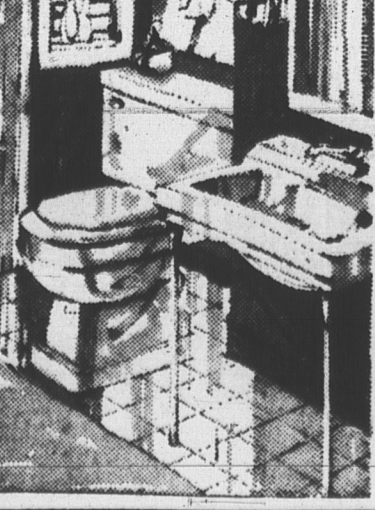
Keep Your Cellar Dry
SUMP PUMP
Was 49.95
37.75

Upright pump with sturdy cast-iron body. Starts automatically when water level rises; shuts off when it drops. Screened inlet. Switch is enclosed in motor casing.

Save 15% on Bath Ensemble

White bathtub, wash basin and toilet. Reg. 114.94 value.
97.70

- Same ensemble in choice of color—116.65.
- Bathtub is of one-piece steel construction with white "lifetime" porcelain finish. Sets into wall at back and ends.
- Wall basin is of vitreous china. About 19 x 17", with legs.
- Toilet is reverse-trap style with seat. New quiet flushing "Estaton" seat in enamel finish.



Note: Fittings are not included with this ensemble.

CARPET SWEEPER

Kenmore model with angle-level action. Bristles set in wood block. 7.99

Look! Camper Trailer with Canopy

Let's go camping soon! Trailer has unitized all-welded steel body and floor. Automotive baked-enamel finish. Tent is vat-dyed and preshrunk poplin. Screened windows with inside zip flaps. Four-ply nylon tube-type tires. Ropes, steel poles and pegs.
369.98