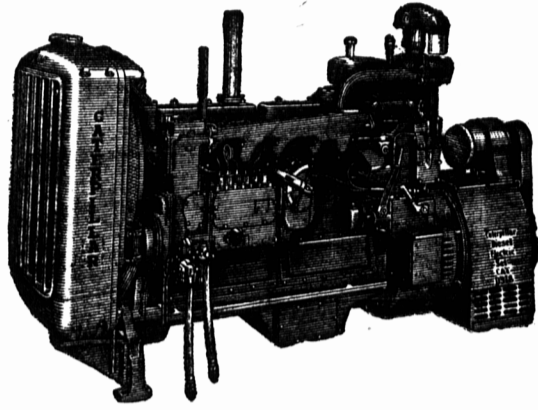


NEW SOURIS FISH MEAL PLANT MARKS ANOTHER STEP FORWARD

Congratulations!

To
SOURIS SEA BY-PRODUCTS LIMITED
On The Opening Of Their
Souris Fish Meal Plant



Two "CATERPILLAR" Diesel Electric Sets are supplying low cost electric power to this modern plant.

SUPPLIED BY

A. PICKARD MACHINERY LTD.
"CATERPILLAR" DISTRIBUTOR
CHARLOTTETOWN

TO MR. ALBERT GRIFFIN
AND THE NEW FISH MEAL PLANT
AT SOURIS

WE EXTEND — BEST WISHES
FROM

"THE FISHERMAN'S FRIEND"
A. KENNEDY & CO. LTD.

JOHN A. MacNAIR, Manager
32 Queen St. CHARLOTTETOWN Dial 3517

OUR CONGRATULATIONS

- * to Mr. Albert Griffin
- * On The Opening Of His
- * NEW FISH MEAL PLANT
- * AT SOURIS

It was a pleasure to have been associated in the construction of this New Plant.

THE ROGERS HARDWARE CO. LTD.
CHARLOTTETOWN

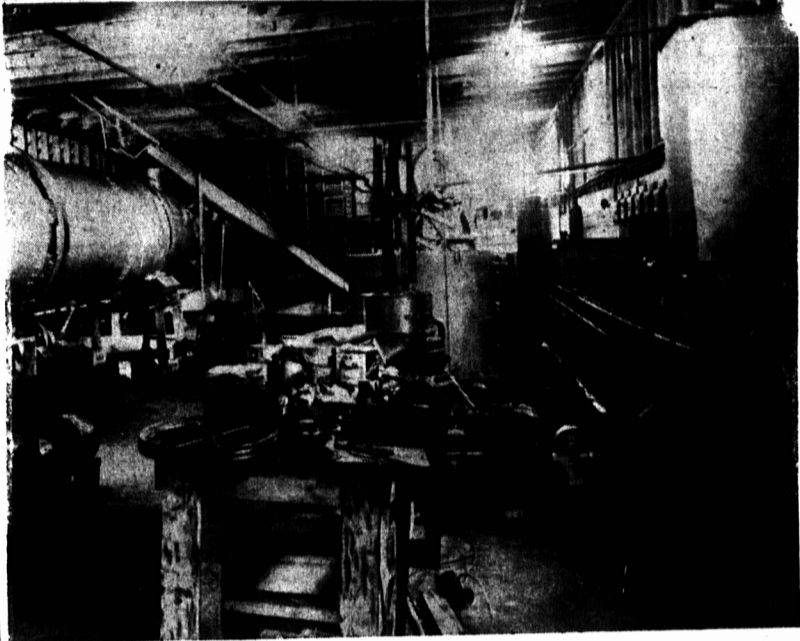
We Offer
Sincere Congratulations
to MR. ALBERT GRIFFIN
on the opening of the
NEW SOURIS FISH MEAL PLANT

BRUCE STEWART
Imperial Oil Agent
SOURIS

A modern, new fish meal plant capable of turning out one ton of meal an hour is operating in Souris under the direction and ownership of Messrs. Albert Griffin and Helgie Zoega. The plant, which has been in operation for almost a month, should prove of great benefit to both the Island's farming and fishing industries. It contains a holding room of 18,750 Cu. feet for holding raw fish. The dimensions of this storage space are 75 x 25 x 10. Leading from the holding room to the main part of the fish meal

plant is a 34 foot worm conveyor capable of carrying up to five tons of fish and offal an hour. Upon coming out of the conveyor the fish is dropped into an eight ton press which presses the juice and oils out of the fish. The remaining residue is known as press cake and is dropped into another conveyor which leads to a 60 foot long dryer. At one end of this dryer is a furnace and at the other there is a blower capable of sucking 5,000 cu. feet of air per minute through the dryer.

The dryer makes 15 revolutions per minute and as the meal drops from wall to wall it is dried by hot air. When it is dried sufficiently it is sucked out by the blower and driven up into a cyclone to cool. From the cyclone it is conveyed to the hammer mill where it is bagged and ready to ship. Messrs. Griffin and Zoega have also installed a pump at the Souris wharf to pump 25 ton of herring out of a vessel each hour. The herring is pumped into vats. (Continued on page 9)



Interior View Of Fish Meal Plant

An interior view of part of the new fish meal plant owned by Mr. Albert Griffin of Souris is shown above. The large cylinder is used for drying the fish meal. Barter's Film Lab.

WE EXTEND
CONGRATULATIONS

to MR. ALBERT GRIFFIN

On The Opening Of

SOURIS SEA BY-PRODUCTS LIMITED

A MODERN FISH MEAL
MANUFACTURING PLANT

H. L. SEAR COMPANY LIMITED

Insurance — All Classes
CHARLOTTETOWN

VERNON FRASER,
Souris Agent.

COMPLIMENTS

from the

**PRINCE EDWARD ISLAND
BAG COMPANY LIMITED**

Suppliers of New Bags being
used in the

**NEW GRIFFIN FISH MEAL PLANT
AT SOURIS**

We Are Pleased To Commend Your Enterprise

P. E. I. BAG Co., Ltd.

Manufacturers of
Highest Quality Jute,
Cotton and Mesh Bags.

Dealers in Jute, Twine and Wire Ties

SUMMERSIDE, P. E. I.

PHONE 2261

Our Compliments and Best Wishes

to MR. ALBERT GRIFFIN

on the opening of his
**NEW
FISH MEAL PLANT
AT SOURIS**

This marks another
progressive step in the
growth of this town as
the centre of a large
fishing industry.

WE ARE HAPPY TO HAVE BEEN ASSOCIATED WITH THIS
ENTERPRISE THROUGH THE PROVISION OF
OIL SEPARATORS IN THE PLANT.

DE LAVAL CO., LTD.

MONTREAL
QUEBEC

CONGRATULATIONS
ON THE OPENING OF
SOURIS SEA BY-PRODUCTS LTD.

EASTERN POTATO CHIPS, INC.
SOURIS

IT IS OUR PLEASURE
To

CONGRATULATE

MR. ALBERT GRIFFIN

on the completion of his

NEW FISH MEAL PLANT AT SOURIS

WE ARE PLEASED TO HAVE BEEN ASSOCIATED WITH
HIM IN THIS CONSTRUCTION — PROVIDING THE MECH-
ANICAL POWER TRANSMISSION AND CONVEYING
EQUIPMENT USED IN THIS PLANT.

GILL & COMPANY, LTD.

ST. JOHN
NEW BRUNSWICK