

Here Is One of Prince Edward Island's Greatest Tourist Attractions

THE WORLD'S LARGEST SMALL TOWN STORE



Pictured above is Holman's Summerside store. It occupies almost a whole business block. Together with its sister store in Charlottetown (pictured below) it is the biggest retail business on Prince Edward Island.

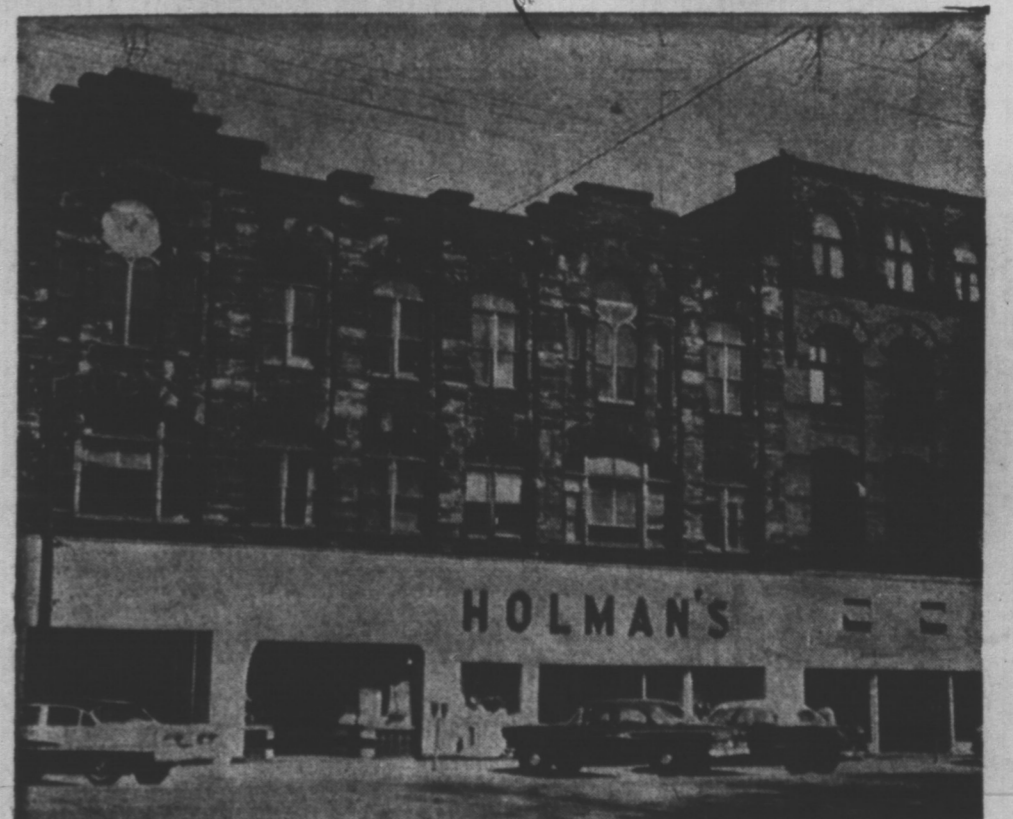
We Invite You To Drop In And See Both Great Stores....

SERVING PRINCE EDWARD ISLAND SINCE 1857

Ten years before Confederation welded the British North American Colonies into one great nation called the Dominion of Canada, the firm R. T. Holman, Limited was founded in Summerside, Prince Edward Island.

There was no official ceremony to mark this occasion in 1857, when Robert Tinson Holman, an enterprising young man of vision, launched into business for himself in a tiny one room general store overlooking the waterfront in the struggling young community of Summerside. There was nothing about the 20 by 30 foot wooden building to set it apart from neighbouring places of business on the front street of what was then a small village with growing pains. Not even the most optimistic cracker barrel philosopher among Summerside's 300 or more citizens could predict that the modest shop would become

"THE WORLD'S LARGEST SMALL TOWN STORE"



Two Stores for Your Convenience

in

Charlottetown and Summerside



HOLMAN'S