



DRIVER CONGRATULATED

Minister Fleming
the hand of his driver,
J.B.D. McCormack,
a soldier tried to
burglars who had
through the finance
home, Mr. Fleming

and his driver surprised the
burglars and scuffled with
them before the burglars
broke away on foot. L. Cpl. Mc-
Cormack chased them and
was kicked by the men before

they got away. Mr. Fleming
called his driver a very brave
man—it was a very courag-
eous thing he did."
(CP Wirephoto)

OBITUARY

OSWALD STEWART
February 12th, 1962. Mrs.
Stewart, one of Kings-
best and most respect-
ed, passed away at
in her 83th year. She
widow of the late Os-
ward who predeceased
years ago.

Mrs. Stewart had
that suffered from arthri-
many years but all
er suffering the ex-
marvellous courage
Christian faith. Deeply
in word and deed,
formed many acts of
and generosity which
her to old and young
many neighbors and
ll long remember the
pitality of her home.
service was held in
Point Baptist Church
he was a member and
acted by her pastor,
V. Molins. The hymns
heard of a Land" and
ght and Good Morn-
sung by the choir and
"Mile of the Way" by
quartet.

ish her memory are
er, Jennie and a son,
also a sister, Minnie,
nt, Mass. Besides her
an infant son and a
Fannie, predeceased

allbearers were her
Peter Stewart, Harold
Robert Yates Jr., Ber-
ney, Stanley Coffin and
Robertson.

ny and beautiful floral
ere carried by Edwin
Boswell Robertson,
arvis, Everett Coffin,
er Robertson. Inter-
s in the Kingsboro
with the Dingwell
charge.

OBITUARY

nie and Marion Ken-
d Percy MacDonald
family
and Peter Stewart and
and Clarence Robert-

and Horace MacDonald
y
ertson and Everett
George and Everett

on and Edwin Robert-
and Boswell Robert-
family
Homer Robertson
Kenneth Mac Gregor
Alexander Robertson

Lorne Rose and Tal-
rt
d and Edgar Robert-

James Tebo
and Wilbur Robertson
d Willie Robertson

Gregor, Amanda and
Gregor and Martha
rt MacGregor
Noel Lamont

Earl Kennedy
am for missions—
am for missions—
e Guild

OF THANKS
ily of the late Mrs.
ewart wish to express
thank you to all who
ers and messages of
and a special word
e to Dr. Kassner for
ness, also to the
and friends who help-
any ways during her
the time of bereave-

**Glenn Sounds Caution Note
In Space Program Hearing**

WASHINGTON (AP) — Lt. Col. John H. Glenn Jr. said here his fiery return to earth "could have been a Bad Day at Black Rock." He hinted that he and his fellow astronauts are ready for worse emergencies in the future.

"Not every flight can come back as successfully as the three we have had so far," Glenn told the House of Representatives science and astronautics committee.

Glenn testified as the committee opened hearings on the United States administration's \$3,500,000,000 space budget request for the coming year. With him were the two men who preceded his thrice-around-the-world space orbit last week by making shorter flights, Cmdr. Alan B. Shepard and Capt. Virgil I. Grissom.

Glenn sounded his note of caution when asked whether it would be better to have trained scientists along on future flights.

Because of the possibility of emergencies, Glenn said: "At least for the immediate future we can better use pilots than scientists," although it is hoped that space craft someday will be large enough to carry specialists too.

GIVES DESCRIPTION
Glenn gave a description again of his own uneasiness—the possible loss of his heat shield when he was still aloft. Without it, scientists agree he would have been literally burned up.

"A radio signal had indicated to the ground control that the heat shield on the capsule had come unlatched. Shepard said 90 per cent of those on the ground thought the signal was a false one but "we reached the decision that we could not afford to take a chance." Glenn was told to retain the braking rockets, to help hold on the heat shield, instead of jettisoning them normally.

During the re-entry, Glenn said, flaming bits of wreckage rained past his window. Had they been parts of the heat shield instead of the rocket package, he testified, "it could have been a Bad Day at Black Rock." That referred to an old movie title that has come to mean a time of disaster.

The first witness in the committee's study of the \$2,260,000,000 budget request for the Na-

tional Aeronautics and Space Administration to carry on manned space flight was James E. Webb, chief of the agency.

HAVE ONE OFFER
Webb said that one distinguished United States scientist has volunteered to go along with astronauts on the first mission to the moon. Webb did not identify the volunteer.

He said the scientist declared that if he could be assured of staying on the moon two weeks and of being able to report back to earth the information he had learned, he would be happy to take the chance.

Webb mentioned this in connection with a question on reported plans of the Russians to land a man on the moon and attempt to recover him with a later flight.

Webb said the Russians likely will place a man in orbit around the moon before the U.S. does, and also probably will be the first to fly several men around the moon and return them to earth.

He said the U.S., however, probably will be first to land a man on the moon and return him safely.

"I believe we have a greater capacity to do this than the Russians do," he said.

**PM Declines
Defence Reply**

OTTAWA (CP) — Prime Minister Diefenbaker declined a direct reply to Paul Hellyer, Liberal defence critic, on whether there is a secret Canada - United States agreement for provision of American nuclear warheads to this country on outbreak of nuclear war.

Opposition Leader Pearson asked for comment on Washington reports quoting U.S. military sources as saying that nuclear warheads supplied to Canada after outbreak of war would be of no use.

The prime minister said he didn't intend to make observations in such an important matter on the statements of some anonymous individuals.

WELSH COUNTY

The largest county in Wales is Carmarthenshire which covers 588,472 acres.

**Teamsters Agent
Resigns In Nfld.**

ST. JOHN'S, Nfld. (CP) — Larry J. Daley, business agent for the Teamsters International Brotherhood in Newfoundland, Wednesday announced his resignation and revealed that the union's St. John's local has been placed under trusteeship by the International executive.

Daley also quit as president of Local 855 Transport and Allied Workers Union, composed mainly of truck drivers. The local has about 700 members.

Teamsters International officers from Washington and Halifax have been in St. John's for several days.

Mr. Daley announced his resignation at a press conference. He said his resignation was tendered Feb. 23.

He said he resigned because of the "uncompromising position in which the union was placed in its affiliation with the International Teamsters Union."

The union leader said he had

objected strongly to a friendship pact signed between President James Hoffa of the Teamsters and the "Communist-dominated" Mine, Mill and Smelter Workers, both independent unions.

Mr. Daley said that when the International failed to break the pact, he had no alternative but to sever connections with the Teamsters. He charged the Teamsters "had betrayed the interests of unionism."

In this, Mr. Daley said he was supported by the Canadian Labor Congress, the American Federation of Labor and the Canadian and United States governments.

He said he has no future plans.

PLAN BUILDING SESSION
OTTAWA (CP)—The National Research Council - sponsored conference of Canadian building officials will be held in Calgary April 25-27. The conference will review studies being made by a special committee on a proposed nation-wide association of building officials.

**Oliver Corp. Plans
To Close Plants**

CLEVELAND (AP) — The Oliver Corp. will close its Battle Creek, Mich., plant Aug. 1 and move its operation to plants in Brantford, Ont. 1 and Shelbyville, Ill., the president of the firm said today.

S. W. White Jr. said the production of combines would be taken over by the Brantford plant of Oliver Corp.'s subsidiary, Cockshutt Farm Equipment of Canada Ltd.

Oliver Corp., a subsidiary of White Motor Corp. of Cleveland, does not plan to relocate any of the 600 employees at Battle Creek, White said. He said there would be no appreciable increase in the number of employees at the Shelbyville and Brantford plants as a result of the move.

White said the Battle Creek plant was being closed because of "too much excess capacity, causing continuing and foreseeable unprofitable operations."

**Nfld. Paper Mill
To Push Output**

CORNER BROOK (CP) — A spokesman for Bowaters Newfoundland Pulp and Paper Mills Limited said Wednesday the company's local mill expects to go on operating at capacity. The mill has been running at full production six days a week for more than two years.

Newfoundland's other paper mill, operated by Anglo-Newfoundland Development Co. Ltd. at Grand Falls, is running seven days a week.

There had been reports that overproduction in the newsprint industry would require a reduction in Newfoundland output during the coming summer.

Go Ocean LIMITED

Halifax — Montreal Daily

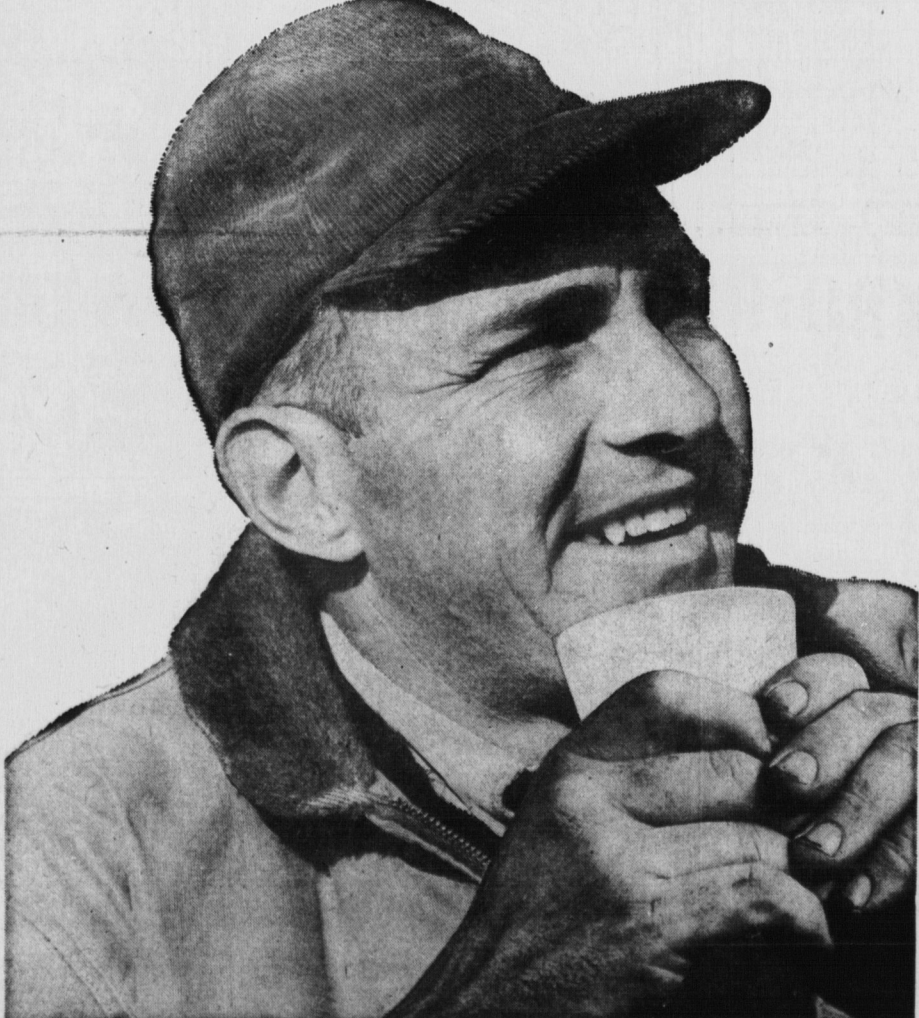
Stay at the Queen Elizabeth Hotel in the heart of Montreal, adjacent to Central Station.

The Ocean Limited is a way of life—The instant you step aboard you feel the change. Every appointment, every facility, every service has but one purpose—Your Pleasure! You leave worry behind, and time passes swiftly—pleasantly. Enjoy the courtesy, comfort and economy of the Ocean Limited!

- Smart, modern air-conditioned coaches.
- Fully licensed dining and lounge facilities.
- A wide choice of restful sleeping accommodations.
- Convenient connections to and from Matane, Gaspé, Saint John, Charlottetown, Sydney and Newfoundland.

Sit Back-Relax-Go

Canadian National The way of the Worry-Free



WHETHER YOU LIKE IT STRONG, RUGGED, MILD OR WEAK

...today's King Cole tea is the Full-flavor blend. It is especially blended to fully satisfy any taste. So make it strong, rugged, mild or weak, King Cole's Full-flavor blend will give you what you want... a full-flavored cup of tea the way you like it. Try today's Full-flavor tea

OLD ENGLISH for strength and character

KING COLE TEA
Old English Blend

ORANGE PEKOE for delicate flavor

Moore & McLeod Ltd.

THIRD FLOOR

Wonderful News for "Do-it-Yourselfers"!

PRE-PASTED Wallpaper

no muss — no fuss — wet it — apply it to the walls!

- At an amazingly low price!
- As low as 45c S. R.
- Pre-pasted trays supplied free with every purchase of room lots

There are 50 beautiful patterns from which to choose in livingroom, bedroom, and kitchen wallpapers. There are designs and colors to suit every room in your home.

ALSO ON SALE ARE WALLPAPER LOTS CONSISTING OF 4-5-6 rolls. Regular and pre-pasted quality. Borders are available at the regular price.

2.95 & 3.95 per lot

1 1/2 Price

reg. price 85c S. R.
Now 42 1/2c S. R.

Pro Sheen Flat Paint

- A vinyl latex paint
- Easily cleaned with soap and water
- Dries fast — only 30 minutes
- Use roller — brush — or spray
- For walls and woodwork
- 13 beautiful pastel shades from which to choose, also white
- Reg. 2.10 qt.

1.59

QT.

WHITE ENAMEL

- Master painters' enamel
- High gloss — non-yellowing
- Quick drying
- Reg. 2.95 qt.

2.09 QT.

SAMPLE RACK CURTAINS

One of a kind curtains which have been displayed on our racks. Group includes livingroom, kitchen, cafe, bedroom curtains. Slightly soiled.

1/2 Price

DRAPERY MATERIAL

One table of 1/4 price materials, consisting of plain and floral materials. Smart designs and novelty weaves.

1/2 Price

PLAIN BARK CLOTH

One table of plain weave fabrics in assorted colors suitable for slip covers and drapes. 48" wide. Reg. 1.96 to 3.25 yd.

98c yd.

ON THE ISLAND IT'S

MOORE & McLEOD LTD.

"YOUR FAVORITE SHOPPING CENTRE"

AD SKIN
Removes on face or body.
as Red Scaly Itching Skin.
Pores are quickly cleared by
foam rich in minutes. Anti-
bacterial. Makes skin softer.
Prevent. Ask your druggist for
ointment and soap. Revisit-
look better than.