

CHURCHES

(Continued from page 8)
ted Churches. Sunday, Nov. 21
Sunbury 9:30 a.m. Rev. Gerald
G. Wyrwa, speaking. Mt. Her-
bert 7:30 p.m. Rev. John G.E.
Ball, speaking.
YORK Pastoral Charge, the
United Church. Rev. F.W. La-
vey, minister. Sunday, Nov. 21.
Central 11 a.m. York 2:30 p.m.
dedication of Memorials.
Brackley 7:30 p.m.

PRINCE

FUNDAMENTAL BAPTIST
Church, Bedeque. Worship 10:45
a.m. Sunday School 12 noon. Ev-
ening Service 7:30 p.m. Prayer
and Bible Study, Thursday 8:00
p.m. Pastor, Donald Moses.

TRYON — Bonshaw United
Baptist Pastorate. Sunday, Nov.
21. Bonshaw. Worship. (Com-
munion) 11 a.m. Westmoreland
Church School 2 p.m. Worship 3
p.m. Tryon: Church School 10:00
a.m. Evening Worship 7:30 p.m.
Everyone welcome. Rev. Ed-
ward G. Britten, pastor.

O'LEARY United Pastoral
Charge. Rev. Elroy McKillop,
B.A., B.D., minister. Combined
worship for West Devon and
Brae at the Brae 9:45 a.m.
Bloomfield 11:15 a.m. O'Leary
7:30 p.m.

KENSINGTON Presbyterian
Church Pastoral Charge. Keir
Memorial 11 a.m. Freetown 3:00
p.m. Kensington 7:30 p.m. Com-
munion Sunday services. Rev.
George R. Tannahill, minister.

CHRISTIAN Church, Summ-
erside. Sunday, Nov. 21. Minister,
Rev. D.L. Howlett. Bible School:
10 a.m. Classes for all ages.
Worship and Communion: 11:00
a.m. Speaker Rev. B.F. Howlett.
Special music: The Ten Singing
Men from St. John, N.B. Even-
ing Service 7 p.m. Rev. B.F.
Howlett speaking. The Ten Sing-
ing Men singing. Everyone wel-
come.

BEDEQUE North Pastoral
Charge, the United Church. Min-
ister, Rev. R.M. Shaw. North
Bedeque: Church School 10 a.m.
Worship 11 a.m. Joint Layman's
service for North Bedeque, Free-
town and Traveller's Rest at
North Bedeque Church.

ALBERTON and West Point
Presbyterian Services. Rev. J.S.
Mr. A.R. Murray, Catechist.
West Point: Sunday School 10:00
a.m. Worship 11 a.m. Alberton:
Sunday School 7 p.m. Worship
7:30 p.m.

ALBERTON Pastoral Charge,
the United Church. Rev. David
MacDonald, minister. Freetown:
Worship 9:30 a.m. Alberton:
Worship and Sunday School 11:00
a.m. Cascumpec: Sunday School
10 a.m. Worship 7:30 p.m.

MONTROSE Pastoral Charge,
the United Church. Brown Jar-
vine, minister. Campbellton 11
a.m. Elmsdale 3 p.m. Montrose
7 p.m. Sunday Schools at usual
hours.

ANGLICAN Services, Parish
of Port Hill. Rev. Delmont Yee,
rector. Sunday next before Ad-
vent. 11 a.m. Lot 11 and Inver-
ness at Lot 11 7:30 p.m. Port
Hill and Ellerslie at Ellerslie.
(Service of Witness for the Deaf-
ness AYPDA) AYPDA Saturday 7
p.m. In St. John's Church, El-
lerslie. All members are urged to
attend.

TRYON Charge, the United
Church. Sunday, Nov. 21. Sun-
day Schools: Tryon 10 a.m. Cra-
paud 11 a.m. Cape Traverse 6:30
p.m. Worship: Tryon 11 a.m. Cra-
paud 3 p.m. Cape Traverse 7:30
p.m. Minister, Rev. A.H. O'-
Brien.

THE PRESBYTERIAN
Church, North Tryon and Brad-
albane. North Tryon: 11 a.m.
Worship Service conducted by
Mr. Ralph Balderson of Charlot-
teton 12 noon Sunday School.
Bradalbane: 3 p.m. Worship Ser-
vice conducted by Mr. Ralph
Balderson of Charlotteton. In-
terim-moderator, Rev. Raymond
L. Gillis.

FREE CHURCH of Scotland,
Worship: Summerside 3 p.m.
Cape Traverse 7:30 p.m. Mr. Da-
vid Compton will conduct the
services. Rev. Ewen E. Mac-
Dougall, interim-moderator.

BEDEQUE Pastoral Charge,
the United Church. Rev. R.M.
Cameron, minister. Albany:
Worship 9:30 a.m. Bedeque:
Church School 10 a.m. Worship
11 a.m. The Sacrament of Bap-
tism will be administered at this
service. Borden: Church School
10 and 11 a.m. Worship 7:30 p.m.

RICHMOND BAY Charge, the
Presbyterian Church. Men meet
at the home of Mrs. John Bis-
hop, at 8 p.m., Friday, Nov. 19.
Worship, Nov. 21. Victoria West
11 a.m. Tyne Valley 3 p.m. Free-
land 7:30 p.m. Charles E. Hoek-
stra, student minister. Rev. L.R.
Fries, interim moderator.

ANGLICAN Church, Parish of
New London. 8 a.m. Holy Euch-
rist, St. Mark's, Kensington. 7:30
p.m. Evening Prayers, St.
Mark's, Kensington. 9:30 a.m.
Holy Eucharist, St. Thomas's,
French River. 11 a.m. Holy
Eucharist, St. Stephen's, Burling-
ton. Rev. E.J. Flinder, rector.

SPRINGFIELD — ALMA —
O'Leary United Baptist Church
Services. Rev. Maxwell Nesbitt,
pastor. O'Leary 10:30 a.m. Alma
3 p.m. Springfield 7:30 p.m. Ev-
angelist services beginning in
Springfield Tuesday, Nov. 23 at
8 p.m.

UNITED CHURCH, Kensing-
ton. Church School 9:30 a.m. Ser-
vices 11 a.m. and 7:30 p.m. Sum-
merside Service 9:30 a.m. Rev.
G.D. MacBeth, B.A., B.D., minis-
ter.



MIRROR, MIRROR ON THE WALL . . .

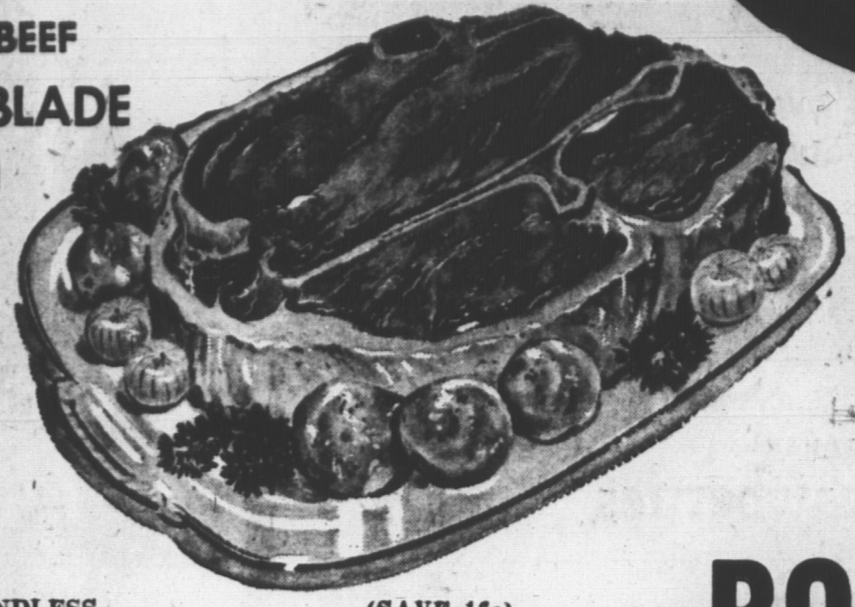
WHO'S THE THRIFTIEST COOK OF ALL?

PRICES EFFECTIVE
'TIL CLOSING TIME
SATURDAY, NOV. 20th

It's you of course, when you shop at



GOVERNMENT INSPECTED BEEF
SHOULDER or BLADE



PRIME Rib Roast LB. 63c
FRESH Brisket Beef LB. 29c
RIB Stew Beef LB. 43c

ROAST 45c LB.

SIRLOIN OR T BONE STEAK 79c LB.

SWEET PICKLED NECK RIBS 4 LBS. 59c

DEVON RINDLESS BACON 1 LB. PKG. 79c (SAVE 16c)

MAPLE LEAF BOLOGNA LB. 33c

GOLDEN RIPE BANANAS LB. 18c

CHOICE WING OR ROUND LB. STEAK 65c

LARGE FIRM CUKES 2 FOR 29c

JUICY GRAPEFRUIT 3 FOR 29c

CRISP ICEBERG LETTUCE 29c EACH

GRANULATED SUGAR 10 Lbs. 79c (SAVE 16c)

CREAM OF THE WEST (SAVE 40c) FLOUR 25 LB. BAG \$2.09

CLOVER FARM (2 CUP SIZE) TEA BAGS 60 BAGS 85c

CLOVER FARM LIQUID DETERGENT 24 OZ. BOT. 45c

MONARCH MARGARINE 2 1 LB. PKGS. 65c

BRIGHTS (SAVE 7c) PEACHES 2 15 OZ. TINS 51c

DUNCAN HINES (SAVE 9c) CAKE MIXES 2 PKGS. 89c

PURITY ROLLED (SAVE 10c) OATS 5 LB. BAG 65c

WASCO SULTANA (SAVE 4c) RAISINS 15 OZ. PKG. 35c

CLOVER FARM (SAVE 10c) PEANUT BUTTER 3 LB. JAR \$1.19

DOLLAR BUYS

CLARK'S (SAVE 23c) BEANS (IN TOM. SAUCE) 5 20 OZ. TINS \$1.00

CLOVER FARM (SAVE 8c) PEAS A P.E.L. PRODUCT 5 20 OZ. TINS \$1.00

CLOVER FARM APPLE (SAVE 11c) JUICE 3 48 OZ. TINS \$1.00

BRIGHT'S TOMATO (SAVE 11c) JUICE 3 48 OZ. TINS \$1.00

CLOVER FARM FRESHLY GROUND RED CUP COFFEE 1 LB. BAG 89c

CLOVER FARM MACARONI READY CUT 2 LB. PKG. 39c

WILLARDS TOP SELECTION (SAVE 10c) WILLOCRISP 1 LB. BAG 59c

CLOVER FARM FIG BARS 1 1/2 LB. PKG. 53c

AVON (SAVE 6c) BARTLETT PEARS 2 20 OZ. TINS 59c

CLOVER FARM JAM (SAVE 6c) RASP. or STRAWBERRY 24 OZ. BOT. 53c

CLOVER FARM (SAVE 4c) APPLE SAUCE 2 20 OZ. TINS 39c

NEW CEREALS

CORN CHEX 2 9 OZ. PKGS. 45c

RICE CHEX 9 OZ. PKG. 33c

WHEAT CHEX 18 OZ. PKG. 39c

FROZEN FOODS

Fraser Vale French Fries 2 LB. BAG 44c

Bird's Eye Orange Juice 2 6 OZ. TINS 49c

NON FOOD SPECIALS

STURDY PLASTIC Pails 10 QUART 79c

DR. LAMBERT'S Cough Syrup BOT. 59c (SAVE 10c)
SILVIKIRIN (SAVE 40c) Shampoo BOT. 89c

