

# New plants at Morell, S'side, Ch'town will spur Island's fishing industry

Unprecedented activity in the Prince Edward Island fishing industry for 1964 was heralded last year in announcements by private and government sources.

Last August, Premier Walter R. Shaw confirmed that the provincial government would co-operate with a Canada-Norwegian development organization in the construction of a multi-million dollar, fully integrated fish and processing plant at Georgetown, in the eastern part of the province.

Work on the plant is to begin this spring and operations commence in the fall. It was expected the project would eventually give employment to between 700 and 800 people.

### SHIPYARD MOVES

Almost simultaneous with the announcement of the Georgetown plan was the report that Bathurst Marine Industries of New Brunswick would move its entire operation to the same area. A start was made late last year.

In December a new fish processing plant was announced for Red Head Wharf in the immediately 200 feet with a heating unit and laundry room situated in the center of the building.

A convalescent home is also expected to be built adjacent to the homes. The committee made certain that there was enough space available for this home when the lot was purchased.

When erected the building will be situated on the east end of Pleasant Street.

Chairman of the finance committee for the project is James L. Saunders.

### WORK ON BANK

Work on a new Bank of Nova Scotia which began early last fall is nearing completion and will be officially opened on April 4.

A tentative official opening date had earlier been set for Feb. 24 but the date was advanced when it was felt that it would be inconvenient for out of the province officials to be here.

The building is being erected by M.F. Schurman Ltd. along with a number of sub-contractors. Manager P.C. Moore said recently the only work remaining on the building is the installing of a number of doors and completion of the interior decorations. Also, he said, there are a few minor repairs to be made.

An attempt will be made to have as many as possible of the retired managers of the branch on hand for the official opening.

Also attending will be J.M. Hayman, the Bank's regional assistant general manager from Saint John.

The opening will consist of an open house between 2 and 4 on the afternoon of April 4. Also attending the opening will be the president of the Kensington board of trade and towns Mayor Everett Champion.

ell area. It is expected to provide employment for 60 to 70 people.

The best and most modern equipment will be installed in the plant and lobster will be processed there for the first time in nine years when the season opens in May.

Chicken haddie is also to be processed during the ground-fish months of July through September. October is usually given over to mackerel fishing.

The plant is continuing to operate under the name of the Morell Packing Company but considerable money has been invested by people outside the province. A.W. Lewis, Shediac, N.B., is the manager. Gerald Barry, Morell, is in charge of fishermen's equipment for the company.

### S'SIDE PLANT

At Summerside, in the western section of the province, Island Packers Limited have established a new plant on Queen's wharf. It is to go into operation this spring. Employment is expected to run from 200 to 300 persons for a 18-month period each year.

The plant covers an area of approximately 75 feet by 150 feet.

Plans call for the plant to engage in all phases of the lobster fisheries, live, fresh cooked, frozen and canned. In addition to lobster, it is intended to deal in smelts, oysters, mackerel, chicken haddie, clams, and all other available products of the sea.

It is likewise intended to establish, at the plant, cold storage facilities and thereby be able to freeze small fruits such as strawberries, blueberries, etc., and to engage in this phase of industry as well.

### VALUE OF LANDINGS

Company personnel includes J.E. Burden, president, Charlottetown; Everett Chamion, vice-president; Kensington; James Cousins, treasurer; Park Corner; and Fred L. Arsenault, secretary, Summerside.

The value of sea products landed by Island fishermen last year was \$4,600,000. This compared with \$4,650,000 for 1962.

Total weight of sea products landed in 1963 was 48.9 million pounds compared to 54.9 million pounds for 1962.

The lobster catch in 1963 was down by over a million pounds, but increased prices kept the total value in line with revenue received in 1962.

Lobster value and poundage for the 1963 season with 1962 figures in brackets follow: \$3,156,000 (\$3,218,000), and 7,375,000 pounds (8,700,000 pounds). Landings of sea fish for 1962 and 1963 were 37,600,000 pounds and 38,300,000 pounds respectively.

### OYSTERS IMPROVE

The oyster industry last year

showed an improvement with landings of over three million pounds valued at \$385,000 compared with 2,400,000 pounds valued at \$300,000 in 1962.

Irish most harvested was down about 7,000,000 pounds compared to the previous year. In 1963, 10.5 million pounds was harvested valued at \$162,000, while in 1962 17.3 million pounds brought a return of \$288,000.

Cod fish landed in 1963 totalled 6,700,000 pounds valued at \$380,000 while in 1962 the 8,700,000 pounds resulted in a revenue of \$311,000.

During the year the department under the Hon. Leo Rossi-

ter conducted a number of educational and technical assistance courses designed to improve the efficiency of fishermen. These courses included navigation, net handling and plant operation.

The minister, and the deputy minister, Eugene Gorman, while looking forward to the expansion program now taking place have also been busily engaged in conferences widely affecting the industry as a whole.

Last year, Mr. Gorman was given an opportunity of viewing the operations of the fisheries in several European countries. On his return he reported the need for expanded research, on a federal level, ed-County.

During the year one steel built trawler joined the 20 dragger fleet operating out of Souris. Close to \$4,000,000 is invested in boats and equipment by Island fishermen who in numbers total nearly 3,500. About 42 per cent of the fishermen population is concentrated in Kings County. On his return he reported the need for expanded research, on a federal level, ed-County.

OVER SEVEN MILLION LBS. OF LOBSTER WAS WORTH \$8.2 MILLION IN '63



KENSINGTON FIRE DEPARTMENT IS UP TO DATE, WELL EQUIPPED

## NEW BANK, SENIOR HOUSING

# Kensington has building spurt

Construction in the town of Kensington in 1963 included an addition to the old high school, the erection of a new bank and the building of a four-unit Senior Citizens home.

Work on the old high school consisted of adding four new rooms to accommodate the overflow of students.

There are now 10 rooms and all are occupied with eight regular grades, one remedial class taking in grades one to eight and a supplementary class for grades one to three.

The new rooms, considered a great improvement over the old structure, have soundproof ceilings, fluorescent lights, radiator windows, etc. An additional furnace has also been installed to heat the extra space.

The four-unit senior citizens home was late getting started but is expected to be finished by the completion date in mid-May.

The project, being erected by the firm of Malcolm MacLean of Charlottetown, got underway in December.

The building extends approximately 200 feet with a heating unit and laundry room situated in the center of the building.

A convalescent home is also expected to be built adjacent to the homes. The committee made certain that there was enough space available for this home when the lot was purchased.

When erected the building will be situated on the east end of Pleasant Street.

Chairman of the finance committee for the project is James L. Saunders.

Work on a new Bank of Nova Scotia which began early last fall is nearing completion and will be officially opened on April 4.

A tentative official opening date had earlier been set for Feb. 24 but the date was advanced when it was felt that it would be inconvenient for out of the province officials to be here.

The building is being erected by M.F. Schurman Ltd. along with a number of sub-contractors. Manager P.C. Moore said recently the only work remaining on the building is the installing of a number of doors and completion of the interior decorations.

Also, he said, there are a few minor repairs to be made. An attempt will be made to have as many as possible of the retired managers of the branch on hand for the official opening.

Also attending will be J.M. Hayman, the Bank's regional assistant general manager from Saint John.

The opening will consist of an open house between 2 and 4 on the afternoon of April 4. Also attending the opening will be the president of the Kensington board of trade and towns Mayor Everett Champion.

## BUILD BETTER with BLOCK

Architectural Designer  
ROBERT A. TIG, Omaha, Nebraska

### NO MAINTENANCE PROBLEMS... WHEN YOU BUILD WITH BLOCK

Exterior walls of concrete block require a minimum of effort and expense, yet retain their original appearance almost indefinitely. They give the owner complete option: The block can be left in natural color, it can be of colored aggregate, with a number of tones available; or it can be painted as easily as any other material.

**You're invited to visit our plant and see our Columbia block masonry at work!**

## P.E.I. Concrete Products Ltd.

(OFFICE) 238 Summer St. Summerside  
Phone 436-2424

(PLANT) Pope Road  
Phone 436-5814

# FROM FARM TO MARKET!



Prince Edward Island farmers are providing themselves with complete co-operative produce marketing service.

From the time their produce is delivered to the Co-op Warehouse or loaded on ship, railway car, or transport truck it is handled by experienced produce men employed by and working for farm people.

They also know that through their Co-operative they have gained influence and powerful voice in the marketing of their farm products.

You, too can share these benefits. Join the Co-operative.

## Summerside CO-OP Assn. Ltd.

FARM SERVICE  
PHONE 436-2255

FEEDS AND EGGS  
PHONE 436-5114

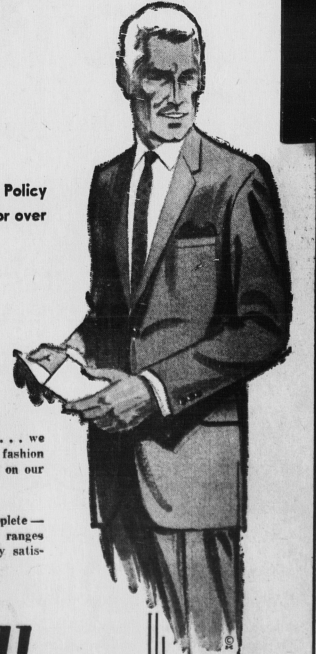
SUPERMARKET  
PHONE 436-2117

# Summerside

this is the store that  
**Confidence Built!**  
Keeping Pace  
With The Times

With Honest, Sound, Solid Merchandising Policy to the People of Summerside and Area for over a Quarter of a Century.

- We always feature high-quality merchandise that you can trust at prices you can afford.
- When we have a sale it is a real sale of outstanding bargains. Our sales are short, sweet and good or we don't have them.
- We do not dictate styles to our customers... we make a sincere effort to please everyone. The fashion trends of the men's world are always reflected on our shelves and racks.
- Every effort is made to make our service complete — complete size ranges... complete style ranges... complete alteration service... completely satisfied customers.



**Maurice Mill Ltd.**  
CLOTHING OF DISTINCTION FOR MEN  
Water St. Summerside