

Senate Reps: Cory Large
Michelle MacCallum
Kathy Morrison
Patricia Shields
Mapus Senate Rep: Paula Gauthier
Mapus Rep: Sharon Mullen

Notice to International Students:

The P.E.I. Multicultural Society are having two open days this Friday (21st) and Saturday (22nd). Give them a call at 368-8393 for more information. Also, I know he deserves more recognition than this, but time is limited, so the U.P.E.I. I.S.A. would just like to say a huge thanks to Sam Baisy for everything - without him, we wouldn't exist. We wish him all the best for the future.

Anyone interested in chairing or co-chairing the Shinerama Committee, please contact the Student Union, 566-0530.

We can't go back to the past when there were no factories or cars or power plants. We need the conveniences of modern life. But can we stop the damage they cause? Can we find a way to live in harmony with our environment? The answer is "yes" if we all pitch in, whether environmental issues are "in style" or not.

This week's tips:

The Environmental Driver

Many students drive to school everyday. The car is only part of the negative impact on the environment; the other is the driver. Here are some driving and operating tips that can help.

1. Turn off the engine when sitting and waiting.
2. Avoid idling your engine for long periods after a cold start. Even in cold winter weather, it is not necessary to idle more than 30 seconds. Drive slowly for the first few kilometres to let your engine warm up.
3. Block heaters have been found to reduce air pollution (by reducing engine idling) when used for 2 to 3 hours before morning start-ups during the winter.
4. Avoid jack-rabbit starts. Smooth acceleration polluted less and saves fuel.
5. Drive at moderate speeds. Most cars use about 10% less fuel when they are driven at 90 km/hour rather than 100 km/hour.

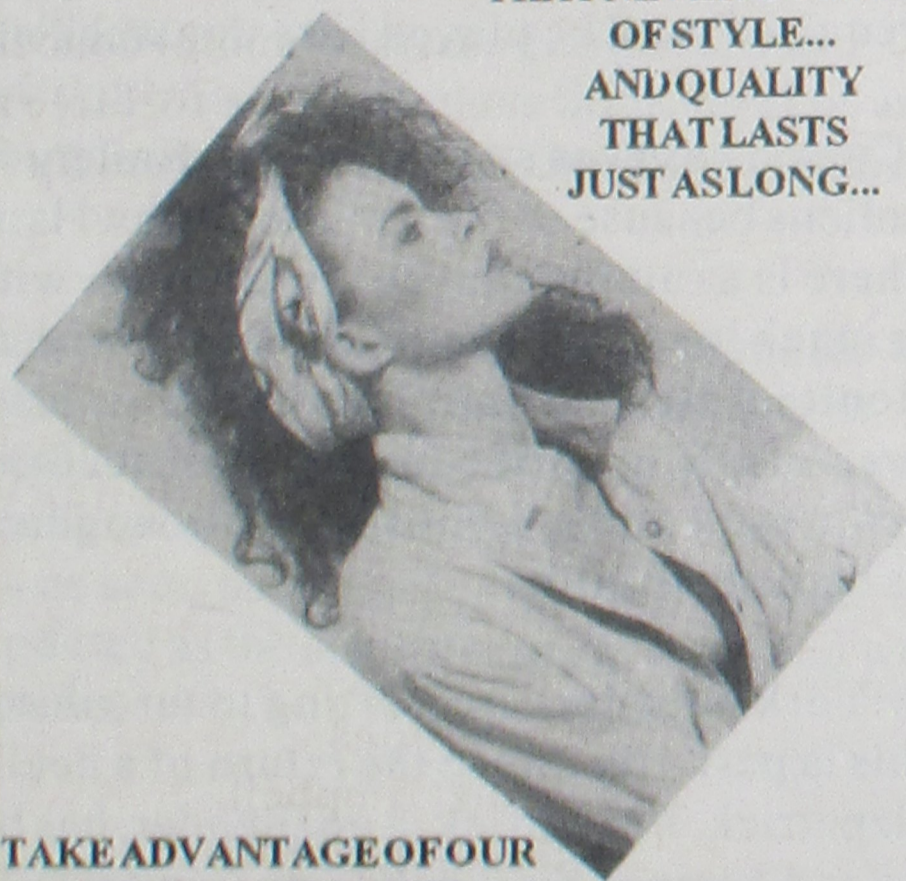
Student Union Green Committee

Next meeting: Friday, February 21 12:30 2nd floor Barn.

RT's

ESPIRIT

THERE IS NO BETTER VALUE
THAN TIMELESS FASHION...
THAT NEVER GOES OUT
OF STYLE...
AND QUALITY
THAT LASTS
JUST AS LONG...



TAKE ADVANTAGE OF OUR
STUDENT DISCOUNT
OFFERED EVERY DAY
OF THE WEEK!!!

