

Rural Beautification Competitions For 1950 Home and School Improvement Classes

\$1250—Cash Prizes—\$1250

SPONSORED BY

P. E. I. Rural Beautification Society

OFFICERS

Hon. President—His Honour Lt.-Gov. J. A. BERNARD
President—Lt.-Col. E. W. JOHNSTONE, E.D.,
Kensington

Vice-President—Major J. A. MacDONALD, Cardigan
Secretary-Treas.—Mr. H. B. CHANDLER, Ch'town.

Directors: Mrs. MALCOLM MacLEOD, Lorne Valley.
Mr. E. D. REID, Charlottetown
Mr. RUSSELL ROGERS, Brae.
Mr. E. S. BURLEIGH, Ellerslie.
Mr. P. W. TURNER, Charlottetown

Judges:
King's: Mr. WALTER L. BEER, Roseneath.
Queen's, Mr. J. HARRY BROWN, Kensington
Prince: Mr. C. RALPH MONKLEY, Miscouche
Provincial: Mr. GORDON C. WARREN,
Dominion Exp. Farm, Ch'town.

INTRODUCTION

Once again the P. E. I. Rural Beautification Society is pleased to announce its Annual Competitions.

As in previous years the emphasis is on improvement and the home and school and community, with the greatest room for improvement naturally has the greatest opportunity in the competition.

This year we have added special prizes for school and community improvement.

We have been greatly encouraged by the results of previous competitions and believe the efforts of several hundred people made annually towards improvement of their dwellings and school properties will have a definite effect on the appearance of our whole rural countryside—and make our Fair Island more attractive to its residents—more enticing to tourists.



Before 1949 Competition

RULES OF COMPETITION

Eligibility—

- (a) HOMES and SCHOOLS — Any Rural Home or School situated outside limits of any City or Incorporated Town in Prince Edward Island shall be eligible for the competition.
- (b) Participation in last or previous year's competitions shall not bar any Home or School from the competitions.
- (c) COMMUNITIES—Any Women's Institute or other community group may enter the competition for community improvement.

Entries—

Entries shall be mailed to the Secretary, using form provided on this page not later than May 1st, 1950.

Judging—

1. Initial judging will begin May 4th, 1950.
2. Final judging will commence Sept. 1, 1950.
3. Contestants must abide by the Judge's decision which shall be final.
4. ENTRANCE FEE of 50 cents MUST accompany all applications.
5. All work done in Spring of 1950 prior to judging will be credited to the contestant.
6. Planting of suitable Native Trees will receive the same consideration as imported ornamentals.
7. NURSERY STOCK—The Cotton Memorial Trust Nursery has available trees, shrubs, and some perennial plant stock at very reasonable rates. Write for list of materials to Mr. Robert Snazelle, The Forest Nursery, R.R. 5, Charlottetown.
8. As this is an IMPROVEMENT COMPETITION only work done to EXISTING structures, either Home or Schools, shall be scored.
9. Homes shall for the purposes of this competition include all barns and outbuildings within the precincts of the residence.
10. All TROPHIES are for Annual Competition only.
11. Snapshots of unimproved properties may be taken by contestants wishing to make an early start before first inspection. Judges normally take pictures of properties on first and final inspection.

INFORMATION AVAILABLE TO CONTESTANTS

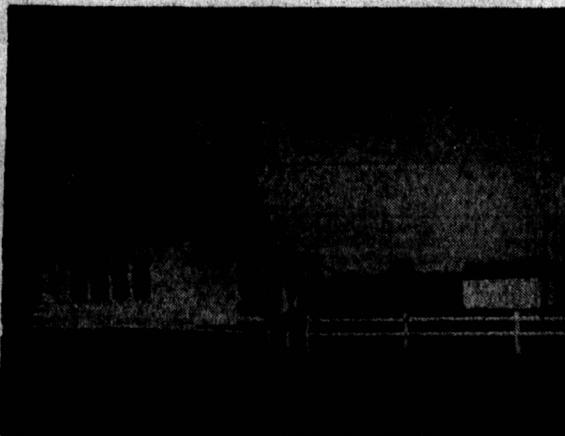
A Pamphlet entitled "BEAUTIFYING THE HOME GROUNDS", which proved quite popular last year will be made available to contestants this year.

—Also a list of Shrubs, Trees and Flowers suited to P. E. I. and prepared by the Dominion Experimental Farm, Charlottetown, will be mailed to contestants.

—In addition to above a list of available publications on Rural Beautification will be mailed on request.

SCHOOL IMPROVEMENT SCORING BASIS

1. EXTERIOR REPAIRS 75 points
2. EXTERIOR PAINTING 100 points
3. PLANTING and Care of Trees and Hedges 50 points
4. PLAYGROUNDS—including levelling, seeding and provision of adequate space 100 points
5. SANITATION (outbuildings only) 75 points
6. FENCES 50 points
7. SCHOOL SIGN BOARDS 25 points
8. FLAG POLE and FLAG 25 points
- Total 500 points



Greenfield School winner of R. T. Holman Ltd. Trophy for school improvement in King's County.

Photos by Garabun Photo Studio and Meyers Studio



After 1949 Competition

HOME IMPROVEMENT

SCORING BASIS

1. REPAIRS TO, or REPLACEMENT of buildings, painting and white-washing ... 90 points
2. PLANTING Trees, Hedges and Shrubs, etc. 75 points
3. REMOVAL of irreparable buildings, dead trees, weeds and rubbish 50 points
4. TIDINESS 50 points
5. FENCES around buildings 25 points
6. LAWNS 25 points
7. FLOWERS 50 points
8. GENERAL IMPROVEMENT in appearance 60 points
9. IMPROVEMENT in approach to Home, including improvement to gateways, care of mailbox, provision of signpost, fences along lane leading to Home 50 points
10. GENERAL IMPROVEMENT in farm frontage on main road, including planting trees, removal of weeds and rubbish, backsloping and care of fences 25 points
- Total 500 points

SPECIAL PRIZES

HOME IMPROVEMENT 1950

1. WINNER HOME IMPROVEMENT COMPETITION — King's Co.—Silver Cup donated by the late Senator J. A. MacDonald, Cardigan.
2. WINNER OF HOME COMPETITION—Queen's Co.—Silver Cup donated by Lt.-Col. E. W. Johnstone, Kensington.
3. WINNER OF HOME COMPETITION — Prince Co. — Silver Cup, donated by the Chief Justice Hon. Thane A. Campbell, Summerside.
4. MOST IMPROVEMENT AMONG HOMES ENTERED IN PROVINCE—Silver Cup donated by His Honour Lt.-Governor J. A. Bernard.
5. P. E. I. TRAVEL BUREAU PRIZE—BUILDINGS—For outstanding improvements in painting and repair of buildings in each County. A useful and valuable trophy will be awarded to each County winner.
6. FLOWER GARDEN PRIZE: A Special Collection Dahlias (18 varieties) is offered by the Dominion Experimental Farm, Charlottetown, to the BEST FLOWER GARDEN among contestants in each COUNTY. (One collection per county).
7. R. L. COTTON PRIZES: Mr. R. L. Cotton, Charlottetown, offers special prizes to the Farm residents in each County showing the greatest care, including trees and shrubbery development of his frontage on the main road.—Prizes for each County.
1st \$15
2nd \$7.50
Special additional prize for BEST IN PROVINCE \$10.

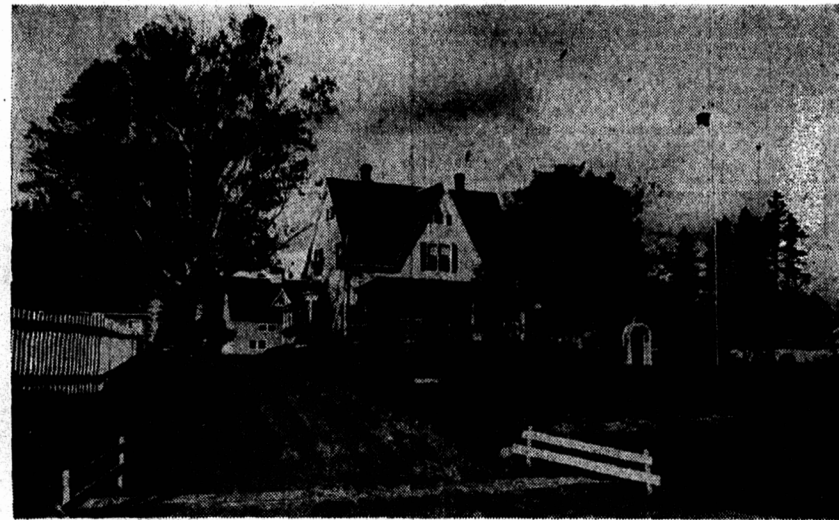
NOTE: For the purposes of this prize any rural farm property is eligible whether entered in other competitions or not—but to be considered for this prize the secretary of the Society or County Judge must be notified by those interested.

8. PATTERSON'S JEWELLERY STORE RESIDENCE PRIZE—offered by Patterson's Jewellery of Charlottetown to the contestant of Queen's Co. showing the greatest improvement to his residence only.
Prize: Half Dozen Silver Spoons.

9. OUTSTANDING HOME PRIZES: Special Trophies are offered to the contestant in each County who has the most outstanding Home (including all buildings) at the time of final judging—
King's Co.: To be announced.
Queen's Co.: Trophy donated by Mr. P. W. Turner, Ch'town.
Prince Co.: Trophy donated by Mr. Geo. Brookins, Kensington.

10. COMMUNITY PRIZES: To the community effecting the greatest improvement in the appearance of hall, school, church, cemetery, homes, and other physical features, cash prizes are offered for the best showing in each County. Entry for this competition must be in the name of some community group such as the Women's Institute, Junior Farmers, etc.
Prince Co.: Prize of \$50.00 donated by Mr. Lorne MacFarlane, Summerside.
Queen's Co.: Prize of \$50.00 donated by the Pure Milk Co. Ltd., Charlottetown.
King's Co.: To be announced.

11. SPECIAL CONTRIBUTIONS — PHOTOGRAPHIC SERVICES: The following Studios have agreed to Photograph the prize-winners in each County:—
King's—Garnum Photo Studio, Charlottetown.
Queen's—Burke's Photo Studio.
Prince—Meyers' Studio, Charlottetown.



Home of Mr. Willard Prowse, Brackley, winner of Gov. Bernard Trophy for greatest improvement in Province in 1949.

— PRIZE LISTS —

HOME IMPROVEMENT COMPETITIONS

KING'S COUNTY	QUEEN'S COUNTY	PRINCE COUNTY
1st Prize \$75	SAME AS FOR KING'S CO.	SAME AS FOR KING'S CO.
2nd Prize \$60		
3rd Prize \$40		
4th - 6th Prize \$25 ea.		
7th - 9th Prize \$15 ea.		
10th - 14th Prize \$10 ea.		

SCHOOL IMPROVEMENT COMPETITIONS

KING'S CO.: MOST IMPROVEMENT in Schools entered in King's Co. R. T. HOLMAN TROPHY

QUEEN'S CO.: MOST IMPROVEMENT in Schools entered in Queen's Co. R. T. HOLMAN TROPHY

PRINCE CO.: MOST IMPROVEMENT in Schools entered in Prince Co. R. T. HOLMAN TROPHY

Additional prizes to the value of \$50.00 each are offered to the schools winning the County and Provincial competitions. Prizes will consist of choice of school radio, books or planting materials.

ENTRY FORM

RURAL BEAUTIFICATION COMPETITIONS 1950

IMPORTANT — ALL BLANKS MUST BE COMPLETED

1. Name of Contestant (School or Community)
2. Address
3. School District
4. County
5. If School or Community, name sponsoring body, i.e., Women's Institute, Trustees, Community Club, etc.
6. If School or Community, name Secretary sponsoring Group
7. Eligible for Special Prizes Numbers
(Use numbers of Special Prizes listed in this Advertisement)
8. Fee enclosed 50 cents (Yes or No)

Cut out this entry form — COMPLETE FULLY and mail to:—

RURAL BEAUTIFICATION SOCIETY,
c/o P. E. I. Libraries,
Charlottetown

ENTRIES CLOSE MAY 1st—MAIL YOUR ENTRY NOW