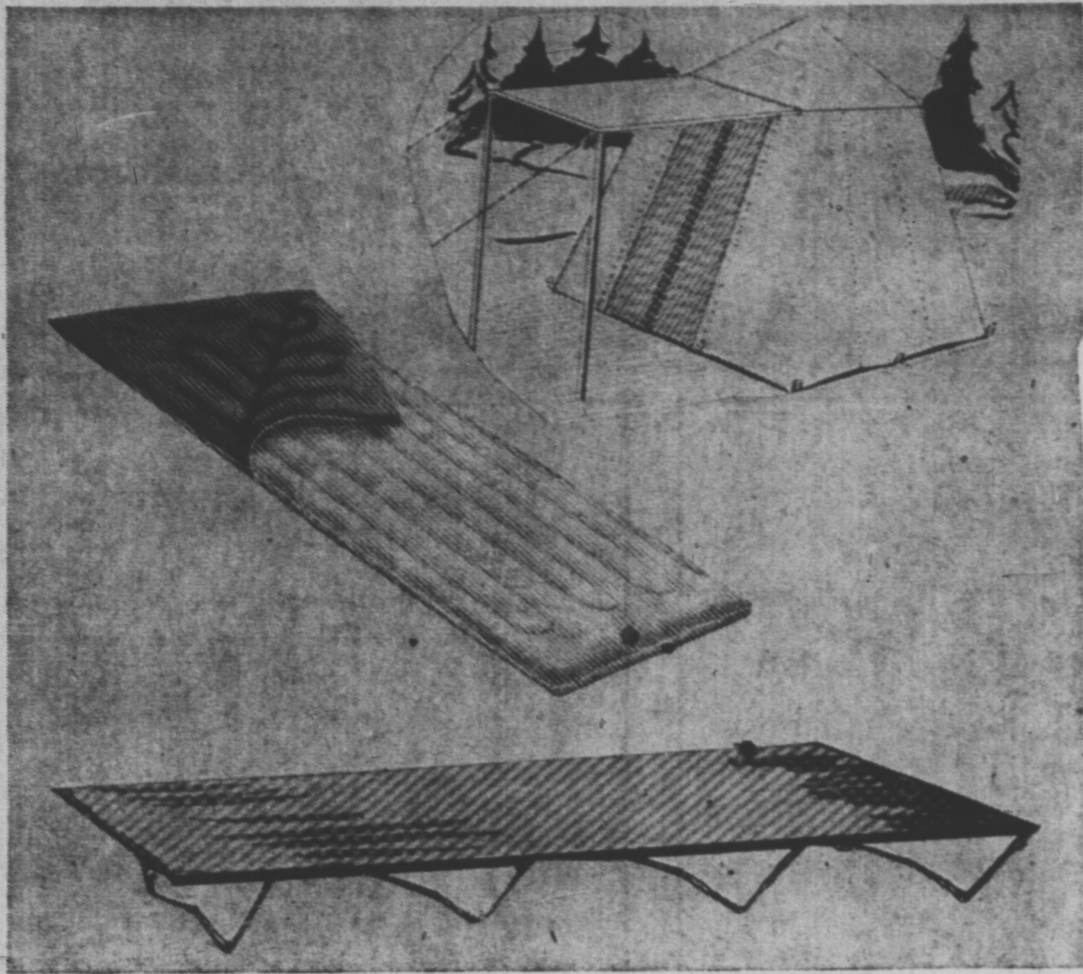


# Vacation for 2... \$1.50 weekly



## group one . . . camper's basic needs

1... 9' x 9' x 7 1/2' tourist tent . . . . . 38.95

Made from heavyweight tent drill, sewn-in duck floor to keep out insects, sewn-in screen front door with full length zipper. Screen window at back with roll up flap to keep out rain. This versatile tent comes complete with aluminum eaves, rods and center pole, wood pegs. Choice of colors, Sky Blue or Buff.

2 sleeping bags (9.95 ea.) . . . . . 19.90

A high quality sleeping bag faced with 100% water repellent nylon for extra hard wear. Full zipper side and bottom so that two can be zippered together if convenient. Waterproof rubberized bottom makes using ground sheet unnecessary. This sleeping bag is comparable to models selling at a much higher price.

2 camp cots (6.98 ea.) . . . . . 13.96

"Safari" camp cot, very strongly constructed and extra comfortable. Completely collapsible metal frame and heavy canvas cover. Extra heavy stitching ensures years of good service. Folds up for complete storage.

no down payment

this group all for

only  
**67.99**  
1.50 weekly

total....72.81

no down payment

## group two . . . for extra camping convenience

group one as above . . . . . 72.81

1 coleman camp stove . . . . . 21.95

The name "Coleman" ensures you of complete satisfaction. This handy stove has two burners, adjustable windbaffle, easy to clean, easy to light. Instant heat control, completely portable. This handy stove is a must for every camper.

1 coleman lantern . . . . . 15.95

Coleman "Sport-Lite" gasoline lantern will flood light a 100 ft. area. Completely weatherproof. Burns brightly in any kind of weather. Built in heat control. Lights instantly and has fuel capacity for approximately eight to ten hours.

this group all for

only  
**99.99**  
2.00 weekly

total....110.71

vote  
for your favorite  
June bride  
all during June  
fabulous gifts for  
6 lucky brides

your boy or girl  
has worked hard  
and passed....

he has not let you down . . . . .  
show your appreciation

give him a new

**C.C.M. bike**

**\$1.00 down**

balance in easy monthly payments

**39.95**

ladies' models  
blue

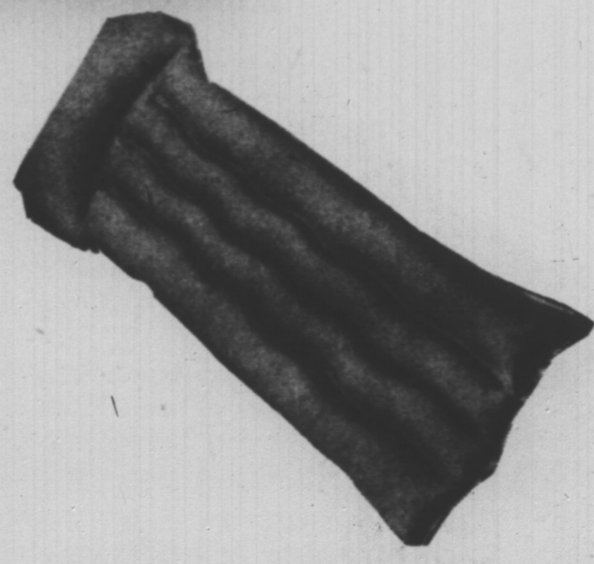
gent's models  
red



Your boy or girl will be proud to own a bike, and prouder still if it's a famous C.C.M. bike . . . with all the finest features for which C.C.M. is famous. Sturdy construction, easy availability of parts, Perry coaster brakes and guaranteed long wear. Brightly finished in lustrous enamel with chrome trim. Available in standard, juvenile and junior sizes for boys and girls.

## "sea-esta" air beds

World famous, imported from Scotland, these air beds are made from heavy quality rubber impregnated fabric for hard wear. Pillow and mattress inflates individually for most comfortable pressure.



double size 78 x 60

**18.95**

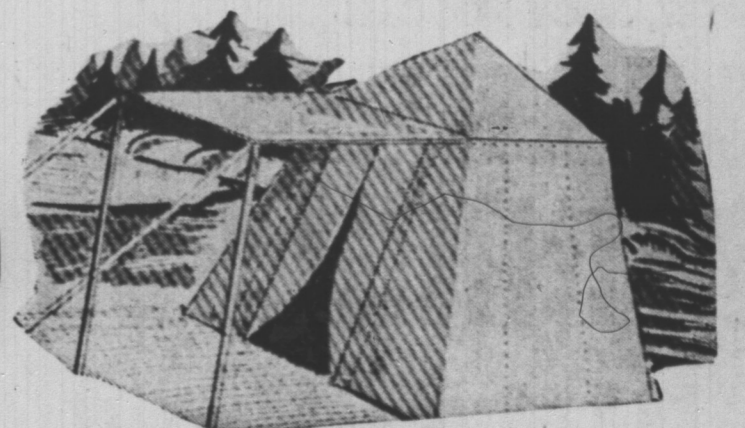
single size 72 x 30

**7.75**

## cabin tourist tent

The most popular type of tourist tent. Made with special waterproof tent drill. The floor is sewn in waterproof duck. Full zippered Dutch type floor with storm flap. Complete with tubular steel eave rods and poles, wood pegs. Choice of colors, Blue or Buff.

**62.50**



## ground sheet



Finest quality cold weather plastic gives added protection while sleeping on ground. Absolutely moisture proof. Size approximately 36 x 72. Complete your camping equipment with one of these excellent ground sheets.

**1.98**