

First Aid For The Ailing House

By ROGER C. WHITMAN
GREASE ON WALLPAPER
 QUESTION: During the holidays we had several big family get-togethers and the usual wining and dining, with carving done at the table. I thought I got all the gravy and grease

spatters off the wallpaper immediately. But apparently I treated into the paper. How can these be removed? It's not a washable paper.
 ANSWER: Cover the grease with a thick layer of a

soft paste made of powdered chalk and a liquid nonflammable spot remover. Allow the paste to remain until dry, then remove with a soft brush. Repeat treatment if necessary. If the paper is old and soiled, clean the area around the stains with a wallpaper cleaner, otherwise the paste may leave a cleaned place surrounded by a soiled ring.

SOOT IN BURNER

QUESTION: In inspecting our oil burner, I noticed that black soot is accumulating in the combustion chamber. We've had no trouble with the heat in the house. Does the soot indicate anything wrong?

ANSWER: This usually indicates that the mixture of oil and fuel is out of adjustment. Better call your service man.

PLASTERING BRICK WALL

QUESTION: I would like to plaster a brick wall in the basement that is crumbling. What should I wash it down with before plastering? Is there anything else I should do first?

ANSWER: Plaster should not be put directly on masonry, because it acquires the cooler masonry temperature, causing condensation to form. The resulting dampness will result in the plaster cracking and eventually falling off. Either use a masonry paint or build a false wall, on one-inch furring strips, or panelling (moisture-resistant plasterboard, plywood, etc.), which provides an insulating dead air space.

CANING FOR CHAIRS

QUESTION: I have three chairs with caned seats. I would like to recane these. Where can I get information and supplies?

ANSWER: Many large department stores have craft and hobby departments stocking caning supplies and how-to-do-it books. Or your local association for the blind may be able to give you helpful information.

REVARNISHED FLOOR

QUESTION: I revarnished an upstairs bedroom floor. But the new varnish started to lift and peel off in about a week. How can this be remedied?

ANSWER: The floor surface may not have been absolutely clean or thoroughly dry when the new varnish coat was applied, or the old finish may have been too glossy. Any of these conditions would prevent the new coating from adhering tightly. I recommend scraping the present finish off with a floor sanding machine. Wipe off all dust thoroughly and revarnish.

PAINT ON TILE

QUESTION: We have plastic tile on the lower half of our kitchen walls. I repainted the upper half, and didn't notice several spatters of paint I got on the tile until it had hardened. How can I remove these without damage to the plastic tile?

ANSWER: Paint can be removed from plastic tile with a solution of one part pure turpentine (be sure not to use a turpentine substitute which would injure the tile), and three parts rubbing alcohol. If the tile finish is dulled, polish with a thick paste made of powdered chalk

and water; then wipe with a dry, clean cloth.

DULLING BRASS FINISH

QUESTION: Is there any way to dull a brass finish? I have a lamp, given me as a gift, that is too shiny and doesn't look well with my furnishings.

ANSWER: A dulling spray is used by TV studios to cut glare on metal props. This is available in aerosol form in large art stores. Or rub the surface lightly with modelling clay to achieve a dull finish. Time will automatically take care of the dulling, if you don't apply a polish to the brass and have patience.

INK ON UPHOLSTERY

QUESTION: Is there anything that will remove ballpoint ink from heavy plastic upholstery, (similar to the type used in automobiles)?

ANSWER: A desk top cleaner, available at dealers in office furniture and supplies, which will remove stubborn stains from any surface not harmed by water alone. Or try applying rubbing alcohol to the marks, then rinsing with clear water.

FURNITURE SCRATCHES

QUESTION: I have a problem with my oak floors. I have no runs but every time I move my furniture around, it scratches the floor. Is there anything I can put under the legs that will

prevent the floors from getting so badly scratched? Don't want to cover the floors with carpet.

ANSWER: At variety, hardware and hardware stores, (even some large supermarkets) you will find plastic glides and rubber or plastic cups in an assortment of colors and sizes to fit most furniture legs. These are much easier on the hard floor surfaces and reduce scratching considerably.

QUESTION: We removed the paint from the wooden floor in our living room with a floor sander which we rented. Now we find the floor surface is gouged. How can this be remedied?

ANSWER: Apparently, only one grade or sandpaper (a very coarse one) was used with the sanding machine. For good results, at least three sandings using different grades of sandpaper are necessary. Rough sandpaper (about No. 2) is used to remove the paint and level off surface irregularities. And then a number one or "00" is used, followed by a final buffing with "00" or even "000" sandpaper. If the floor remains unfinished because of the gouging, fill these with plastic wood, then refinish as desired. If you have refinished the floor, you'll have to re-do the present job. There is no other way to smooth out such scratches or dents.

WHAT'S IN A HOUSE

Plumbing, Electrical Wiring And Garages

Plumbing is installed in two separate stages—rough plumbing and finish plumbing. Rough plumbing includes the installation of both cold and hot water and drainage pipes and their connection to municipal services. Finish plumbing—or the installation of fixtures—takes place at a later date.

PLUMBING

A good plumbing system calls for proper planning right from the start. Make sure there will be easy access to the connections of each fixture. In case of repairs or renovations, the plumber should be able to get at these points without having to tear out a part of a wall or a section of the floor.

Water pipes should not be installed in an outside wall in areas where winters are severe unless they are properly insulated and protected from freezing. Pipes leading to an outside tap should have a shut-off valve inside the house to prevent freezing in winter.

A supply to a water closet shall be provided with a shut-off valve. Also, allow for an adequate hot water tank in your plumbing plans. Setting the tank thermostat too high to make up for lack of storage shortens the life of the tank.

The publication "Residential Standards" contains tables of minimum and recommended capacities for hot water tanks, depending on number of bedrooms and other factors—it is much better to have a tank larger than the minimum size shown in these tables.

ELECTRICAL SYSTEM (1)
 Electricity is the housewife's most obliging and versatile helper because it does so many tasks in a modern home.

Plans for the electrical system should be complete from the outset. For instance, sufficient electrical outlets should be provided in every part of the house to take care not only of present needs but also of future requirements.

Each year electricity is called upon to do more jobs. Ten years from now it will undoubtedly have still further uses. There is therefore a definite need for planning the electrical system wisely.

The main consideration in the planning stage is that every room or area in the house requiring electrical service is adequately equipped with the proper capacity carrying wires, outlets, fixtures and switches.

You have to remember the exterior too: front and back doors and attached garages will need electrical equipment. Extra outlets and switches can be provided at very little additional cost when they are included in the building contract.

The main item to be considered is the service capacity provided for the whole house, which should be 100 amperes to be able to supply enough electrical power for all lighting needs, receptacles, furnace, water heater, dryer, stove, hot water tank and other, smaller appliances without overloading the system.

If the house is heated electrically, the service capacity must be increased over 100 amperes.

ELECTRICAL SYSTEM (2)
 The prospective home owner should keep in mind that a single ceiling fixture will not give sufficient light for the basement stairway, furnace and laundry areas and storage space.

Every basement has its own lighting problems, but as a general rule, there should be an electrical fixture for every 300 square feet of basement floor area.

Bedrooms are required to have one lighting outlet, either in the ceiling or a wall receptacle, controlled by a wall-switch. There must be enough receptacles to ensure that no point along the usable floor line is more than six feet from an outlet.

Kitchens must have at least one receptacle for appliances, at the counter top height. Laundry areas or rooms must also be provided with an appliance receptacle.

An exterior light should be provided at every entrance to the house.

GARAGES AND CARPORTS

The garage or carport should be at least 20 feet long and 10 feet wide on the inside. It a

2 The Guardian,
 Sat., May 29, 1965.

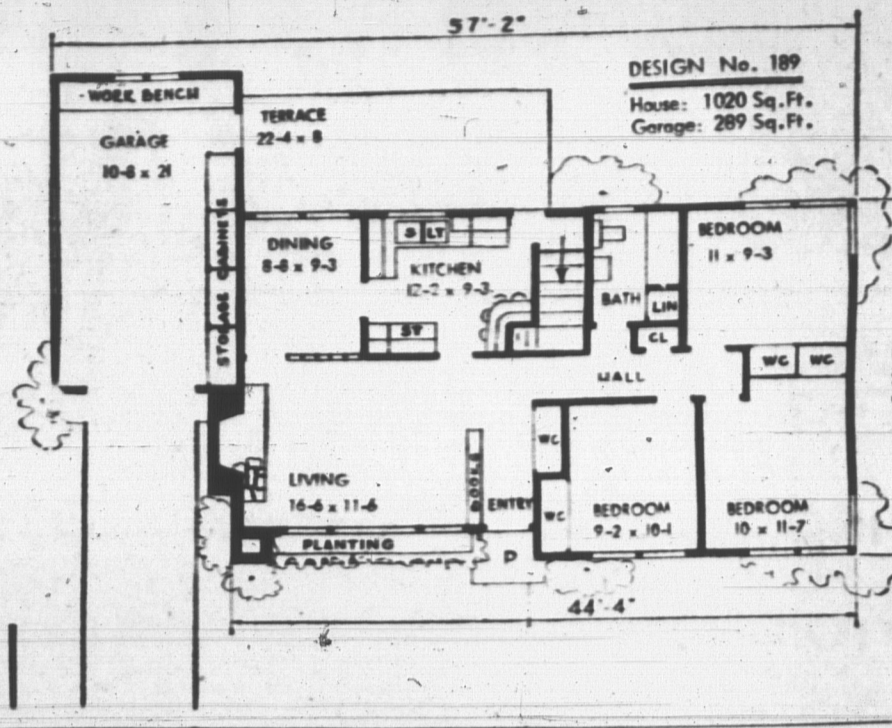
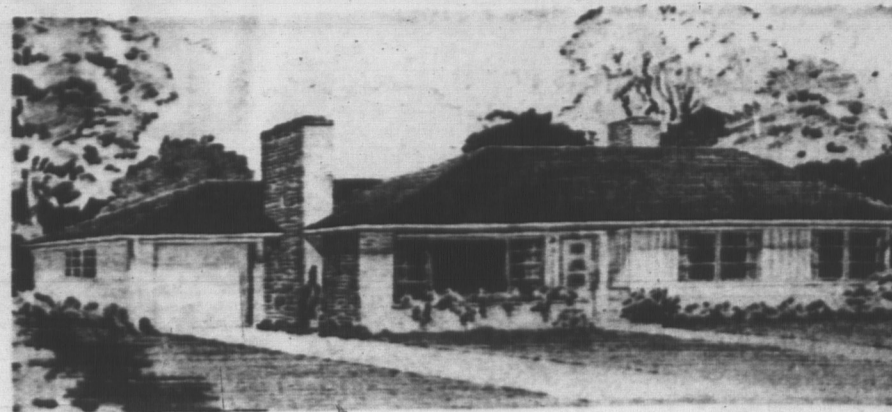
steep, and if the driveway must be sloped it is preferable to have it run up from the street. This makes it easier to approach the street and also provides for normal surface drainage.

HOW TO OBTAIN DESIGN BOOK

The latest design book entitled "Canadian Guide to Home Planning and Design" is now available at the offices of The Guardian and The Evening Patriot for \$1, tax free. This new edition includes information on financing in detail, landscaping, color selection etc., plus over 10 popular new designs to choose from. Also included are full details on how to order blueprints.

Beauty and efficiency are combined in this attractive home to make it one of our most popular designs. The floor plan includes a spacious living room with fireplace, large built-in book shelves, and a nice dining room with access to the veranda. Of particular interest to the housewife is the large combined kitchen with snack bar and convenient access to all areas of the house. Construction as shown is brick veneer with wood accent but blueprints include complete construction details for building in all brick or all frame.

GUARDIAN-PATRIOT HOME OF THE WEEK



Mr. Farmer:



We'd like to serve you!

We Are Texaco Farm Distributors

For:

- GASOLINE
- DIESEL FUEL
- OILS
- GREASES
- STOVE & FURNACE OILS

SCHURMAN Supply Ltd.

KENSINGTON

Broadway — Dial 267-3130

Phone us for details, or drop in—you'll benefit!



SCHURMAN



EVERYTHING FOR YOUR GARDEN

- | | | |
|-------------------------|-----------|-----------------|
| • VEGETABLE SEEDS | • RAKES | • WHEEL-BARROWS |
| • FLOWER SEEDS | • SPADES | • SEEDERS |
| • LAWN SEEDS | • FORKS | • ROLLERS |
| • SURE-GAIN FERTILIZERS | • HOES | • HOSE |
| • PRIMA FERTILIZERS | • SHEARS | • SPRINKLERS |
| • BONE MEAL | • PRUNERS | • GARDEN FENCE |
| • PEAT MOSS | • EDGERS | • SPRAYERS |
| • ETC. | • ETC. | • ETC. |

SCHURMAN Supply Ltd.

KENSINGTON SUMMERSIDE CHARLOTTETOWN

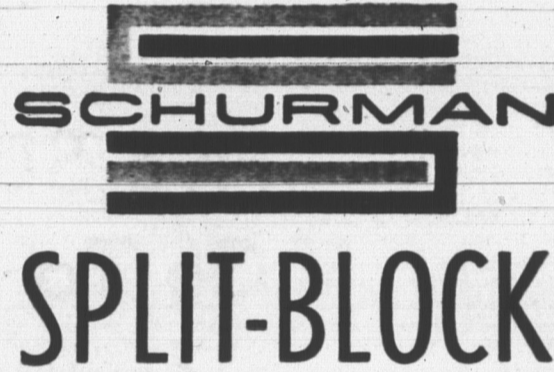
Broadway
 Dial 267-3130

Eustane St.
 Dial 436-2265

112 Longworth Ave.
 Dial 894-7315

Another New Product Manufactured

By



Rugged. Rich in texture. Handsome as handsome can be. You'll find them all in this most attractive building material, along with the complete fire-safety, sound-absorption. And split block is self-insulated; also requires little maintenance over the years. Why build with a lesser material than split block? Drop in and see us for facts, features and money-saving figures on split block construction.

5 Different Colors On Hand... Other Colors On Request

Exterior Elegance

If you have not yet become acquainted with adventuresome split block architecture, here's an excellent place to start. Split block is truly in a class by itself. Delightful texture characteristics are its trademark, as exemplified by this picture. With its beautifully weathered appearance, split block becomes a natural building material for home, commercial building, church and school exteriors. Give split block a try and see how gracefully it welcomes the most demanding designs. You'll be happy you did.

Interior Elegance

Anyway you stack it, split block will give you higher fashion at lower cost. Here's the masonry wall material with personality that can't be beat. Split block is self-styled for sophistication, self-insulated for savings, and self sound-absorbing for silence. Some way to build, huh? And you get even more in luxurious livability because it is self-supporting when it comes to maintenance. Little care or upkeep is required. There is never a need for expensive wall coverings which often lose their appeal with the passing of time. Age only adds to the beauty of split block.

READY-MIXED CONCRETE

When you think of Concrete think of Schurman's

- Our GRAVEL is all crushed, screened and washed
- Our SAND is screened and graded
- Each mix is DESIGNED scientifically
- Aggregates are WEIGHED on Government Tested scales.
- Tested in our own laboratories and the final production TESTED by an independent laboratory for your protection.
- For these services—YOU PAY NO MORE—than for ordinary concrete.
- DON'T GUESS — DON'T GAMBLE

D RIPSTONES

that prevents washing away lawns and flower beds. Concrete with a HARD SMOOTH finish.

When you think of concrete blocks think of Schurman's

- Our PLANT is the most modern on the Island—
- AGGREGATES Scientifically designed and accurately weighed
- MOISTURE electronically controlled
- VIBRATION automatically timed
- CURING in modern steam kilns
- You are assured BETTER BLOCK when you buy Schurman's
- Sharp true corners
- Two cores for easier handling
- Fine even texture
- Superior strength backed by laboratory testing

Precast Concrete Sidewalk

and Stepping Stones

TO MAKE THAT WALK YOU NEED

Easy To Install — Inexpensive — Permanent

Many other designs and sizes of concrete specialties available from stock.

M.F. SCHURMAN CO. LTD.

Kensington
 Broadway
 Dial 267-3130

Summerside
 Eustane St.
 Dial 436-2265

Charlottetown
 Dial 894-7315
 Park Street