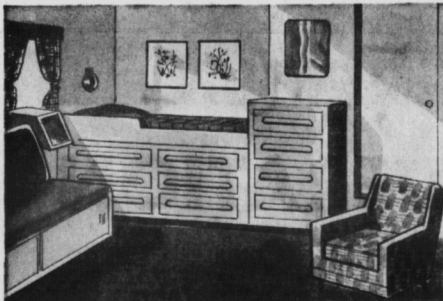


## HALIFAX SHIPYARDS TURNS OVER

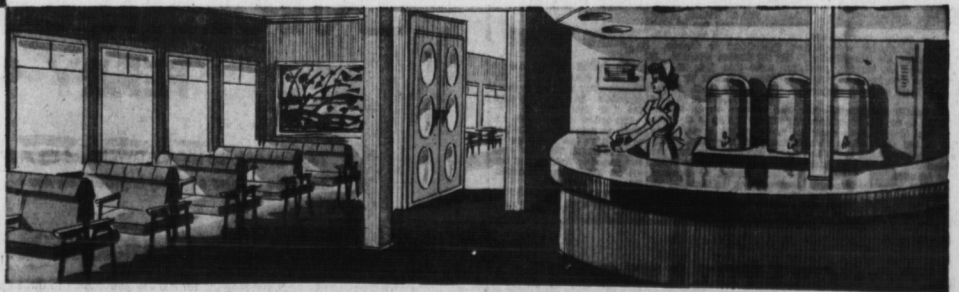
# CONFEDERATION" TO CN



View of Captain's Cabin—an example of the "Artistry in Wood" hand-crafted by woodworkers of our Joiner Shop.

Sketch of Coffee Bar and Passenger Lounge aft (looking forward and to port) but typical of Centre and Forward Lounges. Comfortable, convenient and restful, furnished in a pleasant and colorful decor.

April 24th will mark yet another link in the transportation chain between the agriculture rich "Garden of the Gulf" Province of Prince Edward Island and the rest of Canada. The 279' length, 2,500 ton, ice-breaking ferry "Confederation" will run from Borden, P.E.I., to Tormentine, N.B. with a capacity of 300 passengers, 68 cars and a deck capacity of 15 axle tons. Built by Halifax Shipyards, the twin engined 2,600 developed horse-power ferry traveling up to 31 knots, is unique with its double bow enabling it to fit present docking facilities at both Borden and Cape Tormentine. The \$3,000,000 ferry was constructed from Halifax Shipyards' own working drawings.



- 3 BUILDING BERTHS TO 15,000 TONS.
- GRAVING DOCK — 567' x 102'6" x 27' OVER KEEL BLOCKS.
- 6 MARINE RAILWAY DRY DOCKS — 100 to 3,000 TONS.
- FLOATING DRY DOCK — 600' x 96'3" x 31' OVER KEEL BLOCKS
- FLOATING CRANE—TO 80 LONG TONS.
- EXPERIENCED MEN IN EVERY SHOP.



# HALIFAX SHIPYARDS

HALIFAX • NOVA SCOTIA • CANADA