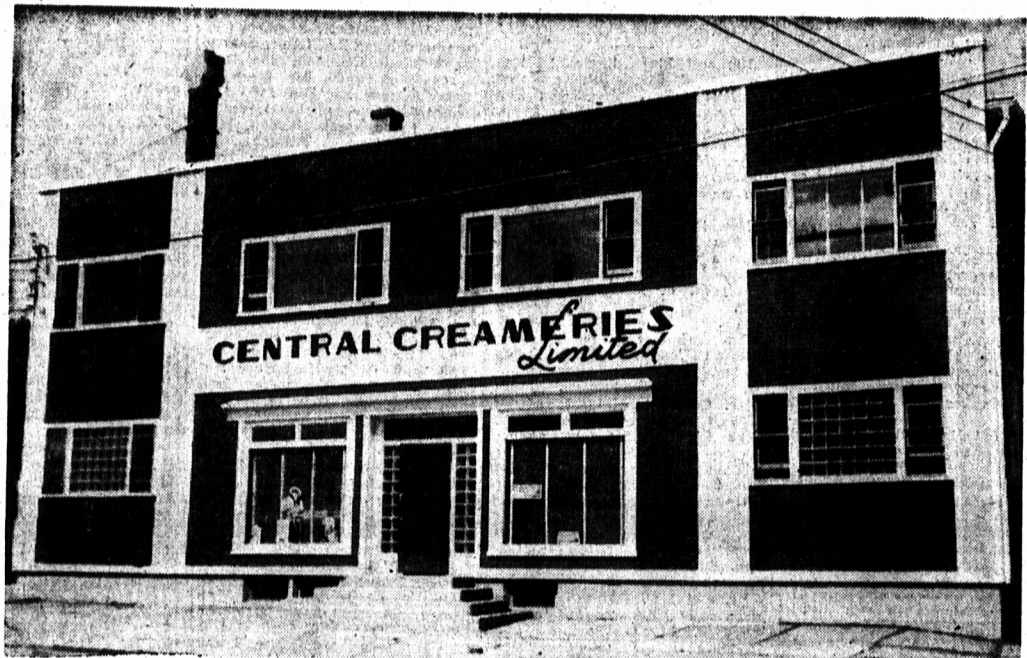
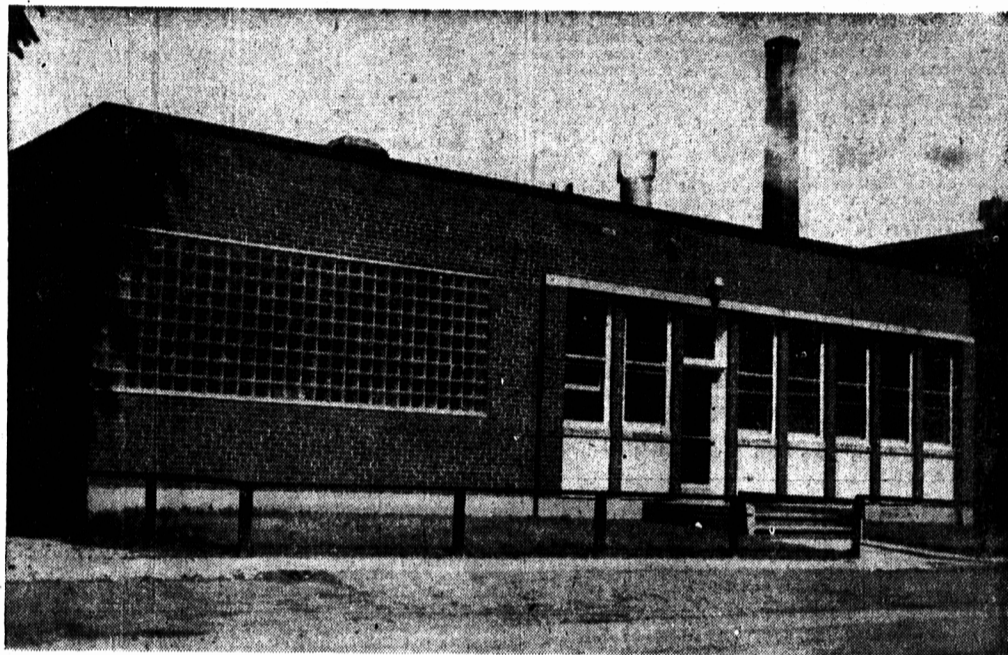


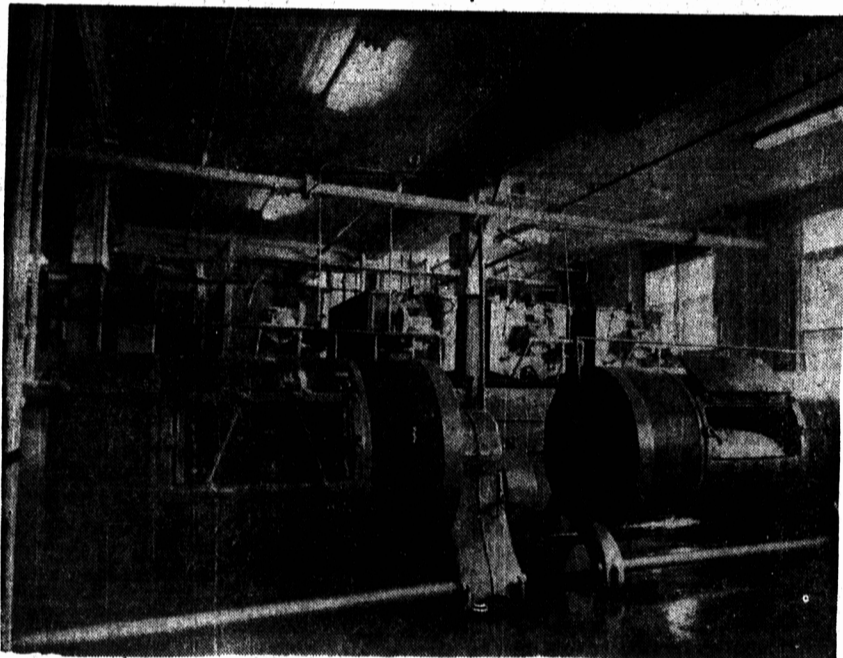
PROGRESS



The General Offices, and the Butter and Ice Cream Divisions



The newly opened Concentrated Milk Products Division, adjacent to the main plant



The Butter Manufacturing Department



THE LATE J. P. SIMMONDS, Founder



Research and Quality Control Laboratories under direction of Dr. J. O. Albert, M.S.A., B.Sc., Ph.D.



J. A. SIMMONDS, President



The Original Home of Perfection Dairy Products



F. M. SIMMONDS, Secretary-Treasurer

Thirty-two years of development of the dairy industry in this Province are depicted in the pictures which appear on this page. The buildings, equipment and offices of Central Creameries are as modern and progressive as any in Canada or the United States. It is the Island's greatest outlet for the product of Island dairy farmers.



Bufllovak Double Effect Milk Evaporators



The Ice-Cream Manufacturing Department