

**CASINO DROPS  
TOPLESS PLAN**

LAS VEGAS, Nev. (AP)—Semi-topless women blackjack dealers disappeared from a suburban Las Vegas casino where they made their debut four days ago.

The Nevada gaming commission said they'd have to go—or commissioners would close the casino.

They can't see where they're indecent or immoral. Officials checked several people—including older women—in the casino the night they started, and they could not find anybody who thought it was indecent or immoral.

The casino, the Silver Nugget, said it would file an answer to the commission ruling within five days. Such replies usually appeal the commission's decision.

The girls had worn bikini-like briefs and see-through chiffon tops with whippers of covering here and there.

**Legislation  
Introduced**

OTTAWA (CP)—Three new items of legislation and a proposal for a committee inquiry into employer-employee relations in the public service were introduced in the Commons Wednesday.

The government gave notice—increasing the capital of the Farm Credit Corp. to \$40,000,000 from \$24,000,000. This will enable the Crown corporation to boost its borrowing capacity to \$100,000,000 from \$60,000,000 and to lend more money to farmers.

—Giving legal effect to term 29 of the terms of union with Newfoundland. This will make clear that Newfoundland will continue to receive an \$8,000,000 special grant from Ottawa each year for an indefinite period.

—Integration of existing pension plans for retired federal employees, servicemen, RCMP personnel and diplomats with the Canada Pension Plan. Contributions paid by government employees will be reduced as a result.

Prime Minister Pearson gave notice of a resolution to set up a special Senate-Commons committee to hold public hearings on proposals for collective bargaining for the civil service.

The government earlier introduced legislation providing for a system of collective bargaining in the civil service.

**Housing Funds  
Reported Short**

OTTAWA (CP)—There is a nation-wide shortage of private funds for homes built under Central Mortgage and Housing Corp. Labor Minister Nicholson told the Commons Wednesday. The government was putting as much money into housing this year as it had in 1965. But private lenders were finding other investments more attractive, despite a recent increase in CMHC's lending rate.

George Chatterton (PC—Esquimaux-Sanich) asked whether more government money would be put into housing if the situation continued.

Mr. Nicholson said this is a matter of government policy.

**NET EARNINGS**

By THE CANADIAN PRESS

Cariboo Gold Quartz Mining Co. Ltd., year ended Dec. 31: 1965, \$36,205; 1964, \$47,565.

Atlantic Coast Copper Corp. Ltd., year ended Dec. 31: 1965, \$43,369 (net loss); 1964, \$713,922 (net loss).

De Havilland Aircraft of Canada Ltd., year ended Dec. 31: 1965, \$1,649,218 (net loss); 1964, \$639,601.

Economic Investment Trust Ltd., three months ended March 31: 1966, \$177,762, 11 cents a share; 1965, \$179,644, 12 cents.

Acklands Ltd., three months ended Feb. 28: 1966, \$120,000, 22 cents a share; 1965, \$68,000, 12 cents.

Crown Zellerbach Canada Ltd., three months ended March 31: 1966, \$2,402,000; 1965, \$2,651,000.

Discovery Mines Ltd., three months ended March 31: 1966, \$228,147; 1965, \$181,400.

Chemcell (1963) Ltd., three months ended March 31: 1966, \$2,700,000, 19 cents a share; 1965, \$2,839,000, 20 cents.

International Nickel Co. of Canada Ltd., three months ended March 31: 1966, \$38,500,000; 1965, \$37,480,000.

Bowaters Mersey Paper Co. Ltd., year ended Dec. 31: 1965, \$1,822,000; 1964, \$2,082,732.

Dominion Lime Ltd., year ended Dec. 31: 1965, \$1,632,738 (net loss); 1964, \$289,871.

TransAlp Ltd., year ended Dec. 31: 1965, \$232,929, 36 cents a share; 1964, \$180,462, 38 cents.

**PLAN BROADCASTS**

LONDON (Reuters)—A new £3,000,000 (\$9,000,000) floating pirate radio station, backed by British and North American investors and transmitting two services called Radio England and British Radio, will start operating off the British east coast this month, it was announced Wednesday.

**PURITY DAIRY**

"Parents Prefer Purity Products"

317 Kent St. Dial 4-7125

**SHOP SAVE-EASY FOR A COMPLETE SELECTION OF  
HOUSECLEANING ITEMS AT SAVE-EASY LOW PRICES!**

POWER KING DETERGENT—LEVER  
**NEW SUNLIGHT KING SIZE 1.59**

SPIC AND SPAN  
**89<sup>C</sup>**  
GIANT SIZE

LIQUID DETERGENT  
**MAPLE LEAF 2 24 OZ. FOR 89c**

**BON-AMI JET . . . 65c**

Things have got to  
**SPARKLE**  
for MY Mom!



AND SPARKLE THEY DO AT,,

How right you are, Mister! We know your mother well. She wants her store sparkling and spotless. She wants her Fruits and Vegetables to have that "just picked" freshness! She wants "quality" Meats trimmed to perfection . . . plus friendly, courteous service. Fussy? Not at all! She only WANTS the things she GETS at SAVE.EASY.

VALUES EFFECTIVE  
TO CLOSING

Start your shopping list with these  
**SPARKLING VALUES!**

**COFFEE**

100% PURE  
SAVE-EASY  
INSTANT **79<sup>C</sup>**

**DRINKS**

ALLEN'S  
48 OZ.  
Assorted **3 TINS 89<sup>C</sup>**

**PEAS**

ROSEDALE  
15 OZ.  
TIN **7 TINS 1.00**

**BUTTER**

**2 LBS. FOR 1.27**

**MOLASSES**

Extra Fancy  
Silver Seal  
PER QT. **39<sup>C</sup> 89<sup>C</sup>**

SAVE EASY SUPER EASY BINGO  
**\$1,000.00 WINNER**  
**Douglas E. Bincent**

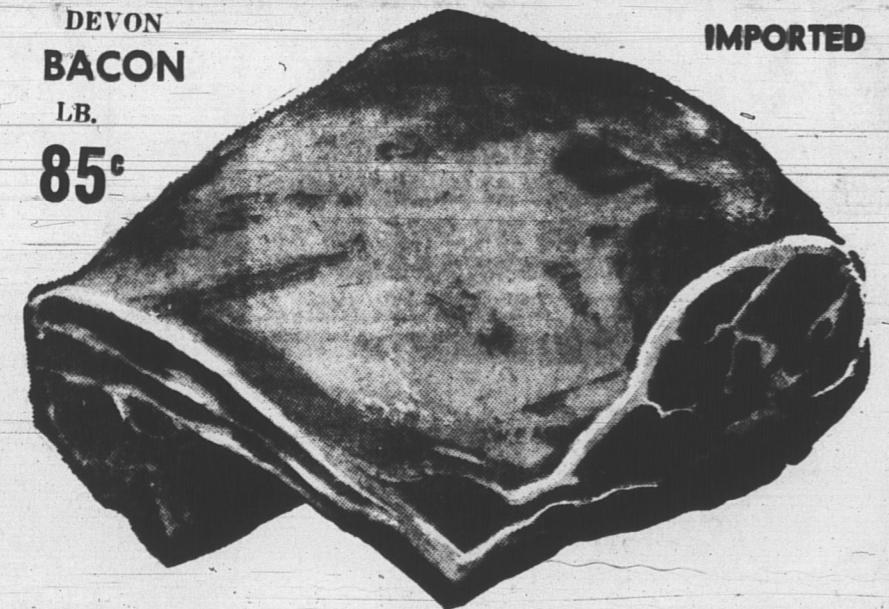
TULIP LUNCHEON  
**MEAT**  
2—12 OZ. TINS

**FROZEN FOOD SAVINGS**  
ARE IN SEASON..

VELVET  
ICE CREAM 3 PT. 59c

FROZO FRENCH  
FRIES 2 LBS. 43c

HIGHLINER WITH BATTER  
HADDOCK 14 OZ. 49c



DEVON  
**BACON**  
L.B.  
**85<sup>C</sup>**

IMPORTED

**LAMB FRONTS** LBS. **37<sup>C</sup>**

MAPLE LEAF  
SWEET PICKLED  
PICNIC **LB. 49<sup>C</sup>**

GREEN  
GABLES **2 LBS. 89<sup>C</sup>**  
WIENERS

HIGHLINER  
SMOKED  
FILLETS **LB. 49<sup>C</sup>**

**BEEF STEAKETTES** ALPINE PER LB. **59<sup>C</sup>**

MAPLE LEAF CAN—1 1/2 LBS.  
**PICNIC 1.39**

MAPLE LEAF CAN—1 1/2 LBS.  
**HAMS 1.69**

HEAD & SHOULDERS  
**SHAMPOO LARGE TUBE 1.17**

PURITAN MEAT  
**SPREAD 2 3 OZ. TINS 29c**

PERFECTION  
**MILK 6 TALL TIN 1.00**

DAVIDS ORANGE LEMON CO-NUT  
**PUFFS 3 FOR 85c**

NABISCO SHREDDED  
**WHEAT 18 OZ. PKGS. 35c**

DR. BALLARD'S  
**DOG FOOD 2 15 OZ. TINS 25c**

BICK'S SWEET MUSTARD OR SWEET MIXED  
**PICKLES 3 15 OZ. BTLS. \$1**



FIRM, GOLDEN  
**BANANAS**  
**5 Lbs. For \$1.00**

TEXAS  
**CARROTS 4 LBS. FOR 49c**

SPARKLE CELLO  
**TOMATOES PER PKG. 33c**

HOT HOUSE LARGE  
**CUKES 2 FOR 49c**

**Special Blend TEA**  
YOU BUY ONE LB.  
YOU GET 15 BOTH **79<sup>C</sup>**  
TEA BAGS FREE FOR

SUNNYVALE  
**PEACHES 28 OZ. TIN 43c**

FREE-O-SEED  
**RAISINS 3 16 OZ. PKGS. \$1**

CHERRY VALLEY  
**TOMATOES 28 OZ. TIN 31c**

HEINZ VEGETABLE OR TOMATO  
**SOUP 8 10 OZ. TINS \$1**

CHRISTIES  
**SODAS 3 1 LB. PKGS. \$1**

HABITANT—24 OZ. BOTTLE  
**CHOW CHOW . . . 43c**

**ENTER OUR**

**Graves** APPLE JUICE

**CONTEST**

APRIL 13 TO 30

Win a  
1966  
Volkswagen!

GRAVES  
**APPLE JUICE 2 48 OZ. TINS 69<sup>C</sup>**

**ELLIS BROS.**

**SAVE-EASY**

OPEN THURS.  
FRI. AND  
SAT. NIGHTS

**FREE  
PARKING**