

# HALLIDAY CRAFTSMEN LIMITED

## ANNOUNCE A

# NEW HOME DEALERSHIP ON P. E. ISLAND

# WILSON REAL ESTATE LTD.



### THE REGENT

(N.H.A. APPROVED)

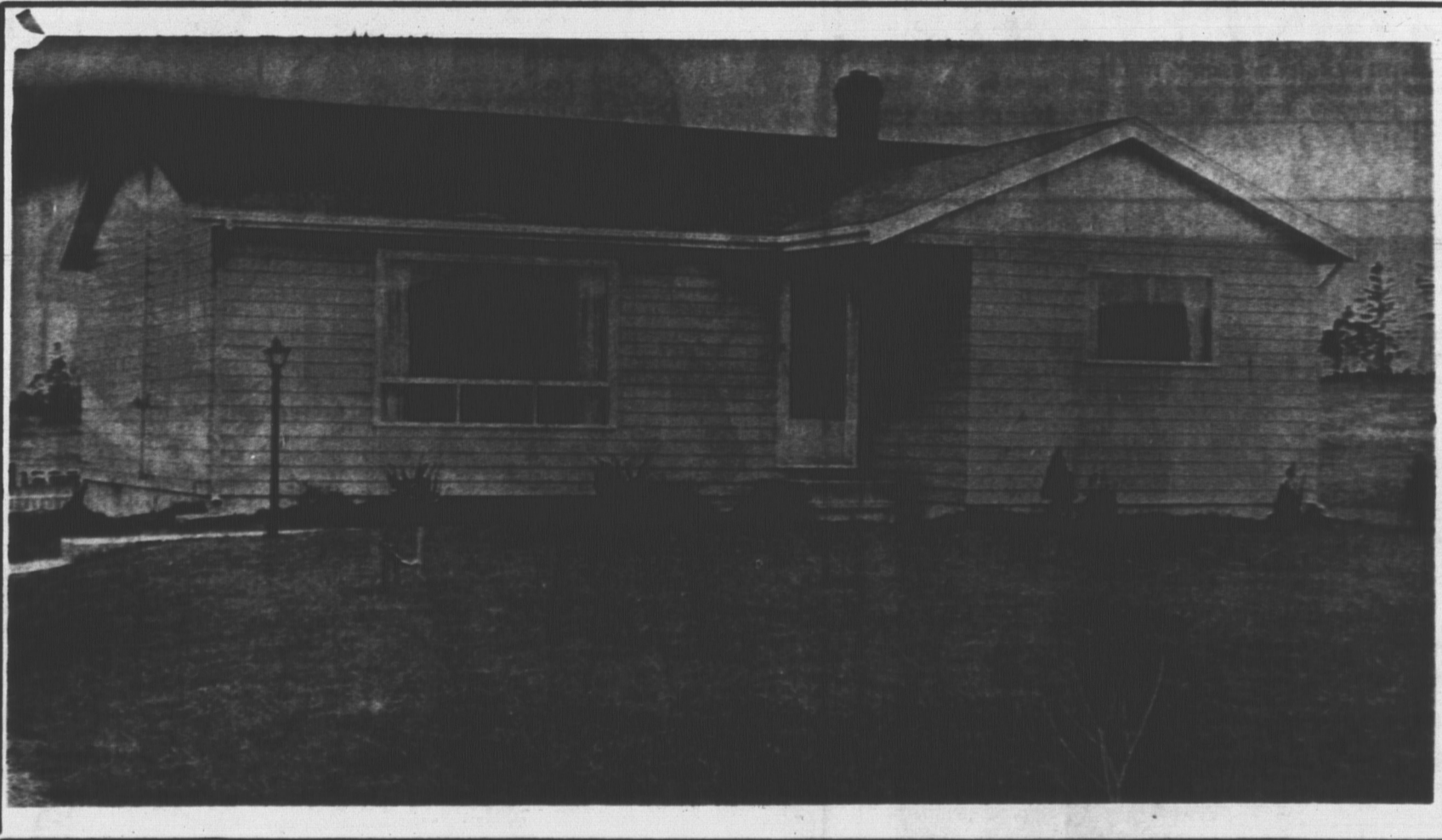
This handsome three bedroom house is designed for easy living with lots of space for the average Maritime Family.

Note that the living room is away from the general traffic area and the kitchen and dining area are one room which may be divided as you please.

Three larger than average bedrooms, each having ample closet space and large glass area provide sleeping accommodation for family of six.

The Bath is adjacent to all bed rooms and hall connecting to kitchen and living area.

Three floor plans provide choice of sizes for this exciting modern home.



### THE "CORNERBROOK"

(N.H.A. APPROVED)

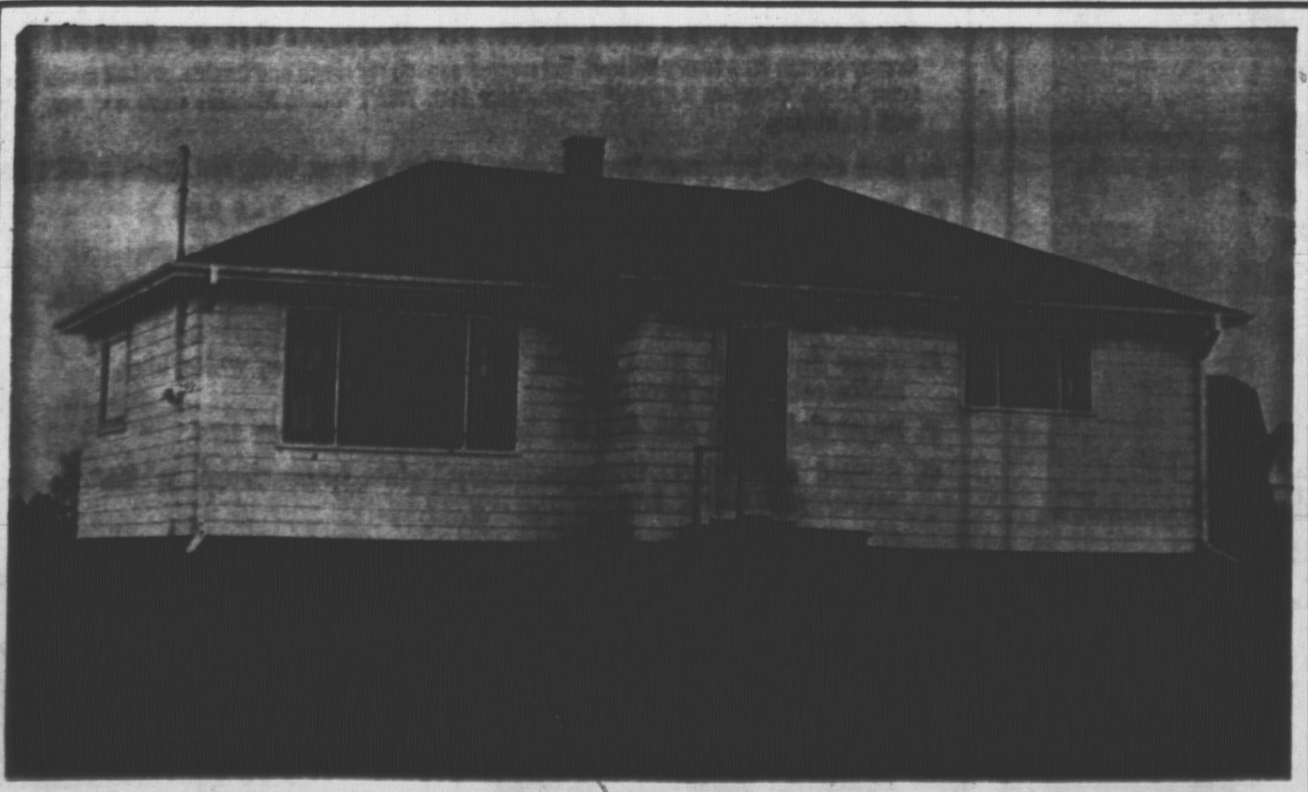
The Cornerbrook is one of our better values and in a very short time has become one of our most popular houses.

The three bedrooms, each with ample closet space are grouped along the right side.

The long hall permits access to every room from the front door or from the kitchen without disturbing another room.

The bath is centrally located and adjacent to kitchen and bedroom.

The living and dining areas are combined, as are the kitchen and dining area providing scope for imagination when decorating and arranging furniture, cabinets, etc.

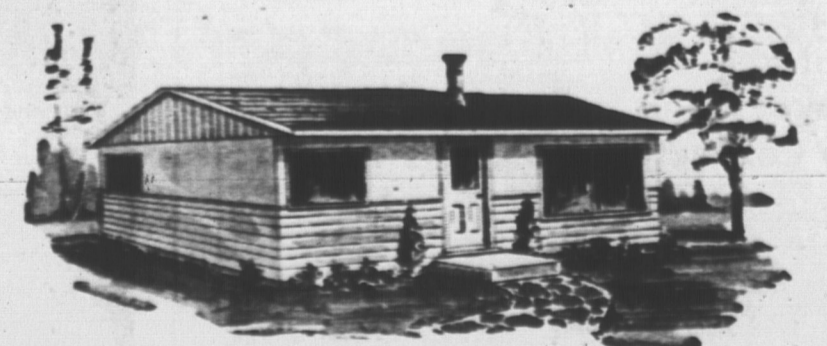


### THE MAITLAND

(NHA APPROVED)

The versatile Maitland, a low cost home with all the essentials a home should have, lends itself to some minor revisions which will give your home a custom look. Several floor plans are available, each having large living room, 3 bedrooms, bath, kitchen and dining area.

### SUMMER COTTAGES



#### The MINOR, The Major

The Minor comes complete in 20 easy to erect floor, wall, and partition built-up sections; 13 trussed roof rafters; plywood floor and roof; pierson windows; door; nails; and paint. Four men can have the cottage up and livable in 1 day. Two bedrooms, bath, and large kitchen, living and dining area make this an ample cottage for up to 6 people.

The Major is similar to the Minor; but with much larger living, kitchen areas. Flue is not included in price.

# JAMES WILSON REAL ESTATE LIMITED

90 KENT STREET, CHARLOTTETOWN

PHONE 892-2511