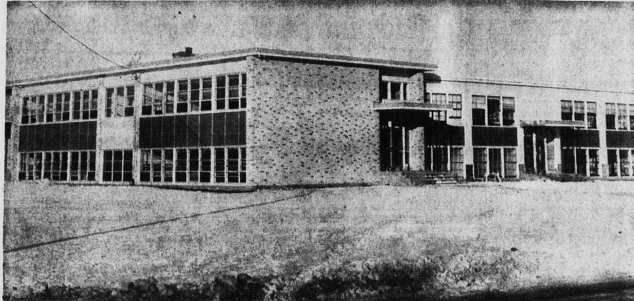
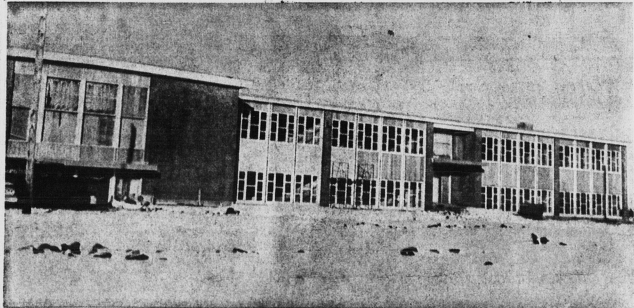




THIS IS THE NEW VOCATIONAL SCHOOL AT SUMMERSIDE



ST. ELEANORS HIGH SCHOOL WAS MUCH NEEDED ADDITION



MISCOUCHE REGIONAL HIGH SCHOOL NEARS COMPLETION

## High Schools Herald New Era In Education

A rapid increase in school population and the fact that more children are staying in school longer combined to force those concerned with education to get together and do something about it.

As a result, within the past few months, schools have been mushrooming all over the place, providing the needed classrooms and the finest facilities for both the urban and rural school pupils.

East Prince County has its share of these new schools, that are already or soon will be providing for the educational needs of the many school districts involved. With modern buses transporting the pupils to and from their well equipped and well staffed institutions of learning.

### NEARS COMPLETION

At Miscouche, a rural regional high school is nearing completion and it's expected this fine school will be ready for occupancy by early spring. When completed its facilities

will include eight academic classrooms, gym-auditorium, a library, a home-economics and classroom and other features that provide the very best equipment and atmosphere for these who wish to learn.

R.H. Rankin Ltd. is the contractor.

Kinkora regional high school, the other half of the Miscouche regional unit, is being constructed by the M.F. Schurman Co. Ltd., and officials expect the classrooms to be ready for occupancy by early February. The Kinkora unit has nine classrooms, a combination gym-auditorium, a library and a home-economics classroom.

### ADDITION BUILT

St. Eleanors recently added a six-classroom enlargement to their former three room school, and the result has been a beautiful, nine room school with generous facilities for the 200 pupils. This addition was constructed by Robert H. Rankin Ltd.

Kensington's new rural regional high school, located on



SUMMERSIDE RURAL REGIONAL HIGH SCHOOL

the Margate Road, is modern from both looks and facilities that it provides. Some of the classrooms are expected to be ready by the first of March and pupils will find their school has nine classrooms in all, plus two laboratories, two domestic science rooms, and audio-visual classroom, a gym-auditorium and a music room, among others. Williams and Murphy are doing this project.

All classrooms and shops at the Prince County Vocational School located at Summerside are now in use — 16 in all although two lab's are still to be completed. Also not finished are an auditorium-gym, a cafeteria, a library and the school office. Williams and Murphy Ltd. is also building this one.

The Summerside rural regional high school opened its doors to pupils the first of the year, but only eight of the 16 classrooms are completed as yet. This octagonal shaped school, the first in the province

with this unique architecture, will provide the same excellent facilities as the others and is being built by County The Ltd., a local firm.

These six schools will be the seats of learning for several thousand pupils each year and having been provided with facilities second to none. There is every reason to be certain that pupils in this province have an equal opportunity with those in other provinces, of acquiring a good high school education.



For A Comfortable Home Every Day of The Year

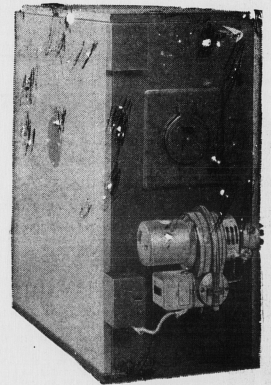
# JANUARY SALE DAYS

### FAWCETT FEATURES

Steel cabinet with aquamarine enamel finish. Completely insulated . . . no heat loss . . . quiet operation. Heavy duty steel inner body.

Dual radiators for maximum heat extraction. Cleanout doors on radiators. Torrid-Oil Burner . . . quiet, dependable, a fuel saver. 3 Standard Controls: Protectorelay, Thermostat, Fan limit.

3 Accessories: Tank Gauge, Draft Regulator, Oil Filter, Big, rubber-mounted blower for gentle circulation. Removable panel door for access to blower and filter. Automatic humidifier is optional.



### HOME OWNERS CHOSE FAWCETT

More and more home owners are specifying Fawcett heating units to replace outmoded, inefficient, money-wasting furnaces. Chief reasons why owners choose Fawcett units are proven reliability and economy of both purchase and operation. Thermostatically controlled Fawcett Winter Air-Conditioners provide balanced heating comfort any day of the year and filtered air circulation during hot summer weather.

LOW DOWN PAYMENT UP TO 5 YEARS TO PAY FOR 6 ROOM BUNGALOW

\$ **669** only

NOT INCLUDING WIRING

# MacCAUSLAND FURNITURE LIMITED

WATER STREET

SUMMERSIDE

Sheen and MacInnis

## GIGANTIC JANUARY CLEARANCE

# SALE

### WOMEN'S SHOES

FLATS

Reg. to 4.95

**2.88**

Others Reg. 5.95 to 7.95

ONLY 3.88

Black and Brown PUMPS

Broken Sizes Reg. 12.95 to 19.95

Others Reg. to 7.95

Only 4.95

**8.95**

### MEN'S SHOES

Broken sizes

Reg. to 8.95

**5.95**

MEN'S SHOES

Reg. 12.95 . . . . .

**6.95**

MEN'S SHOES

Reg. 14.95 . . . . .

**9.95**

### BOYS' SHOES

Boy Shoes

Sizes 3 to 6

Reg. 5.95

NOW ONLY . . .

**3.49**

### GIRLS' SHOES

MISSIES' AND CHILD'S

Oxfords and Blk. Patents

Sizes 8 1/2 to 8

Reg. 3.95 to 4.95

NOW ONLY . . .

**2.49**

# SHEEN and MacINNIS

Water St.

Summerside

