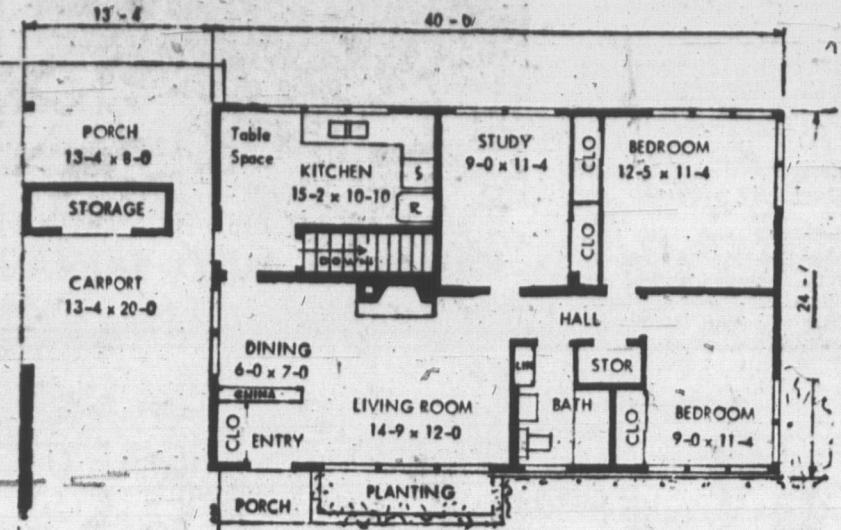
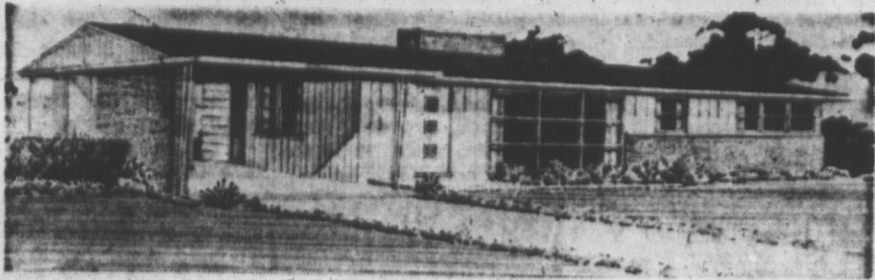


**GUARDIAN-PATRIOT HOME OF THE WEEK**



A lovely home with an interesting low pitched roof. You walk into a living and dining "L" that is spacious enough for any furniture arrangement. Featured in the room is a fireplace and built-in China cabinet. Two large bedrooms with wardrobe space plus a study that will serve as an extra bedroom are among the many comforts offered here. A bath with plenty of linen room is also provided in this modern one floor home. There is fine traffic circulation throughout and direct access to the basement from outside. Also available for frame construction.

**HOW TO OBTAIN DESIGN BOOK**  
The latest design book entitled "Canadian Guide to Home Planning and Design" is now available at the offices of The Guardian and The Evening Patriot for \$1. tax free. This new edition includes color selection, etc., plus over 100 popular new designs to choose from. Also included are full designs on how to order blueprints.

**First Aid For Ailing House**

**QUESTION:** We have a big crop of assorted gourds we raised in our garden this year. We would like to preserve them to keep through the winter indoors. What is the proper way to finish them to preserve them?  
**ANSWER:** Brush the surfaces first, to remove all dirt. Then wash in mild soap suds, followed by ample rinsing with clear water. Wipe them dry with clean, dry cloths. When thoroughly dry, apply one of the following finishes: One or two thin coats of pure, fresh white shellac; a thin coat of wax enamel in any desired color. Ideally it's best to let the gourd dry out by themselves for a couple of weeks, or a month before this treatment. I've seen white spots develop after finish applied prematurely.

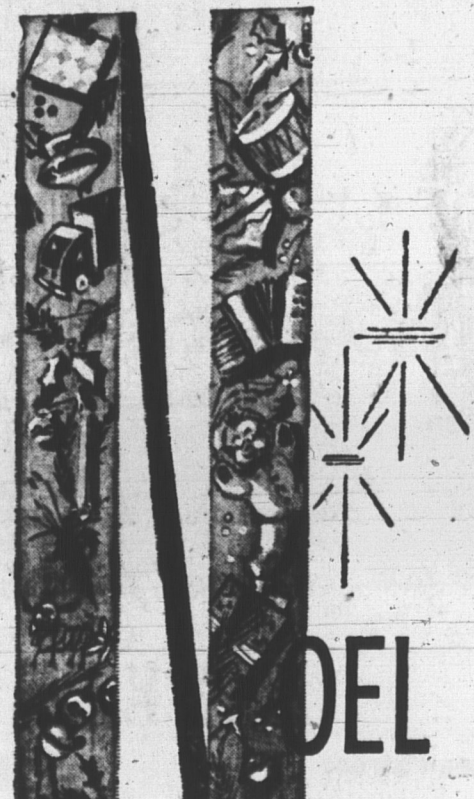
**QUESTION:** Would like to refinish a drop leaf table. One leaf is warped and has several dark stains. How can this be restored?  
**ANSWER:** I assume you are removing any present finish on the table first. When the bare wood surface is exposed, place the warped leaf, concave side up, over a pair of saw horses or chair backs, in a place where they can remain undisturbed for at least a week or 10 days. Place heavy weights (pails of water, large books or rocks, etc.) on the raised ends. This will gradually cause the board to straighten. Remove the dark stains with a prepared wood bleach according to label instructions. Then refinish table as desired.

**QUESTION:** We recently moved into a home about 10 years old. In spite of the fact that we have repainted the linen closet washed the shelves and used fresh, clean paper, the closet retains a musty odor. This is so unpleasant I dislike storing my linens and blankets there as they pick up this odor. Can you suggest something to remove this odor?  
**ANSWER:** Try spraying all surfaces with a mildew proofer which both combats mildew and musty odors. This preparation does not stain. Available in large housewares and hardware stores. Or sprinkle a generous quantity of moth flakes or crystals in the closet and keep the closet lightly shut for about a week. These not only mothproof, but act as deodorizers.

**QUESTION:** We have poured concrete foundation walls. Whenever we have a heavy rain we get water through some of the cracks. The house is about 35 years old. We also have a problem with the concrete floor sanding and dusting. We want to remodel and can't until we correct these problems.  
**ANSWER:** Easiest method of repairing the cracks in the concrete walls is to fill them with a latex patching concrete, available at masonry supplies and some large hardware dealers. This eliminates having to widen cracks before filling and keeping repair dampened for a week. Sanding and dusting are usually due to a faulty concrete mix. But applying a transparent, liquid, cement-hardening preparation is generally all that is necessary to stop the annoyance.

**QUESTION:** I have promised to redecorate my daughter's bedroom. She is very anxious to have a canopy over her bed. Is there any place I can get plans for a half-round style?  
**ANSWER:** Complete plans for four bed canopies, among them a half-round style, are available free from the Masonite Home Service Bureau, Box B, Chicago, Ill. 60600. Just send them a postcard.

**QUESTION:** My husband has a desk set of leather. He's been using it for years and there are several scratches on some of the pieces. How can these small scratches be treated so they won't be so noticeable? The leather is still in excellent condition otherwise.  
**ANSWER:** Paint the scratches with a leather dye to match



**GREETINGS AND BEST WISHES AT THIS MOST JOYOUS TIME**  
**McAskill Woodworking Limited**  
26 Beasley Ave. Parkdale



**merry Christmas**  
Christmas is made of snowflakes and church bells and laughter and dreams... may all of yours come true. Have a Merry Christmas.  
**FORD ELECTRIC**  
70 Newland Crescent Charlottetown

eight years old. We wish to replace the vinyl floor covering in the bathroom with ceramic tile. We could not afford it at the time we built. Do we have to remove the vinyl first? It is in good condition as we have air conditioning and a dehumidifier. If the vinyl must be taken up, how?  
**ANSWER:** Ceramic tile can be put down over a clean, smooth concrete or firm wood floor. The vinyl will first have to be removed. This is most easily done by using dry ice (about 10 pounds), allowing the ice to remain from 10 to 15 minutes on a section of the tile, until tile and adhesive underneath become brittle enough to pry up with a putty knife. While prying up one section, sweep dry ice along to adjacent section. Be sure to wear heavy work clothes while handling dry ice.  
**QUESTION:** Our front porch screened with copper and white wooden frames. When it rains, there is a greenish deposit on the white frames from the screening. Is there a solution which might be used to clean the copper screening and a coating to prevent this staining? I do not want to paint the screening.  
**ANSWER:** Use a clean and polishing preparation for copper; available supermarkets, housewares and hardware stores.

Then wipe screening with beeswax, being careful of the fire hazard.  
To prevent future staining, re-coat the screening with a good quality spar varnish, thinned with an equal amount of a half-and-half mixture of linseed oil and turpentine.

The Guardian, Charlottetown, Fri., Dec. 24, 1965. 9

**HUGHES DRUG CO. LTD.**  
150 Queen Street Dial 4-5545

**QUESTION:** Check the label on the glue container for the by the manufacturer. Use this and fine steel wool and careful rubbing to remove the glue spots. If no solvent mentioned, use a nonflammable liquid spot remover, instead. If any of the touch up with fine artist's brush and matching finish material.  
(Note: All queries relating to home maintenance should be addressed to: Mr. Roger Whisman, Toronto Star Syndicate, 90 King St. W., Toronto, Ontario).  
**QUESTION:** Our home is

**TANTONS ACCESSORIES**  
Great George St. Charlottetown

**TANTONS ACCESSORIES**  
Great George St. Charlottetown

**HALIFAX SEED CO. (P.E.I.) Limited**  
72 Queen Street Dial 4-8313

**THE ELITE MILLINERY**  
142 St. George St. Ch'town

**FORD'S Meat Market**  
Elm Ave. Ch'town

**ROBINSON'S IRVING**  
Richmond Street Charlottetown

**OK TIRE and MUFFLER CENTRE**  
St. Peter's Road Parkdale

**W. R. SHAW**  
Premier