

## AUCTION SALE

PROPERTY AND HOUSEHOLD EFFECTS  
TRYON, WEDNESDAY, APRIL 27th, 1 P.M.

I am instructed by the Executors of the estate of the late Barbara Nicholson to sell by public auction above day and date her property and all her household effects in part as follows:

### PROPERTY:

The property consists of house, barn and lot adjoining United Church, Tryon.

### HOUSEHOLD EFFECTS:

Kitchen range; table and chairs; dining room table and chairs; 2 couches; 2 chests drawers; electric heater; washing machine; tool chest; trunks; 4 occasional rockers and chairs; wash stand; parlour tables; studio couch; 2 wall mirrors; electric iron; 3 sets bedroom dishes; sewing machine; battery radio; hotplate; hooked rugs; Quebec heater; spool beds; beds; springs; mattresses; oil heater; dressers; linen; silverware; dishes; 2 feather ticks; several pairs, good wool blankets; bedding; wheel barrow; lawn mower; garden tools; all kinds of kitchen utensils, and hundreds of other assorted articles; 4 cords wood.

This is a complete clearance sale of an old established home and many articles are of an antique nature.

### TERMS CASH.

If day unfit, sale will be held next fine day following.

E. C. BELL,  
Auctioneer.

## AUCTION SALE

CLYDE RIVER, WEDNESDAY, MAY 4, 1.00 P. M.

Having sold my farm, I offer for sale by public auction my entire stock and farm machinery consisting of—

### STOCK:

2 horses, heavy, age 11 and 14 years; 1 cow newly freshened with calf; 2 cows to freshen; 4 two year old, 3 one year old, grade shorthorns. One sow with litter of ten.

### IMPLEMENTS:

Massey Harris Binder nearly new; 1 Massey Harris sectional seeder; Manure Spreader; Wheel Harrows; Lever Harrows; Light Harrows; Roller; Team Truck Wagon; Single Truck Wagon; Driving Wagon, Cart; Hay Rake; Potato sprayer; Pulper; Box Sleigh; 2 wood Sleighs; Grain Grader; Fertilizer Spreader; Hay Mower; DeLaval Separator; Scales; Mangel Sower; Scufflers; Hillers; Gang Plow, Single Plow; Bruce Stewart Potato Digger; Brooder Stove; 40 Bushel Seed Oats; Seed Wheat; Harness, and other articles.

If weather unfit, Sale will be held at same time, following day.

TERMS: Under \$10 cash — over \$10, 6 mos. on approved joint notes.

Heater Darrach

John C. MacPhee  
(Auctioneer)

## TENDERS

Will be received for hauling cream on all routes by

the undersigned until Thursday, April 28 inst.

KENKORA DAIRYING CO-OP

ASSOCIATION LTD.

## ATTENTION LIVE STOCK BREEDERS

The following information pertaining to the Veterinary Policy in effect in this Province may help to eliminate some misunderstandings that exist re the status of Government subsidized Veterinarians practicing throughout the Province.

1. These Veterinarians are paid a subsidy by the Provincial Government through the Department of Agriculture and are not employees of the Government.
2. The subsidies they receive are for a twofold purpose: First, to provide the live stock breeder professional services at a uniform low fee regardless of distance travelled. Second, to compensate the Veterinarians for long mileages driven, and very high depreciation on their cars.
3. They own their own cars, and receive no mileage allowance for operating same. The average yearly mileage for each Veterinarian is approximately 32,000 miles. A great deal of this driving is done in spring and fall months when road conditions are not good.
4. The Veterinarians purchase from wholesale drug houses and keep on hand all drugs and supplies necessary for the treatment of live stock, and are responsible for all collections for professional services and medicines supplied.
5. This Department believes that our "Veterinary Policy" is one of great value to our farmers, and solicit your wholehearted co-operation by prompt payment for services rendered, and eliminating as far as possible the necessity of night and Sunday calls unless the case is an emergency. Thank you.

P. E. I. DEPARTMENT OF AGRICULTURE

## AUCTION SALE

I am instructed by Keith Bryenton to sell by public auction on his premises at Union Rd. on Saturday, April 30 at 1:00 o'clock, the following:

15 brood sows to farrow in May; 1 boar one year old; 1 Cocksutt self propelled Combination 10' cut; 1 Cocksutt 70 tractor reconditioned; 1 Farmall "A" tractor with 7' cutting bar, scuffler and tiller attachment; one 3 furrow Cocksutt tractor plough scalloped coulters; 1 four section lever spring tooth harrows I. H.; 1 I. H. Hayloader; 1 M. H. hay-mower 6'; 1 three section spike tooth harrow; 1 rubber tired dump cart horse or tractor drawn; 1 stock box for G. M. C.; 1 14 section disc harrows; 1/2 share in lime and fertilizer spreader; 1/2 share in grain drill with fertilizer attachment Cocksutt; 1 truck wagon; 1 10" Cocksutt grain crusher; 1 6" x 30' belt; 2 wood sleighs; 1 box sleigh; 1 set platform scales; 1 set grain separators; 1 electric welder Ford V-8 motor driven; 1 200 gal. farm gas tank with pump; 1 straw blower; 1 power lawn mower; 1 Buffalo robe; 1 clay scoop.

Terms of sale under \$50 cash, over that 8 mos. credit on approved joint notes at 6% per annum.

5% off for cash over \$50.

Claude Groswell  
Auctioneer



The  
Board of Education  
Township of North York  
Solicits Applications  
for the position of  
SCHOOL  
PSYCHOLOGIST

North York is a large and rapidly developing township in the Metropolitan Toronto area. There are 22 Public and 1 Secondary Schools now in operation with a school population of 25,000. An additional 12 Public Schools and 1 Secondary Schools are being planned.

The salary offered for this position is \$5,300 to \$6,000 and the usual benefits of sick leave, pension and insurance, etc., are provided. Duties will begin August 1st, 1955. A personal interview will be required. Preference will be given to holder of Ph.D. in Psychology. Please submit written application by June 1st, 1955, stating qualifications, age and experience to—

Director of Education  
Township of North York  
7 Kenneth St.  
Willowdale, Ontario

F. C. Stinson F. W. Minkler  
Chairman Director of Education

**PLANT A NEDGE** Order Now — shipped as the proper planting time.

**FREE** — 3 Personal Baby Breath Plants for EARLY orders. "Best Quality Only"

**PRIVET** — "Amurense" variety, medium growth — the only healthy kind; 12-in., 25 for \$3.98 or \$25.00 per 100.

**ROSA MULTIFLORA** — "Natura's Hedge of Hardy Roses" — 18-in., bushy, transplanted, 25 for \$2.49 or \$21.00 per 100.

**RED BARBERRY** — Maroon red, 12-in., 25 for \$2.98 or \$22.00 per 100.

**PAEONY ROOTS** — (Rabbit-tail) Red, white or pink, 3 for \$1.98.

**FREE** With Every Order Canada's Finest Colored Garden Gully

**Brookdale-Kingsway Nurseries**  
DOWNSVIEW, ONTARIO

Continued from Page 1

## Husbands Wants

other lacks understanding. F. P.

The Wrong Road Away From Self

DEAR F. P.: The neighborhood tavern is the poor man's club in our society. Most patrons of such places are frustrated persons leading a hand-to-mouth existence. They lack a sturdy high purpose in life, and are buying escape from reality when they loiter for hours over drinks.

Also, the practise of patronizing taverns for "relaxation" (the loiterer's term for escape-from-self), leads to a greater separation from reality than the habitue knows. His time and money are wastefully spent, with nothing constructive acquired. But worse than this is the aimless isolationist nature of the performance—which amounts to solitary drinking, in sight of other solitary drinkers, each lost in his own private fog of defeatism.

This kind of drifting, as an evasion of living — especially when hard facts of life are your deck of cards — has a steady handicapping effect on character. It progressively undermines the capacity to organize one's forces, to take hold of situations, to think

straight and so on. Also it drives a wedge between the person and his more responsible associates in the real world. It puts a chip on his shoulder in relation to them. He is on the defensive — against his own conscience, really — thus belligerent to even a hint of disapproval.

### Social Spirit Needs Exercise

So I don't go along with George's desire to spend several hours a week in the neighborhood bar, although I don't dispute his inalienable right to some stag recreation. I think he ought to explore his environment for something worthwhile to do, in a weekly recess from domestic routine.

George wants and needs the experience of belonging to a group of men who welcome his society. As we say nowadays, he has the team spirit — and nowhere to exercise it — at present, unfortunately. My advice to him is to join forces with the men's group in the most socially active church nearest him. And to consult the activities calendar at the nearest YMCA, to see what it offers him of congenial sports, fellowship and fun on the regular schedule.

If you will make a place for yourself in the comparable fields of women's interests, you won't mind George's insistence on widening the horizon a bit. Your

Tuesday, April 26, 1955 The Guardian Page 13

current heartache is a byproduct of a too narrow life.

M. H. Mary Haworth counsels through her column, not by mail or personal interview. Write to her in care of The Guardian, Charlottetown.

**NORTON GRINDING**  
WHEELS and Abrasive Products for all industrial applications. Each of the 16 F-M branches across Canada is a complete supply centre for all types of industrial supplies and equipment.

In Saint John:  
15 Prince William Street, Tel: 3-3294

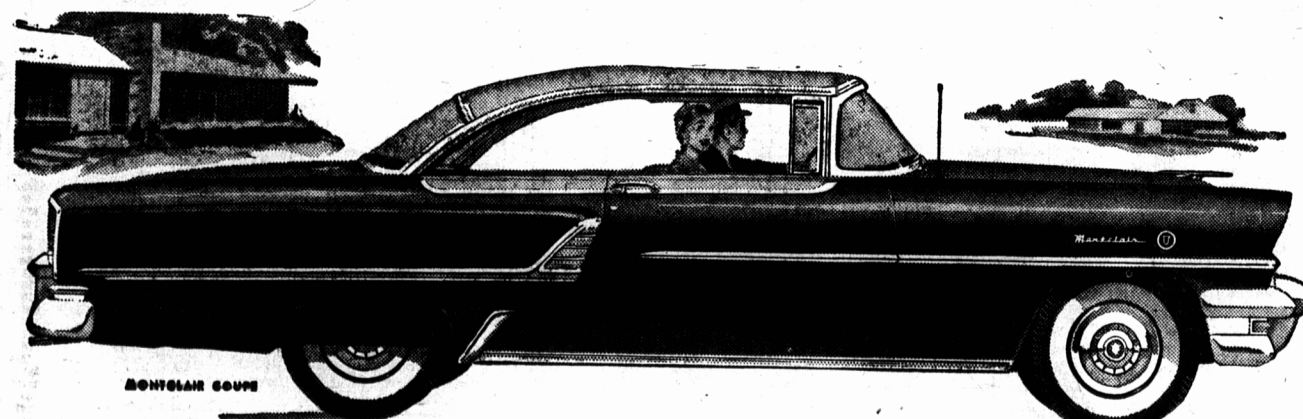
**FAIRBANKS-MORSE**  
for ALL INDUSTRIAL SUPPLIES

Good news for  
**CANADIAN**  
Motorists

**NOW** you can put the new  
**Firestone**  
De Luxe Champion  
**TUBELESS**  
on your present car for the  
**SAME PRICE**  
AS REGULAR TIRE  
TUBE

**NEW Safety-Tensioned**  
Gum-Dipped Cards for  
Extra Safety and Mileage

The Firestone Gum-Dipping process, patented in 1928, has long been famous for extra protection against blowouts. Now, with valuable speedway experience and millions of miles of testing on the highway, Firestone combines Gum-Dipping with Safety-Tensioning to take the stretch out of tire cords, a major cause of tire failure in high speed driving. The result is greater blowout protection and longer tire life.



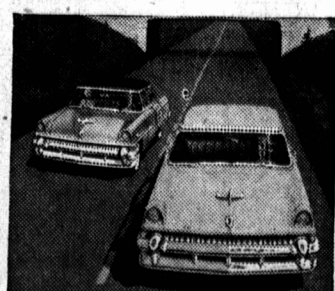
# Compare - it pays to own a MERCURY V-8

(and it costs less than you think!)

Now '55 Mercury is bigger all over—in length, width and wheelbase. Completely new bodies! Completely new styling!

Compare Mercury's luxuriously long, low silhouette. This is a dream on wheels—in 3 magnificent series—the all-new ultra-smart Montclair's; popular Monterey and Custom models. Mercury's dramatic new colour-harmonized interiors are more thrilling than ever before!

Compare Mercury's smoother, quieter ride—exceptional handling ease—resulting from new improvements in Mercury's ball-joint front suspension. And compare new Merc-O-Matic Drive with brilliant "low gear" get-away. It's optional, as are power steering, power brakes, 4-way power seat and power-lift windows.



Mercury's new overhead-valve, SUPER-TORQUE V-8 engines give split-second getaways—Instant response at all speeds!

Compare performance! See for yourself how Mercury puts high horsepower to work at normal driving speeds giving you super pickup the instant you need it. All '55 Mercurys are powered by new overhead-valve V-8 engines—products of the builder of more V-8's than all other makers combined—198 Hp. in Montclair models; 188 Hp. in Monterey and Custom models.

See your Mercury dealer—and compare the new Mercury for value. You'll quickly see why so many people are saying "It pays to own a big, beautiful '55 Mercury!"

**All These Extra Features at No Extra Cost**

<b>Blowout Protection</b>  There's no tube to pinch or explode! The Safi-Liner, which holds the air, also reinforces the tire... instead of a dangerous blowout you get a harmless slow leak.	<b>Puncture Protection</b>  If a nail or any sharp object should penetrate this tire, the Safi-Liner grips it and shows air loss... No sudden flat tires, no need to change flats on the road.	<b>Skid Protection</b>  Newly designed silent tread has more non-skid angles... more skid-protecting edges than ever before... has 70% more skid-resistance than ordinary tires.	<b>Greater Comfort</b>  New resilient tread compounds and flexible tread design absorb bumps and road shock and cushion the ride. Elimination of the inner tube also provides a softer ride.
---	--	--	--

**SEE YOUR NEAREST FIRESTONE DEALER TODAY**

<b>TOM DAVIES</b> Great George St. Dial 6034	<b>TANTON'S TIRE SERVICE</b> 152 Kent St. Dial 3574
<b>FRED HICKOX</b> St. Avards Dial 8315	<b>CORISH'S SERVICE STATION</b> Southport TEXACO Dial 5014

**STEWART MOTORS LTD.**  
YOUR MERCURY - METEOR DEALER  
224 ST. GEORGE ST. CHARLOTTETOWN

**F. EARLE MacDONALD LTD.**  
MERCURY - METEOR CARS  
96 WATER ST. SUMMERSIDE

**FOR A SAFE BUY USED CAR... SEE YOUR MERCURY DEALER**