

DAILY MARKET QUOTATIONS

SUMMARY

By THE CANADIAN PRESS
Toronto: Market mixed to higher; moderate trading
New York: Market mixed; fairly active trading
Montreal: Market closed.

CURRENCIES

MONTREAL (CP) - The United States dollar in terms of Canadian funds was down 1 cent at \$1.07 15-16. Pounding sterling was down 1/4 at \$3.02 15-16.

DIVIDENDS

By THE CANADIAN PRESS
Canadian Packers Ltd., class A common 18 1/2 cents, Oct. 1, record Aug. 30.
Island Natural Gas Co. Ltd., five cent pd. 25 cents, July 15, record June 28.
Minnesota and Ontario Paper Company, 25 cents, Aug. 1, record July 5.
Fennema Ltd., common 45 cents, Aug. 15, record July 15; pd. \$1.50, Aug. 1, record July 2.
Reverend Properties Co. Ltd., 6 1/2 per cent pd. series A 32 1/2 cents, Aug. 15, record July 15.

NEW YORK

NEW YORK (AP)-Rails and aircrafts staged brisk rallies Monday as the rest of the market lunged in a mixed pattern. The averages were divided in their interpretation of the day's trading. But there were more declines than advances among individual stocks.
Changes of key issues were mostly in fractional amounts. There were a greater number of advances among specialists.
Oils and tobaccos had an edge in the plus column. Steels, motors, electronics, chemicals, and building materials were off. Rubbers, utilities, airlines and drugs were mixed.
The Associated Press average of 60 stocks advanced 5/8 to 274 1/2.
The Dow Jones average of 30 Industrials declined 2/32 to 718 1/2.
Volume diminished to 3,720,000 shares from 4,130,000 Friday.
Steels failed to find further support in the fact that the industry had reached its lowest cost level since 1944. U.S. Steel dropped 1/4 to 49 1/2 and other major steelmakers were down by fractions.
Aluminum Ltd., jaws up 1/4. International Nickel ahead 1/2. Canadian issues up 1/4 among Canadian issues while Distillers Seagrams and Walker Greeting Cards dropped 1/4 each and Granby Mining dipped 1/4.
American Stock Exchange prices were mixed. Volume dropped to 1,270,000 shares from 1,400,000 Friday. Canadian issues were mixed with Preston up 1/4 and Brazilian Tractor ahead 1/2 while Scurry Rethrow Oil fell 1/4 and Fargo Oil up 1/16.
What stocks did:
Mon Fri
Advances 560 343
Declines 140 134
Unchanged 322 279
Total 1022 1056

NEW YORK CLOSING STOCKS

Table listing various stock prices and changes, including Alcoa, American Steel, and others.

TORONTO

TORONTO (CP) - Industrialists gained in a last hour flurry of energy following a generally listless day on the stock market. Monday's trading resumes getting most of the attention.
The industrial index which started off strongly but faded to an 18 point decline on the 2 p.m. index, then picked up strength to finish ahead 1.06 at the close.
Industrial advances were less than 1/4 in most cases. Issues gaining included Albitol, Aluminum, Argus, B.C. Telephone, Calgary Power, De Pont, and Moore Canada Cement and Macmillan Bloedel both gained 1/4.
Bell Telephone, Royal Bank and Texaco Canada were among the losers, all falling.
Dips of 1/4 went to Distillers Seagrams, Atlantic Sugar and International Pipe.
SPECULATIVES ACTIVE
Trading in speculatives was the favorite pastime of the day. Tribig Mines gained 20 cents to \$2.56 and Belchem Copper advanced 35 cents to \$4.85.
New Senator rose three cents to 29 cents and Zulueta was up three cents to 39.
Noranda fell 1/4 among quadrating energy base metals.
On index, 14 of 25 trials advanced 1.06 to 636.39 while all other sections were lower, 60 to 87 to 87 1/2, base metals, 28 to 282.31 and western oils 63 to 117.88. Volume at the close was 4,621,000 shares compared with 4,280,000 at the same time Friday.

Calgary and Edmonton declined 1/4 and Central De Rio slipped 1/2 cents to \$7.50 in other western oils.

TORONTO 2 P.M. STOCKS

Table listing Toronto 2 P.M. stock prices and changes, including Alcoa, American Steel, and others.

Calgary and Edmonton declined 1/4 and Central De Rio slipped 1/2 cents to \$7.50 in other western oils.

TORONTO 2 P.M. STOCKS

Table listing Toronto 2 P.M. stock prices and changes, including Alcoa, American Steel, and others.

Calgary and Edmonton declined 1/4 and Central De Rio slipped 1/2 cents to \$7.50 in other western oils.

TORONTO 2 P.M. STOCKS

Table listing Toronto 2 P.M. stock prices and changes, including Alcoa, American Steel, and others.

YORK

Mr. George Whitlow and Mrs. William Vesey and her daughter Florence, also Miss Deborah MacDonald and Miss Vera Mallet, were recent visitors to Charlottetown.
Mrs. E. J. Vesey, Charlottetown, has moved to her home in New York.

MONTREAL (CP) - Prices were steady with little in the Montreal livestock markets Monday. Trading was active and demand good.

Receipts were: 341 cattle, 187 calves and 10 hogs.
Choice steers were 25-25.50, good 24-24.50, medium 23.75 and common 18.50.
Good heifers were 20.25-21.50, medium 17.75-19 and common 16.75.
Good cows were 17.25 - 19.50, medium 16.50 - 18.25, common 13.50-16.75 and canners and cutters 11-12.
Good bulls were 20-21.25 and common a d medium 15.50-18.25.
Good vealers were 24-28, medium 21-22 and a few common at 10.
Prices for hogs, sheep and lambs were not established.

LIVESTOCK

Table listing livestock prices for various categories like Cattle, Hogs, Sheep, and Lambs.

Table listing various commodity prices like Fat, Pork, Bacon, and other goods.

YORK

Mr. George Whitlow and Mrs. William Vesey and her daughter Florence, also Miss Deborah MacDonald and Miss Vera Mallet, were recent visitors to Charlottetown.
Mrs. E. J. Vesey, Charlottetown, has moved to her home in New York.

YORK

Mr. George Whitlow and Mrs. William Vesey and her daughter Florence, also Miss Deborah MacDonald and Miss Vera Mallet, were recent visitors to Charlottetown.
Mrs. E. J. Vesey, Charlottetown, has moved to her home in New York.

YORK

Mr. George Whitlow and Mrs. William Vesey and her daughter Florence, also Miss Deborah MacDonald and Miss Vera Mallet, were recent visitors to Charlottetown.
Mrs. E. J. Vesey, Charlottetown, has moved to her home in New York.



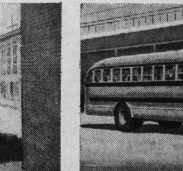
WHATEVER YOU DELIVER
there's an International truck to do it at less cost!



The 4-wheel drive truck will take your deliveries almost anywhere in any weather! Use it with the standard five-foot pickup box or convert it in minutes to a steel-body construction wagon. The versatile truck with a 4-cylinder, 93.4 hp engine is ideal for delivery to rural homes, construction sites and other off-highway destinations.

International Pickups are all-truck built to last longer on the toughest delivery job. The 144 hp truck with 264 cu. in. displacement is the most powerful in-line six offered as standard equipment in any pickup. And other power train components are matched to this rugged truck power. Boxes range from 7 to 8 1/2 feet to suit your loads.

The Metro has functional design to put every cubic inch to work! Because these are walk-through vans, the driver can readily use either door and reach the load area without opening equipment in any pickup. And other power train components are matched to this rugged truck power. Boxes range from 17,000 to 27,000 lbs.



The International Loadsters are the most maneuverable conventional trucks on the road with the shortest turning radius in their class. They're ideal for any type of delivery and any body style. Relaxing flat-angled steering wheel and posture perfect seat keep drivers efficient all day through. GVW ratings range from 19,500 to 39,000 lbs.

The new CO Loader truck with tilting cab has the easy-handling maneuverability you need for busy city streets. The short bumper-to-back-of-cab dimension and sharp turning radius tailor it to a wide range of bodies including tractors, vans, tankers, flat beds and bucket's bodies. GVW ratings range from 17,000 to 27,000 lbs.

International school bus chassis are safety-built throughout. Full driving vision and control, positive steering and dependable engines are precision-engineered into every chassis. Complete passenger safety and all-weather reliability are assured.

P.S. These are just a few of the more than 50 basic International trucks from which you can choose the model that's exactly right for your job.

INTERNATIONAL TRUCKS

Built, Sold and Serviced by Truck Men

INTERNATIONAL HARVESTER COMPANY OF CANADA, LIMITED

225 THORNE AVENUE, SAINT JOHN, NEW BRUNSWICK

SUNNY ISLE FARMS LTD.

CHARLOTTETOWN P.E.I.
Kensington P.E.I.
Summerside P.E.I.

E. C. Gaudette & Sons Ltd. Tignish, P.E.I.
Wellington Sales & Service Wellington P.E.I.