

Churches

Continued from Page 16
 Baptist Pastorate, Sunday, August 21: Tryon: Church School 10 a.m. Worship 11 a.m. Westmoreland: Church School 10.30 a.m. Worship 8 p.m. Everyone welcome. Rev. Edward G. Britten, pastor.

ALBERTON and Montrose Pastoral Charge, the United Church, Rev. Ronald Pocklington, B.A., B.D., minister. Mr. Brian Gazzard, B.A., student-assistant. Mr. Pocklington will conduct worship in Tignish 9.30 a.m. Elmsdale 11 a.m. Montrose at 3 p.m. Mr. Gazzard will conduct worship in Alberton 10 a.m. Cascumpee 11.15 a.m. Miminegash 7.30 p.m. No Sunday School in Alberton. Other Sunday Schools at usual hours.

BEDEQUE NORTH Pastoral Charge, the United Church, Minister, Rev. R.M. Shaw. Traveler's Rest. Worship 9.30 a.m. Sunday School 10.30 a.m. Free-town: Sunday School 10 a.m. Worship 11 a.m. North Bedeque: Sunday School 10 a.m. Worship 7.30 p.m.

ALBERTON AND West Point Presbyterian Services, Aug. 21. Rev. J.S. McBride, interim-moderator. Mr. A.R. Murray, Catechist. Alberton: Sunday School 10.30 a.m. Worship 11 a.m. West Point: Sunday School 6.30 p.m. Worship 7.30 p.m.

TRYON Charge, the United Church, Sunday, August 21. Cape Traverse: Sunday School 6.30 p.m. Worship 7.30 p.m. Tryon 9.45 a.m. Crapaud 11 a.m. Rev. A.H. O'Brien, minister.

O'LEARY United Pastoral Charge, Rev. Elroy McKillop, B.A., B.D., minister. Sunday, August 21. West Devon and Brae at West Devon 9.30 a.m. O'Leary 11.15 a.m. Bloomfield 7.30 p.m.

RICHMOND BAY Pastoral Charge, Sunday, August 21. Victoria West 11 a.m. Lot 14 5 p.m. FreeLand 8 p.m. Young People's Fellowship at the manse, Saturday, August 20 at 8 p.m.

THE PRESBYTERIAN Church, North Tryon and Bradabane Churches, North Tryon: Owen MacRae, Charlottetown 11 a.m. Sunday School 12 noon. Bradabane: Annual Thankoffering service, conducted by Rev. Tom Glass, Charlottetown, with special music by the Clinton Choir. Everyone welcome. Rev. Raymond L. Ellis, interim-moderator.

MOBILE Gospel Hall, Albany. Meeting Lord's Day 9 p.m. Special meetings continue nightly at same hour except Saturday. P.A. system in use for overflow crowd, ample parking.

BEDEQUE Pastoral Charge, the United Church, Rev. R.M. Cameron, minister. Bedeque: Church School 10 a.m. Worship 11 a.m. Borden: Worship 9.30 a.m.

ANGLICAN Church, Parish of New London, 9.30 a.m. Holy Communion, St. Thomas, French River. 11 a.m. Holy Communion, St. Stephens, Burlington. 7.30 p.m. Evening Prayer, St. Marks, Kensington. Rev. H. J. Flander, rector.

ANGLICAN Church, Parish of Port Hill, Rev. Delmont Yeo, rector. Eleventh Sunday after Trinity. Ellerslie 9 a.m. Port Hill 11 a.m. Inverness and Lot 11 and Inverness 8 p.m.

KENSINGTON United Church Pastoral Charge, Sunday, August 21. Summerfield 9.30 a.m. Kensington 11 a.m. Rev. Gordon D. MacBeth, B.A., B.D., minister.

FREE CHURCH of Scotland. Worship: Coleman 9.30 a.m. Summerside 11.30 a.m. Cape Traverse 2 p.m. Mr. David Compton, student minister. Rev. Ewen E. MacDougall, interim-moderator.

Stock Exchange Names President

NEW YORK (AP)—Ralph S. Saul, a sharp critic of the American Stock Exchange while he was a member of the U.S. Securities and Exchange Commission, has been elected president of that exchange.

An exchange spokesman said Saul is expected to replace Edwin D. Etherington in the \$100,000-a-year position "sometime in early winter."

Etherington has accepted the presidency of Wesleyan University.

Saul, 44, was elected at a special meeting of the 32-member board of governors.

A lawyer, Saul was head of the SEC's division of trading and marketing and delivered a report in 1962 sharply critical of trading operations at the Amex.

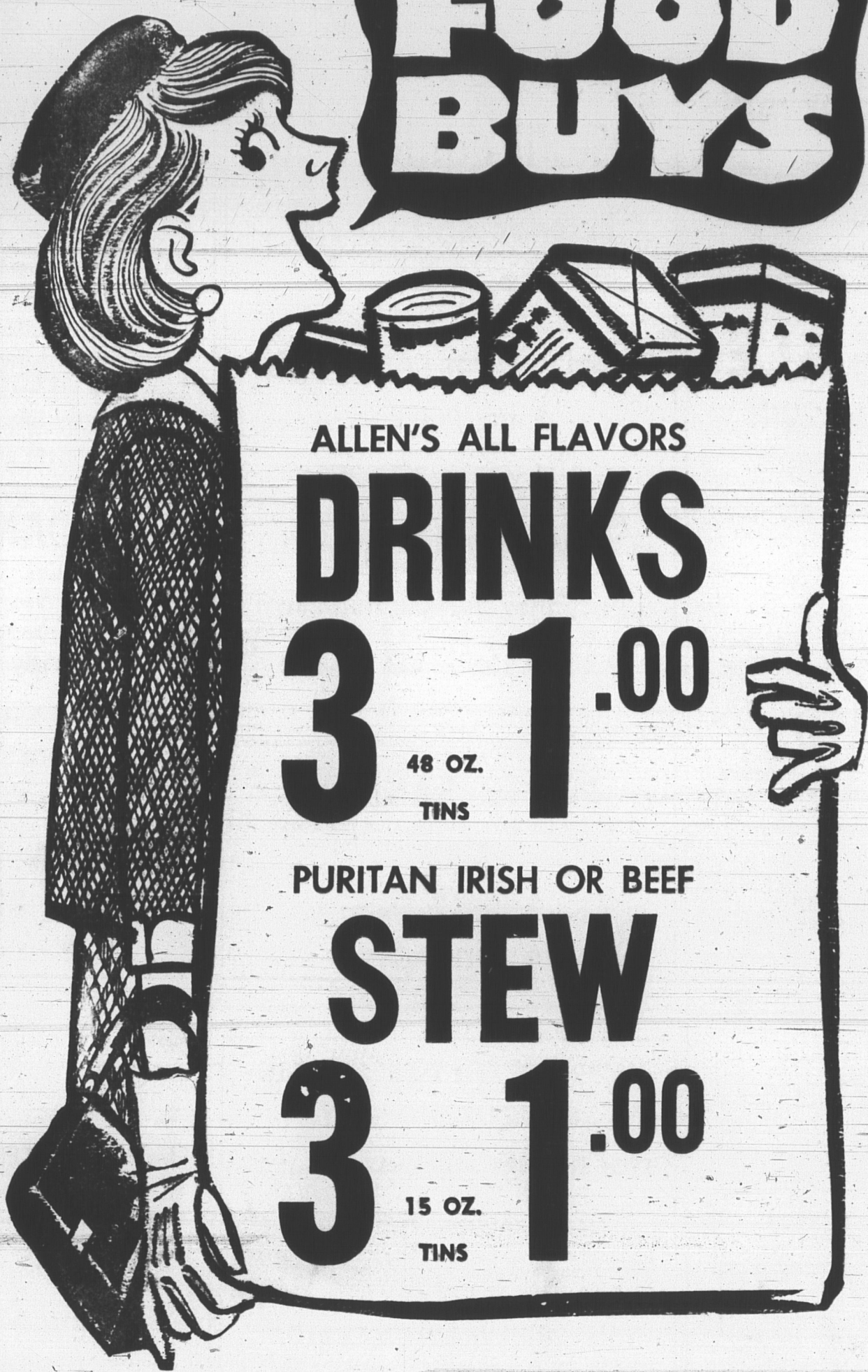
Last year Saul became a vice-president of Investors Diversified Services Inc., which operates five mutual funds in Minneapolis, Minn.

Saul was on the legal staff of New York Governor Thomas E. Dewey from 1952 to 1954 and worked four years in the legal department of Radio Corporation of America before going with the SEC.

HOSPITAL GETS SUPPLIES

HAMBURG (AP)—A West German government aid contribution of 600,000 marks (\$150,000) in hospital equipment and medical supplies was loaded Tuesday on the French freighter Tayga bound for South Viet Nam. The shipment, including three ambulances and 22 cases of operating room equipment, is destined for a civilian hospital at Hoi in Quang Nam province.

TAKE HOME THESE
FOOD BUYS



ALLEN'S ALL FLAVORS

DRINKS
 3 48 OZ. TINS **1.00**

PURITAN IRISH OR BEEF
STEW
 3 15 OZ. TINS **1.00**

PETER PAN

PEACHES 3 15 OZ. TINS **69^c**

BROWN'S FESTIVAL MIX

COOKIES 103 Cookies **83^c**

MONARCH SALAD

DRESSING 16 OZ. JAR **35^c**

CORDON BLEU WHOLE

CHICKEN 3 1/4 LB. TIN **1.19**



CLOVER FARM
 INSTANT
COFFEE
 6 OZ. JAR
88^c

Monarch Dressings 8 OZ.
 ITALIAN 29^c 1000 Islands 29^c
 FRENCH 25^c

PERFECTION
ICE CREAM 1/2 GAL. **99^c**

FRASER VALE
 Fish 'n Chips 24 OZ. PKG. **53^c**
 SUNKIST
 Lemonade 6 OZ. TIN **13^c**

Prices Effective 'Til Closing Time Aug. 20th



from

GRADE "A" READY CLEANED BROILER

CHICKEN Lb. **43^c**

GREEN GABLES

WIENERS Lb. **55^c**

NOVA SCOTIA

SCALLOPS Lb. **69^c**

FIRM RIPE

Tomatoes Lb. **25^c**

Sweet South African
ORANGES
 SIZE 125 DOZ. **49^c**

P.E.I. Red Ripe
CHERRIES
 6 QT. BASKET **1.89**

Golden Ripe
BANANAS
 L.B. **19^c**

KELLOGG

RICE KRISPIES 2 16 OZ. PKGS. **63^c**

KING COLE

TEA BAGS 60 GAUZE **89^c**

PUSS 'N BOOTS, Chicken, Fish and Liver

CAT FOOD 2 15 OZ. TINS **35^c**

CRINO INSTANT

MILK POWDER 3 L.B. TINS **1.19**

COLGATE'S WHITE OR PINK—BATH SIZE

BEAUTY SOAP 2 FOR **35^c**

MACLEAN'S

TOOTHPASTE LARGE 3 FOR 1.00 GIANT, EACH **59^c**

SANITARY NAPKINS

MODESS REGULAR PKG. **45^c**

PINE

LESTOIL 28 OZ. BOT. **89^c**

KON TIKI

SALAD SHRIMP 4 3/8 OZ. TIN **49^c**

WAGSTAFFE

JAMS and JELLIES 2 9 OZ. JARS **45^c** CASE **2.49**

CLOVER FARM

CATSUP 2 11 OZ. BOTS. **41^c**



ITS GOTT TO BE GOOD
 Cott Non Returnable Bottle

Beverages

3 30 OZ. BOTS. **69^c**

ROYAL INSTANT

PUDDING

3 PKGS. **47^c**

GARDEN PATCH WHOLE

Kernel Corn 2 14 OZ. TINS **35^c**

AYLMER

Whole Beets 2 20 OZ. TINS **43^c**

B AND D SATIN MIX, MINTIES, OR

Humbugs 14 OZ. PKG. **29^c**

WAGSTAFF CHERRY

Pie Filler 20 OZ. TIN **43^c**

ENO'S

Fruit Salts REG. SIZE **75^c**