

The world's deadliest natural poison is found in the kokoi frog of Colombia.

First aid kit is essential

An idea that summer vacationers have found useful is to create their own portable first-aid stations. The concept here of course, is that the whole family should be prepared for the aches, pains and other discomforts and maladies that too often go hand-in-hand with vigorous outdoor activity. The typical first-aid kit should contain bandages, gauze, iodine, and lotions to soothe insect bites or to comfort the over-exposed sun worshipper. If a camping trip is planned, consideration should be given to including snake-bite antivenom.

For relief from all manner of minor aches and pains, there is even a new sustained-release aspirin, Measurin, designed to provide prolonged pain relief for up to eight hours. It, too, is a handy thing to have along in the portable first-aid kit since one dose of two tablets can insure uninterrupted pain relief for the equivalent of a full day's activities in the country, on the shore, or looking at the sights. The portable first aid kit is practical, simple to assemble and need not be bulky. If it is about all one requires will fit easily into the car glove compartment or a corner of a family suitcase.

MILLERY HOUSE
Flat River

Situated on Trans Canada Highway, 7 miles from Wood Islands ferry on way to Charlottetown. Tourist accommodation at very reasonable rates. Specializing in Lobster and Angus Steaks. Open to non-residents 7:00 a.m. - 10:00 p.m. Write for brochure or telephone Eldon 34 Ring 3.
Mrs. C. N. Jeffery

COMMERCIAL PRINTING

Let us design your letterheads, bill heads, brochures; call us for all your printing needs.

GUARDIAN-PATRIOT CENTRAL PRINTERY
PHONE 4-8506



Equipment sales rise

OTTAWA (CP)—Farm equipment sales in the first quarter of 1966 were \$40,446,000, an increase of 19.4 per cent over figures for the first quarter of 1965, the Dominion Bureau of Statistics reported today. Sales

of repair parts rose 17.7 per cent to \$12,835,000.

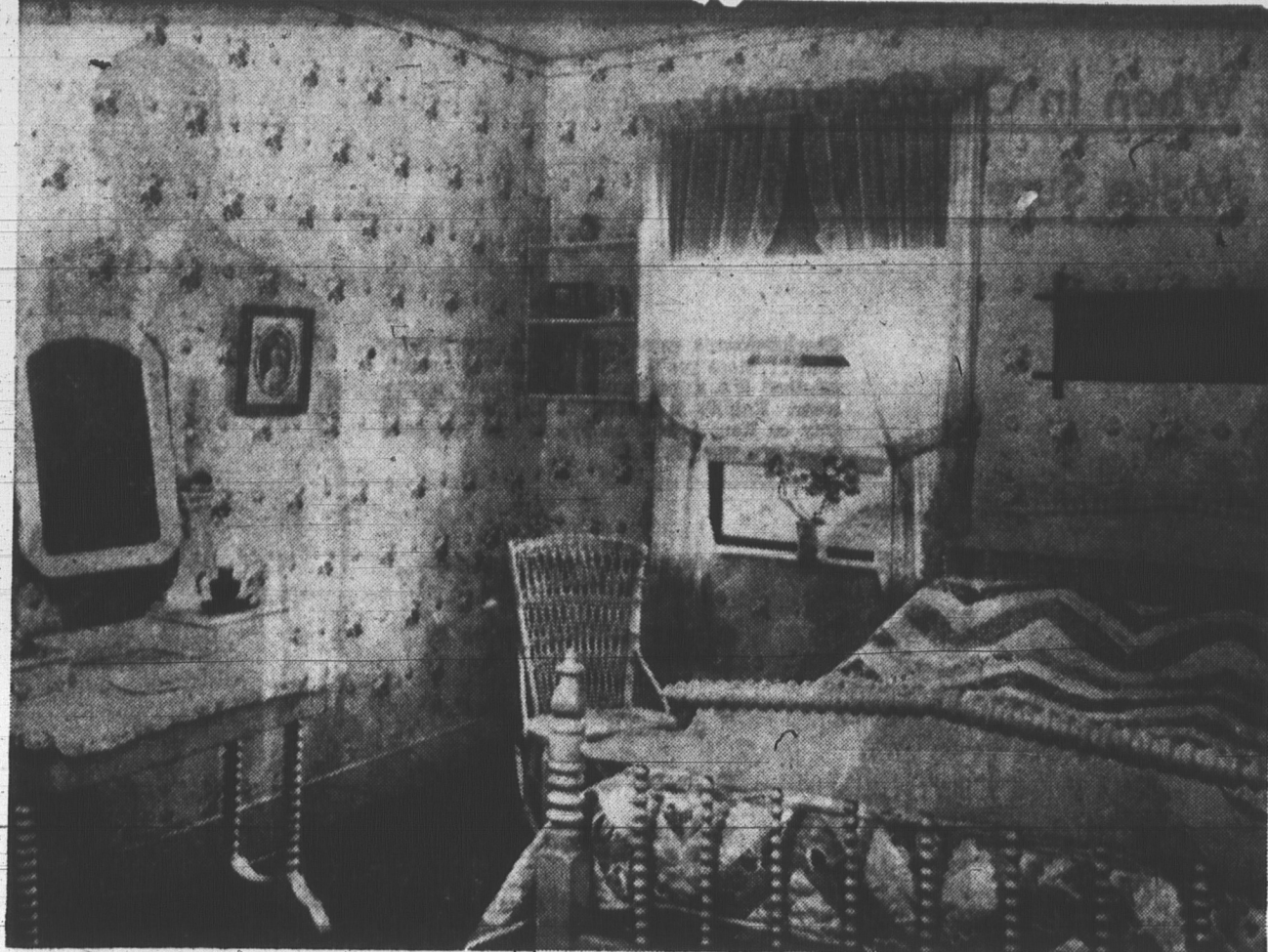
Birth rate decreases

OTTAWA (CP)—Births registered during April totalled 29,896, a drop of 14.9 per cent from the 35,107 registered in the

same month last year. The Dominion Bureau of Statistics also reported today that marriages in the month were 8,221, up from 7,068 a year earlier. Deaths rose to 13,178 from 11,383.

FUMBLER WAS COACH

Bob Denver, the bumbling star of Gilligan's Island, coached football, basketball and baseball when he was a teacher in California.



"GREEN GABLES" the home around which the Anne series of books written by Lucy Maud Montgomery is now one of the leading tourist attractions in the Maritimes, visited by thousands of tourists and Islanders every summer. The house still retains its old-world appeal with fur-

nishings and located in one of the most beautiful settings in the Cavendish district. Above is shown the bedroom of Anne exactly as it was at the time of her residence, and LEFT is an exterior view of "Green Gables."

Author's homes are tourist must

The birthplace of Lucy Maud Montgomery, famed authoress of "Ann of Green Gables", is in the village of Clifton, in New London, half way between Kensington and Green Gables, in the national park.

She was born in the house to Hugh John Montgomery and his wife Clara Woolner MacNeill in November 30, 1874. Because of her mother's illness, she was taken as a child to the MacNeill homestead in Cavendish and

brought up there by her grandparents. Miss Montgomery's birthplace was owned for several years by industrialist K. C. Irving of Saint John, N. B., who deeded the property to the province of P. E. I. in 1964. The building was restored by the special projects committee of the Centennial Committee and a trust has been set up to maintain the house.

"The Story Girl", Miss Montgomery's favorite of her own books, tells the story of the blue chest of Rachel Ward, which was kept locked at all times. The blue chest is at the house in Clifton, along with the wedding dress of the unfortunate Rachel. The dress was among the contents of the blue chest, which has only recently been unlocked.

Other interesting items to be seen at the house are a Franklin stove and an organ belonging to one of the Montgomery family. The birthplace is open daily 10 a. m. to 8 p. m., from June through September.

GREEN GABLES
The famous Green Gables home in which Miss Montgomery was brought up is in Cavendish, in the P. E. I. National Park, only a few miles from her birthplace in Clifton. In Green Gables the parlor and the old organ are in the same place as they were when school-teacher and writer Montgomery was creating the memorable redhead of her most famous novels. Ann's Haunted Woods, Lovers' Lane, Shining Lake and many other products of her imagination can be seen on the property. Others are perpetuated by the names given the various holes on the 18-hole golf course covering the fields that were there when Miss Montgomery was a girl.

The Rogers Hardware Co. Ltd.



Welcome To The Cradle Of Confederation

Yes, and we hope too, that your visit to Charlottetown will include a stop at our store - - - we are proud of our up-to-date gift shop. If you are gift buying for yourself or for friends at home, our staff will be happy to assist you with your selection.

Royal Doulton Figurine



Choose from best known and most loved figurines . . . by Royal Doulton . . . a treasured memento of your Island visit.

Priced from **10.50** and up

Prince Edward Island Provincial Flower

DINNERWARE

'Lady's Slipper Orchid'

Beautiful Adderley Bone China dinnerware . . . dinner plates, cups and saucers, tea plates, bread and butters, and assorted fancies. See this new selection of "Lady Slipper" dinnerware!

We Are Located Opposite The Father of Confederation Memorial Centre



In Fine Bone China Florals

See this new selection of Adderley Florals in fine Bone China, now in beautiful P.E.I. "Lady Slipper Orchid"

Priced From **2.25** and up

Hundreds of other items available for your memento of your Island visit.

THE **Rogers** HARDWARE CO., LTD.

"If it's hardware... we have it!"

P.E.I.'s Most Up To Date Gift Store

QUEEN & GRAFTON—TELEPHONE 894-8501



Picnic Pleasers for the Outdoor Eating Set!

Available Every Day At **GAUDET'S SAVE-EASY**

We Welcome Tourists To Prince Edward Island!

Enjoy food savings on all your picnic food when visiting Prince Edward Island. Islanders find that you get more for less money and you will agree with them after your first visit.

- Fresh meats of all type
- Top quality fruits
- Daily Fresh Bread and Pastries
- Fresh Island vegetables
- Large section of frozen foods

FREE PARKING FOR 140 CARS

GAUDET'S SAVE-EASY

Granville Street North

Summerside