

### Three Squadrons Of CF-104 Reported Modified Overseas

OTTAWA (CP)—The RCAF said Friday it shipped three squadrons of CF-104 low-level jet bombers to Europe before the planes were combat ready.

The first CF-104s for the RCAF Air Division in Europe, now based at Zweibrücken, West Germany, required some 40 modifications.

"Second and subsequent squadrons will form and be ready in accordance with planned dates."

One of the modifications, officers at Zweibrücken said recently is the installation of the CF-104 of a more powerful cartridge in the ejection seat, the means by which a pilot blown free from the bomber in an emergency.

Asked about the need for the modifications in Europe, the RCAF said in a statement, approved by Defence Minister Churchill's office.

"To ensure that CF-104 aircraft were available in Europe in time to meet planned commitments, very careful scheduling of aircraft deliveries from Canada was necessary."

"The schedule demanded that aircraft for the first squadron be sent overseas with some modifications still to be done and that these be installed by RCAF personnel in Zweibrücken, assisted by a mobile repair party from Scottish Aviation Limited."

"Aircraft for the second squadron will have reached a higher modification level before leaving Canada and will require the installation of relatively few modifications."

Aircraft for the third squadron will require even fewer modifications and it is expected that aircraft for the fourth and subsequent four squadrons will be combat-ready before leaving Canada.

The statement said CF-104s in the first squadron in Europe will be completely modified by the end of March and that

### 83 CHARGES, PLEADS GUILTY

TORONTO (CP)—The court clerk started reading the charges against Robert Ehey, 34, thirty-four minutes after he was finished. The 25-year-old man then pleaded guilty Thursday to 83 charges of breaking and entering, robbery, possession of stolen goods, passing bad cheques and possession of narcotic.

Ehey was remanded for sentence.

### Wheat Sale To Czechs Announced

REGINA (CP)—Agriculture Minister Hamilton has announced the sale of 120,000 metric tons of Canadian wheat to Communist Czechoslovakia.

"This is the equivalent of slightly more than 4,000,000 bushels and we expect to have moving from Canada through the St. Lawrence Seaway system shortly after April 10," Mr. Hamilton said.

### Two Children Die In Blaze

EASTVIEW, Ont. (CP)—Two small children were suffocated Friday when a minor fire broke out in the upstairs room of a frame home in this Ottawa suburb. Two others escaped unhurt.

The bodies of Claudette Beauchamp, 4, and Richard, 7, were found in the smokel-filled room by firemen. Two older sisters managed to reach a stairway.

The mother, Mrs. Ovila Beauchamp, was unable to reach the children. The husband was at work.

**CFCY-TV**  
**TUESDAY**  
**NIGHT**  
**6.25 - 6.30**

"Modifications being carried out are not of such a nature as to preclude the use of aircraft for flying training," the statement said.

The RCAF declined to give the cost of the modification program. The entire CF-104 program—200 planes plus 22 training versions—was previously given by defence department officials as \$450,000,000.

## Holman's of P.E.I.

### Air Step.

... The Most Comfortable Shoe You've Ever Worn

# SOF-SOLES

Air Step has literally turned fashion upside down! The vinyl outsole is invisibly cushioned with five comfort layers for soft-stepping luxury. Absolutely water proof and scuff resistant, SOF-SOLE is a modern day platform without the bulk, weight or stiffness of the ordinary platform. Choose your favorite today from these Air Step fashion delights in footwear.

(A) the popular "BERMUDA"

In widths AA, sizes 6 1/2 to 9, and width B in sizes 5 1/2 to 9, in antique brown and bone.

15.95

(B) the new-for-Spring "JAMAICA"

... also in lovely antique brown and bone; width AA in sizes 6 1/2 to 9, and width B in sizes 5 1/2 to 9.

15.95

(C) the smart and comfortable "RADCLIFF"

... in attractive shades of lariat and antique bone... width AA in sizes 6 1/2 to 9, and width B in sizes 5 1/2 to 9.

14.95

AND fine style and fashion "THE GLENDALE"

... this style footwear feature by Air Step comes in lovely honey stone color... width AA in sizes 6 1/2 to 9, and width B in sizes 5 1/2 to 9.

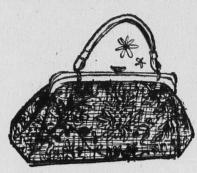
14.95 (Not Illustrated)

## Holman's of P.E.I.

# it's fashion time at Holman's . . . .

. . . and with the coming of Spring and Easter, our fashion selections are at their peak! We invite you to drop in soon . . . choose your special fashion ensembles for the Easter season . . . from the newest, smartest, most colorful selections we have ever offered!

### beautiful tapestry handbags



by "Julius Resnick"

... beautifully designed of tapestry with imitation leather handle. Bound with imitation leather, these purses are a gay accessory for Spring and Easter. In lovely beige shade, beautifully styled to match most Spring ensembles.

**5.95**

### gloves and scarves

... by Kayser

Hard wearing nylon suede gloves with attractive floral swirl in lovely shades of Columbia blue, pink, beige, green agathe, black and white. Washable nylon tricot scarf to match in same design and shades.

gloves **2.59**  
scarves **1.98**

### jewellery by Coro

adjustable long rope of poppet beads in brilliant colors for Spring and Easter . . . "Coro's" new long rope beads in white, beige and lovely pastels.

**1.00** each

### "Jonathan Logan" dress jackets

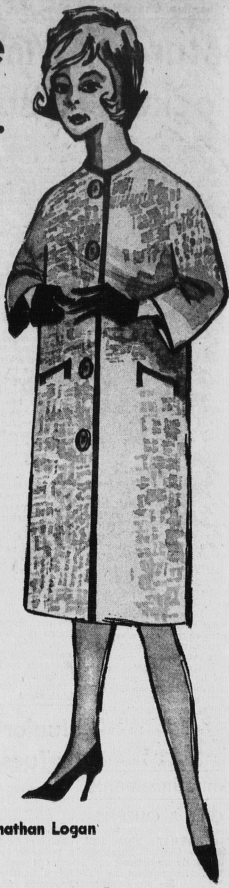
100% washable terylene jersey for easy care . . . Bolero neck with elbow length sleeves. Worn over dress with dramatic scoop neckline. Full skirt. Jonathan Logan's vividly beautiful terylene prints in gold and blue. Sizes are 9 to 13.

**25.00**

### wool boucle spring coats

Wide tailored reverse, deep set raglan sleeve in three-quarter length style, double breasted coats with fancy pocket line . . . beautifully slim fitting, in boucle tweed by "Wilson". Colors are gold and mint . . . sizes are 8 to 14.

**59.95**



### sheath dresses

in washable arnel denim. Slim fitting sheath with jewel neck, raglan short sleeves and two hands saddle stitching around the skirt. Four buttons adorn front for decoration only. Leather belt. Available in grey and beige for Spring, sizes 9 to 15.

**16.95**

### Girls' "Black Watch" Reversible Coats



(A) featuring:

- extra hem allowance
- extra sleeve length
- detachable hood
- two flap pockets
- 4 buttons
- reverse to beige
- sizes 7-8-10-12

**19.98**

### Girls' laminated denim coats

(B) style for spring with the Gain a size—Touch N' grow feature for growing girls. Wide half belt, side slit pockets, raglan sleeves—walking pleat in back. Full rayon lining. Colors, blue, pink, green. Sizes 8-10-12-Teen.

**29.98**

### Girls' Double Knit Suits

(B) Girls' Double Knit Suits of pure botany wool featuring knife pleated skirt. White braid trim on collar—sleeves and muck pockets. White pearl buttons—Peter Pan Collar. Sizes 4-6-8.

**12.95**

Sizes 7-8-10-12-14 Price **17.95**

### Girls' Straw Hats

Straws for the little miss in sailors, clothes, brotons in all spring colors. Trimmed with matching rayon taffeta bands and streamers.

**1.98-3.98**

### Girls' Hand and Shoulder Bags

All leather hand and shoulder bags to accentuate the wardrobe. In matching styles and colors.

**79¢ - 1.49**

**IRA LEWIS**  
Liberal Candidate in Queens  
P.E.I. Liberal Assn.

Holman's are pleased to present a "Ladies' Fashion Show" in our 2nd floor furniture department, Charlottetown, on Friday, March 29th . . . and in our 2nd floor department, Summerside, on April 5th. No admission charge; valuable door prizes. Tickets may be picked up in our ladies' wear departments in each store. Three one-hour shows each date: 1st show at 2:30 p.m. . . . 2nd show at 4:00 p.m. . . . 3rd show at 7:00 p.m.

Holman's are pleased to present a "Ladies' Fashion Show" . . . in our 3rd floor furniture department, Charlottetown, on Friday, March 29th . . . and in our 2nd floor department, Summerside, on April 5th. No admission charge; valuable door prizes. Tickets may be picked up in our ladies' wear departments in each store. Three one-hour shows each date: 1st show at 2:30 p.m. . . . 2nd show at 4:00 p.m. . . . 3rd show at 7:00 p.m.