

# History Indicates Embargo Of Cuba Will Be Fruitless

By **REM PRICE**  
WASHINGTON (AP) — The United States is seeking the downfall of Communist Cuba by an economic embargo—and it won't work if history is indicative.

As matters now stand, the U.S. effort to seal off Cuba from world trade has more holes in it than a colander.

Almost nobody, including some of its best friends, is supporting the United States policy on Cuban trade.

The alternative to embargo is, of course, a blockade enforced by U.S. guns, missiles, aircraft and torpedoes.

In the past, however, the U.S. has insisted that a blockade is an act of war. And outright war with Cuba is something the United States is trying to avoid, especially since Cuba is allied with the Soviet Union.

About the only success the United States has had against Cuba occurred in October and November 1962, when it introduced a variant of the blockade and called it a "quarantine."

That was a blockade against specific cargoes—in this case missiles. After the quarantine declaration, 12 Soviet ships turned back to Russia rather than test this nation's determination.

An embargo is so dehumiliating by the U.S. can be effective only if all nations stop delivering goods to Cuba.

Clearly the Communist bloc has no such intention and neither does a large part of the non-Communist world—England, France, Mexico, Spain,

Canada and Morocco among others.

**LIFE HARDER**  
What the U.S. policy does do, however, is to make life more difficult and expensive for the Cubans.

And, as U.S. State Undersecretary George Ball has noted, it does bring about a drain on the economic reserves of the Communist nations, chiefly the Soviet Union which is pledged to Cuban support.

At the same time, however, the U.S. policy penalizes other friendly nations by laying down the rule that ships which have delivered cargoes to Cuba can not stop in any U.S. port for another cargo to take back home.

It also forbids the use of U.S. ports to all ships of a nation which delivers arms to Cuba.

Under U.S. law, the United States is obliged to shut off aid to nations which trade with Cuba—unless the president declares such an act might injure this nation more than it helps.

As a result, the United States has cut off numerous amounts of military aid to Great Britain, France and Yugoslavia, while freezing aid at the current levels to Spain and Morocco for "re-examination of their Cuban trade policies."

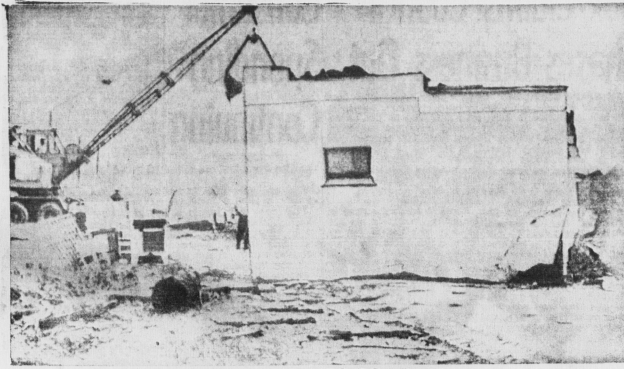
Twice in history the United States—or the colonies which became the United States—have tried this embargo routine without success, once prior to the American Revolution and once just before the war of 1812.

**FIRST FISH SALES**  
LISBON (AP) — Fish from South African waters have gone on sale in Lisbon shops. Due to shortages elsewhere, Portuguese fishing vessels turned experimentally to the far south last October and now have delivered the first frozen products.

HAMILTON, Ont. (CP) — The Hamilton District Officers' Institute, Tuesday officially adopted the Red Ensign as Canada's national flag. The 1,000-member organization of former service officers, which includes Prime Minister Lester Pearson, Ontario Premier John Roberts and Liberal MP John Morison, urged the Canadian government to do likewise.

**ROYAL SECURITIES**  
Corporation Limited  
Stocks and Bonds  
**ALEX M. WILSON**  
Manager  
137 Grafton St. Dial 4-6383  
Charlottetown

**PURITY DAIRY**  
"Parents Prefer Purity Products"  
317 Kent Dial 4-7123



### WAVE LIFTS HOUSE INTO ROAD

Cleanup work continues at Crescent City, in California which was hard hit by a tidal wave resulting from the Alaska

earthquake Good Friday. This house was lifted from its foundation and deposited on highway. In background a crane is clearing other debris. Damage was estimated to exceed \$10

million in this city. At least 10 persons were drowned and 15 more are missing.

## Tires Equipped With Studs Praised For Winter Driving

**HALIFAX (CP)** — Tires equipped with spikes or studs to give better traction on ice or snow are the tires of the future, says Hans Larsson, president of Volvo (Canada) Ltd.

Mr. Larsson says the spiked tires are being tested by Volvo and that his personal car has been equipped with them. He says he has never become stuck since he began using them.

Tires fitted with carbon or tungsten spikes are used extensively for winter driving in Scandinavian countries and recently a company in Toronto began fitting the spikes to tires.

Mr. Larsson says that although the spiked tires are expensive in Canada, their price should drop as they become more widely used and production increases.

At present in Canada, the spikes, which can be fitted to most tires, cost 11 cents each, including installation. As many as from 120 to 400 spikes are used in each tire, depending on the size and weight of the car for which they are used and the amount of traction desired.

The wear rate of the spikes on dry roads is about the same as for the rubber in the tire.

Mr. Larsson says the Volvo assembly plant at nearby Dartmouth will begin turning out the P1541 model in June. Currently, the plant is producing the two and four-door Canadian models of the Volvo station wagon. The P1541 model resembles a 1959 Ford.

## Mrs. Kennedy Picks Author To Do Assassination Story

WASHINGTON (AP) — Mrs. John F. Kennedy has chosen the author to write what she hopes will be the authoritative story of the assassination of her president husband.

And the famous widow will search her memory of those black November days to help him.

It is William Manchester of Middletown, Conn., whose Portrait of a President in an impressed the first lady when Kennedy was alive that she asked him to chronicle the events surrounding Kennedy's death Nov. 22.

An announcement from the Kennedy family said:

"Because versions of what occurred Nov. 20-25, already have appeared and because it is understood other articles and books are in the course of being prepared for later publication, these arrangements were made with Mr. Manchester in the interest of historical accuracy and in prevent distortion and sensationalism."

"I have mixed feelings about this," Manchester told reporters Thursday. "It's an honor and a privilege and a solemn responsibility. But I don't think anyone who remembers the anguish of those days will want to relive them."

He has taken indefinite leave from Westland, where he is managing editor of the Westland University Press.

Beside the Kennedy book, he has published biographies of H. J. Mencken and the Rockefeller family, and four novels.

**YORK**  
Mr. and Mrs. Hazel Howard-Cornwall were the guests of Mr. and Mrs. Harry Lewis, York on Sunday, March 29th.

Mr. and Mrs. Cecil Wairs, York, were the guests of Mr. and Mrs. Fred Courts Danderton on Sunday, March 29th.

Mrs. Franklin Lewis, York, spent Sunday at Ellerslie, the guest of her parents, Mr. and Mrs. Robert Millar.

Mr. and Mrs. Raymond Watts and family were recent visitors to Charlottetown.

Mr. and Mrs. Hubert Simpson-Bayview, spent Sunday in York at the home of Mrs. Simpson's parents, Mr. and Mrs. Harry Lewis.

**DRESSES**  
• cotton  
• linens  
• silks  
Sizes 7 - 18  
8 - 20,  
14½ - 26½  
Priced from  
8.95 to  
29.95

**Gloria Ladies' Wear**  
135 Gt. George St., Ch'town

**Effective March 30th**

**NEW LCL BENEFITS FOR CN SHIPPERS**

**IMPROVED LCL PLAN**  
Most of the less-than-carload lots shipped between all CN stations in New Brunswick, Nova Scotia and Prince Edward Island are eligible for CN's new improved LCL plan.

**NEW ONE COMMODITY RATE**  
Commodity classifications are virtually eliminated. Now one rate scale applies to most commodities. You can mix various merchandise in your shipments—and one simple rate scale applies.

**NEW WEIGHT CATEGORY**  
Special new 2,000 lbs. minimum is added to the existing 500, 750, 5,000 and 10,000 and over minimum weights categories.

**CONVENIENT PICK-UP AND DELIVERY SERVICE**  
Of course, the convenient Canadian National pick-up and delivery arrangements will be fully maintained.

For the actual details that apply to your shipments, please call your local CN agent or sales representative.

**EXPRESS FREIGHT WAY IS THE LOW RATE WAY**

Moore & McLeod Ltd. ladies wear—second floor

**OPEN TODAY 9-5 p.m.**

*Spring*

**DRESSES**

Soft new lines of Spring in fitted sheath styles... flattering shifts... two and three piece ensembles... jumper styles... in the season's favorite patterns, pulka dots and florals. Nylon, linens, crepes, waffle cottons and many other new fabrics! Call us today!

Petites to Generous Sizes

**\$8.95 - \$55.00**

**ON THE ISLAND IT'S MOORE & MCLEOD LTD.**

"YOUR FAVORITE SHOPPING CENTRE"

**SIMPSONS-SEARS PRE-MOVING CLEARANCE SALE!**

**5 GREAT SALE DAYS — TUESDAY TO FRIDAY**

**STORE-WIDE DISCOUNTS FROM 10% to 60%**

Opening announcement of our new store at 156 Kent St. will be made shortly. Our new store will be merchandised with fresh new stock, therefore all our present floor samples have been sharply reduced. All floor samples must be sold so shop early for best selection of chesterfield suites, bedroom suites, kitchen suites, chairs, appliances, television, radios, carpets, bedding, sporting goods, bathroom fixtures, floor covering plus many other items.

**All Merchandise Available On Our Easy Payment Plan with No Down Payment**

**SIMPSONS-SEARS** 208 Prince Street Phone 2-1251

**CN**

**NEW LCL BENEFITS FOR CN SHIPPERS**

**IMPROVED LCL PLAN**  
Most of the less-than-carload lots shipped between all CN stations in New Brunswick, Nova Scotia and Prince Edward Island are eligible for CN's new improved LCL plan.

**NEW ONE COMMODITY RATE**  
Commodity classifications are virtually eliminated. Now one rate scale applies to most commodities. You can mix various merchandise in your shipments—and one simple rate scale applies.

**NEW WEIGHT CATEGORY**  
Special new 2,000 lbs. minimum is added to the existing 500, 750, 5,000 and 10,000 and over minimum weights categories.

**CONVENIENT PICK-UP AND DELIVERY SERVICE**  
Of course, the convenient Canadian National pick-up and delivery arrangements will be fully maintained.

For the actual details that apply to your shipments, please call your local CN agent or sales representative.

**EXPRESS FREIGHT WAY IS THE LOW RATE WAY**