

CHURCHES

(Continued from page 11)

Week Good Friday Service in Cavendish United Church. Baptism and Confirmation class Thursday, March 31 at 7.30 p.m. Session meeting April 4 in CE Hall at 8.30 p.m. Rev. Frank B. Stiles, minister.

WINSLOE United Pastoral Charge. Combined Worship and Sunday School at Highfield 11.00 a.m. Princetown Road 2.30 p.m. Winsloe North 7.30 p.m. Rev. T. R. Goudge, minister.

VALLEYFIELD — Orwell Head — Belle River, the United Church. Rev. Graeme M. Fraser, minister. Sunday, April 3. Worship: Belle River, 9.30 a.m. Orwell Head 11.15 a.m. Valleyfield 7.30 p.m.

NEW LONDON Pastoral Charge, the Presbyterian Church. Men's Study Friday, April 1 at 8 p.m. at the manse. Sunday, April 3. Geddie Memorial 11 a.m. Long River 2.30 p.m. New London 7.30 p.m. Rev. L.R. Files, minister.

BRADALBANE PASTORAL Charge, the United Church. Sunday, April 3. Bradalbane 11.00 a.m. Pleasant Valley 1.30 p.m. North Granville 7.45 p.m. Special choir at North Granville. Rev. William E. Hare, B.A., B.D., minister.

MARGATE United Church Pastoral Charge. Sunday, April 3. Long River 11 a.m. New London 2.30 p.m. Margate 7.30 p.m. Rev. W.A. Paterson, M.A., B.D., minister.

THE PRESBYTERIAN Church. Central Parish. Clyde River. Worship 11 a.m. Bible Study and Prayer, Wednesday, April 6 at 8 p.m. Canoe Cove. Worship 3 p.m. Bible Study and Prayer Thursday at 8 p.m. Nine Mile Creek. Worship 7.30 p.m. Bible Study and Prayer Thursday at 8 p.m. Rev. Raymond L. Gillis, minister.

MILTON — Rustico Anglican Parish. Rev. A.E. Piercy, rector. Sunday, April 3. St. John's, Milton. Holy Communion and Sermon 11 a.m. St. Mark's, Rustico. Evening Prayer and Sermon 2.30 p.m.

CHRIST Church. Cherry Valley. Sunday, April 3. Rev. A.E. Piercy, Priest-in-charge. Evening Prayer and Sermon 7.30 p.m.

HAMPTON Pastoral Charge, the United Church. Bonshaw 11 a.m. DeSable 2.30 p.m. Victoria 7.30 p.m. Rev. Bryer R. Jones, minister.

CORNWALL United Church Pastoral Charge. Mr. Roydon Reynolds, minister. Sunday, April 3. Worship: Cornwall 11.15 a.m. Kingston 3 p.m. New Dominion 7.30 p.m. Sunday School at Cornwall 10 a.m.

NORTH RIVER Baptist Pastorate. Sunday, April 3. Rev. T. W. Howard, minister. Worship: Long Creek 11 a.m. Clyde River 3 p.m. Kingston 7.30 p.m. Sunday School at Clyde River 2 p.m.

ANGLICAN Church. Crapaud and Springfield. St. John's, Crapaud. Holy Communion 11 a.m. Lenten Service Wednesday at 8 p.m. St. Elizabeth's, Springfield. Evening Prayer 2.30 p.m. Rev. Michael R. Ness, rector.

FREDERICTON and Bradalbane Churches of Christ. Bible School 10 a.m. Combined Worship at Fredericton 11 a.m. Cavendish Baptist Church. Worship 2.30 p.m. New Glasgow Christian Church. Bible School 10 a.m. Worship 7.30 p.m. Mr. Merle Zimmerman, minister.

FREE CHURCH of Scotland. Worship: DeSable 11 a.m. Mr. David Compton will conduct the service. Rev. Ewen E. MacDougall, interim-moderator.

MT. HERBERT United Church. Sunday, April 3. Confirmation Class 2.30 p.m. Worship 7.30 p.m. Rev. John G.E. Ball, minister.

CROSS ROADS Christian Church. Sunday, April 3. Worship 3 p.m. Rev. D.L. Howlett, minister.

MARSHFIELD — Harrington — Mt. Stewart Pastoral Charge, the Presbyterian Church. Mt. Stewart: Worship 11 a.m. Church School 10.15 a.m. Harrington 2.00 p.m. Marshfield 7.30 p.m. Harrington Youth Choir, Tuesday 6.15 p.m. YPS 7 p.m. Adult Bible Class 8.15 p.m. COC and Explorers Saturday 2 p.m. Marshfield Junior Hi Friday 7 p.m. Senior Hi Saturday 7 p.m. Mt. Stewart Junior Hi Friday 8.30 p.m. Mr. Hugh Lowry, Catechist. Rev. D.A. Campbell, interim-moderator.

MT. STEWART — St. Peter's Bay Charge, the United Church. Sunday, April 3. Mt. Stewart: Worship 11.15 a.m. Reception of (Continued on page 28)



Courtesy Reigns at...



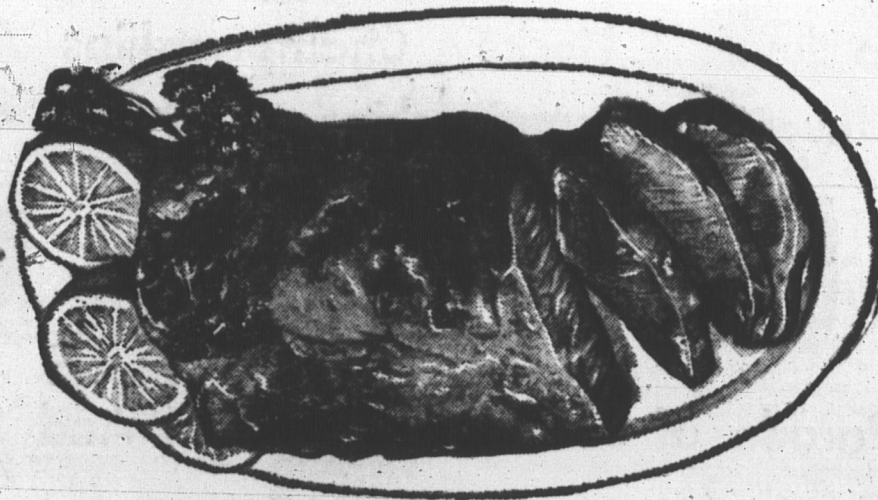
THE FRIENDLY FOLKS AT CLOVER FARM RATE COURTEOUS SERVICE VERY HIGH. FOR THE BEST IN QUALITY FOODS AND SERVICE... THE LOWEST PRICES IN TOWN... COME SEE US!

FROZEN FOODS

- | | | |
|-------------------------------------|------------|-----|
| HIGHLINER
HADDOCK FILLETS | 1 LB. PKG. | 49c |
| McCAINS
FRENCH FRIES | 2 OZ. PKG. | 19c |

P.E.I. SHOULDER ROASTING

PORK
55^c



GRANULATED
SUGAR
10 LBS. **85^c**

REAL LEAN PORK STEAK

LB. **59^c**

JOHNSTON'S HOME STYLE
POTTED MEAT 12 OZ. TUB **43c**

REAL LEAN GROUND BEEF LB. **59c**

SUPER PORK SAUSAGE 1 LB. PKG. **63c**

SWEET PICKLED NECK RIBS 3 LBS. **55c**

WHITE SWAN TOILET
TISSUE
8 LBS. **1.00**

DEVON SLICED BACON

OUR OWN SLICING LB. **69^c**

LB. **59^c**
LB. **69^c**

MIX 'EM MATCH 'EM

KELLOGG'S
CORN FLAKES 12 OZ. Your Choice
SPECIAL "K" 6 1/2 OZ. **3 FOR 1.00**
RICE KRISPIES 10 OZ.

PRINCE EDWARD
Chicken Haddie 15 OZ. TIN **33c**

PRINCE EDWARD
Mackerel 15 OZ. TIN **25c**

GREEN GIANT KERNEL
Corn Niblets 2 14 OZ. TINS **43c**

CLOVER FARM ORANGE
Marmalade 24 OZ. JAR **45c**

PROCTER & GAMBLE
Spic & Span LGE. SIZE **49c**

COTTON
Wet Mops 6 OZ. **55c**

JACK & JILL OR BUCKLEYS
Cough Syrup BOT. **65c**

FARM KIST
Prunes 1 LB. BAG **33c**

CLOVER FARM
Table Syrup 16 OZ. BOT. **35c**

McCORMICKS
Scotch Mints 1 LB. BAG **39c**

CLOVER FARM—20 OZ.
Cream Corn 2 TINS **43c**

BAD'S OATMEAL
Cookies 2 PKGS. **49c**



CADBURY'S
CHOCO 2 LB. TIN **69^c**

CLOVER FARM
TEA BAGS 60's GAUZE **85^c**

PETER PAN
PEACHES 4 15 OZ. TINS **89^c**

CLOVER FARM TOMATO
JUICE 48 OZ. TIN **35^c**

WHITE SWAN PAPER
TOWELS 2 ROLLS **49^c**

WHITE SWAN
SERVIENTTES 3 PKGS. **50^c**

AJAX
CLEANSER 2 TINS **43^c**

Sale Prices

Effective

'Til

Closing

Time

April

2nd



Garden Fresh
PRODUCE

SWEET JUICY SUNKIST
ORANGES SIZE 138 DOZ. **49c**

VINE RIPENED
TOMATOES LB. **29c**

NO. 1 CANADIAN
ONIONS 2 LBS. **19c**

LARGE JUICY
LEMONS 4 FOR **25c**

"HELP CRIPPLED CHILDREN - BUY EASTER SEALS"



Let us design your letterheads, bill heads, brochures, call us for all your printing needs.

GUARDIAN-PATRIOT
CENTRAL PRINTERY
PHONE 4-8506