

TIMELY NOTES ON TOPICS CONNECTED WITH Silver Fox And Mink Farming

At Anning, Chadwick & Kie... mink advanced 10% and ranch mink advanced 10%. These two furs commanded most interest in what was otherwise a fairly dull sale.

The Quebec Fish and Game Department announces that a plan enforced in 1932 to prevent extinction of beavers is beginning to pay off. Quebec's beaver population reached 150,000 this year.

Hon. D. Camille Pouliot, Quebec game minister, said recently the government action has stabilized the beaver population to increase. Sale of the skins through the Quebec game department will yield \$19 per unit to the trappers.

Women's Wear Daily has a short article entitled "In Mid-Season Collection" which is the final paragraph... "Fox, particularly in the new Norwegian blue mutations, is prominently spotlighted throughout the collection as a trimming or shaped into stoles."

In one of the latest issues of Women's Wear Daily are photo reproductions of young lady models wearing furs made up of Golden Glory Fox, the new golden mutation which is being introduced by Fromm Bros. and was described in our previous notes.

-NEWSY NOTES-

By J. A. Clark, D.Sc. ATOMIC ENERGY.

Atomic energy is produced by nuclear reaction and is more correctly called nuclear energy. While it is true that science has only recently developed means to release some of what appears to be almost unlimited power that has been tied up in the atom, yet nuclear energy has always existed since the foundation of the Universe.

Nuclear energy, produced by the process of nuclear reaction, is the only logical explanation, so far advanced, concerning the continuous outpouring of heat from the sun through all time. Any other source of heat known to man would have been exhausted aeons ago.

to continue the sun's heat for 30 billion years.

Every living thing on the earth is completely dependent upon the heat from the sun. It has been and is the every day source of our heat and light. It is heat from the sun that raises water by evaporation from land and sea, and thus forms the clouds.

It has been estimated that it takes millions of years to convert one gram of hydrogen to helium at the temperature now existing on the sun, and that there is enough hydrogen available, at the present rate that energy is being released,

by the radiation of heat from the sun. Thus the power being used today, even manual labour and that produced by horses and cattle, can be traced through food to the sun's rays, which have, so far as we know, their source in atomic energy.

The word atom is from the Greek atomos, "that which cannot be cut" and was used by physicists who denied the infinite divisibility of matter. The birth of the science of chemistry during the 18th and 19th centuries, came as the transition from alchemy, when alchemists had failed in their attempts to transform the base elements into rarer elements.

The winds that move the clouds, and are used to some extent to generate power, are also produced

The initial discoveries that have led to our present knowledge of nuclear energy, were made by Professor Ernest Rutherford at McGill University. He was interested in Becquerel's (France) discovery of radioactivity in 1896; Tompaon's (England) discovery of the electron in 1897; and the famous discovery by the Curies in 1898 of the elements of radium and polonium.

The nature of radioactivity was a mystery in 1900, although a few radioactive elements had been discovered. Rutherford and a McGill chemist, Frederick Soddy, in their work "proved that the entire process of radioactive occurred at a pre-determined rate, spontaneously, but varied in rate with different substances. Temperature, pressure or environment did not affect the rates. The observation of these characteristics convinced Rutherford that a new type of

force had been discovered. In his first published treatise on radioactivity in 1904, he wrote "There is reason to believe that an enormous store of latent energy is resident in the atoms of radioactive elements, energy which is derived from the internal energy of the atoms. If it were ever possible to control the rate of disintegration of the radio elements, an enormous amount of energy could be obtained from a small amount of matter."

His discovery set off a "chain reaction" among scientists, who were playing an interesting new game in competition with Nature. Rutherford went to Manchester University in England in 1907, and there the development of the nuclear concept of the atom took place. It was shown to have a

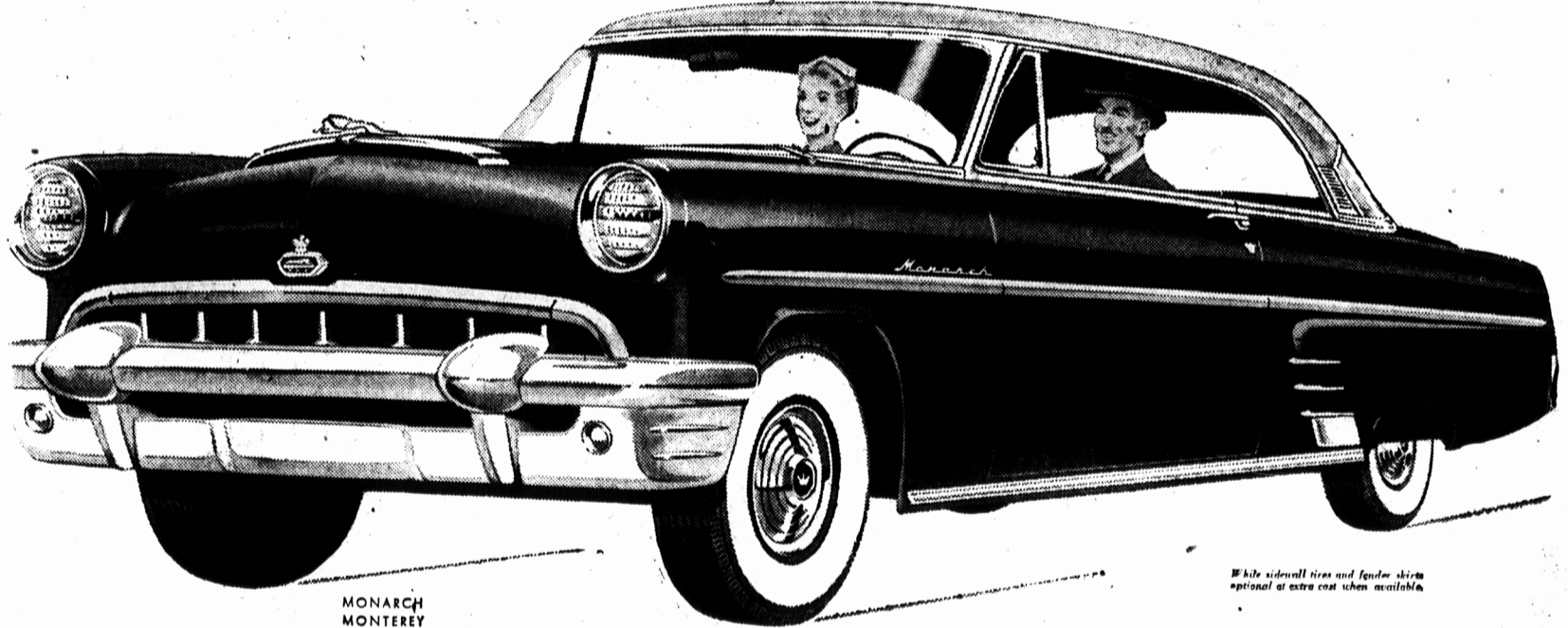
Continued on page 16



People who appreciate fine cars are turning to Monarch.

"My Monarch has all the fine-car features I value most..."

Bob Walker, the manager of the bank that handles our account, is the type of man who takes a long hard look before he makes an investment. Talking of cars the other day, he told me he'd bought a Monarch because it was a car that gave him everything he wanted, including the satisfaction of knowing he'd invested wisely and well in a fine product.



MONARCH MONTEREY

White sidewall tires and lighted skirts optional at extra cost when available.

POWER puts the driver completely at ease

POWER STEERING* Today's most advanced hydraulic system puts power to work to take all effort out of steering, but allows the driver to retain the subtle "feel" of positive road control.

POWER BRAKES* Engine vacuum provides the power for braking action, relieving driver of muscle-strain, adding a new measure of safety and control under all road and driving conditions.

POWER SEAT* Correct positioning of driver with relation to windshield vision and pedal control is achieved instantly at the touch of a switch. Electric power adjusts seat automatically up or down, forward or back.

AUTOMATIC TRANSMISSION* Complete freedom from clutching and hand-shifting with Automatic Transmission in Monarch... the finest, most modern, and versatile transmission of its kind you can buy.

(*Optional at Extra Cost)

Ride like a King in a Monarch V-8

YOUR MONARCH DEALER WILL BE HAPPY TO ARRANGE A DEMONSTRATION AT YOUR CONVENIENCE

McGowan Motors Ford & Monarch Cars Montague Phone 33-21

S. R. Johnston Ltd. Ford - Monarch Dealer St. Peter's Road Phone 3092-3093

MacLean Motors Ltd. Ford - Monarch Dealer Summerside Dial 2257

LOOK FOR THE A-1 SIGN OF VALUE WHEN YOU BUY A USED CAR - SEE YOUR MONARCH DEALER

TIP OF THE WEEK FROM YOUR MASTER DEALERS. List of dealers: Charlottetown L. J. Rossiter, Summerside Prince Edward Island Fur Pool Ltd., O'Leary H. B. Willis Inc., Kensington H. B. Willis Inc., French River Arthur A. Campbell, Central Bedeque Dunk River Dairying Co., Albany L. D. McLeod & Sons, Victoria L. D. McLeod & Sons, Stanley Bridge Reid's Feed Service, Wheatley River Preston Backham, Morell Dingwell & Rossiter, Kilmuir McGowan's Ltd., Mount Stewart Clark's Feed Service.

TIP NO. 7. To control feather picking and cannibalism do not overcrowd. To stop bad cases of picking, "Specs"-Pick Guards or Debeaking may have to be used. Let's Discuss Your Feeding Plan With Your Island's MASTER MAN IVAN KERRY Dial 5455 56 Green St. - Ch'town

FEEDERS WHO KEEP RECORDS USE MASTER