

**RURAL
CHURCHES
KINGS**

MONTAGUE Baptist Pastorate. Rev. A.G.J. Steeves, M.A., BEd., B.D., minister. Sunday, March 6. Montague: Sunday School 10 a.m. Worship 11 a.m. Evensong 7.30 p.m. Murray River: Sunday School 2 p.m. Worship 3.15 p.m. Murray Harbor: Sunday School 1 p.m. Worship 2 p.m. Sturgeon Sunday School 2 p.m. Worship 7.30 p.m.

MURRAY RIVER Pentecostal Church. Sunday School 10 a.m. Worship 11 a.m. and 7.30 p.m. Rev. Fred Day, minister.

MONTAGUE Bible Chapel. The Lord's Supper 9.30 a.m. Sunday School and Adult Bible Class 10.45 a.m. Evening Worship 7.30 p.m.

GEORGETOWN BAPTIST Church. Sunday School 10 a.m. Worship 11 a.m. Gospel Service 7.30 p.m. Rev. Earle Smith, pastor.

UPTON Gospel Chapel. Sunday, March 6. Sunday School 10 a.m. Worship 11 a.m. Gospel Service 7.30 p.m.

GEORGETOWN Holy Trinity Anglican Church. Sunday, March 6. Mattins 11 a.m. Sunday School 10 a.m. Rev. J. Stephen Sherren, rector.

CENTRAL KINGS Pastoral Charge, the United Church. Annandale: Worship 11 a.m. St. David's: Worship 3 p.m. Church School 2 p.m. Dundas: Worship 7.30 p.m. Rev. M.R. Pocklington, minister.

MONTAGUE Pastoral Charge, the Presbyterian Church. St. Andrew's Montague: Church School 10 a.m. Worship 11 a.m. and 7.30 p.m. Communicants' Class 8.30 p.m. Adult Bible Study Wednesday, March 9 at 7.30 p.m. St. Andrew's, Carleton Place: Worship 2.30 p.m. Rev. Basil Lowery, B.A., B.D., minister.

MONTAGUE Pastoral Charge, the United Church. Rev. Russell F. Burns, minister. Sunday, March 6. 9.45 a.m. Lower Montague: 2.30 p.m. Sturgeon 4 p.m. Church membership class in Montague 7.30 p.m. Montague, (Adult study group.)

THE PRESBYTERIAN Church, Sunday, March 6. Peter's Road: Church School 10.00 a.m. Worship 11 a.m. Murray Harbour North: Church School 1.30 p.m. Worship 2.30 p.m. Caledonia: Worship 7.30 p.m. Mr. Lloyd Martin will be guest soloist at the evening service. Rev. M. Carl Currie, minister.

DUNDAS — Annandale United Baptist Pastorate. Dundas: Sunday School 10 a.m. Worship 11 a.m. Communion 12.10 p.m. Annandale: Worship 7.30 p.m. Communion 8.10 p.m. Lge Myrtle Ferguson, pastor.

SOURIS — Bay Fortune United Churches. Sunday, March 6. Worship: Souris 11 a.m. Bay Fortune 7.30 p.m. Rev. F.E. Phinney, minister.

MURRAY HARBOR — Murray River United Church Pastorate. Sunday, March 6. Murray River: Worship 11 a.m. Church School 9.30 a.m. Little Elms: Worship 2 p.m. Murray Harbor: Worship 7 p.m. Church School 9.30 a.m. Rev. David Barwise, minister.

FREE CHURCH of Scotland. Worship: Birch Hill 11 a.m. Bangor 2 p.m. Eelle River 4.30 p.m. Murray River 7.30 p.m. Rev. Ewen E. MacDougall, minister.

QUEENS

NORTH RIVER Baptist Pastorate. Rev. T.W. Howard, minister. Sunday, March 6. Long Creek 11 a.m. Clyde River: Sunday School 3 p.m. Worship 3.00 p.m. Kingston 7.30 p.m.

FREE CHURCH of Scotland. Worship at Stanchel, Sunday, March 6 at 2 p.m. Rev. W.R. Underhay, minister.

BROOKFIELD PASTORAL Charge of the Presbyterian Church. Sunday, March 6. Worship: Hunter River 11 a.m. Brookfield 2.30 p.m. Hartsville 7.30 p.m. Clair MacLeod, student minister. Rev. Basil Lowery, interim-moderator.

HUNTER RIVER Pastoral Charge, the United Church. Sunday, March 6. Worship: Hampshire 10 a.m. North Wiltshire 11 a.m. Hunter River 7.30 p.m. Rev. Donald C. Powell, B.A., B.D., minister.

THE PRESBYTERIAN Church, St. John's, Belfast. Sunday, March 6. Service of Worship (Continued on page 12)

**QUALITY
PRINTING**

Stationery, wedding invitations, invoices, statements and all your job printing requirements. All jobs guaranteed.

**GUARDIAN - PATRIOT
CENTRAL
PRINTERY**
Phone 4-8506

THRIFT PARADE OF

Food Values

SPECIAL PRICES EFFECTIVE TILL CLOSING TIME SATURDAY, MAR. 5

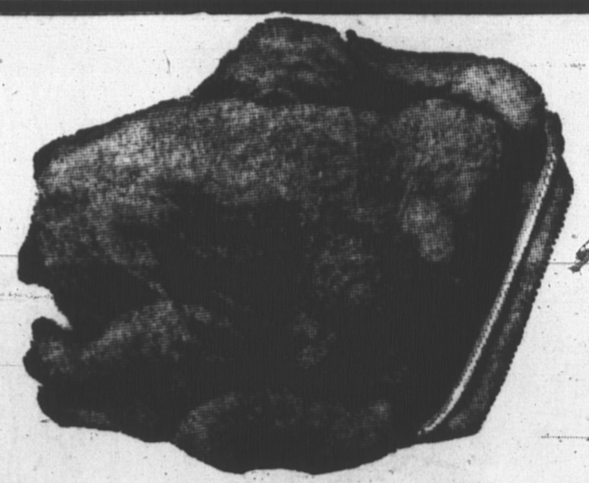
CLOVER FARM

MONARCH QUICK WHIP 10^C
2 OZ. PKG.
(Compare this price with other leading whips).

CLOVER FARM TOMATO JUICE 6 1.00
20 OZ. TINS

FRASER'S (P.E.I.) BONELESS CHICKEN 3 1.00
7 OZ. TINS

GRADE "B" READY CLEANED FOWL 35^C
LB.



MAPLE LEAF BOLOGNA 35^C
LB.

YOUNG, TENDER BEEF LIVER 39^C
LB.

SHANKLESS SMOKED PICNICS 53^C
Whole or Half LB.

SLICED SMOKED PICNICS 59^C
LB.

OUR OWN SLICED BACON 79^C
LB.

LIQUID SUNSHINE JAVEX 27^C
32 OZ. BOT.

ROYAL INSTANT PUDDINGS 2 29^C
PKGS.

BEE HIVE CORN SYRUP 2 35^C
LB. TIN

CARNATION MILK 5 85^C
TALL TINS

MARVENS Mello PUFFS 2 69^C
PKGS.

CLOVER FARM CIGARETTE OR PIPE TOBACCO 1.59
1/2 LB. CONTAINER

BAYERS ASPIRIN 89^C
100's

SLADES TOFFEE 53^C
1 LB. BAG

GOLDEN RUSSET APPLES 43^C
5 LBS.

CRISP, CORELESS CARROTS 2 29^C
LB. BAG

LARGE JUICY LEMONS 4 25^C
FOR

CRISP CRUNCHIE CELERY 19^C
LARGE STALK

FRESH FROZEN SCALLOPS 59^C
12 OZ. PKG.

VALLEY FARM FRENCH FRIES 2 25^C
9 OZ. PKGS.

MIR LIQUID DETERGENT 2 83^C
24 OZ. BOTS.

LIBBY'S GRAPEFRUIT JUICE 49^C
48 OZ. TIN

HEINZ JUNIOR OR STRAINED BABY FOOD 4 45^C
5 OZ. TINS

CLOVER FARM INSTANT COFFEE 89^C
6 OZ. JAR

MONARCH CHOCOLATE, LEMON OR CARAMEL SPONGE PUDDING 2 45^C
FOR

PROCTER & GAMBLE SPIC & SPAN 49^C
LGE. SIZE

MARVENS VARIETY MIX 2 69^C
PKGS.

COLGATE - PALMOLIVE FAB 1.29
KING SIZE



CLOVER FARM

