

CHURCHES

(Continued from page 11)
CORNWALL Pastorate, the United Church—Cornwall 11:00 a.m. Kings on 3 p.m. New Dominion 7:30 p.m. Sunday Schools—Kings on 2 p.m. Cornwall 8:30 p.m. Rev. I.L. Walls, minister.

CROSS ROADS—Hazelbrook Pastorate Services Sunday, May 2. Cross Roads 3 p.m. Hazelbrook 7:30 p.m. Lie Jerry Cole, minister.

VALLEYFIELD—Orwell Head—Belle River, the United Church Rev. Graeme M. Fraser, minister. Belle River 9:30 a.m. Orwell Head 11:15 a.m. Valleyfield 8 p.m.

CAVENDISH Pastoral Charge, the United Church Worship: Stanley Bridge 11 a.m. Cavendish 11 a.m. North Rustico 2:30 p.m. The Cavendish service will be a "Family Sunday Service" parents are invited to bring all Sunday School children. Everyone welcome Rev. Frank B. Stiles, minister.

YORK Pastoral Charge, the United Church Pleasant Grove 8:30 a.m. Central 11 a.m. Brackley Communion 2:30 p.m. York 7:30 p.m. Rev. F.W. Lacey, minister.

PRINCE

KENSINGTON Presbyterian Church Pastoral Charge. Kensington Church 11 a.m. Free-town Church 3 p.m. Keir Memorial, Malpeque 8 p.m. Rev. George R. Tannahill, minister.

TRYON CHARGE, the United Church Sunday, May 2. Sunday Schools: Tryon 11 a.m. Crapaud 11 a.m. Worship: Tryon 9:45 a.m. Cape Traverse 11 a.m. Crapaud 7:30 p.m. Rev. A.H. O'Brien, minister.

ANGLICAN SERVICES, Parish of Port Hill Rev. Delmont Yeo, rector. 2nd Sunday after Easter. New schedule of services 11 a.m. Lot 11 and Inverness at Lot 11. 7:30 p.m. Port Hill and Ellerslie at Ellerslie. There will be no meeting of the AYPA this week.

SPRINGFIELD—O'Leary United Baptist Church, Services—Rev. Maxwell Nesbitt, pastor. Springfield. Sunday School 10:30 a.m. Service 11:00 a.m. O'Leary Anniversary Service 7:30 p.m. Rev. W.D. Jackson BA London Eng. guest speaker. Social hour in church basement following the service.

ANGLICAN Church Parish of New London 8 a.m. Holy Communion St. Mark's, Kensington. 9:30 a.m. Holy Communion, St. Thomas, French River. 11 a.m. Holy Communion St. Stephen's, Burlington. 7:30 p.m. Evening Prayers, St. Mark's, Kensington. Rev. E.J. Fiander, rector.

PRINCETOWN—LOT 16 Pastoral Charge, the United Church, Princeton. Morning Service 11 a.m. Lot 16. Evening Service 7:30 p.m. Minister, Rev. Frederick Lloyd.

BEDEQUE NORTH Pastoral Charge, the United Church, Minister, Rev. R.M. Shaw. Travelers Rest. Worship 9:30 a.m. North Bedeque. Sunday School 10 a.m. Worship 11 a.m. Free-town: Sunday School 10 a.m. Worship 7:30 p.m. Bible Study 8:30 p.m.

TRYON—BONSHAW United Baptist Pastorate, Services Sunday, May 2. Tryon: Sunday School 10 a.m. Worship 11 a.m. Westmoreland: Worship 8 p.m. Everyone welcome. Rev. Edward G. Britten, Pastor.

UNITED CHURCH, Kensington: Church School 9:50 a.m. Morning Worship 11 a.m. Evening 7:30 p.m. Male Choir. Summerfield: Service 9:30 a.m. Rev. Lewis M. Murray, BA, BD, minister.

ALBERTON AND West Point Presbyterian Services, May 2. Presbyterian Services, May 2. Rev. L.R. Files, interim-moderator. J. Donald Ross, supply. Alberton: Sunday School 10:30 a.m. Worship 11 a.m. West Point: Worship 2 p.m. Sunday School 3 p.m.

ALBERTON Pastoral Charge, the United Church. Rev. David MacDonald, minister. Tignish: Worship 9:30 a.m. Casumpec: Worship 11 a.m. Alberton: Sunday School 11 a.m. Worship 7:30 p.m.

THE UNITED CHURCH Brown Jardine, minister. Miminegash 11 a.m. Montrose 3 p.m. Elmisdale 7:30 p.m. Sermon, "The United Church Doctrine and our answer to the statement, 'I Was Saved Last Night.'"

RICHMOND BAY Pastoral Charge, the Presbyterian Church. Communion services will be conducted by Rev. Leslie Files, interim-moderator. Sunday as follows: Freehold 9 a.m. Tyne Valley 11 a.m. Victoria West 2:30 p.m. Combined preparatory service and fellowship meeting Tyne Valley Church, Saturday, May 1 at 8 p.m.

NORTH TRYON Presbyterian Church. Services Sunday, May 2. WMS Thankoffering service conducted by Mrs. Rendie Larter. Presbyterian President in the church school at 12 noon. Rev. Donald Nicholson, interim-moderator.

BEDEQUE Pastoral Charge, the United Church. Rev. R.M. Cameron, minister. Albany: Church School 10 a.m. Worship 7:30 p.m. Bedeque: Church School 10 a.m. Worship 11 a.m. Borden: Church Schools 10 and 11 a.m. Worship 8 p.m.



BETWEEN THE COOK AND MINIMUM COST!



STORE - WIDE VALUES AT CLOVER FARM HELP YOU TO PREPARE TOP QUALITY MEALS AT MINIMUM COST

LIBBYS (without meat)

BEANS

5 ^{20 Oz.} **1.00** _{Tins}

SUNNY VALE (Halves)

PEACHES 28 Oz. **35c** _{Tin}

LIBBYS GRAPEFRUIT

JUICE 48 Oz. **43c** _{Tin}

LIBBYS COOKED

SPAGHETTI 2 ^{20 Oz.} **45c** _{Tins}

LIBBY'S FRUIT

COCKTAIL 20 Oz. **35c** _{Tin}

CLOVER FARM SLICED

CHEESE 2 ^{8 Oz.} **59c** _{Pkgs.}

SILVER LASSES

MOLASSES qt. **39c**

RED ROSE GAUZE

TEA BAGS 60 COUNT **89c**

GOLDEN RIPE

BANANAS **19c** _{LB.}

NEW TEXAS

ONIONS **2** ^{LB.} **25c** _{BAG}

LARGE WHITE or PINK

GRAPEFRUIT **4** ^{FOR} **39c**

CLOVER FARM 2 FRUIT

MARMALADE . . . 24 OZ. **43c** _{BOT.}

CLOVER FARM

FIG BARS . . . 1 1/2 LB. **53c** _{PKG.}

BARBOURS

PEANUT BUTTER 16 OZ. **49c** _{ICE BOX}

DR. BALLARDS CHAMPION

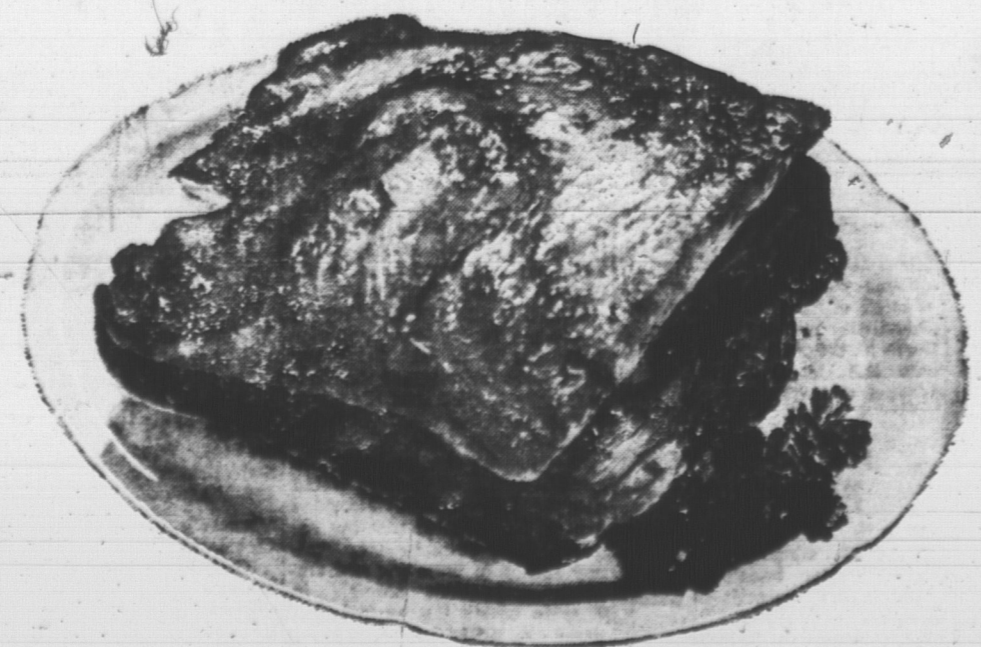
DOG FOOD 2 ^{15 OZ.} **27c** _{TINS}

KELLOGGS

CORN FLAKES 2 ^{8 OZ.} **41c** _{PKGS.}

FOR GOOD SKIN CARE USE

CAMAY SOAP 4 ^{REG.} **49c** _{BARS}



FRESH PICNIC SHOULDER

ROASTING

PORK

38c _{LB.}

LIBBYS JUICE

TOMATO 48 OZ. **37c** _{TIN}

LIQUID STARCH

GLIDE 32 OZ. **29c** _{BOT.}

FOR WHITER WASHES USE

CHEER LGE. **39c** _{PKG.}

B - H

CREST INTERIOR LATEX OR WHITE EXTERIOR PAINT

4.89 _{GAL.}

HEINZ

Tomato Ketchup 20 OZ. **39c** _{BOT.}

CARNATION INSTANT 3 LB.

Powdered Milk (With 10c Coupon on Nestles Quik) **\$1.19**

BARBOURS PURE

Black Pepper 4 OZ. **35c** _{PKG.}

TREBORS COFFEE - CHOC. - MINT

Coconut Crunch 1/2 LB. **35c** _{BAG}

FOR GROOMIER HAIR TRY

Brylcreem REG. **39c** _{LGE.}

PERFECTION (With Free Cones)

ICE CREAM 1/2 GAL. **99c**

McCain's

Potato Puffs 9 OZ. **23c** _{PKG.}

CANADA PACKERS RINDLESS

SUNSET BACON 1 LB. **49c** _{PKG.}

REAL LEAN

GROUND BEEF **49c** _{LB.}

SWEET PICKLED

NECK RIBS 4 **59c** _{Lbs.}

SUPERIOR PORK

SAUSAGES **53c** _{Lb. Pkg.}

FIRST GRADE

BUTTER **57c** _{LB.}

SPECIAL PRICES EFFECTIVE
TIL CLOSING TIME SAT., MAY 1st