

Planting Pointers For Window Boxes

Window box enthusiasts will welcome some planting pointers from gardening authority George Blais of Canadian Industries. "Window boxes are no longer restricted to window ledges, and the possibilities of achieving interesting decorative effects by installing planters on the patio or on the porch should not be overlooked. Today there are colorful redwood and shaped asbestos planters available, as well as less expensive cypress or white pine. Whichever you choose it should be at least ten inches deep, 12 inches wide and, for convenience, not more than three feet long, and there should be holes in the bottom about six inches apart.

"First, cover the bottom with a layer of coarse charcoal or other inert material to ensure drainage, and then fill the box with soil containing a balance of nutrients. A good planting medium, for example, is a modified 'Cornell mix', and the ingredients can be bought at any nursery or garden centre. The proportions of this mix, which are given below, are for a window box 10" x 12" x 36".

Some plants are particularly well adapted to window boxes. However, your selection should be based on whether they will be grown from seed or plant and also whether the box will be located in the sun or semi-shade.

- The following guide may be helpful:
- | | |
|-------------------|-----------------|
| SUNNY | Trailing plants |
| China aster | Sedum |
| Centauria | Thunbergia |
| Marigold | |
| HALF-SHADE | |
| Ageratum | Periwinkle |
| Begonia | Wandering jew |
| Fuchsia | Begonia |
| Coleus | |
| Impatiens | |
| Geranium | |

- | | |
|--------------------------|------------|
| SUNNY (From Seed) | |
| Upright | Trailing |
| Cape marigold | Alyssum |
| Kochia | Portulaca |
| Phlox drum- | Thunbergia |
| mond | c c n |
| French marigold | |

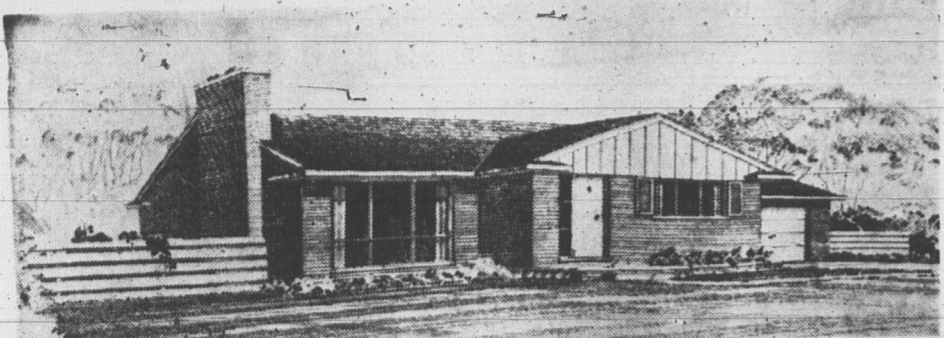
- | | |
|--|------------|
| HALF-SHADE | |
| Balsam | Nasturtium |
| If you're feeling adventurous, try planting tomatoes (being sure to keep them well-staked and pruned), peppers or tiny salad | |

plants and herbs such as horage chives or parsley. The soil should be kept damp, but not soaked, adding one tablespoon of "Plant Treat" 20-20-20 to each gallon of water. And to prevent plants from becoming sprawling and ungainly, pinch out the tip of leggy plants.

CONTEMPTIBLES RETIRE
LONDON (CP) — The "Old Contemptibles" marched for the

last time to the strains of Tip-Top in their annual memorial parade through London. Veterans of the original British Expeditionary Force in the early months of the First World War—the army Kaiser Wilhelm dubbed "contemptibly small"—the old soldiers are nearly all more than 70 and the parade organizers think future marches would be too much for them.

OTTAWA (CP)—A computer expected to save the defence department \$1,000,000 a year in personnel costs is to be installed by the department here next summer. It will keep pay resisters—work now done by 1,400 persons.

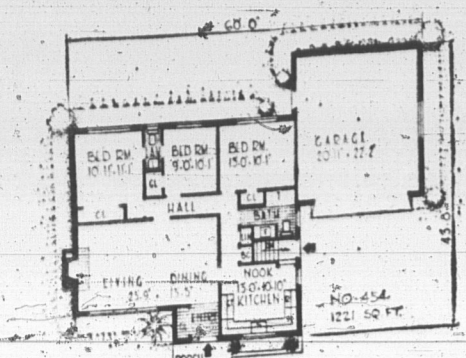


HOW TO OBTAIN DESIGN BOOK

The latest design book entitled "101 Selected Suburban and Country Homes, Designed for Canadians," is now available at the offices of The Guardian and The Evening Patriot for \$15, tax free. This new edition includes color selection, etc., plus over 100 popular new designs to choose from. Also included are full designs on how to order blueprints.

shellac, or apply a solution of one-half pound of chip glue dissolved in two quarts of water. Allow the coating to dry thoroughly before using runner.

This is Red Cross Water Safety Week.



This home is not only pleasing to the eye but has a special appeal in that it will blend harmoniously in any neighborhood. Unobstructed wall space, bottom-vented picture window plus sliding doors to kitchen and a hall are some of the items that help make this home comfortable. The lavatory between two of the bedrooms is accessible to both by sliding doors... this location

gives you actual "bedroom with bath" convenience for all three bedrooms. The kitchen is almost square with ideal work area arrangement. Side entrance is convenient to both basement and kitchen. As shown, a 75 foot lot would be required but with a single garage 60 feet is sufficient. Design is brick veneer but details for building in frame or solid brick are supplied. Design No. 455-1, 220 Sq. Ft.

First Aid For Ailing Houses

By ROGER C. WHITMAN

PAINT OVER SHINGLES
QUESTION: We have decided the brown-stained shingles on our house look too gloomy. Can white house paint be put on over shingles which have been stained several times?

ANSWER: Certainly. But not vice versa. Stain over painted shingles looks dreadful.

BRASS DOORKNOB CARE

QUESTION: Is there any special care needed for brass door knobs?

ANSWER: Tarnish remover will get them bright, brass polish will make them shiny, and a coat of clear lacquer or clear plastic spray will preserve the results; at least a great deal longer than without this protection from grubby hands.

CHANGING FAUCET WASHER

QUESTION: Please tell me the steps involved in changing a worn faucet washer? I have been told this is a difficult job, except for a plumber.

ANSWER: With a wrench, loosen the nut which holds the faucet stem, withdraw the stem. This releases pressure on the washer, which rests on the bottom part of the faucet, called the seat. Before replacing with a new washer, use a seat-dressing tool (simple and inexpensive) to smooth the seat, so the new washer won't be chewed up by force-pressure on a rough surface. Any good hardware store stocks inexpensive kits for this repair job, containing full instructions and diagram.

HOUSE PLANS

QUESTION: I would like to understand house construction plans and methods. Is there any source for such information?

ANSWER: Many sources. Consult your library or bookstore for titles. Write to Sunset Magazine, Menlo Park, Calif.; Popular Science Monthly, 355 Lexington Ave., New York City; Better Homes and Gardens, Des Moines Iowa; the American Home, 644 Lexington Ave., New York City, 10022. Many newspapers are likely sources too.

MOTHS INVADDED FURNITURE

QUESTION: How can I remove a moth invasion from overstuffed chair and davenport?

ANSWER: If an estimate from a professional exterminator is affordable, let him do the job. At-home methods aren't too simple. One such is to remove the furniture to a spot where the moths won't be bothersome, and when it will be safe to burn a sulphur candle. Place the candle under the chair so the fumes will rise up through the upholstery. Make a tent over the chair of sheet plastic or canvas, to keep the fumes in. This should continue for at least 12 hours. Another: With the same tent technique leave a couple or three pounds of moth flakes on the seat(s), so the fumes can work downward. This needs at least 48 hours at 70-degree minimum temperature.

FLAGSTONE TERRACE

QUESTION: I am considering building a flagstone terrace-patio at the rear of my house, where there is a level area in the land slope. What is the procedure for this?

ANSWER: Excavate the area where the patio is to be constructed to a depth of about 10 inches. Then place cinders (not ashes) in the excavation and roll and tamp well to within five inches of the level desired. Over this put down a three-inch bed of concrete, using one part portland cement, two parts sand, and three parts of stone no larger than one inch. Use no more water than necessary to make a workable mixture. Follow this with a setting mixture of three parts sand and one part cement. As soon as the setting bed is levelled, sprinkle it with dry portland cement and lay down the flagstones in the pre-arranged pattern, being sure the stone is thoroughly wet when setting it. Point all joints with a mortar mixture of two parts of sand and one part cement.

FINE PLASTER CRACKS

QUESTION: I am covering a large walk-in closet into a sewing room. How can I repair fine, hairline cracks in the plaster walls?

ANSWER: Very fine hairline cracks can be filled by brushing with a mixture of one part turpentine and three parts boiled linseed oil. Somewhat wider cracks are repaired with white lead thinned with turpentine to a fairly thin paste. This is rubbed on the cracks with a cloth to force the paste into the open space. Wipe excess from the surface. When the paste is thoroughly dried, light sandpapering may be necessary.

LIMP CARPETING

QUESTION: The carpeting we use for runners in our halls has become very limp after years of use. How can I treat them to make them stiffer?

ANSWER: Turn the runners over, in an area where they can remain undisturbed for at least 24 hours. Tack them lightly in place. Then brush on either a thin coat of pure, fresh white

DANCING

Modern and Old Time Dancing every Tuesday night at the Kensington Legion Home.

Dancing from 9.30 to 12.30.

Music by Eddie Mathews Hillbilly Orchestra.

Admission price 75c per person.

DEAF?

INSTANT HEARING NOTHING IN EITHER EAR!!

It's here! What you have always wanted, an invisible hearing aid, nothing in either ear, no earpiece fitting of any kind. Wear this instrument and no one will ever know. Hear at once with clarity, free from disturbing noises. Here is a new technique, a new way to better hearing, a new hearing life for the hard of hearing. A new deal for the deaf. Prove this claim in your own home FREE by sending the coupon within 10 days to:

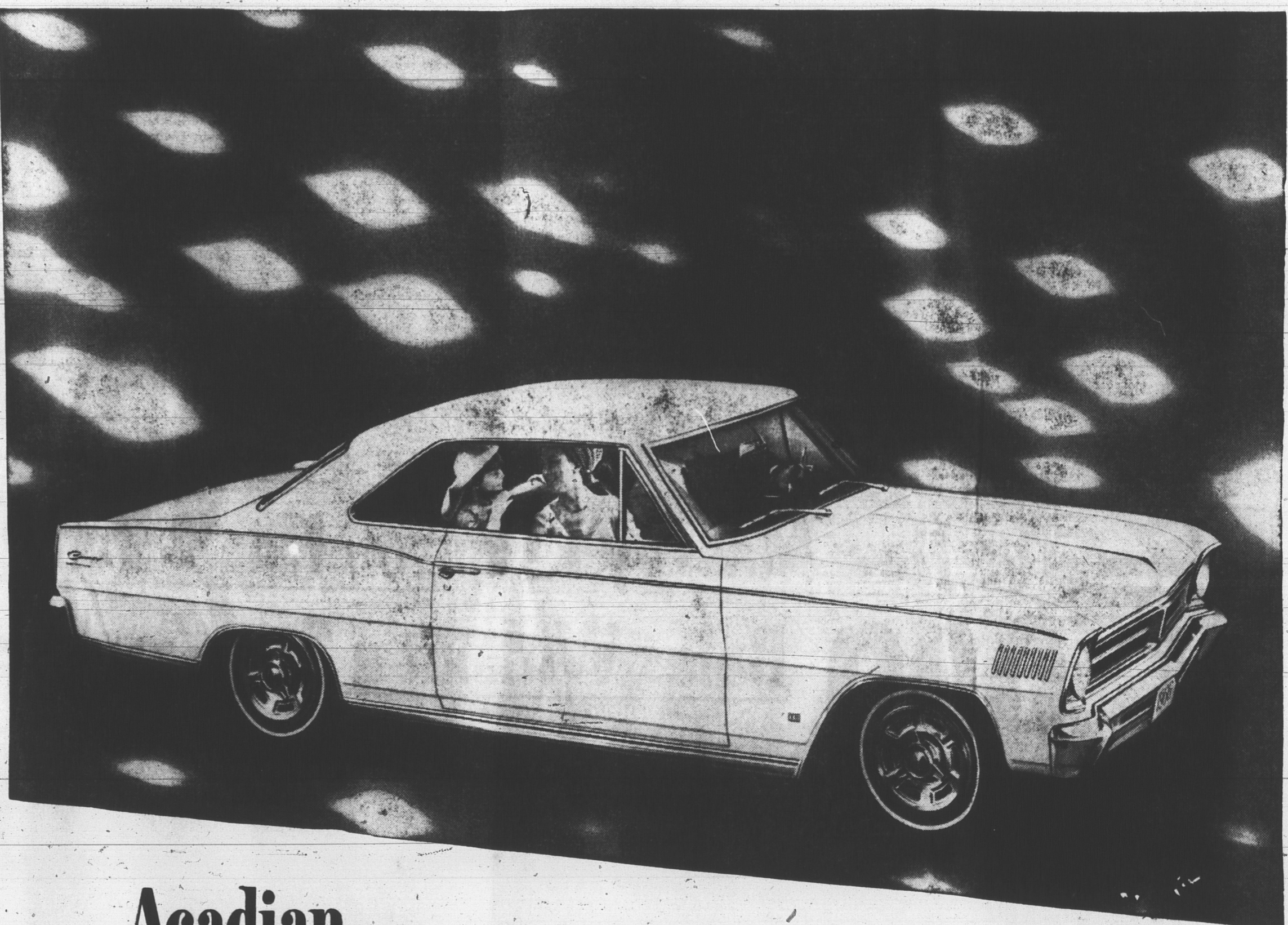
Martinez Hearing Service, Bayers Rd. Shopping Centre, Starline Bldg., Halifax, N.S.

Name _____
Address _____

To the Electors of 6th District in Queen's County:

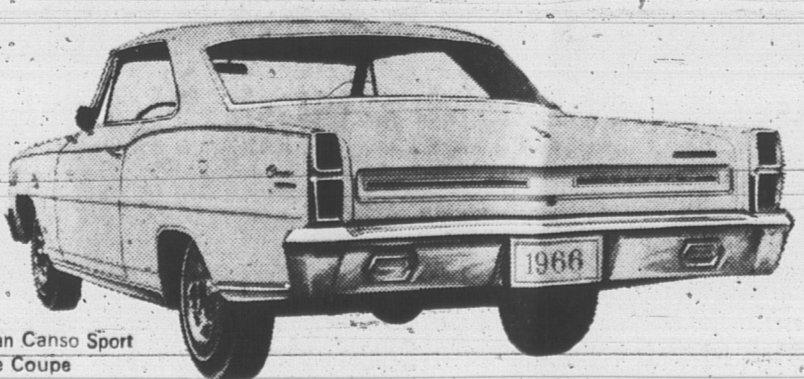
Sincere thanks to our workers and supporters on election day.

DAVE STEWART
M. A. FARMER



Acadian... the dollar-stretching, budget-loving, trim-size beauty from General Motors.

Acadian pulls no punches. It's a low-price car and proud of it! Acadian won't try to convince you it's an expensive car. Of course there's a very good chance that other people will get an inflated impression of Acadian's cost. Take your neighbors, for instance. They'll envy you your new Acadian. That's contemporary styling and Body-by-Fisher construction for you. Your passengers wouldn't believe Acadian's price tag, either. And who could blame them. Acadian has so much luxury, comfort, roominess and performance. Pick any one of Acadian's six low-price models and you've just added another budget-lover to the family. And as we all know, you just can't get too many of them! You'll find a wider-than-ever selection of models and colors at your Acadian-Pontiac-Buick dealer's. Trade-in allowances are high, the deals are great and delivery is faster than ever.



Acadian Canso Sport Deluxe Coupe

Acadian by General Motors

A GENERAL MOTORS VALUE

AUTHORIZED ACADIAN-PONTIAC BUICK DEALER IN CHARLOTTETOWN

HILLSIDE MOTORS LIMITED

113 St. Peter's Road
Charlottetown, P.E.I. Dial 2-1243
Be sure to see "The Fugitive" Mondays at 9 to 10 P.M., "The Red Skelton Hour" Tuesdays at 9 to 10 P.M., and "Telescope" Thursdays at 10:30 to 11 P.M. on channel 13.