

CHURCHES SUNDAY

JUNE 2

KINGS

MURRAY HARBOUR Church of Christ, 9 p.m. Bible School and Sunday Supper, 7:30 p.m. evening worship. Speaker: David Weale.

PRESBYTERIAN CHURCH, Peter's Road: Church School 10 a.m.; worship 11 a.m.; Murray Harbour North: Church School 1:30 p.m.; worship 2:30 p.m. and Calcedonia: Church School 10 a.m.; worship 7:30 p.m. Rev. M. Currie, minister.

DUNDAS ANNANDALE and Georgetown Pastoral Charges of the United Church, Annandale United Church, worship 11 a.m. St. David's Church, Georgetown: worship 3 p.m.; Church School 10 a.m. Dundas United Church: worship 7 a.m.; Church School 10 a.m. Minister: Rev. R.M. Poockington.

SOURIS — RAY Fortune Pastoral Charge, The United Church, Pastoral Charge of Souris 11 a.m. At Bay St. Lawrence, Rev. D.W. Adams, minister.

THE MONTAGUE Pastoral Charge, The Presbyterian Church, St. Andrew's, Montague: Church School 10 a.m.; sacrament of infant baptism and worship 11 a.m.; worship 11 a.m. St. Andrew's, Carleton Place: Church School 1:45 p.m.; worship 2:30 p.m. Rev. Basil J. Lowery, B.A., BD, minister.

MONTAGUE PASTORATE, The United Church, Rev. Russel Burns, minister. Lower Montague, 9:45 a.m. worship; Montague, 11 a.m. worship; Sturgeon 2:30 p.m. worship.

MURRAY RIVER Pentecostal, Rev. A. Lombard, minister. Pentecost Sunday, Sunday School 10 a.m.; worship 11 a.m. 2 p.m. service; 7:30 p.m. Communion to follow the morning service.

UNITED BAPTIST Pastorate, Rev. A.G.J. Steves, minister. Montague, 10 a.m. Sunday School; 7:30 p.m. evening song service. Murray Harbour, 11 a.m. Sunday School; 2 p.m. worship. Murray River; 2 p.m. Sunday School; 3:15 p.m. worship; Sturgeon, 11 a.m. Sunday School; 7:30 p.m. worship.

UPTON GOSPEL Chapel, 3:30 p.m. worship; 8 p.m. Gospel service.

MONTAGUE BIBLE Chapel, 9:30 a.m. Lord's supper for believers; 10:45 a.m. Sunday School; all ages including adult class; 7:30 p.m. regular service.

MURRAY HARBOUR — Murray River Charge, The United Church, Murray Harbour, 11 a.m. Sunday School; 10 a.m. Murray River; worship 2 p.m.; Sunday School 2 p.m.; Little Sands; worship 7:30 p.m.; Sunday School 11 a.m. White Sands; Sunday School 10 a.m. "Dedication to Mission" for the young groups. Confirmation and Holy Communion in Little Sands. Rev. David H. Barwise, minister.

BEACH POINT Gospel Chapel — Sunday School 10:30 a.m.; breaking of bread, 11:30; Evangelistic service, 7:30. Lou Harris, speaker.

VALLEYFIELD — ORWELL, Head United Church, Rev. A.S. Weir, DD, minister-in-charge. Orwell Head 11 a.m.; Valleyfield 9 p.m.

FREE CHURCH of Scotland, Birch Hill 9:30 a.m.; Sabbath School 10:30 a.m.; Belle River 3 p.m.; Murray River 2:30 p.m. Ewen J. MacDougall, student.

QUEENS WINSLOE CHARGE, The United Church, Highfield 11 a.m.; Princetown Road, 11 a.m.; Winslo South 7:30 p.m. Minister: Mr. J.B. Miller.

HAMPION PASTORAL Charge, The United Church, Desable 9:45 a.m.; Bonshaw 11 a.m.; Victoria 7:30 p.m. Rev. Bryn R. Jones, minister.

CORNWALL UNITED Church Charge, Worship: Kingston 9:45 a.m.; Cornwall 11:15 a.m.; New Dominion 7:30 p.m. Sunday School promotional classes during the service at Cornwall.

FOR THE LAND'S SAKE-LIME

Soil acidity slows down the decomposition of organic matter and reduces the yields and quality of hay and pasture. LIME is the cheapest all-round soil corrector on the market and should be applied to acid soil, it makes all major plant nutrients available. Always available. "LIME WORKS". Shipped in cartons of 10 tons or more, bagged or bulk. Order now from—

HAVELOCK LIME WORKS
Havelock, N. B. Phone LE534-243
FOR COMPLETE REALTY SERVICE
STANLEY MOL REAL ESTATE LTD.
78 Great George St.
Near Travel Bureau on ground floor.
DIAL 2-1611
Specializing in Commercial and Rural Properties.
City Residential Apartments Management
Canadian Real Estate Board Member and P.E.I. Real Estate Association Member.

tion, Vernon River, 8 p.m. Pownall Sunday Schools, Cherry Valley after Church. Pownall, 10:45 a.m. Rev. F.R. Goudge, minister.

UIGG — Hazelbrook: Uigg 11 a.m.; Hazelbrook 7:30 p.m.; Rev. C.W. Pansy, minister.

THE PRESBYTERIAN Church, Wood Islands: worship 9:30 a.m.; Rev. Donald Nicholson, minister.

MARSHFIELD — HARRINGTON and Mt. Stewart Pastoral Charge, The Presbyterian Church, Wood Islands: worship 9:30 a.m.; Church School 10:30 a.m.; Mt. Stewart 11 a.m.; Marshfield 7:30 p.m.; Church School 10 a.m.; Communicants class 6:30 p.m.

THE PRESBYTERIAN Church, St. John's, Belfast: worship 11 a.m. and 7:30 p.m.; Sunday School 10 a.m. Rev. Donald Nicholson, minister.

THE UNITED Church, Mount Stewart — Saint Peter's Bay Charge, Mount Stewart: 11:15 a.m. worship; 10 a.m. a color Sunday School; 10:30 a.m. junior Sunday School; 10:45 a.m. worship; 10:45 Senior Sunday School and junior Sunday School, Saint Peter's Bay: 8 p.m. worship; 10:30 a.m. Sunday School.

MT. HERBERT United Church, UIC Thankoffering service 9:30 a.m. Rev. Gerald Wynn, speaker.

FREE CHURCH of Scotland, Woodville: Charlottetown 10:30 a.m. and 7 p.m. The sacrament of the Lord's supper will be dispensed at the morning service. There will be no service in Stanchel this Sabbath. Rev. W. R. Underday, minister.

MILTON — RUSTICO Anglican Parish, Rev. A.E. Patey, minister. Milton: 10 a.m. Sunday School; 11 a.m. morning prayer and sermon. St. Mark's, Rustico: 6:45 p.m. Sunday School; 7:30 p.m. evening prayer and sermon.

CHERRY VALLEY, Christ Church: 9:30 a.m. Holy Communion. Rev. A.E. Patey, priest-in-charge.

PRINCE NORTH TRYON and Breadalbane: 11 a.m. Sunday School; 11 a.m. worship; Clyde River: 10 a.m. Sunday School; 7:30 p.m. annual thank-offering service. Churchill: 10 a.m. Sunday School; Minister: Rev. Raymond J. Gill.

VERNON — POWNALL Pastoral Charge, The United Church, 9:30 a.m. Cherry Valley; 11 a.m. Sacrament of Baptism.

Moore & McLeod Ltd. DO-IT-YOURSELF ... Quickly ... Easily ... It's so inexpensive

with NEW ready-pasted SUNWORTHY WALLPAPER

Complete line of Decorating Supplies 99c S.R.

Come in today Third Floor on the Island It's Your Favorite Shopping Centre

BLEND-IT Exterior LATEX SATIN

A Quality Product specially formulated for maximum durability, beauty and long-lasting protection to exterior surfaces. Superior adhesion. Superior resistance to weathering. Coat with most previously painted hiding, sealants, primers, surfaces. Charge of 72 cal. oz.

gal. \$4.89

CANADIAN TIRE Stewart & MacRae Ltd. ASSOCIATE STORE 88 Queen St. Dial 4-8569

The ROGERS HARDWARE Co. Ltd.

It's so easy. With neither brush or roller, Golden Speed Satin latex paint "smooths" itself on any surface. No effort. Your room is fresh, bright, perfectly painted to stay with you forever. Speed Satin is completely washable and makes a long-lasting, yet high coverage make it economical to use!

Save in today and choose from 170 colors and 300 shades in 1 — and only one — color. Spread Satin for woodwork — and enjoy reduction in the easy redecorating!

The Rogers Hardware Co. Ltd. "If It's Hardware We Have It" Queen Street Dial 4-8501 Charlottetown

TRYON PASTORAL Charge, The United Church, Rev. W.A. MacQuarrie, DD, minister. Tryon: worship at 9:45 a.m.; Sunday School at 10:45 a.m. Cape Traverse: Sunday School at 10 a.m.; worship at 11:15. Crapaud: Sunday School at 11 a.m.

TRYON — BONSHAW United Baptist Pastorate, Rev. L.R. Graves, minister. Tryon 11 a.m.; Westmorland 3 p.m. Try-on Sunday School 10 a.m.; Westmorland 11 a.m.

FREE CHURCH of Scotland, Western charge, Argyle Shore: Sunday School 10:15 a.m. worship 11 a.m.; Cape Traverse: Sunday School 10 a.m. Rev. Donald Nicholson, minister.

CHRISTIAN Church, Summerside, minister D.L. Howlett, Bible School 10 a.m. morning worship 11 a.m., evening service 7 p.m.

PRINCETOWN — Lot 16 Pastoral Charge, United Church, Minister Rev. Ralph E. Johnson, Malbone, Sunday School 11:15 a.m. worship 11 a.m. O.I.C. Graduation service; Lot 16, Sunday School 10 a.m. worship 7:30 p.m. Masonic Church Parade.

FUNDAMENTAL BAPTIST Church, Central Beedee: worship 10:45 a.m. Sunday School 12 noon, service 7:30 p.m. Rev. Bernard Toner, Pastor.

BEDEQUE UNITED Baptist Church: Sunday School 10 a.m., worship 11 a.m. Rev. H.T. Estabrooks, associate pastor.

NORTH BEDEQUE Pastoral Charge, United Church of Canada: Traveller's Rest 9:30 a.m. Sunday School 10:30 a.m. Free-town, Sunday School 10 a.m. worship service 11 a.m.; North Beedee, Sunday School 10 a.m. worship service 8 p.m. J.T. Waldron, minister.

ALBERTON, WEST Point, Freehold Presbyterian Church: Minister: Rev. Peter J. Darach.

Darach assistant to minister; J. Donald Ross; Alberton, worship 11 a.m. West Point, worship at 2:30 p.m. Freehold, worship, 7:30 p.m. Services conducted by Mr. J. Donald Ross.

TYNE VALLEY, Victoria West, Lot 14 Presbyterian Churches: minister — Rev. Peter J. Darach assistant to minister. J. Donald Ross, Tyne Valley, worship 11 a.m. Lot 14, 2:30 p.m. Victoria West, worship 7:30 p.m.; services conducted by Rev. Peter J. Darach.

UNITED CHURCH Wellington Pastoral Charge: Rev. W.B. MacPhail, minister. Wellington 11 a.m., Union Corner 3 p.m., Victoria West 9 p.m.

ANGLICAN SERVICES, New London Parish: 11 a.m. matins, St. Marks: 2:30 p.m. evensong, St. Stephens, Rev. A.E. Piercy at St. Stephens, 7:30 evensong, St. Thomas, Priest in charge, Rev. A.E. Piercy.

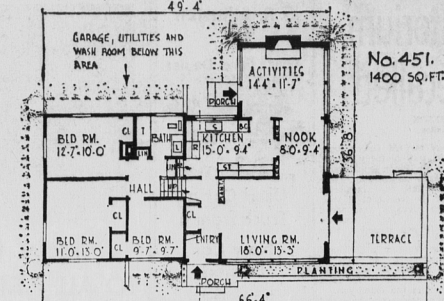
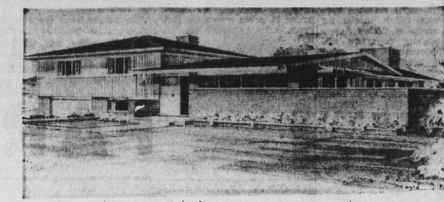
ALBERTON Pastoral Charge — United Church of Canada: Rev. David MacDonald, minister. Tignish worship, 9:30 a.m. Cascumpe Sunday School 10 a.m.; worship 11 a.m. Alberton Sunday School, 11 a.m.; worship, 7:30 p.m. All services conducted by Brown Jardine.

O'LEARY UNITED Pastoral Charge: 9:30 Brae: 11:15, Bloomfield: 2:30 West Devon: 7:30 Bloomfield, Rev. D.H. Hamilton minister.

MONTROSE Pastoral Charge — United Church, Brown Jardine, minister. Minnecash 9:30 a.m.; Elmidge 11 a.m.; Montrorse 3 p.m. Lord's Supper, all services, Rev. David MacDonald.

UNITED CHURCH Kensington Church School 9:30 a.m.; worship 11 a.m. Sacrament of Baptism. Worship 7:30 p.m. Summerfield, service 9:30 a.m.; Church School 10:30 a.m. Minister: (Continued on page 18)

GUARDIAN-PATRIOT HOME OF THE WEEK



Split levels make for spacious living and here's a plan that has all the advantages of this type of construction and could be built on a 65 foot lot. It contains only two stairways! A seven - riser stair to the sleeping area off entry hall and a five - riser stair to the basement from the kitchen. The drop beam between living room and nook, and sliding glass wall between nook and the Activities Room gives you a huge "D" shaped social center for easy entertaining. The Living room has access to the walled - in terrace, an ideal spot for relaxing. Three bedrooms and bath comprise the upper level sleeping wing. Basement level has separate laundry room, a laundry, a store room and a self opening freestair to the garage. Of frame and brick veneer construction, this design could also be built in solid brick.

HOW TO OBTAIN DESIGN BOOK

The latest design book entitled "Canadian Guide to Home Planning and Design" is now available at the Office of The Guardian and The Evening Patriot in Charlottetown, P.E.I. This new edition includes information on financing in Canada, building construction, landscaping, color selection, etc. Also included are instructions on how to order blueprints for the above home.

THE CARD SHOP

● Greeting Cards ● Art Supplies ● Games ● Good Books For Children & Adults 180 Graton St. Dial 4-9971

THE FASHIONETTE BEAUTY SALON

● Cold Waves ● Bleaching ● Tinting ● Shampooing Phone 4-9752 27 Graton St.

GARDEN SEEDS

● Field Seeds ● Garden Seeds ● Lawn Mixtures ● Fertilizers HALIFAX SEED CO. P. E. I. LTD. 72 Queen St. Dial 4-8313

NOW OVER \$20,000 HIDDEN UNDER PEPSI CAPS THOUSANDS MORE LUCKY CASH AND CHANCE TOKENS! MORE GRAND PRIZES! MORE CHANCES FOR YOU TO WIN!

11 LUCKY CANADIANS WILL WIN... (A WINNER A WEEK FOR 11 WEEKS)

Renault Caravelle A RETURN TRIP TO PARIS FOR TWO VIA TCA JETLINER ... AND \$1,000 EXPENSE MONEY
Here's your chance to win a world famous Renault Caravelle... a return trip to Paris for two... and a cash prize of \$1,000. Start your search today!
1. Weekly contest winners will be selected April 23rd, 20th, May 7th, 14th, 21st, 28th, June 4th, 11th, 18th, 25th and July 8th, 1963. Contestants will be required to accurately answer a 30-riding question before being declared a winner. The decision of the judges is final.
2. Tickets redeemable for cash may be exchanged at any time. However, to participate in one or more of the above weekly contests, entries must be received by midnight on the Friday preceding a subsequent weekly contest.
3. Entries are often as possible. Each entry must be accompanied by a token or reasonable facsimile, one mailed in a separate envelope.
4. For a complete list of major award winners, send a separate stamped, self-addressed envelope to: WILSON'S PEPSI-COLA CONTEST, P.O. BOX 51, MONTREAL, P.Q.
5. Prizes must be accepted as awarded. No substitutions will be made. Only one weekly contest winner per family.
6. This contest is open to all residents of Canada, except the employees and immediate families of Pepsi-Cola Canada Ltd., its Franchised Bottlers, Advertising Agency, and the judging organization.
7. Entries and contests heretofore become the exclusive property of Pepsi-Cola Canada Ltd. No entries will be returned, but will any correspondence be exchanged with contestants other than with the winners.
8. For a complete list of major award winners, send a separate stamped, self-addressed envelope to: WILSON'S PEPSI-COLA CONTEST, P.O. BOX 51, MONTREAL, P.Q.
SEND ONLY THE TOKEN - NOT THE BOTTLE CAP