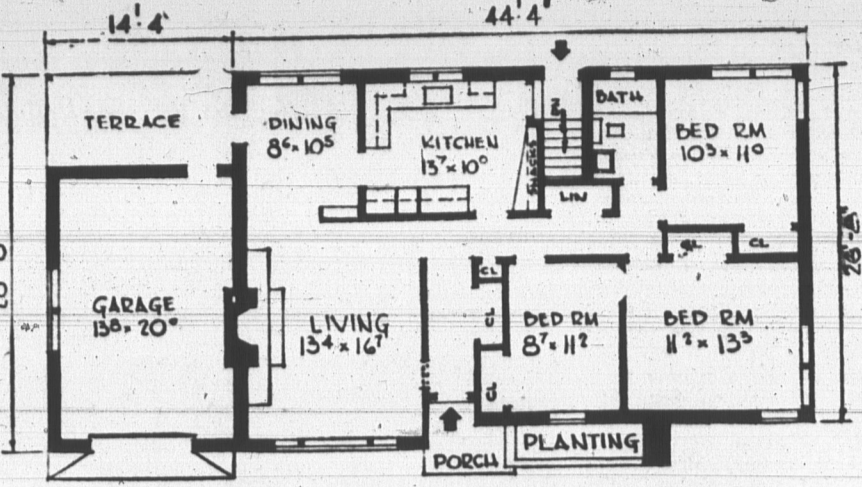
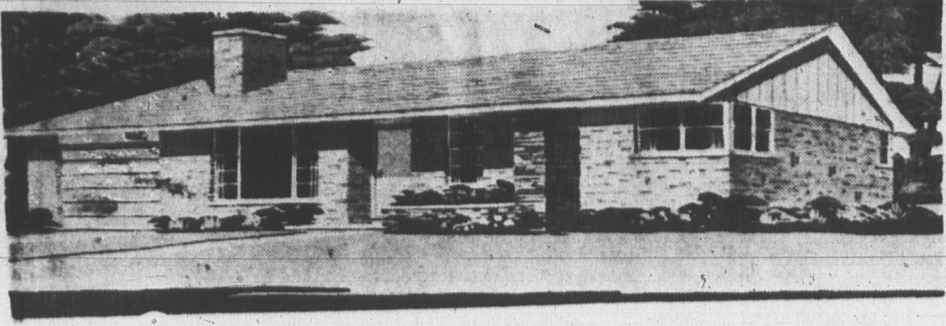


GUARDIAN-PATRIOT HOME OF THE WEEK



DESIGN No. 648. House 1200 Sq. Ft. Garage 282 Sq. Ft. (Blueprints include full details for building in Brick or Frame)

This pleasing three bedroom home features corner windows in end bedrooms, excellent traffic circulation, and an attached garage with sheltered terrace at the rear. There is provision for an additional washroom in the basement. The simple roof line reduces

the cost of construction, and adds to the charm of this interesting Design. House would require a 75 foot lot, 60 without the garage. The construction is brick veneer but the blueprints include complete details for building in frame or solid brick.

First Aid For Ailing Houses

By ROGER C. WHITMAN
"TERRAZZO" DRIVEWAY
QUESTION: I saw a concrete driveway recently while out on a Sunday afternoon drive, which I liked very much. The surface seemed to be pebbled with stones of various colors. Where could I obtain instructions for putting this kind of topping on a my driveway?
ANSWER: Inquire at your local branch of the Portland Cement Association, or write to Headquarters, 33 West Grand Ave., Chicago. The association has many useful booklets, all of them free for the asking. Why not go up and ask the home's owner the contractor's name? Seems like the simplest approach.

SPOTTY BASEMENT FLOOR
QUESTION: There have always been white spots on my basement floor. I thought if I painted they would disappear. No such luck. The spots reappeared through the paint. What is the trouble?
ANSWER: The concrete was not given the usual etching with an acid solution so the free lime in the concrete keeps working to the surface. It's unfortunate that you painted, because this lime-neutralizing treatment only works on bare concrete. I really don't know of any way to shortcut removing the paint so the etching treatment can be given. If any of our friends can help us out, I'd be most grateful to hear about it!

KNOCKING FAUCET
QUESTION: Every time I turn on the kitchen faucet it knocks loudly. This has been getting worse lately. What can I do about it?
ANSWER: The washer is now so badly worn that serious damage to the faucet may easily result if you don't have it removed and a new washer put in. Undoubtedly the seat (where the washer rests) is badly chewed up and should be smoothed too. Kits for this repair are widely available at hardware stores. If you're doubtful, have it done by a plumber, although doing it yourself will save you probably from \$15 to \$20.

DOOR SEAL STICKY
QUESTION: The rubber seal around the refrigerator door has become quite sticky. I haven't tried anything to unstick it, for fear of damaging the rubber. What will do this job safely?
ANSWER: If the rubber it self isn't deteriorating, you should be able to clean it off with mild soap suds or detergent. Replacing the entire seal will probably be necessary if this attempt to clean isn't successful. As a fair to middling stopgap, you could run a strip of plastic electrician's tape over the seal and observe results. If the motor doesn't run with more frequency than before, this will indicate the seal is still closing efficiently.

SMOKING STAINS PROBLEM
QUESTION: There are heavy cigarette smokers in our family. This results in windows constantly filmed, painted walls, wood work, floors, curtains and drapes turn to dirty brown color. Of course, no amount of dry cleaning or washing will bring back the original color. I have a small exhaust fan over the stove and a double Puritron going full blast, but these do little good. Have you a solution?
ANSWER: One answer jumps up immediately but it would not be welcomed either by the smokers or the tobacco companies. Only other suggestion is to increase the number and power of the fans, ventilate early and often, even if this inconveniences some of the family smoke prod-

WAVY FLOOR
QUESTION: I would like to have a level floor on my basement. It seems quite wavy, with high and low spots. Is there any way I can make it level?
ANSWER: Get a floorleveling compound from your hardware store, lumber yard or dealer in masonry supplies. Made expressly for this purpose.

BIRD PROOFING CHIMNEY
QUESTION: Soon we will be moving into a new house out in the country, and I will appreciate any suggestions as to how I can keep my chimney flue and vent pipes safe against entry of birds and squirrels.
ANSWER: The least complicated method is to shape a piece of quarterinch sturdy wire screen into a shallow basket. The size should be such that you can just push the sides down into the flue opening, with the top slightly larger so it won't quite fit inside. This will serve as a good barrier to would-be tenants, and also make a fine spark arrester. The advantage of this shape is that if and when smoke and gasses eventually corrode the wire, you can easily remove it and put in another. For vent stack openings, just crumple a little bronze, copper or aluminum screening and put it into the top. You can also wire a piece over the top, but it doesn't look quite so neat. Be sure to use the same type-screening as the metal stack. Otherwise with dissimilar metals, there could be set up a corrosive action between them.

BURNED FORMICA
QUESTION: A hot coffee pot was set down on our formica counter top. When removed, we found it had burned a dark, round area in the shiny surface. Hard scrubbing with detergents, and scouring powder had no effect. Can you suggest something which will take this burn out?
ANSWER: If it's really a burn, as you've described, nothing will scrub it out. Hard rubbing with turpentine and steel wool and turpentine might have some effect. Worth trying, anyhow, because if unsuccessful, you'll have to put another layer of formica over this.

SHAKY FLOOR
QUESTION: I noticed that the floor of my son's new development house seems to vibrate when I walk across the living room. Is there anything he can do to make it feel firm under foot?
ANSWER: This may be due to insufficient beams, beams spaced too widely, or not heavy enough to carry the load. It's also possible there is insufficient bracing between beams (called crossbracing). It may well be that your son can do this himself with no trouble. It merely consists of nailing more of those short sections of two by fours firmly between the beams. This will serve to unify the floor, and make it much firmer.

CLEANING ANTIQUE BOTTLE
Mrs. D. G. E., Petosky, Mich. chips in with this useful tip: "Some time ago, a reader asked about cleaning an antique bottle over 100 years old. I've tried powdered toilet bowl cleaner, with hot water; it works very well. Let it stand about 10 minutes, swirl with a bottle brush, then rinse. The glass will be sparkling clean". Many thanks

PAINTING A CHAIN FENCE
QUESTION: Can you tell me what is the best way to paint a chain link fence? I have a large area to cover.
ANSWER: In my opinion, it's pretty much a tossup between a roller with long fiber nap or a spray gun. A brush runs a very poor third. If you use a spray, try to wait for a reasonably still day, so a lot of the paint mist won't waft where it's not wanted. Many people hold large sheets of cardboard on the other side of the fence as a background so the spray won't stray. One definite advantage of the spray over either roller or brush is that it will fit into such tight crannies, like the overlap where one link fits over another (same idea as when painting wicker furniture); spray will penetrate easily into spots you'll never reach with even a small brush, and certainly never with a roller.

TOIL OF WAR
SAIGON (Reuters)—A total of 205 South Vietnamese and 87 United States troops were killed in combat in Viet Nam last week and 599 U.S. servicemen were wounded. An American spokesman said 1,009 Viet Cong and North Vietnamese were killed in the seven days up to Aug. 27 and 191 were captured.

HOW TO OBTAIN DESIGN BOOK

The latest design book entitled "100 Selected Suburban and Country Homes, Designed for Canadians" is now available at the offices of The Guardian and The Evening Patriot for \$1, tax free. This new edition includes color selection, etc., plus over 100 popular new designs to choose from. Also included are full designs in how to order blueprints.

Washington Is Watching Strike Moves

By ARCH MACKENZIE
WASHINGTON (CP)—Canadian efforts to settle the walkout of 118,000 rail employees are being followed here with more than usual interest. One reason is the recent American experience with a prolonged strike against five major air lines. Another is the prospect that the United States next year will face major industrial disputes affecting as many as 2,000,000 workers in key industries such as autos, trucking and rubber. Canada's labor-management scene also is being eyed closely in relation to the continuing growth of the Canadian economy and its capacity for absorbing U.S. exports. The Washington Post comments editorially that the "groping that is evident now in Ottawa may in some measure facilitate and encourage the groping which continues in Washington for a long-range policy of handling emergency strikes."

WEREN'T PREPARED
 The Post says that while the Canadian government moved more promptly than Congress was able to do in the air strike, "it is no more prepared to deal with a crisis of this kind than Washington was."

"It adds: "The struggle in Ottawa will be watched with great interest because this problem is common to many free countries. Canada is eager to preserve collective bargaining and the right to strike. "But how long can its economy stand a strike which paralyzes transportation and is said to cost \$15,000,000 a day? Governments must find a way of protecting the public against ordeals of this kind without dictating wage policies."

A current appraisal of the Canadian economy by the U.S. commerce department says some of the steam seemed to have gone in the second quarter of this year, but inflationary signs continued unabated.

SEES PATTERN
 "If the expansion actually has passed its peak," says the weekly publication, called International Commerce, "the inflationary pressures on the economy have gone in not been reduced. There has developed in the last few months a pattern of wage settlements which could support a cost-push inflation, regardless of decreased pressures on supplies."

The review says demand has slackened but investment by public and private bodies in business capital is not slackening and the federal tax increases of last March do not seem likely to affect such investment this year "if at all."

LABOUR DAY STOCK CAR RACES



AT COVEHEAD RACEWAY

Monday, September 5th at 1:30 p.m.

All Cars Registered With P.E.I. Stock Car Assn. Eligible For Racing.

All Cars Must Be In Pit by 1 P.M.

OVER \$700.00 IN PURSES	
Schedule of Race Events	
No. 1 Canadian Tire Corp. 6 cylinder	\$50.00
No. 2 Dow's Restaurant, flat V-8	50.00
No. 3 Vending Services Ltd. Overhead V-8	50.00
No. 4 Montague Bakery, 6 cylinder	50.00
No. 5 Gaudet's Auto Body, flat V-8	50.00
No. 6 Lucky Dollar Food Stores, Overhead V-8	50.00
No. 7 Kimball C. Acorn Irving Service Stn., 6 cyl.	50.00
No. 8 Ranch House Gift Shop, Stanhope, flat V-8	50.00
No. 9 Ray Chappell, rep. F. R. McLaine, Chrysler, Plymouth, Valiant, Overhead V-8	50.00
No. 10 G. & G. Dairy Consolation for non winners	50.00
No. 11 Free For All, Tulle Bros. Easy Cleaning Supplies	200.00

Bring The Family Enjoy A Day of Thrills and Spills.

3 Canteens to Serve You.

Over 50 Race Cars Expected

- Free Parking for two thousand cars
- Trophy for Leading Driver of the Day
- Trophy for Leading Point Accumulation for the Season
- Dust and Track Conditions Perfect

LOOK

Feature Event

35 Laps

Cars Will Be Racing for a

\$200.00

Purse

Admission Adults 1.00 Children Under 12 FREE	Over 100.00 in Door Prizes
---	-------------------------------------

This ad published with the help of the following sports minded merchants:

- | | | |
|--|---|---|
| Mechanical Man Car Wash
"CLEAN CARS ARE HAPPY CARS"
Rear B. A. Station Elm Avenue | O. K. Tire Store
St. Peters Road — Parkdale | Brown's Vending
Winsloe, P. E. I. |
| Island Oxygen Ltd.
57 St. Peters Road — Dial 2-1901 | Newson Electric
Queen Street — Charlottetown | Maritime Electric Co. Ltd.
Queen Street — Charlottetown |
| Capitol Auto Supply
181 Great George St. — Charlottetown | MacDonald-Rowe Co. Ltd.
COMPLETE BUILDING SUPPLY
36 Lower Water Street — Charlottetown | H. L. Sear Co. Ltd.
INSURANCE
110 Queen Street — Charlottetown |
| Kingwood Radio & TV.
259 St. Peters Road — SSherrwood | Scantlebury Signs & Plastics
69 St. Peters Road — Parkdale | Maritime Motor Supply Co. Ltd.
38 St. Peters Road — Parkdale |