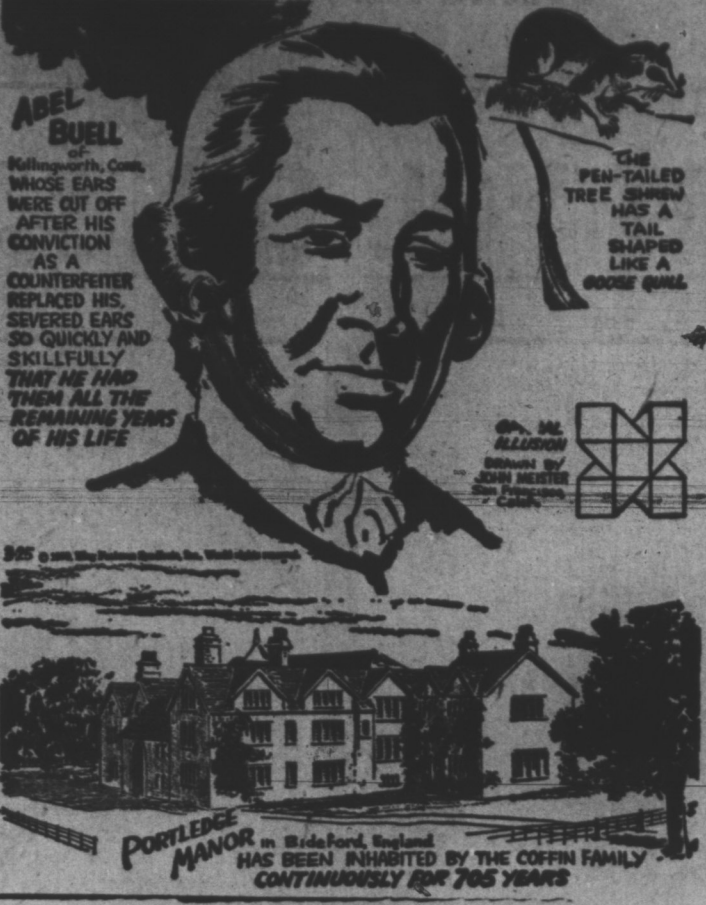


CFCY TV CHANNEL 13 WEDNESDAY 8:15 p.m.—Afternoon Musicals 8:45 p.m.—Nursery School Time 9:00 p.m.—Our Miss Brooks 9:30 p.m.—Howdy Doody 4:00 p.m.—Rope Around the Sun 4:15 p.m.—Children's Newsreel 4:30 p.m.—Open House 5:00 p.m.—P.M. Party 5:30 p.m.—Huckleberry Hound 6:00 p.m.—Looney Tunes 6:25 p.m.—My Little Margie 6:45 p.m.—CFCY TV News 7:00 p.m.—Union Pacific 7:30 p.m.—Walt Disney Presents 8:30 p.m.—Jackie Gleason 9:00 p.m.—Tennessee Ernie Show 9:30 p.m.—One of a Kind 10:00 p.m.—Music Hall 10:30 p.m.—Bat Masterson 11:00 p.m.—Closeup 12:00 p.m.—CBC TV News 12:13 a.m.—Local Weather Forecast 12:15 a.m.—Viewpoint

CKCW — Moncton CHANNEL 3 WEDNESDAY 9:45 a.m.—Station Sign On Record Caravan 10:00 a.m.—Romper Room 11:00 a.m.—Turners Corner 12:45 p.m.—Wednesday Playbill News, Weather, Sports Movie—Patterns 2:30 p.m.—At Home With Helen Crocker 2:45 p.m.—Nursery School Time 3:00 p.m.—Our Miss Brooks 3:30 p.m.—At Home With Helen Crocker 4:00 p.m.—Rope Around the Sun 4:15 p.m.—Children's Int. News 4:30 p.m.—Open House 5:00 p.m.—P.M. Party 5:30 p.m.—Huckleberry Hound 6:00 p.m.—Supper Club 6:15 p.m.—News 6:30 p.m.—Supper Club 6:35 p.m.—Weather 6:40 p.m.—Supper Club 6:50 p.m.—Sports 7:00 p.m.—Rescue '87 7:30 p.m.—Walt Disney Presents 8:30 p.m.—Bunkhouse Boys 9:00 p.m.—How to Marry a Millionaire 9:30 p.m.—One of a Kind 10:00 p.m.—Music Hall 10:30 p.m.—Bat Masterson 11:00 p.m.—Have Gun—Will Travel 11:30 p.m.—Close Up 12:00 a.m.—CBC News 12:15 a.m.—CKCW News 12:20 a.m.—Sign Off

RADIO C.F.C.Y. WEDNESDAY STANDARD TIME 5:58—Sign On 7:00—Hebrew Christian Hour 7:15—Country and Western Roundup 7:30—News and Weather 7:35—Country and Western Roundup 7:40—Farm Reporter 7:55—Interlude 8:00—News 8:11—Weather 8:16—Country and Western Roundup 8:45—Weather 8:50—News 9:00—Morning Devotions 9:10—Morning Moods 9:30—Top Tune Time 9:45—Who Am I 10:00—News 10:05—Magazine of the Air 10:30—Melody Parade 10:50—Melody Parade 11:00—News Headlines and 11:05—Swift Money Man 11:07—The Magic of Music 11:08—Weather 11:09—Rhythm Roundup 11:10—News and Weather 11:15—Mostly Music 11:00—News Headlines and Weather 11:02—Mostly Music 11:17—Mostly Music 11:40—Mostly Music 11:50—School Bcast 11:55—Mostly Music 12:30—Back to the Bible 8:00—News Headlines and Weather 8:02—Best on Request 4:00—News and Weather 4:05—Best on Request 4:30—The Outposts 4:00—News Headlines and Weather 5:30—The Outposts 6:00—News 6:10—Interlude 6:15—Music for You 7:00—Sports Roundup 7:05—Music for You 7:20—News and Weather 7:45—Don Messer's Islanders 8:00—Tonight's Music 8:30—Outpost Forum 9:00—Assignment 10:00—News and Weather 10:15—Starlight Serenade 10:45—Memo From the U.N. 11:00—Dominion Bandstand 12:00—Dominion News 12:10—Sign Off CBA WEDNESDAY STANDARD TIME 7:15—Marine Weather and Fill 7:30—News 7:35—A.M. Chronicle 8:00—CBC News and Weather 8:15—Maritime Sportscast 8:20—A.M. Chronicle 8:45—Morning Devotions 9:00—News 9:05—A.M. Chronicle 9:35—News 10:00—A.M. Chronicle 10:45—Joan Marshall 10:55—For Consumers 11:00—News 11:03—Showcase 11:15—Kindergarten of the Air 11:30—Fighting Words 12:00—Jamboree Junction 12:30—Maritime Farm B'cast 1:00—CBC News and Weather 1:15—The Archers 1:30—Appointment with Agostini 1:59—D.O. Time Signal 2:00—Variations on a Theme 2:15—The Happy Gang 2:45—Woman in My House 3:00—CBC News and T-C Mat 4:00—Art Morrow's Big Band 4:30—Concert 4:51—Maritime Fish B'cast 4:55—The Don Tremaine Show 5:00—News and Weather 6:15—Regional Commentary, Mar. Sportscast and Mus.

RIPLEY'S BELIEVE IT OR NOT



CONTRACT BRIDGE

By R. JAY BECKER South dealer. East-West vulnerable. NORTH ♠ J 3 ♥ A J 2 ♦ J 8 5 ♣ K 10 8 7 6 WEST ♠ A Q 7 5 ♥ 8 5 4 2 ♦ K 2 ♣ K 3 EAST ♠ 8 5 4 2 ♥ K 8 6 ♦ Q 9 6 ♣ Q J 4 2 SOUTH ♠ K 10 6 ♥ Q 10 ♦ A Q 10 7 4 3 ♠ A 5 The bidding: South West North East 1 ♠ Pass 2 ♠ Pass 3 NT Pass 3 NT

House Members Pay Tribute To Boy Scout Association

OTTAWA (CP) — Commons members took advantage of an opportunity Monday to pay tribute to the Boy Scouts Association, incorporated in Canada 45 years ago. Briefly but with obvious affection, numerous members recalled their own scouting days and lauded the association as a prime builder of character, an outlet for outdoor activity and a contributor to national and international goodwill. The occasion was second reading—approval in principle—of a bill authorizing the association's general council to hold an unlimited amount of real estate. Gordon Aiken (PC—Parry Sound—Muskegon), sponsoring the private bill said that since incorporation in 1914 membership has risen to nearly 256,000 and the value of real estate in buildings and campsites is about \$1,442,500—or far above the limit of \$50,000 set in 1914.

Religion In Russia Said Making Gains

MONTREAL (CP) — Religion in Russia, favored by a moderation in the Communist attitude since the death of Stalin, is slowly gaining ground, a Canadian-born New York clergyman said Sunday night. Rev. Dr. John S. Bonnell, minister of Fifth Avenue Presbyterian church, said he noticed a sharp change in the Soviet government's attitude between his first visit there 24 years ago and a return visit last summer. He went as a member of a group from the National Conference of Christians and Jews. "On my first visit there the Stalin regime was doing everything possible to stamp out religion," he said. "Churches were closed and turned into anti-religion museums." Under Premier Khrushchev, Dr. Bonnell said, it has been ordered there should be complete freedom of worship. The more than 50 orthodox churches in Moscow were packed every Sunday.

DAILY CROSSWORD

ACROSS 1. Young herring 2. Hastened 3. Stringed instrument 10. Grandfield weed (Bib.) 11. Eating place 12. Fragrance 14. Extraordinary ope (slang) 15. Kit 16. Man's nickname 17. Peck 18. Negative reply 19. Railroad car (colloq.) 22. Passport endorsement 24. Similar 25. Early invader of Great Britain 26. Mend, as a bone 27. East by south (abbr.) 28. Miss Francis 29. Exclamation 32. Subsiding 33. Facts 37. Pocketbook 38. Great Lake 39. Arrange systematically 40. Sandarae tree 41. Charges for services 42. Chums 43. Hastened 44. Stringed instrument 45. Grandfield weed (Bib.) 46. Eating place 47. Fragrance 48. Extraordinary ope (slang) 49. Kit 50. Man's nickname 51. Peck 52. Negative reply 53. Railroad car (colloq.) 54. Passport endorsement 55. Similar 56. Early invader of Great Britain 57. Mend, as a bone 58. East by south (abbr.) 59. Miss Francis 60. Exclamation 61. Subsiding 62. Facts 63. Pocketbook 64. Great Lake 65. Arrange systematically 66. Sandarae tree 67. Charges for services 68. Chums 69. Hastened 70. Stringed instrument 71. Grandfield weed (Bib.) 72. Eating place 73. Fragrance 74. Extraordinary ope (slang) 75. Kit 76. Man's nickname 77. Peck 78. Negative reply 79. Railroad car (colloq.) 80. Passport endorsement 81. Similar 82. Early invader of Great Britain 83. Mend, as a bone 84. East by south (abbr.) 85. Miss Francis 86. Exclamation 87. Subsiding 88. Facts 89. Pocketbook 90. Great Lake 91. Arrange systematically 92. Sandarae tree 93. Charges for services 94. Chums 95. Hastened 96. Stringed instrument 97. Grandfield weed (Bib.) 98. Eating place 99. Fragrance 100. Extraordinary ope (slang) 101. Kit 102. Man's nickname 103. Peck 104. Negative reply 105. Railroad car (colloq.) 106. Passport endorsement 107. Similar 108. Early invader of Great Britain 109. Mend, as a bone 110. East by south (abbr.) 111. Miss Francis 112. Exclamation 113. Subsiding 114. Facts 115. Pocketbook 116. Great Lake 117. Arrange systematically 118. Sandarae tree 119. Charges for services 120. Chums 121. Hastened 122. Stringed instrument 123. Grandfield weed (Bib.) 124. Eating place 125. Fragrance 126. Extraordinary ope (slang) 127. Kit 128. Man's nickname 129. Peck 130. Negative reply 131. Railroad car (colloq.) 132. Passport endorsement 133. Similar 134. Early invader of Great Britain 135. Mend, as a bone 136. East by south (abbr.) 137. Miss Francis 138. Exclamation 139. Subsiding 140. Facts 141. Pocketbook 142. Great Lake 143. Arrange systematically 144. Sandarae tree 145. Charges for services 146. Chums 147. Hastened 148. Stringed instrument 149. Grandfield weed (Bib.) 150. Eating place 151. Fragrance 152. Extraordinary ope (slang) 153. Kit 154. Man's nickname 155. Peck 156. Negative reply 157. Railroad car (colloq.) 158. Passport endorsement 159. Similar 160. Early invader of Great Britain 161. Mend, as a bone 162. East by south (abbr.) 163. Miss Francis 164. Exclamation 165. Subsiding 166. Facts 167. Pocketbook 168. Great Lake 169. Arrange systematically 170. Sandarae tree 171. Charges for services 172. Chums 173. Hastened 174. Stringed instrument 175. Grandfield weed (Bib.) 176. Eating place 177. Fragrance 178. Extraordinary ope (slang) 179. Kit 180. Man's nickname 181. Peck 182. Negative reply 183. Railroad car (colloq.) 184. Passport endorsement 185. Similar 186. Early invader of Great Britain 187. Mend, as a bone 188. East by south (abbr.) 189. Miss Francis 190. Exclamation 191. Subsiding 192. Facts 193. Pocketbook 194. Great Lake 195. Arrange systematically 196. Sandarae tree 197. Charges for services 198. Chums 199. Hastened 200. Stringed instrument 201. Grandfield weed (Bib.) 202. Eating place 203. Fragrance 204. Extraordinary ope (slang) 205. Kit 206. Man's nickname 207. Peck 208. Negative reply 209. Railroad car (colloq.) 210. Passport endorsement 211. Similar 212. Early invader of Great Britain 213. Mend, as a bone 214. East by south (abbr.) 215. Miss Francis 216. Exclamation 217. Subsiding 218. Facts 219. Pocketbook 220. Great Lake 221. Arrange systematically 222. Sandarae tree 223. Charges for services 224. Chums 225. Hastened 226. Stringed instrument 227. Grandfield weed (Bib.) 228. Eating place 229. Fragrance 230. Extraordinary ope (slang) 231. Kit 232. Man's nickname 233. Peck 234. Negative reply 235. Railroad car (colloq.) 236. Passport endorsement 237. Similar 238. Early invader of Great Britain 239. Mend, as a bone 240. East by south (abbr.) 241. Miss Francis 242. Exclamation 243. Subsiding 244. Facts 245. Pocketbook 246. Great Lake 247. Arrange systematically 248. Sandarae tree 249. Charges for services 250. Chums 251. Hastened 252. Stringed instrument 253. Grandfield weed (Bib.) 254. Eating place 255. Fragrance 256. Extraordinary ope (slang) 257. Kit 258. Man's nickname 259. Peck 260. Negative reply 261. Railroad car (colloq.) 262. Passport endorsement 263. Similar 264. Early invader of Great Britain 265. Mend, as a bone 266. East by south (abbr.) 267. Miss Francis 268. Exclamation 269. Subsiding 270. Facts 271. Pocketbook 272. Great Lake 273. Arrange systematically 274. Sandarae tree 275. Charges for services 276. Chums 277. Hastened 278. Stringed instrument 279. Grandfield weed (Bib.) 280. Eating place 281. Fragrance 282. Extraordinary ope (slang) 283. Kit 284. Man's nickname 285. Peck 286. Negative reply 287. Railroad car (colloq.) 288. Passport endorsement 289. Similar 290. Early invader of Great Britain 291. Mend, as a bone 292. East by south (abbr.) 293. Miss Francis 294. Exclamation 295. Subsiding 296. Facts 297. Pocketbook 298. Great Lake 299. Arrange systematically 300. Sandarae tree 301. Charges for services 302. Chums 303. Hastened 304. Stringed instrument 305. Grandfield weed (Bib.) 306. Eating place 307. Fragrance 308. Extraordinary ope (slang) 309. Kit 310. Man's nickname 311. Peck 312. Negative reply 313. Railroad car (colloq.) 314. Passport endorsement 315. Similar 316. Early invader of Great Britain 317. Mend, as a bone 318. East by south (abbr.) 319. Miss Francis 320. Exclamation 321. Subsiding 322. Facts 323. Pocketbook 324. Great Lake 325. Arrange systematically 326. Sandarae tree 327. Charges for services 328. Chums 329. Hastened 330. Stringed instrument 331. Grandfield weed (Bib.) 332. Eating place 333. Fragrance 334. Extraordinary ope (slang) 335. Kit 336. Man's nickname 337. Peck 338. Negative reply 339. Railroad car (colloq.) 340. Passport endorsement 341. Similar 342. Early invader of Great Britain 343. Mend, as a bone 344. East by south (abbr.) 345. Miss Francis 346. Exclamation 347. Subsiding 348. Facts 349. Pocketbook 350. Great Lake 351. Arrange systematically 352. Sandarae tree 353. Charges for services 354. Chums 355. Hastened 356. Stringed instrument 357. Grandfield weed (Bib.) 358. Eating place 359. Fragrance 360. Extraordinary ope (slang) 361. Kit 362. Man's nickname 363. Peck 364. Negative reply 365. Railroad car (colloq.) 366. Passport endorsement 367. Similar 368. Early invader of Great Britain 369. Mend, as a bone 370. East by south (abbr.) 371. Miss Francis 372. Exclamation 373. Subsiding 374. Facts 375. Pocketbook 376. Great Lake 377. Arrange systematically 378. Sandarae tree 379. Charges for services 380. Chums 381. Hastened 382. Stringed instrument 383. Grandfield weed (Bib.) 384. Eating place 385. Fragrance 386. Extraordinary ope (slang) 387. Kit 388. Man's nickname 389. Peck 390. Negative reply 391. Railroad car (colloq.) 392. Passport endorsement 393. Similar 394. Early invader of Great Britain 395. Mend, as a bone 396. East by south (abbr.) 397. Miss Francis 398. Exclamation 399. Subsiding 400. Facts 401. Pocketbook 402. Great Lake 403. Arrange systematically 404. Sandarae tree 405. Charges for services 406. Chums 407. Hastened 408. Stringed instrument 409. Grandfield weed (Bib.) 410. Eating place 411. Fragrance 412. Extraordinary ope (slang) 413. Kit 414. Man's nickname 415. Peck 416. Negative reply 417. Railroad car (colloq.) 418. Passport endorsement 419. Similar 420. Early invader of Great Britain 421. Mend, as a bone 422. East by south (abbr.) 423. Miss Francis 424. Exclamation 425. Subsiding 426. Facts 427. Pocketbook 428. Great Lake 429. Arrange systematically 430. Sandarae tree 431. Charges for services 432. Chums 433. Hastened 434. Stringed instrument 435. Grandfield weed (Bib.) 436. Eating place 437. Fragrance 438. Extraordinary ope (slang) 439. Kit 440. Man's nickname 441. Peck 442. Negative reply 443. Railroad car (colloq.) 444. Passport endorsement 445. Similar 446. Early invader of Great Britain 447. Mend, as a bone 448. East by south (abbr.) 449. Miss Francis 450. Exclamation 451. Subsiding 452. Facts 453. Pocketbook 454. Great Lake 455. Arrange systematically 456. Sandarae tree 457. Charges for services 458. Chums 459. Hastened 460. Stringed instrument 461. Grandfield weed (Bib.) 462. Eating place 463. Fragrance 464. Extraordinary ope (slang) 465. Kit 466. Man's nickname 467. Peck 468. Negative reply 469. Railroad car (colloq.) 470. Passport endorsement 471. Similar 472. Early invader of Great Britain 473. Mend, as a bone 474. East by south (abbr.) 475. Miss Francis 476. Exclamation 477. Subsiding 478. Facts 479. Pocketbook 480. Great Lake 481. Arrange systematically 482. Sandarae tree 483. Charges for services 484. Chums 485. Hastened 486. Stringed instrument 487. Grandfield weed (Bib.) 488. Eating place 489. Fragrance 490. Extraordinary ope (slang) 491. Kit 492. Man's nickname 493. Peck 494. Negative reply 495. Railroad car (colloq.) 496. Passport endorsement 497. Similar 498. Early invader of Great Britain 499. Mend, as a bone 500. East by south (abbr.) 501. Miss Francis 502. Exclamation 503. Subsiding 504. Facts 505. Pocketbook 506. Great Lake 507. Arrange systematically 508. Sandarae tree 509. Charges for services 510. Chums 511. Hastened 512. Stringed instrument 513. Grandfield weed (Bib.) 514. Eating place 515. Fragrance 516. Extraordinary ope (slang) 517. Kit 518. Man's nickname 519. Peck 520. Negative reply 521. Railroad car (colloq.) 522. Passport endorsement 523. Similar 524. Early invader of Great Britain 525. Mend, as a bone 526. East by south (abbr.) 527. Miss Francis 528. Exclamation 529. Subsiding 530. Facts 531. Pocketbook 532. Great Lake 533. Arrange systematically 534. Sandarae tree 535. Charges for services 536. Chums 537. Hastened 538. Stringed instrument 539. Grandfield weed (Bib.) 540. Eating place 541. Fragrance 542. Extraordinary ope (slang) 543. Kit 544. Man's nickname 545. Peck 546. Negative reply 547. Railroad car (colloq.) 548. Passport endorsement 549. Similar 550. Early invader of Great Britain 551. Mend, as a bone 552. East by south (abbr.) 553. Miss Francis 554. Exclamation 555. Subsiding 556. Facts 557. Pocketbook 558. Great Lake 559. Arrange systematically 560. Sandarae tree 561. Charges for services 562. Chums 563. Hastened 564. Stringed instrument 565. Grandfield weed (Bib.) 566. Eating place 567. Fragrance 568. Extraordinary ope (slang) 569. Kit 570. Man's nickname 571. Peck 572. Negative reply 573. Railroad car (colloq.) 574. Passport endorsement 575. Similar 576. Early invader of Great Britain 577. Mend, as a bone 578. East by south (abbr.) 579. Miss Francis 580. Exclamation 581. Subsiding 582. Facts 583. Pocketbook 584. Great Lake 585. Arrange systematically 586. Sandarae tree 587. Charges for services 588. Chums 589. Hastened 590. Stringed instrument 591. Grandfield weed (Bib.) 592. Eating place 593. Fragrance 594. Extraordinary ope (slang) 595. Kit 596. Man's nickname 597. Peck 598. Negative reply 599. Railroad car (colloq.) 600. Passport endorsement 601. Similar 602. Early invader of Great Britain 603. Mend, as a bone 604. East by south (abbr.) 605. Miss Francis 606. Exclamation 607. Subsiding 608. Facts 609. Pocketbook 610. Great Lake 611. Arrange systematically 612. Sandarae tree 613. Charges for services 614. Chums 615. Hastened 616. Stringed instrument 617. Grandfield weed (Bib.) 618. Eating place 619. Fragrance 620. Extraordinary ope (slang) 621. Kit 622. Man's nickname 623. Peck 624. Negative reply 625. Railroad car (colloq.) 626. Passport endorsement 627. Similar 628. Early invader of Great Britain 629. Mend, as a bone 630. East by south (abbr.) 631. Miss Francis 632. Exclamation 633. Subsiding 634. Facts 635. Pocketbook 636. Great Lake 637. Arrange systematically 638. Sandarae tree 639. Charges for services 640. Chums 641. Hastened 642. Stringed instrument 643. Grandfield weed (Bib.) 644. Eating place 645. Fragrance 646. Extraordinary ope (slang) 647. Kit 648. Man's nickname 649. Peck 650. Negative reply 651. Railroad car (colloq.) 652. Passport endorsement 653. Similar 654. Early invader of Great Britain 655. Mend, as a bone 656. East by south (abbr.) 657. Miss Francis 658. Exclamation 659. Subsiding 660. Facts 661. Pocketbook 662. Great Lake 663. Arrange systematically 664. Sandarae tree 665. Charges for services 666. Chums 667. Hastened 668. Stringed instrument 669. Grandfield weed (Bib.) 670. Eating place 671. Fragrance 672. Extraordinary ope (slang) 673. Kit 674. Man's nickname 675. Peck 676. Negative reply 677. Railroad car (colloq.) 678. Passport endorsement 679. Similar 680. Early invader of Great Britain 681. Mend, as a bone 682. East by south (abbr.) 683. Miss Francis 684. Exclamation 685. Subsiding 686. Facts 687. Pocketbook 688. Great Lake 689. Arrange systematically 690. Sandarae tree 691. Charges for services 692. Chums 693. Hastened 694. Stringed instrument 695. Grandfield weed (Bib.) 696. Eating place 697. Fragrance 698. Extraordinary ope (slang) 699. Kit 700. Man's nickname 701. Peck 702. Negative reply 703. Railroad car (colloq.) 704. Passport endorsement 705. Similar 706. Early invader of Great Britain 707. Mend, as a bone 708. East by south (abbr.) 709. Miss Francis 710. Exclamation 711. Subsiding 712. Facts 713. Pocketbook 714. Great Lake 715. Arrange systematically 716. Sandarae tree 717. Charges for services 718. Chums 719. Hastened 720. Stringed instrument 721. Grandfield weed (Bib.) 722. Eating place 723. Fragrance 724. Extraordinary ope (slang) 725. Kit 726. Man's nickname 727. Peck 728. Negative reply 729. Railroad car (colloq.) 730. Passport endorsement 731. Similar 732. Early invader of Great Britain 733. Mend, as a bone 734. East by south (abbr.) 735. Miss Francis 736. Exclamation 737. Subsiding 738. Facts 739. Pocketbook 740. Great Lake 741. Arrange systematically 742. Sandarae tree 743. Charges for services 744. Chums 745. Hastened 746. Stringed instrument 747. Grandfield weed (Bib.) 748. Eating place 749. Fragrance 750. Extraordinary ope (slang) 751. Kit 752. Man's nickname 753. Peck 754. Negative reply 755. Railroad car (colloq.) 756. Passport endorsement 757. Similar 758. Early invader of Great Britain 759. Mend, as a bone 760. East by south (abbr.) 761. Miss Francis 762. Exclamation 763. Subsiding 764. Facts 765. Pocketbook 766. Great Lake 767. Arrange systematically 768. Sandarae tree 769. Charges for services 770. Chums 771. Hastened 772. Stringed instrument 773. Grandfield weed (Bib.) 774. Eating place 775. Fragrance 776. Extraordinary ope (slang) 777. Kit 778. Man's nickname 779. Peck 780. Negative reply 781. Railroad car (colloq.) 782. Passport endorsement 783. Similar 784. Early invader of Great Britain 785. Mend, as a bone 786. East by south (abbr.) 787. Miss Francis 788. Exclamation 789. Subsiding 790. Facts 791. Pocketbook 792. Great Lake 793. Arrange systematically 794. Sandarae tree 795. Charges for services 796. Chums 797. Hastened 798. Stringed instrument 799. Grandfield weed (Bib.) 800. Eating place 801. Fragrance 802. Extraordinary ope (slang) 803. Kit 804. Man's nickname 805. Peck 806. Negative reply 807. Railroad car (colloq.) 808. Passport endorsement 809. Similar 810. Early invader of Great Britain 811. Mend, as a bone 812. East by south (abbr.) 813. Miss Francis 814. Exclamation 815. Subsiding 816. Facts 817. Pocketbook 818. Great Lake 819. Arrange systematically 820. Sandarae tree 821. Charges for services 822. Chums 823. Hastened 824. Stringed instrument 825. Grandfield weed (Bib.) 826. Eating place 827. Fragrance 828. Extraordinary ope (slang) 829. Kit 830. Man's nickname 831. Peck 832. Negative reply 833. Railroad car (colloq.) 834. Passport endorsement 835. Similar 836. Early invader of Great Britain 837. Mend, as a bone 838. East by south (abbr.) 839. Miss Francis 840. Exclamation 841. Subsiding 842. Facts 843. Pocketbook 844. Great Lake 845. Arrange systematically 846. Sandarae tree 847. Charges for services 848. Chums 849. Hastened 850. Stringed instrument 851. Grandfield weed (Bib.) 852. Eating place 853. Fragrance 854. Extraordinary ope (slang) 855. Kit 856. Man's nickname 857. Peck 858. Negative reply 859. Railroad car (colloq.) 860. Passport endorsement 861. Similar 862. Early invader of Great Britain 863. Mend, as a bone 864. East by south (abbr.) 865. Miss Francis 866. Exclamation 867. Subsiding 868. Facts 869. Pocketbook 870. Great Lake 871. Arrange systematically 872. Sandarae tree 873. Charges for services 874. Chums 875. Hastened 876. Stringed instrument 877. Grandfield weed (Bib.) 878. Eating place 879. Fragrance 880. Extraordinary ope (slang) 881. Kit 882. Man's nickname 883. Peck 884. Negative reply 885. Railroad car (colloq.) 886. Passport endorsement 887. Similar 888. Early invader of Great Britain 889. Mend, as a bone 890. East by south (abbr.) 891. Miss Francis 892. Exclamation 893. Subsiding 894. Facts 895. Pocketbook 896. Great Lake 897. Arrange systematically 898. Sandarae tree 899. Charges for services 900. Chums 901. Hastened 902. Stringed instrument 903. Grandfield weed (Bib.) 904. Eating place 905. Fragrance 906. Extraordinary ope (slang) 907. Kit 908. Man's nickname 909. Peck 910. Negative reply 911. Railroad car (colloq.) 912. Passport endorsement 913. Similar 914. Early invader of Great Britain 915. Mend, as a bone 916. East by south (abbr.) 917. Miss Francis 918. Exclamation 919. Subsiding 920. Facts 921. Pocketbook 922. Great Lake 923. Arrange systematically 924. Sandarae tree 925. Charges for services 926. Chums 927. Hastened 928. Stringed instrument 929. Grandfield weed (Bib.) 930. Eating place 931. Fragrance 932. Extraordinary ope (slang) 933. Kit 934. Man's nickname 935. Peck 936. Negative reply 937. Railroad car (colloq.) 938. Passport endorsement 939. Similar 940. Early invader of Great Britain 941. Mend, as a bone 942. East by south (abbr.) 943. Miss Francis 944. Exclamation 945. Subsiding 946. Facts 947. Pocketbook 948. Great Lake 949. Arrange systematically 950. Sandarae tree 951. Charges for services 952. Chums 953. Hastened 954. Stringed instrument 955. Grandfield weed (Bib.) 956. Eating place 957. Fragrance 958. Extraordinary ope (slang) 959. Kit 960. Man's nickname 961. Peck 962. Negative reply 963. Railroad car (colloq.) 964. Passport endorsement 965. Similar 966. Early invader of Great Britain 967. Mend, as a bone 968. East by south (abbr.) 969. Miss Francis 970. Exclamation 971. Subsiding 972. Facts 973. Pocketbook 974. Great Lake 975. Arrange systematically 976. Sandarae tree 977. Charges for services 978. Chums 979. Hastened 980. Stringed instrument 981. Grandfield weed (Bib.) 982. Eating place 983. Fragrance 984. Extraordinary ope (slang) 985. Kit 986. Man's nickname 987. Peck 988. Negative reply 989. Railroad car (colloq.) 990. Passport endorsement 991. Similar 992. Early invader of Great Britain 993. Mend, as a bone 994. East by south (abbr.) 995. Miss Francis 996. Exclamation 997. Subsiding 998. Facts 999. Pocketbook 1000. Great Lake

DAILY CRYPTOQUOTE — Here's how to work it!

One letter simply stands for another. In this sample A is used for the three L's, X for the two O's, etc. Single letters, apostrophes, the length and formation of the words are all hints, each day the code letters are different. A Cryptogram Question WAQYO FT LD ZOGOLTO EXEPLTY TOBYDEVA JRV DJTVRYPUF—EZF—TDL. Yesterday's Cryptoquote: ACCUSE NOT NATURE! SHE HATH DONE HER PART; DO THOU BUT THINE—MILTON. (© 1958 News Features Syndicate, Inc.)

ETTA KETT



MUGGS & SKEETER



OUR BOARDING HOUSE MAJOR HOOPLE



Religion In Russia Said Making Gains

MONTREAL (CP) — Religion in Russia, favored by a moderation in the Communist attitude since the death of Stalin, is slowly gaining ground, a Canadian-born New York clergyman said Sunday night. Rev. Dr. John S. Bonnell, minister of Fifth Avenue Presbyterian church, said he noticed a sharp change in the Soviet government's attitude between his first visit there 24 years ago and a return visit last summer. He went as a member of a group from the National Conference of Christians and Jews. "On my first visit there the Stalin regime was doing everything possible to stamp out religion," he said. "Churches were closed and turned into anti-religion museums." Under Premier Khrushchev, Dr. Bonnell said, it has been ordered there should be complete freedom of worship. The more than 50 orthodox churches in Moscow were packed every Sunday.



SAVE FIRESTONE HOME & AUTO CO. LTD. 187 Great George St. Ch'town 24 Central St., S'side



MON. - TUES. - WED. SPECIALS at S. A. McDONALD SECOND FLOOR GIRDLES reg. \$ 7.00 \$ 3.99 JUMPER DRESSES \$ 4.99 Cotton Crepe GOWN & PYJAMAS reg. \$ 2.98 \$ 1.49 Children's T.SHIRTS 59c to \$ 1.49 DRESSES to \$29.95 \$10.98 Children's CAR COATS \$ 3.99 Watch this space for our Weekly Specials

