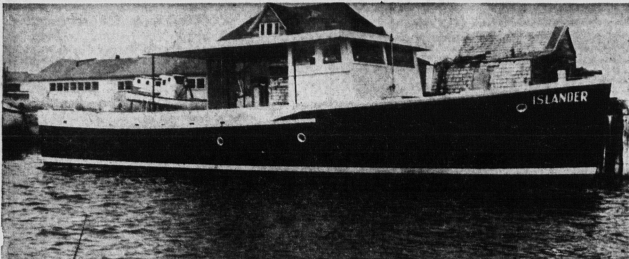


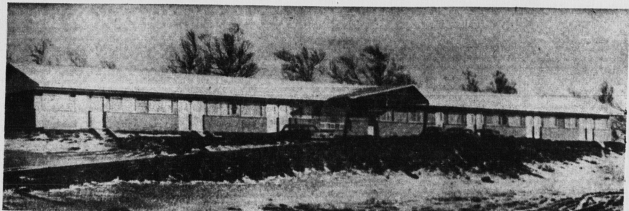
NEW BUSINESSES ESTABLISH, OLD EXPAND



NEW FIRE HALL HAS ASSEMBLY HALL FOR TOWN COUNCIL MEETINGS



THIS BOAT WAS BUILT AT ALBERTON FOR WEST INDIES LAST YEAR



WESTERN MOTEL ADDED NEW FACILITIES FOR TOURIST SEASON



FEDERAL BUILDING IS TYPICAL OF NEW BUILDINGS RECENTLY BUILT

NEW BUILDINGS RISE

Alberton's prosperity grows

By MRS. A. C. GREEN
Alberton's building program during 1963 was varied and interesting.
When Myricks Alberton Ltd. built to their store an extension which doubled the size of the main floor and permitted them to increase their stock, they gave to West Prince a general store of which any community might be justly proud. In the grocery department, which occupies the new wing, a wide variety of foodstuffs is to be found in the modern meat counter, the fruit and vegetable stand, the three dairy coolers and the three gondolas.

This century old business is now owned by Perley and Wesley Hardy.
The new fire hall, 50 feet by 36 feet, is an insulated steel building with accommodation for two fire trucks. There is a spacious assembly room for use of the Town Council and firemen. Two jail cells provide accommodation for those who run afoul of the law. The building is heated by forced air from a modern type overhead furnace.

Another new business enterprise, introduced by Douglas Rix and Wendell Weeks, is a mobile feed mill custom service for West Prince. Powered by its own diesel engine, the mill will grind grains and roughages, mix the ground material with vitamins and mineral feed fortifiers, and blend in molasses, according to the farmer's own specifications.
An air lifting device will carry grain from the bin into regular route and schedule has been established.
Adam Adams and David Pingarduk, probably the first Eskimos to visit Prince Edward Island, came to Alberton last June. They returned to their

northern home aboard the first boat ever to leave this West Prince County town en route to Hudson Bay.
The two long-liners were built by Alberton Industries Limited for the department of Northern Affairs.
They are a type of fishing boat suited to the needs of Eskimo fishermen and hunters of seals, whales and walrus and are part of a continuing program to develop the food resources of the Arctic.
The 46' Qilalaga is powered by an 85 h. p. diesel engine and an auxiliary diesel engine

for a generator provides electrical power for equipment and radio. It was bound for Chesterfield Inlet.
The 40' Nossiq is equipped with a 62 h. p. diesel engine with extra equipment for experimental halibut fishing. It was bound for the Port Barwell area.
STREETS PAVED
Several town streets were paved last year and the appearance of many more was greatly improved when scrubby growth and brush were removed and ditches cleaned. On several occasions
CONTINUED ON PAGE 9A

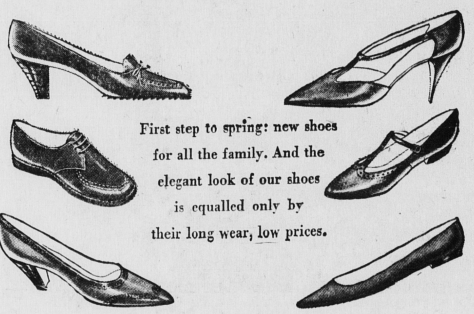
The Westerner Motel has increased its accommodation capacity by the construction of eight light housekeeping cottages. Each cottage is 20 feet by 15 feet and contains two bedrooms, kitchenette, living room and bath. Motel and cottages, located on an elevation of land overlooking an artificial lake, present a pleasing appearance at the western approach to the town.
The United Church Hall, completed during the summer, stands as a symbol of co-operation and inter-denominational goodwill. Six hundred man-hours spent in cutting and hauling donated lumber are only a small fraction of the free labor given during its erection. Men of the congregation were joined by Anglican Baptists, Presbyterians and Roman Catholic neighbors, as well as by men from other parts of the pastoral charge.
Designed by Mrs. James H. MacIntosh, the hall contains a large assembly room, minister's study, Sunday School classrooms and a spacious kitchen.
Many generous gifts were made towards its construction and furnishing.
At the exhibition grounds a large new cattle barn was erected during the summer.

SENIOR HOMES
Two winter works projects are under way in the town. A four unit senior citizens home is being constructed at the corner of Poplar and Dufferin Streets.
On the exhibition grounds construction of Jacques Cartier Memorial Arena has begun. Of steel frame construction and measuring 220 feet by 100 feet, it will be used for the annual exhibition, for a skating rink and other recreation its seating capacity will be 300.
At Alberton South a 100 foot by 30 foot transit shed is nearing completion. Of wood frame construction, the frostproof building will be used primarily for the assembly and inspection of farm products prior to their shipment by water.
An up to date one room school was built at Montrose during the summer. The 45 foot by 20

LePAGE'S

SHOE NEWS and views

for the family's spring

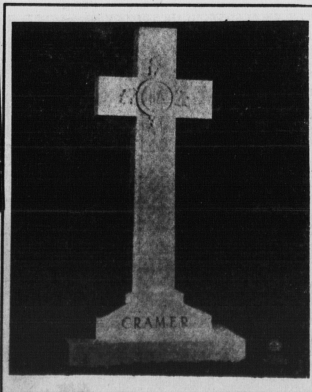


First step to spring: new shoes for all the family. And the elegant look of our shoes is equalled only by their long wear, low prices.

SERVING ISLANDERS FOR 44 YEARS

"The Home of Good Shoes Since 1920"

MEMORIAL CRAFTSMEN SINCE 1870 . . .



Monuments have been used since the days of early Hebrew history as a way to pay tribute to loved ones.

We take pride in the fact that monument building is a time-honored art, and we also take pride in the fact that our business was established shortly after Confederation.

Today, as in the ancient past, the use of monuments remains the same . . . your token of remembrance . . . your token of esteem to those you hold dear.

VERE BECK & SON LTD.

MONTAGUE

CHARLOTTETOWN

Service and Progress Go Hand n Hand . . .

For . . . years we have serviced the INSULATION NEEDS of P.E.I. and have progressed with it. Our faith in the future has always been and still is . . . UNLIMITED.



INSULATION is the scientific answer to retaining heat or cold where it is desired. This principle is used to hold heat captured in your baking oven and keeping cold imprisoned in your refrigerator. It is applied with great effectiveness also in keeping homes warm and cool in opposition to outside temperatures.

Let us show you how to save time, money and trouble. Remember we are an island firm interested in island people Call today!

Mr. Morais Manager
For Free Estimate Call Mr. Morais at 4-6275

ATLANTIC ROOFING and INSULATION CO.

18 Spring Park Road

Charlottetown

STYLES HAVE CHANGED



In 1948, Adella's Millinery, then just opening carried the quality line of millinery. Since then many changes have occurred both in national styling and local preference. Style has changed but not quality at Adella's.

But Not Quality

For the latest in styling consider these stunning spring hats from Adella's. Just the touch of spring you need for that special wardrobe. Come in today and choose while the selection is at its best.



Adella's Millinery

Grafton Street

Charlottetown