

Lobster cutting tool aids canning industry

OTTAWA (CP)—The National Research Council has come to the aid of the lobster canning industry with a new machine that may raise a few eyebrows among gourmets if it finds a market among large restaurants.

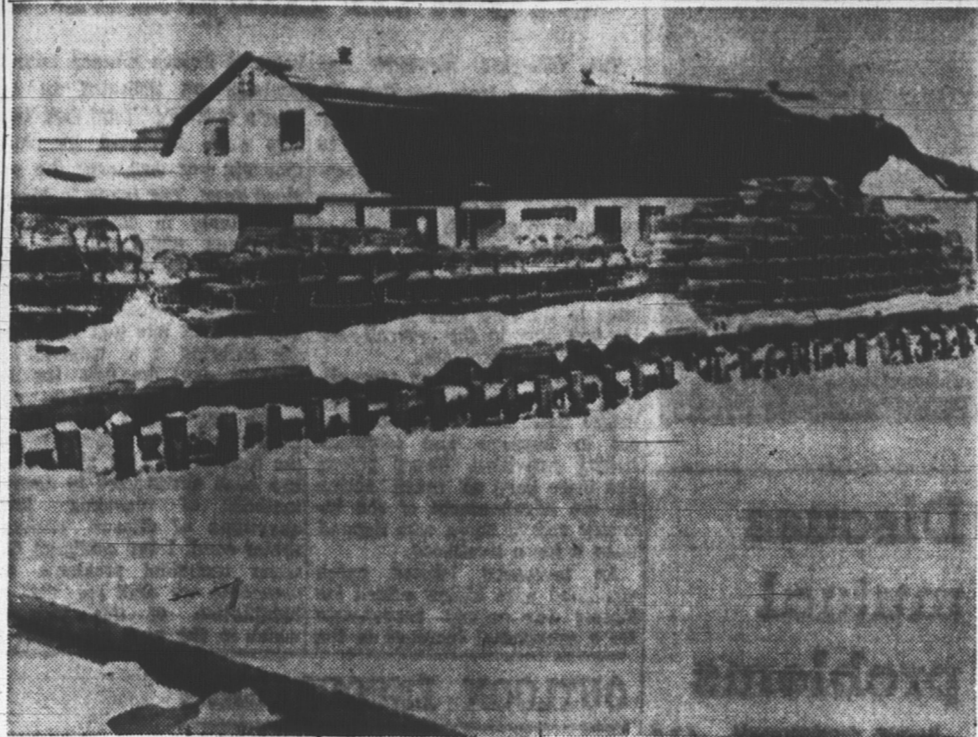
A special cutting tool to split lobster shells, it was designed by Joseph Featonby of NRC's mechanical engineering division after a request by the Prince Edward Island fisheries department for a machine to eliminate hand splitting in canning factories.

Use of operators with large knives to split cooked lobsters in present canning operations is not only slow but operators find it difficult to keep the choice meat of the claw intact in the process.

Mr. Featonby's machine eliminates that problem by carrying the lobster through a chamber with circular cutting edges top and bottom. The operator merely manipulates a guide to keep the lobster centred in the chamber and sets the adjustable top cutter to conform to the size of the lobster.

PICKS CLAWS
Claws are handled individually, the same as the lobster's body.

The machine will be sent to the P.E.I. fisheries department for tests in canneries. Mr. Featonby says a skilled operator should be able to process 300 to 400 lobsters an hour with it. If successful he says, the



JUDE'S POINT CANNING PLANT

JOSEPH FEATONBY of the National Research Council demonstrates a special cutting tool for splitting lobsters. As the lobster passes through the machine, circular cutting tools on the top and bottom

split the shell. The machine was designed primarily for canneries, but Mr. Featonby thinks it may find a market in large hotels and restaurants. (CP Photo)

machine could be sold for less than \$250 and "may find a market in large hotels and restaurants."

"The gourmet may object to being served split lobster, on the grounds that part of the fun of eating lobster is digging the meat out of the shell."

However, most people will likely welcome the chance to eat lobster without engaging in a wrestling match."

DOCTORS INCREASE
CHICAGO (AP)—The number of physicians per capita in the United States is increasing, the American Medical Association says. A report released Saturday said that at the end of 1965 there was one physician for every 681 persons. In 1960, the report said, there was one physician for each 737 persons.

SHIPBUILDERS - FISH PLANT OPERATORS

JABSCO PUMPS

General and Special Pump Systems

EASTECH

CONTRAL RANGES and POWER SUPPLIES
HYDRAULIC and PNEUMATIC CONTROL
GAS CHLORINATORS
VEEDER ROOT COUNTERS
INSTRUMENTATION and CONTROL

Industrial Suppliers

LIMITED

BOX 602 DARTMOUTH, N.S. 466-2461

See your Island Representative,
Major Waddell, Charlottetown Phone 892-1972

Known and respected by fishing interests throughout the Maritimes—

THE WHITE MOTOR CO.

of Canada Ltd.
(White/Superior Division)

Suppliers of:

- Chrysler Marine Engines
- Chrysler Outboard Engines
- Morse Controls
- Morse Red-Jacket Cables
- Morse Bilge Pumps
- White Superior Diesel Engines
- White Compressors
- Trailers and Boats
- Quincy Air Compressors

2023 Barrington Street, Halifax
Phone 422-6479

GOES FOR CHECKUP
ROME (AP)—Film actress Elizabeth Taylor entered a Rome clinic Wednesday. There had been reports that the actress was to undergo minor surgery, but her husband, Richard Burton said she was in only for a 24-hour checkup before beginning work on their new film, *The Taming of The Shrew*.

15 CHINESE DROWN
MACAO (AP)—Fifteen young Chinese trying to escape from China were drowned when their boats capsized April 5 in a storm 20 miles northeast of this Portuguese colony on the China coast. Fishermen reported Friday. The fishermen said a fishing junk from Macao picked up 11 survivors—10 boys and a girl.

WELLS OPEN UP
Australia's oil industry produced 10,000 barrels a day, 27 per cent of the country's consumption in its first two months.

Of Interest to the Commercial Fishing Industry—

WHITZMAN AND SONS LIMITED

stocks and sells
CHAIN • ANCHORS
WIRE ROPE

NEW AND USED STRUCTURAL STEEL AND PIPE

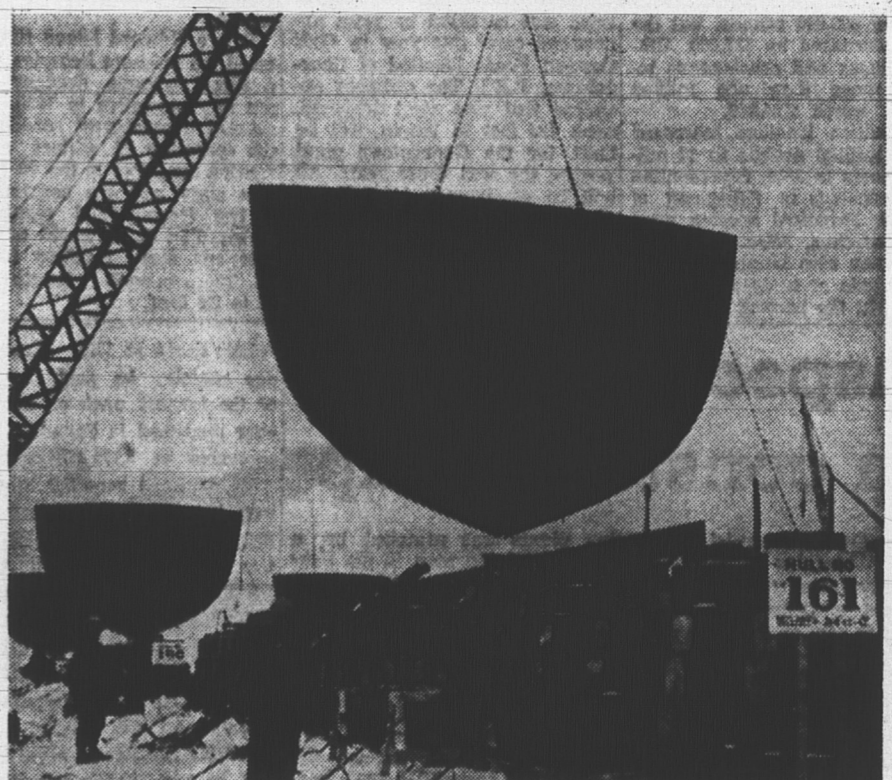
We can assist you with these needs at any time . . .
phone for prices today!

WHITZMAN AND SONS LIMITED
Phone 454-6463 and 454-1337, Kempt Road, Halifax

KEELS FOR FOUR STEEL FISHING TRAWLERS

For Eastern and Usen Fisheries of Souris, P.E.I.

HULLS 159, 160, 161 and 162
LAID IN SINGLE CEREMONY AT
PICTOU, AS SHOWN IN PHOTO BELOW



This represents the first of the 93' steel side trawlers built for the Island fishing industry.

In the seventeen months prior to this ceremony, FERGUSON INDUSTRIES LIMITED built and delivered to satisfied owners, SIX STEEL SIDE FISHING TRAWLERS. In addition one other trawler, Hull No. 157 is nearing completion and will be delivered to her owners soon. Scheduled for delivery later in the year is the 180' Federal Department of Fisheries vessel "Chedabucto"

Ferguson Industries specialize in construction of small and large steel fishing trawlers and maintenance and repairs of fishing fleets. Modern dry dock and repair facilities assure minimum delay to fishing trawler owners.

FERGUSON INDUSTRIES LIMITED

Shipbuilding, Repairs and Conversions. Manufacturers of Tanks, Parts for Asphalt Plants, and Special Steel Fabrications

Inquiries Invited—Phone Pictou 485-4313

Dealer Franchises Available on P. E. Island for

MERCURY OUTBOARD MOTORS

"North America's fastest selling and finest outboard."

"Sizes range from 3.9 h.p. to 110 h.p."

"The quietest, most powerful outboards ever built"

"All dealerships are exclusive in all areas"

All parts available from our Halifax stock.

MARITIME ACCESSORIES LIMITED
P. O. Box 270, Armdale, Halifax, N.S.
Distributors of MERCURY motors for the Atlantic Provinces.

Interested In Family and Community History?

Our Island cemeteries are noted for their beauty and dignity. Let our efforts be even greater in the preservation of our proud history in a permanent form.

There is no greater way of bespeaking your pride in your family name . . . preserving records . . . expressing your sentiment . . . than by a monument of beautiful Vermont marble, doubly guaranteed in writting.

VERE BECK & SON LTD.

Skilled Memorial Craftsmen Since 1870

Montague Charlottetown