

**RURAL  
CHURCHES  
KINGS**

**MURRAY RIVER** Pentecostal Church. Sunday, Jan. 16. Worship 11 a.m. and 7.30 p.m. Sunday School 10 a.m. Rev. Fred Day, minister.

**GEORGETOWN BAPTIST** Church. Sunday, Jan. 16. Sunday School 10 a.m. Worship 11 a.m. Gospel Service 7.30 p.m. Rev. Earle Smith, pastor.

**MONTAGUE Bible Chapel.** The Lord's Supper 9.30 a.m. Sunday School 10.45 a.m. Evening Service 7.30 p.m.

**MONTAGUE Baptist Pastorate.** Rev. A.G.J. Steeves, M.A., B.Ed., B.D., pastor. Montague: Sunday School 10 a.m. - Worship 11 a.m. - Evensong 7.30 p.m. Murray River: Sunday School 2 p.m. - Worship 3 p.m. Murray Harbor: Sunday School 2 p.m. - Worship 7.30 p.m. - Sturgeon: Sunday School 2.30 p.m. - Worship 1.30 p.m.

**GEORGETOWN Holy Trinity** Anglican Church. Sunday Jan. 16. Holy Communion 11 a.m. Sunday School 10 a.m. Rev. J. Stephen Sherrin, rector.

**MURRAY HARBOR** - Murray River United Church Pastoral Charge. Sunday, Jan. 16. Murray River: Worship 11 a.m. Church School 9.30 a.m. Murray Harbor: Worship 2 p.m. Church School 9.30 a.m. Little Sands: Worship 7 p.m.

**ANNANDALE** - Dundas United Baptist Pastorate. Sunday, Jan. 16. Lie Myrtle Ingersol, pastor. Annandale: Worship 11 a.m. Dundas: Church School 10 a.m. - Worship 7.30 p.m.

**CENTRAL KINGS Pastoral** Charge, the United Church. St. David's: Worship 11 a.m. - Church School 2 p.m. Dundas: Worship 2.30 p.m. - Annandale: Worship 7.30 p.m. Rev. M.R. Pocklington, minister.

**THE PRESBYTERIAN** Church. Sunday, Jan. 16. Murray Harbor North: Church School 10 a.m. - Worship 11 a.m. Murray Harbor South: Church School 9 p.m. - Worship 9 p.m. Peter's Road: Church School 6.30 p.m. - Worship 7.30 p.m. Rev. M. Carl Currie, minister.

**MONTAGUE Pastoral Charge,** the United Church. Sunday, Jan. 16. Lower Montague 9.45 a.m. - Montague 11 a.m. - Sturgeon 2.30 p.m. Adult Study Group, Montague 7.30 p.m. Rev. Russell F. Burns, minister.

**SOURIS** - Bay Fortune United Churches. Worship: Bay Fortune 11 a.m. - Souris 7 p.m. Rev. F.E. Phinney, minister.

**UPTON Gospel Chapel,** Sunday, Jan. 16. Sunday School 10 a.m. - Worship 11 a.m. - Gospel Service 7.30 p.m. Ronald Harris guest speaker.

**MONTAGUE Church of Christ.** Sunday School 10 a.m. - Worship 11 a.m. Delroy Brown, guest speaker. Congregational meeting following the regular service.

**MONTAGUE Pastoral Charge,** the Presbyterian Church. St. Andrew's, Cardigan: Worship 11 a.m. - St. Andrew's, Lorne Valley: Worship 2.30 p.m. - St. Andrew's, Montague: Church School 10.00 a.m. - Worship 7.30 p.m. Mid-Week Bible Study Wednesday, Jan. 19 at 7.30 p.m. Rev. Basil Lowery, B.A., B.D., minister.

**MURRAY HARBOR Church of** Christ. Bible School 10 a.m. - Worship and the Lord's Supper 11.00 a.m. - Evening Service 7.30 p.m. All services led and special music by members of the Maritime Christian College. David Weale, minister.

**FREE CHURCH of Scotland.** Worship: Murray River 11 a.m. - Sunday School 2 p.m. - Bangor 2 p.m. - Belle River 4.30 p.m. Birch Hill 7.30 p.m. Rev. Ewen E. MacDougall, minister.

**QUEENS**

**THE PRESBYTERIAN** Church, St. John's, Belfast. Sunday, Jan. 16. Service of Worship 11 a.m. Rev. Donald Nicholson, minister.

**THE PRESBYTERIAN** Church Wood Islands. Sunday, Jan. 16. Service of Worship 3.00 p.m. Rev. Donald Nicholson, minister.

**NORTH RIVER Baptist** Pastorate. Rev. T.W. Howard, minister. Worship: Fairview 11 a.m. - North River 2 p.m. - Long Creek 7.30 p.m.

**BROOKFIELD PASTORAL** Charge, the Presbyterian Church. Sunday, Jan. 16. Worship: Glasgow Road 11 a.m. - Huster River 2.30 p.m. - Brookfield 7.30 p.m. Clair MacLeod, student minister. Rev. Basil Lowery, interim-moderator.

**CENTRAL Parish,** the Presbyterian Church. Canoe Cove: Worship 11 a.m. - Clyde River: Worship 3 p.m. Mr. Roydon Reynolds preaching. Church Hill: Worship and Hymn Sing with special music 7.30 p.m. - Nine Mile Creek: Tuesday, Jan. 18 special Week of Prayer service 8 p.m. - Annual Meeting 9 p.m.

**WINSLOE United Pastoral** Charge. Highfield. Combined worship and Sunday School 9.30 a.m. - Winsloe South 11 a.m. - Princetown Road 7.30 p.m. Rev. T.R. Goudge, minister.

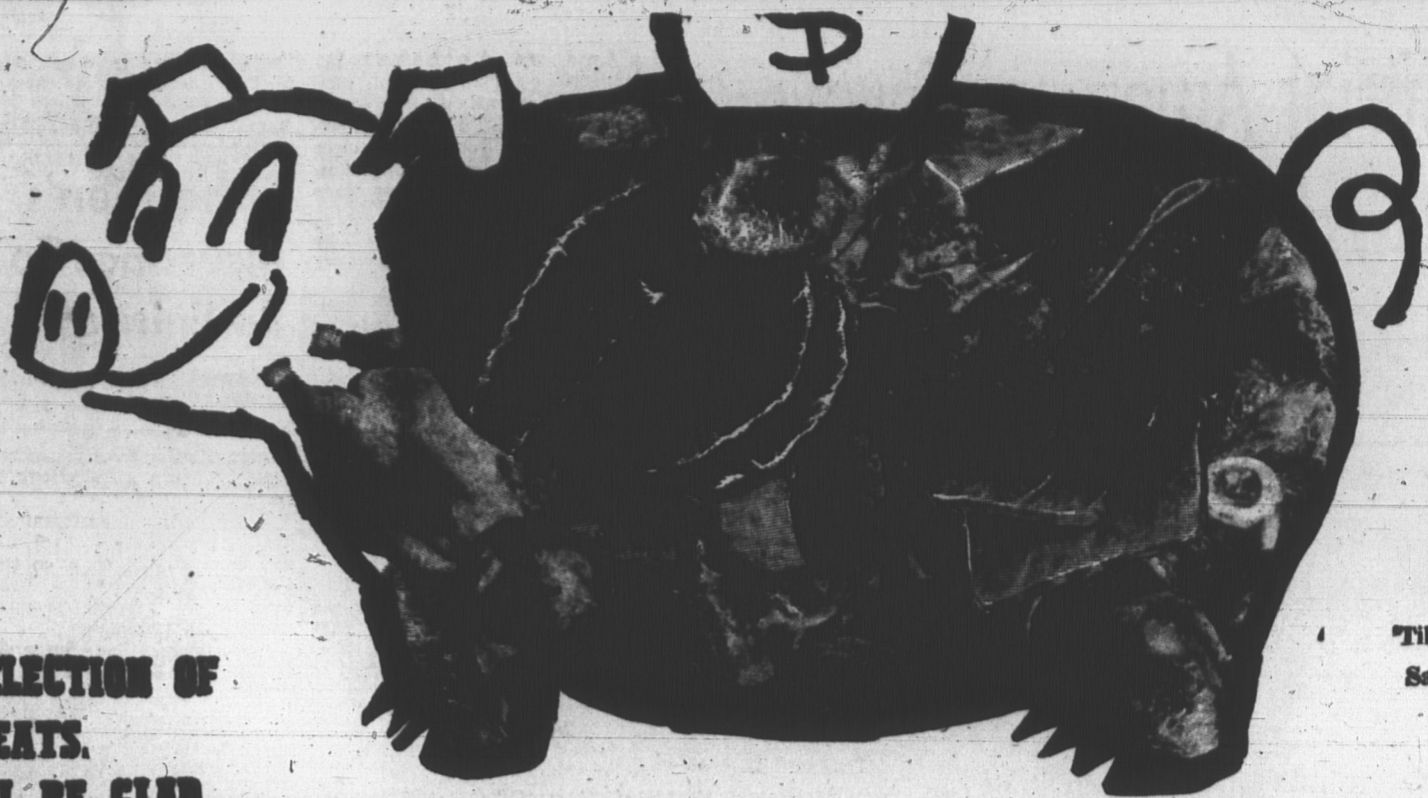
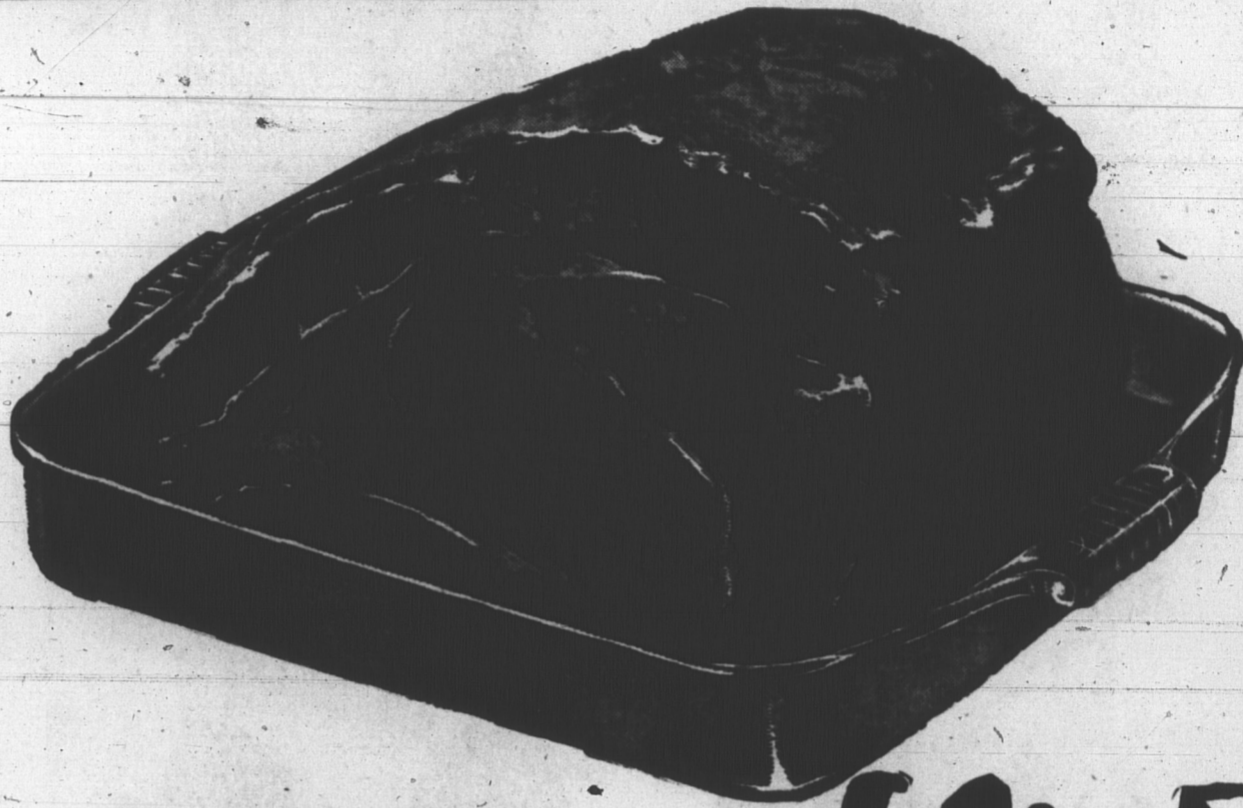
**HUNTER RIVER United** Church Pastoral Charge. Sunday, Jan. 16. North Wiltshire 11

# MONEY SAVING MEATS

PLAN YOUR MEALS AROUND OUR BIG SELECTION OF TASTY AND TENDER LOW-COST MEATS. OUR MEAT DEPARTMENT WILL BE GLAD TO PREPARE SPECIAL CUTS AT YOUR REQUEST.

P.E.I. SELECTED BEEF  
SHOULDER or BLADE

**ROAST  
49<sup>c</sup>**  
LB.



Special  
Prices  
Effective  
Til Closing Time  
Sat. Jan. 15th

CANADA PACKERS RINDLESS  
**Sunset Bacon 65<sup>c</sup>** LB.

P.E.I. ROASTING  
**Pork Loin** LB. 73c

LOIN OR RIB  
**Pork Chops** LB. 79c

SWEET PICKLED  
**Neck Ribs** 4 LBS. 59c

FRESH  
**Brisket Beef** LB. 29c

**CLOVER FARM TOMATO SAUCE**

**BEANS with PORK** 2 20 OZ. TINS 35c

**ROBIN HOOD ROLLED OATS** 5 LB. BAG 69c

**CORDON BLEU CHICKEN** 2 7 OZ. TINS 79c

**CRISPY FLAKE SHORTENING**

**2 1 LB. PKGS. 63<sup>c</sup>**

**CLOVER FARM BARTLETT PEARS** 20 OZ. TIN 29c

**NEW STOCK FARMKIST PRUNES** 1 LB. PKG. 33c

**LOWNEY'S (DELICIOUS) CREAMY CARMELS** 14 OZ. PKG. 43c

**MONARCH SALAD DRESSING** 2 8 OZ. JARS 39c

**MONARCH TABLE SYRUP** 2 16 OZ. BOTS. 69c

**CHOICE BEEF ROAST**

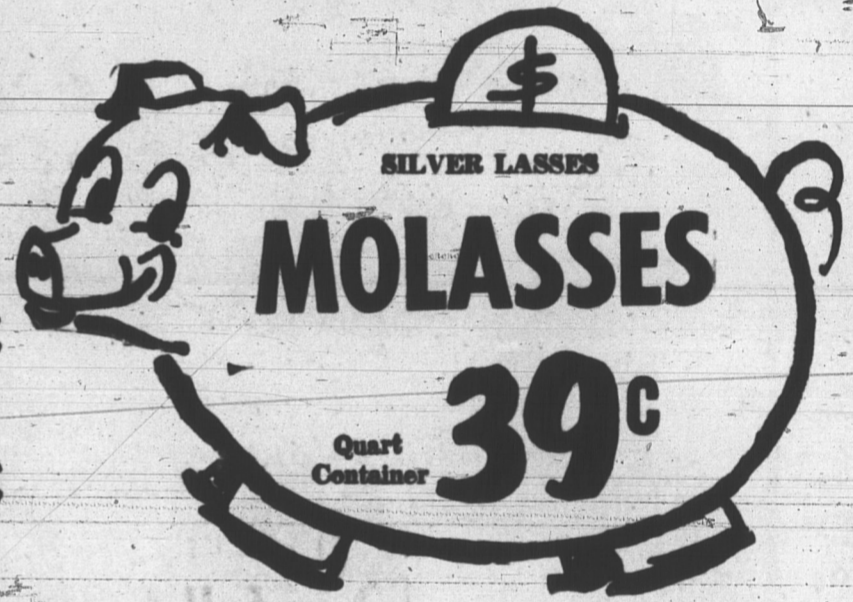
**PRIME RIB** LB. 63<sup>c</sup>

**BARBOUR'S PEANUT BUTTER** 16 OZ. JAR 45c

**KELLOGG'S CORN FLAKES** 12 OZ. PKG. 29c

**BROWN'S JUMBO ASSORTED COOKIES** 2 LB. PKG. 69c

**CLOVER FARM MARGARINE** 3 1 LB. PKGS. 89c



**MAPLE LEAF FIRST GRADE BUTTER** LB. 59<sup>c</sup>

**MEXICAN SWEET, JUICY ORANGES** 5 LBS. 59<sup>c</sup>

<b>RED FIRM Grapes</b>	<b>NO. 1 Parsnips</b>	<b>NO. 1 CANADIAN Onions</b>
2 LB. 39 <sup>c</sup>	LB. 17 <sup>c</sup>	2 LB. 19 <sup>c</sup>

**HEINZ COOKED SPAGHETTI** 2 20 OZ. TINS 47<sup>c</sup>

**HEINZ SWEET MIXED PICKLES** 32 OZ. JAR 59<sup>c</sup>

**SUNNYVALE (Sliced or Halves) PEACHES** 28 OZ. TIN 45<sup>c</sup>

**WAGSTAFFE JAM RASP. OR STRAWBERRY** 24 OZ. BOT. 55<sup>c</sup>

**COLGATE'S DENTAL CREAM** FAMILY SIZE 99<sup>c</sup>

**FROZEN FOODS**

**VALLEY FARM FRENCH FRIES** 2 9 OZ. PKG. 25c

**BIRDS EYE ORANGE JUICE** 2 6 OZ. TINS 49c

**NON FOODS**

**PLASTIC DRAIN BOARD TRAYS** EACH 69c

**PLASTIC DISH DRAINERS** EACH 69c

**BUCKLEY'S COUGH SYRUP** SMALL 69c

**JACK AND JILL COUGH SYRUP** SMALL 69c

**JOHNSON'S (WITH 25% EXTRA) BABY POWDER** SMALL 39c

**CLOVER FARM**