

**Few Reluctant As 198 Sail For Bleak Isle**

**SOUTHAMPTON, Eng-** land (Reuters) — The Danish ship *Bombin* has sailed from here for the bleak South Atlantic island of Tristan da Cunha, carrying 198 persons back to the homes from which they were driven two years ago by a volcanic eruption.

The Tristan da Cunha refugees were returning to their storm-lashed island at their own request after failing to adjust to life in busy Britain.

In the ranks of the islanders were some youngsters who would have preferred to stay in Britain, where they could enjoy rock 'n' roll, movies and television. They were going along because ordered by their parents to do so—but some of them vowed to return as soon as they are able.

Rosemary Green, 17, who had become enamored of the island, said:

"I'll be back for good when I'm 21 and my own boss."

Rosemary and other teenagers took along transistor radios, record players and records, comic books and paperback novels.

**Soviet Trawlers Quitting Banks**

**GLOUCESTER, Mass. (AP)**—The Soviet fishing fleet on Georges Banks, which reached about 300 vessels in August and September, has now been reduced to 18 vessels—11 stern trawlers and five support ships. The U.S. bureau of commercial fisheries has reported.

Russell T. Norris, acting regional director, said the fleet started leaving Georges Banks early in October. Those remaining were observed in an area south of Nova Scotia—one or two having been seen on Georges Banks.

If the Russians followed the same pattern as in the past only an occasional vessel will be seen until next spring.

From Jan through September, the Soviet fleet appeared to be fishing a great deal harder than in previous years, Norris said.

And the Soviet fishing captains seemed happy about their catches.

**Japan Is Leader In Shipbuilding**

**LONDON (AP)** — Japan is listed as the world's busiest shipbuilding nation in Lloyd's Register returns published here.

Japanese yards had 115 vessels totalling 1,635,507 gross tons under construction at the end of September. This is a record for Japan and represents nearly 18 per cent of world tonnage under construction.

Britain had 155 vessels with a gross tonnage of 1,443,022 under construction — about 16 per cent of world tonnage.

Sweden and Norway also established records for shipping under construction, with 63 vessels of 863,065 tons and 81 vessels of 489,575 tons respectively.

**Ford Shares To Be Sold**

**NEW YORK (AP)** — A block of 4,000,000 shares of Ford Motor Company worth about \$306,000,000 at current prices is scheduled to be sold to the public late next month.

The Ford Foundation, a private non-profit institution, said Tuesday it is making arrangements for the sale.

This would be the sixth such sale of Ford Motor stock by the foundation, which received its assets almost entirely from gifts and bequests of Henry Ford, founder of the motor company and his son, Edsel Ford.

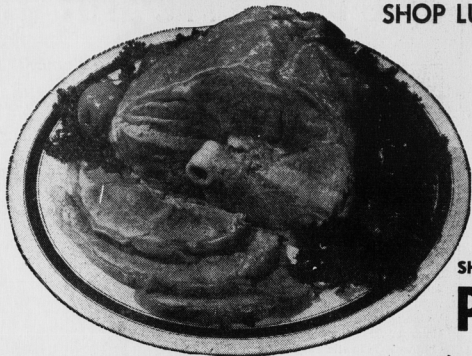
Until seven years ago, when the foundation offered 10,200,000 shares of Ford stock, the auto company was one of the largest U.S. industrial enterprises still entirely family-owned.

The 27-year-old foundation, incorporated for charitable, educational and scientific purposes, aims to advance human welfare through grants to non-profit institutions and organizations for research, education and demonstration and experiments.

**IT'S 400 YEARS** — April 23, 1964, is the 400th anniversary of the birth of William Shakespeare.



SHOP LUCKY DOLLAR STORES Today & Every Day



FRESH  
**ROASTING PORK** LB.

**39<sup>c</sup>**

SHOULDER  
**PORK STEAK** LB. **59<sup>c</sup>**

M. L. SMOKED HALVES COTTAGE  
**ROLL... lb. 69<sup>c</sup>**

BREASTS OF  
**Chicken lb. 59<sup>c</sup>**

FROZEN  
**Scallops lb. 69<sup>c</sup>**

FROZEN BEEF  
**Liver ... lb. 39<sup>c</sup>**



VALU-PAK 1 LB. BAG SCOTTIES CASE OF 48 BAGS  
In The Shell **POTATO CHIPS** **39<sup>c</sup>** **1.89**

Herford Corned  
**BEEF**  
2—12 oz. Tins  
**89<sup>c</sup>**

Island Cheddar  
**CHEESE**  
Per Lb.  
**49<sup>c</sup>**

Maple Leaf  
**Ched-R-Spred**  
16 oz. Jar  
**55<sup>c</sup>**

Q.T.F. Crushed  
**P'APPLE**  
15 oz. Tins  
**5 FOR \$1**

HEINZ TOMATO  
**JUICE** 3 48 OZ. TINS **\$1**  
HEINZ TOMATO  
**KETCHUP** 3 15 OZ. BTL. **\$1**  
CARNATION  
**MILK** 3 TALL TINS **49c**

**DUNCAN HINES DELUXE CAKE MIXES**  
White, Devil Spice, Coconut, Lemon, Fudge, Caramel, Choc, Mint, Cherry, Orange.  
**39<sup>c</sup>** pkg.

**KING COLE STANDARD TEA** 1/2 LB. BAG **55<sup>c</sup>**  
**CATELLI Macaroni** 1 LB. **19c**

**FROZEN FOODS**

● coats  
● dresses  
● ear coats  
● strides  
● blouses  
● skirts  
● ski jackets  
● Island furriers  
79 Grafton St.  
Dial 2-1274

**McCain's Frozen**  
**PEAS** 12 OZ. **19<sup>c</sup>**  
**EAST PAK**  
**Cod Fillets** 16 OZ. **31<sup>c</sup>**  
**McCain's**  
**French Fries** 2 LB. POLY WITH 6 OZ. EXTRA **53<sup>c</sup>**

**SPECIAL OF THE WEEK**  
**GRAVES APPLE—20 OZ. TINS**  
**JUICE 6 \$1**  
TINS FOR

WHITE SWAN TOILET  
**TISSUE** 4 ROLLS FOR **49c**

FABRIC SOFTNER  
**FLEECY** 32 OZ. **39c**

JOHNSON  
**BAND AIDS** 12 MED. **49c**

KELLOGG'S—12 OZ. PKG.  
**CORN FLAKES** **29c**

CREST GIANT  
**TOOTH PASTE** **59c**

BERRYLAND  
**APRICOTS** 2 15 OZ. TINS **49c**

BUDGET  
**WAX PAPER** 100 Ft. **31c**

VELVEETA  
**CHEESE** 2 1/2 LB. PKGS. **69c**

**FRESHEST PRODUCE**

**HILLCREST BRAND N.B. Cee Macintosh Apples**  
2—5 lb. Cello Bags  
**10 Lbs. 59<sup>c</sup>**

Emperor  
**Grapes** 2 lbs. **39<sup>c</sup>**

South African  
**ORANGES** 5 LB. CELLO **69c**

ONT. NO. 1 LARGE  
**ONIONS** 2 LB. CELLO **17c**

SALE  
DAYS  
OCT. 30-31  
NOV.  
1-2



**PARTNERS IN YOUR COMMUNITY**