

Mayor Says Hall Posing Problem

The question arose last night at the 49th annual convention of the Prince Edward Island Women's Institute as to whether Montgomery Hall, the Prince of Wales College girls' residence, referred to as the "Institute's hall" would become a "problem child."

Charlottetown Mayor A. W. Gaudet raised the question as he welcomed the delegates on behalf of the city by stating that during the last year "we have witnessed a complete commercializing of Montgomery Hall."

He said the fact that this was happening was drawn to the attention of the provincial government as it was thought no other body should be more interested. However, Mayor Gaudet, said "we were not successful" in asking the Women's Institute members to consider the matter.

Mayor Gaudet pointed out that Montgomery Hall was built by the people of the province and subsidized by the provincial government. It is in open competition with other organizations, which try to make a livelihood in an all too short season.

Also bringing greetings, was Hon. Andrew B. MacRae, minister of agriculture, who welcomed the members on behalf of the provincial government.

He told the delegates that the Women's Institute through-out the province were carrying on home making in an excellent manner and they were seeking an excellent example. He said they were also doing a remarkable job in regard to leadership.

Mr. MacRae paid special tribute to Mrs. Adele Townsend, Holo Bay, who played "The Lady's Slipper" in the W.I. Tweedsmuir competition last year and her play "For the Love of a Horse" won second place in a Canadian playwriting competition this year.

Mr. MacRae said that Mrs. Townsend was a successor to Lucy Maud Montgomery and that she was a credit to the Women's Institute.

Mr. Townsend's play "The Lady's Slipper" was presented at the meeting last night. It was held in Prince of Wales College auditorium.

The guest speaker for the evening was Dr. Helen Crockett, Dartmouth, N.S., folklorist who told of the many interesting examples of folklore and history she has picked up in her travels.

Also speaking briefly was J. W. Woodcock, president of the Canadian Council of 4-H Clubs and Mrs. Leslie Ramsay who gave some comments on drama.

The two-day convention continues today with both morning and afternoon sessions.

GEORGETOWN - Joseph Clarence Condon, Murray Harbor North, pleaded guilty to possession of 14 undervalued lobsters before Kings County Magistrate James B. Johnston, Q.C. at Georgetown yesterday and was fined \$10 and costs.

Mr. Condon pleaded not guilty to four other charges of possession of undervalued lobsters. In one of the charges involving 14 small lobsters evidence was taken and the accused fined \$10 and the other three cases involving 14, 46, and 22 small lobsters was adjourned to July 18.

Lawrence Wallace MacLeod, Allison, pleaded guilty and was fined \$10 and costs for driving while impaired. Deputy Attorney-General J. Arthur McCue represented the Crown in these cases and in all other cases before the court yesterday.

Malcolm Paul Martell, Georgetown represented by S. H. Hession had a charge of breaking and entering Allen's Cantina in Georgetown and committing an indictable offence therein adjourned to July 18. The accused is out on bail of \$1,000 with two sureties of \$500 each.

Borden Mann, Greek River charged with impaired driving and represented by Mr. Hession had his case adjourned to July 18 while Harry Daniel Murphy, Montague also represented by Mr. Hession and charged with impaired driving was granted an adjournment to July 18.

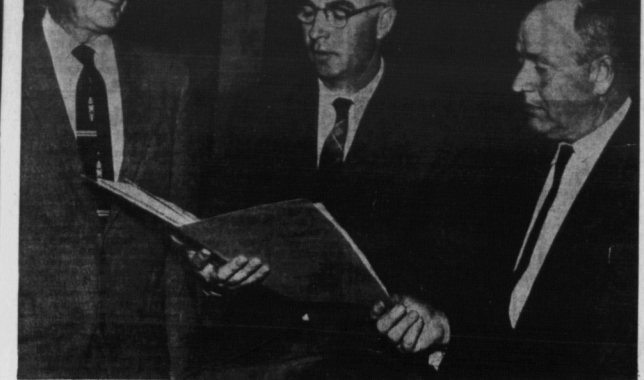
A charge of causing a disturbance by being drunk against

Joseph Campbell, Halifax, N.S., who has been spending a vacation with his brother-in-law Walter O'Brien and Mrs. O'Brien, 171 King Street, Charlottetown received the sad news of the unexpected death of his wife, following a brief illness. She was 56.

Mr. Campbell, accompanied by his son Faber, and his wife's sister, Mabel O'Brien and Clarence Sinnott left immediately for Halifax.

Besides her husband Mrs. Campbell is survived by five daughters and one son; also a sister, Miss Mabel O'Brien, and Mrs. P. R. Sinnott, Bristol, P. E. I., two brothers, John R. O'Brien, Bristol and Walter O'Brien, Charlottetown.

Funeral arrangements have not been completed, but it is understood that burial will take place in Morrell.



CO-OPERATIVE UNION LTD. ELECTS SLATE

Kenneth MacLean, Central Lot 16 centre, was re-elected as president of the Co-operative Union Ltd., at the annual meeting, last night at Birch Court. With Mr. MacLean as vice-president, Louis O'Keefe, Clinton (left) and R. A. Handran, Tignish, re-elected recording secretary, as they prepare for the meeting early next evening.

WI Commences Annual Meeting

Women's Institute members from across the province gathered at Prince of Wales College yesterday for the first day of the 49th annual convention of the Prince Edward Island Women's Institute, provincial president, presided over the morning session and welcomed the delegates to the convention.

Mrs. Peter F. Gallant, Plunkville, in her citizenship report, urged every institute branch to take more interest in making studies of local government, stressing its importance in order to become better minded citizens and more able to voice opinions in matters of public affairs.

"Organized groups can be influential in forming public opinion," Mrs. Gallant pointed out.

The report stated that many institutes were active in community improvement. Some projects undertaken included cleaning up individual property.

Members, entering beautification contests, renovating historical sites, erecting picnic sites, and decorating schools.

The United Nations and "Letter friends" report, delivered by Mrs. Reginald MacEwen, North River, outlined such projects as participation in "Howlers" for UNICEF, the making of layettes and gathering of used clothing.

Seven individual institutes have "adopted" children, a new noted, and St. Institutes are contributing to the upkeep of the adopted WI boy, Valenak.

Mrs. MacEwen reported appearing on the institute program on radio and attending a citizenship course, the secretary on behalf of this committee.

She encouraged the members to broaden their horizons by making new contacts with other institutes and by means of links or individual pen pal correspondence.

Mrs. R. L. Buge, St. Peter's Bay, gave the treasurer's report.

Pollution Meet Today

A meeting of civic and health officials will be held this morning to discuss the problem of harbor pollution caused by sewage disposal in harbor waters.

The meeting is to be held at the Health Centre, Prince St., Charlottetown. It is expected to be closed to the public.

Dr. Hubert McNeill, minister of health; Mayor A. W. Gaudet, Charlottetown; sewer and water committee chairman, Edmund Arsenault; city engineer, Norman Stewart; city comptroller, John Butler and representatives of the city water commission are expected to attend.

Dr. Burton Howatt, provincial health officer, said nothing specific would be discussed, but the meeting would take the form of a general discussion on the whole problem.

Golf Tourney Goes Friday At City Club

Due to playing conditions on The Summerside Golf Club's course the annual ladies' provincial golf meet will be held at the Charlottetown course starting Friday afternoon at 1 o'clock.

This was announced last night by officials for the meet after receiving word from Summerside that the course there was unfit for tournament play due to the heavy rain yesterday and the previous wet weather.

Officials said the draw for the tourney will be announced tomorrow morning. The tourney which is a two-day affair will continue on Saturday with tee-off time at 10 a.m.

Provincial Rose Show Plans Await Favorable Weather

The date of the Provincial Rose Show has been tentatively set for Thursday, July 19 in the Paradise WI Hall. It was announced at the meeting held recently to finalize plans for the show.

The date of the show will depend on the weather and with favorable weather the planning committee believes the show will be even larger than last year.

The "winning committees were organized," Mrs. Arthur Spelman, Mrs. Aubrey Fould and Mrs. Allison West, are in charge of setting up the hall in preparation for the show. Mrs. Arthur Trewin, setting up the display of prizes; Mrs. E. W. Cook and Mrs. Henry Douglas, will be in charge of entries while Mrs. George Newman and Mrs. Cummings will assist the exhibitors in placing their entries.

Mrs. Whitfield Yee and Mrs. Furrass Matheson were appointed to accompany the judges, Mrs. D. J. McAtkiss will be in charge of admissions.

Mrs. Frank Ross, chairman of the Provincial Rose Show, announced that contributions to the prize list had already been received, and that last year's donors had been contacted. She said the donors had been contacted.

WI Commences Annual Meeting

Women's Institute members from across the province gathered at Prince of Wales College yesterday for the first day of the 49th annual convention of the Prince Edward Island Women's Institute, provincial president, presided over the morning session and welcomed the delegates to the convention.

Mrs. Peter F. Gallant, Plunkville, in her citizenship report, urged every institute branch to take more interest in making studies of local government, stressing its importance in order to become better minded citizens and more able to voice opinions in matters of public affairs.

"Organized groups can be influential in forming public opinion," Mrs. Gallant pointed out.

The report stated that many institutes were active in community improvement. Some projects undertaken included cleaning up individual property.

Canadian Teachers College To Hold Annual Here Monday

The problem of creating closer relationships between the public, business and the schools will be one of the key topics under discussion when the Canadian College of Teachers meets July 16 and 17 at Prince of Wales College, Charlottetown.

Sixty-two delegates will be present at the fifth annual meeting of this "learned society" which is the teaching profession's only teachers with established academic records and experience are admitted to membership.

KEYNOTE SPEAKER
Dr. Fred E. Whitworth, chief of the education division of the Dominion Bureau of Statistics, will be one of the keynote speakers with a talk on "Education and manpower."

Other speakers will include two professors of education from McGill University's Institute of Education, C. Wayne Hall and D.C. Munroe; Dr. Kenneth MacEwen, superintendent of schools for Charlottetown; Dr. Floyd G. Robinson of Ottawa, director of research for the Canadian Teachers' Federation; and Miss Gene Morison of Halifax.

Annual banquet speaker will be Dr. Frank MacKinnon of Charlottetown, whose topical address "The Politics of Education" raised a furor in Canada's education circles two years ago.

Other island delegates to the meeting include Mrs. Harriette Dover, Miss Mabel Matheson and Miss Helen Yeo, all of Charlottetown.

LOCAL BRIEFS

Yacht Club Races Slated This Evening
Boats from the Charlottetown Yacht Club will stage a regatta tonight in the harbor off Victoria Park. The races will start at 7:30.

The public is invited to attend the races and if the weather is successful the racing committee plans to set up a series of races, to be run on a point system, giving the top driver a trophy at the end of the season.

Tonight's races will be for outboard cruisers and runabouts only, with the 100-hp. boats will be classed 1A, 1B and 1C, and under 40 h.p. and under 40 h.p., outboard cruisers and the 100-hp. boats.

Boats in the first four classes will race two heats of two laps each and the free-for-all one heat of five laps.

The regatta will be "Mr. Mac" Trewin, Iain Rankin and Joseph "Pump" MacDonald, Clark of Summerside, who will be "Mr. Mac" and the starter, Clark of Summerside. Walter MacDonald will handle the pace boat.

John Dee, the British ambassador who died in 1908, was also a famous magician and noted mathematician.

P.E.I.'s Most Complete Farmers Store

Poultry Feeders, Waterers, Hog Feeders, Stock Bowls, Fly Spray, Insecticides, Dairy Pails and Supplies, Twine and necessary tools.

FEEDERS Who Keep Records Use MASTER Remember It's RESULTS That Count!

A complete line of Master feeds in stock at all times.

DILLON & SPILLET LTD. CHICK HATCHERY
79 Queen St. Charlottetown Dial 4-825

Parkview DRIVE-IN THEATRE BRACKLEY PT. RD.

THE CLASH OF TWO BRONX MEN—ONE CLOAKED IN EVIL, THE OTHER WEARING HIS FAITH LIKE A SHIELD!

DIRK BOGARDE • JOHN MILLS MYLENE DEMONGEOT

Show Starts at 8:00

THE SINGER NOT THE SONG

THE SECOND TIME AROUND

SHOWS 2:30 - 7 - 9

THURSDAY, FRIDAY & SATURDAY

BASEBALL SCORES

Boston 009 009 001 - 1 30
New York 001 009 008 - 6 30
Washington 001 001 001 - 3 00
Philadelphia 001 001 001 - 3 00
Cleveland 001 001 001 - 3 00
St. Louis 001 001 001 - 3 00
Pittsburgh 001 001 001 - 3 00
Chicago 001 001 001 - 3 00
Detroit 001 001 001 - 3 00
Milwaukee 001 001 001 - 3 00
Kansas City 001 001 001 - 3 00
Philadelphia 001 001 001 - 3 00
Cleveland 001 001 001 - 3 00
St. Louis 001 001 001 - 3 00
Pittsburgh 001 001 001 - 3 00
Chicago 001 001 001 - 3 00
Detroit 001 001 001 - 3 00
Milwaukee 001 001 001 - 3 00
Kansas City 001 001 001 - 3 00
Philadelphia 001 001 001 - 3 00
Cleveland 001 001 001 - 3 00
St. Louis 001 001 001 - 3 00
Pittsburgh 001 001 001 - 3 00
Chicago 001 001 001 - 3 00
Detroit 001 001 001 - 3 00
Milwaukee 001 001 001 - 3 00
Kansas City 001 001 001 - 3 00
Philadelphia 001 001 001 - 3 00
Cleveland 001 001 001 - 3 00
St. Louis 001 001 001 - 3 00
Pittsburgh 001 001 001 - 3 00
Chicago 001 001 001 - 3 00
Detroit 001 001 001 - 3 00
Milwaukee 001 001 001 - 3 00
Kansas City 001 001 001 - 3 00
Philadelphia 001 001 001 - 3 00
Cleveland 001 001 001 - 3 00
St. Louis 001 001 001 - 3 00
Pittsburgh 001 001 001 - 3 00
Chicago 001 001 001 - 3 00
Detroit 001 001 001 - 3 00
Milwaukee 001 001 001 - 3 00
Kansas City 001 001 001 - 3 00
Philadelphia 001 001 001 - 3 00
Cleveland 001 001 001 - 3 00
St. Louis 001 001 001 - 3 00
Pittsburgh 001 001 001 - 3 00
Chicago 001 001 001 - 3 00
Detroit 001 001 001 - 3 00
Milwaukee 001 001 001 - 3 00
Kansas City 001 001 001 - 3 00
Philadelphia 001 001 001 - 3 00
Cleveland 001 001 001 - 3 00
St. Louis 001 001 001 - 3 00
Pittsburgh 001 001 001 - 3 00
Chicago 001 001 001 - 3 00
Detroit 001 001 001 - 3 00
Milwaukee 001 001 001 - 3 00
Kansas City 001 001 001 - 3 00
Philadelphia 001 001 001 - 3 00
Cleveland 001 001 001 - 3 00
St. Louis 001 001 001 - 3 00
Pittsburgh 001 001 001 - 3 00
Chicago 001 001 001 - 3 00
Detroit 001 001 001 - 3 00
Milwaukee 001 001 001 - 3 00
Kansas City 001 001 001 - 3 00
Philadelphia 001 001 001 - 3 00
Cleveland 001 001 001 - 3 00
St. Louis 001 001 001 - 3 00
Pittsburgh 001 001 001 - 3 00
Chicago 001 001 001 - 3 00
Detroit 001 001 001 - 3 00
Milwaukee 001 001 001 - 3 00
Kansas City 001 001 001 - 3 00
Philadelphia 001 001 001 - 3 00
Cleveland 001 001 001 - 3 00
St. Louis 001 001 001 - 3 00
Pittsburgh 001 001 001 - 3 00
Chicago 001 001 001 - 3 00
Detroit 001 001 001 - 3 00
Milwaukee 001 001 001 - 3 00
Kansas City 001 001 001 - 3 00
Philadelphia 001 001 001 - 3 00
Cleveland 001 001 001 - 3 00
St. Louis 001 001 001 - 3 00
Pittsburgh 001 001 001 - 3 00
Chicago 001 001 001 - 3 00
Detroit 001 001 001 - 3 00
Milwaukee 001 001 001 - 3 00
Kansas City 001 001 001 - 3 00
Philadelphia 001 001 001 - 3 00
Cleveland 001 001 001 - 3 00
St. Louis 001 001 001 - 3 00
Pittsburgh 001 001 001 - 3 00
Chicago 001 001 001 - 3 00
Detroit 001 001 001 - 3 00
Milwaukee 001 001 001 - 3 00
Kansas City 001 001 001 - 3 00
Philadelphia 001 001 001 - 3 00
Cleveland 001 001 001 - 3 00
St. Louis 001 001 001 - 3 00
Pittsburgh 001 001 001 - 3 00
Chicago 001 001 001 - 3 00
Detroit 001 001 001 - 3 00
Milwaukee 001 001 001 - 3 00
Kansas City 001 001 001 - 3 00
Philadelphia 001 001 001 - 3 00
Cleveland 001 001 001 - 3 00
St. Louis 001 001 001 - 3 00
Pittsburgh 001 001 001 - 3 00
Chicago 001 001 001 - 3 00
Detroit 001 001 001 - 3 00
Milwaukee 001 001 001 - 3 00
Kansas City 001 001 001 - 3 00
Philadelphia 001 001 001 - 3 00
Cleveland 001 001 001 - 3 00
St. Louis 001 001 001 - 3 00
Pittsburgh 001 001 001 - 3 00
Chicago 001 001 001 - 3 00
Detroit 001 001 001 - 3 00
Milwaukee 001 001 001 - 3 00
Kansas City 001 001 001 - 3 00
Philadelphia 001 001 001 - 3 00
Cleveland 001 001 001 - 3 00
St. Louis 001 001 001 - 3 00
Pittsburgh 001 001 001 - 3 00
Chicago 001 001 001 - 3 00
Detroit 001 001 001 - 3 00
Milwaukee 001 001 001 - 3 00
Kansas City 001 001 001 - 3 00
Philadelphia 001 001 001 - 3 00
Cleveland 001 001 001 - 3 00
St. Louis 001 001 001 - 3 00
Pittsburgh 001 001 001 - 3 00
Chicago 001 001 001 - 3 00
Detroit 001 001 001 - 3 00
Milwaukee 001 001 001 - 3 00
Kansas City 001 001 001 - 3 00
Philadelphia 001 001 001 - 3 00
Cleveland 001 001 001 - 3 00
St. Louis 001 001 001 - 3 00
Pittsburgh 001 001 001 - 3 00
Chicago 001 001 001 - 3 00
Detroit 001 001 001 - 3 00
Milwaukee 001 001 001 - 3 00
Kansas City 001 001 001 - 3 00
Philadelphia 001 001 001 - 3 00
Cleveland 001 001 001 - 3 00
St. Louis 001 001 001 - 3 00
Pittsburgh 001 001 001 - 3 00
Chicago 001 001 001 - 3 00
Detroit 001 001 001 - 3 00
Milwaukee 001 001 001 - 3 00
Kansas City 001 001 001 - 3 00
Philadelphia 001 001 001 - 3 00
Cleveland 001 001 001 - 3 00
St. Louis 001 001 001 - 3 00
Pittsburgh 001 001 001 - 3 00
Chicago 001 001 001 - 3 00
Detroit 001 001 001 - 3 00
Milwaukee 001 001 001 - 3 00
Kansas City 001 001 001 - 3 00
Philadelphia 001 001 001 - 3 00
Cleveland 001 001 001 - 3 00
St. Louis 001 001 001 - 3 00
Pittsburgh 001 001 001 - 3 00
Chicago 001 001 001 - 3 00
Detroit 001 001 001 - 3 00
Milwaukee 001 001 001 - 3 00
Kansas City 001 001 001 - 3 00
Philadelphia 001 001 001 - 3 00
Cleveland 001 001 001 - 3 00
St. Louis 001 001 001 - 3 00
Pittsburgh 001 001 001 - 3 00
Chicago 001 001 001 - 3 00
Detroit 001 001 001 - 3 00
Milwaukee 001 001 001 - 3 00
Kansas City 001 001 001 - 3 00
Philadelphia 001 001 001 - 3 00
Cleveland 001 001 001 - 3 00
St. Louis 001 001 001 - 3 00
Pittsburgh 001 001 001 - 3 00
Chicago 001 001 001 - 3 00
Detroit 001 001 001 - 3 00
Milwaukee 001 001 001 - 3 00
Kansas City 001 001 001 - 3 00
Philadelphia 001 001 001 - 3 00
Cleveland 001 001 001 - 3 00
St. Louis 001 001 001 - 3 00
Pittsburgh 001 001 001 - 3 00
Chicago 001 001 001 - 3 00
Detroit 001 001 001 - 3 00
Milwaukee 001 001 001 - 3 00
Kansas City 001 001 001 - 3 00
Philadelphia 001 001 001 - 3 00
Cleveland 001 001 001 - 3 00
St. Louis 001 001 001 - 3 00
Pittsburgh 001 001 001 - 3 00
Chicago 001 001 001 - 3 00
Detroit 001 001 001 - 3 00
Milwaukee 001 001 001 - 3 00
Kansas City 001 001 001 - 3 00
Philadelphia 001 001 001 - 3 00
Cleveland 001 001 001 - 3 00
St. Louis 001 001 001 - 3 00
Pittsburgh 001 001 001 - 3 00
Chicago 001 001 001 - 3 00
Detroit 001 001 001 - 3 00
Milwaukee 001 001 001 - 3 00
Kansas City 001 001 001 - 3 00
Philadelphia 001 001 001 - 3 00
Cleveland 001 001 001 - 3 00
St. Louis 001 001 001 - 3 00
Pittsburgh 001 001 001 - 3 00
Chicago 001 001 001 - 3 00
Detroit 001 001 001 - 3 00
Milwaukee 001 001 001 - 3 00
Kansas City 001 001 001 - 3 00
Philadelphia 001 001 001 - 3 00
Cleveland 001 001 001 - 3 00
St. Louis 001 001 001 - 3 00
Pittsburgh 001 001 001 - 3 00
Chicago 001 001 001 - 3 00
Detroit 001 001 001 - 3 00
Milwaukee 001 001 001 - 3 00
Kansas City 001 001 001 - 3 00
Philadelphia 001 001 001 - 3 00
Cleveland 001 001 001 - 3 00
St. Louis 001 001 001 - 3 00
Pittsburgh 001 001 001 - 3 00
Chicago 001 001 001 - 3 00
Detroit 001 001 001 - 3 00
Milwaukee 001 001 001 - 3 00
Kansas City 001 001 001 - 3 00
Philadelphia 001 001 001 - 3 00
Cleveland 001 001 001 - 3 00
St. Louis 001 001 001 - 3 00
Pittsburgh 001 001 001 - 3 00
Chicago 001 001 001 - 3 00
Detroit 001 001 001 - 3 00
Milwaukee 001 001 001 - 3 00
Kansas City 001 001 001 - 3 00
Philadelphia 001 001 001 - 3 00
Cleveland 001 001 001 - 3 00
St. Louis 001 001 001 - 3 00
Pittsburgh 001 001 001 - 3 00
Chicago 001 001 001 - 3 00
Detroit 001 001 001 - 3 00
Milwaukee 001 001 001 - 3 00
Kansas City 001 001 001 - 3 00
Philadelphia 001 001 001 - 3 00
Cleveland 001 001 001 - 3 00
St. Louis 001 001 001 - 3 00
Pittsburgh 001 001 001 - 3 00
Chicago 001 001 001 - 3 00
Detroit 001 001 001 - 3 00
Milwaukee 001 001 001 - 3 00
Kansas City 001 001 001 - 3 00
Philadelphia 001 001 001 - 3 00
Cleveland 001 001 001 - 3 00
St. Louis 001 001 001 - 3 00
Pittsburgh 001 001 001 - 3 00
Chicago 001 001 001 - 3 00
Detroit 001 001 001 - 3 00
Milwaukee 001 001 001 - 3 00
Kansas City 001 001 001 - 3 00
Philadelphia 001 001 001 - 3 00
Cleveland 001 001 001 - 3 00
St. Louis 001 001 001 - 3 00
Pittsburgh 001 001 001 - 3 00
Chicago 001 001 001 - 3 00
Detroit 001 001 001 - 3 00
Milwaukee 001 001 001 - 3 00
Kansas City 001 001 001 - 3 00
Philadelphia 001 001 001 - 3 00
Cleveland 001 001 001 - 3 00
St. Louis 001 001 001 - 3 00
Pittsburgh 001 001 001 - 3 00
Chicago 001 001 001 - 3 00
Detroit 001 001 001 - 3 00
Milwaukee 001 001 001 - 3 00
Kansas City 001 001 001 - 3 00
Philadelphia 001 001 001 - 3 00
Cleveland 001 001 001 - 3 00
St. Louis 001 001 001 - 3 00
Pittsburgh 001 001 001 - 3 00
Chicago 001 001 001 - 3 00
Detroit 001 001 001 - 3 00
Milwaukee 001 001 001 - 3 00
Kansas City 001 001 001 - 3 00
Philadelphia 001 001 001 - 3 00
Cleveland 001 001 001 - 3 00
St. Louis 001 001 001 - 3 00
Pittsburgh 001 001 001 - 3 00
Chicago 001 001 001 - 3 00
Detroit 001 001 001 - 3 00
Milwaukee 001 001 001 - 3 00
Kansas City 001 001 001 - 3 00
Philadelphia 001 001 001 - 3 00
Cleveland 001 001 001 - 3 00
St. Louis 001 001 001 - 3 00
Pittsburgh 001 001 001 - 3 00
Chicago 001 001 001 - 3 00
Detroit 001 001 001 - 3 00
Milwaukee 001 001 001 - 3 00
Kansas City 001 001 001 - 3 00
Philadelphia 001 001 001 - 3 00
Cleveland 001 001 001 - 3 00
St. Louis 001 001 001 - 3 00
Pittsburgh 001 001 001 - 3 00
Chicago 001 001 001 - 3 00
Detroit 001 001 001 - 3 00
Milwaukee 001 001 001 - 3 00
Kansas City 001 001 001 - 3 00
Philadelphia 001 001 001 - 3 00
Cleveland 001 001 001 - 3 00
St. Louis 001 001 001 - 3 00
Pittsburgh 001 001 001 - 3 00
Chicago 001 001 001 - 3 00
Detroit 001 001 001 - 3 00
Milwaukee 001 001 001 - 3 00
Kansas City 001 001 001 - 3 00
Philadelphia 001 001 001 - 3 00
Cleveland 001 001 001 - 3 00
St. Louis 001 001 001 - 3 00
Pittsburgh 001 001 001 - 3 00
Chicago 001 001 001 - 3 00
Detroit 001 001 001 - 3 00
Milwaukee 001 001 001 - 3 00
Kansas City 001 001 001 - 3 00
Philadelphia 001 001 001 - 3 00
Cleveland 001 001 001 - 3 00
St. Louis 001 001 001 - 3 00
Pittsburgh 001 001 001 - 3 00
Chicago 001 001 001 - 3 00
Detroit 001 001 001 - 3 00
Milwaukee 001 001 001 - 3 00
Kansas City 001 001 001 - 3 00
Philadelphia 001 001 001 - 3 00
Cleveland 001 001 001 - 3 00
St. Louis 001 001 001 - 3 00
Pittsburgh 001 001 001 - 3 00
Chicago 001 001 001 - 3 00
Detroit 001 001 001 - 3 00
Milwaukee 001 001 001 - 3 00
Kansas City 001 001 001 - 3 00
Philadelphia 001 001 001 - 3 00
Cleveland 001 001 001 - 3 00
St. Louis 001 001 001 - 3 00
Pittsburgh 001 001 001 - 3 00
Chicago 001 001 001 - 3 00
Detroit 001 001 001 - 3 00
Milwaukee 001 001 001 - 3 00
Kansas City 001 001 001 - 3 00
Philadelphia 001 001 001 - 3 00
Cleveland 001 001 001 - 3 00
St. Louis 001 001 001 - 3 00
Pittsburgh 001 001 001 - 3 00
Chicago 001 001 001 - 3 00
Detroit 001 001 001 - 3 00
Milwaukee 001 001 001 - 3 00
Kansas City 001 001 001 - 3 00
Philadelphia 001 001 001 - 3 00
Cleveland 001 001 001 - 3 00
St. Louis 001 001 001 - 3 00
Pittsburgh 00