

# Environmental Supplement

## Environmental facts

1. Duffy building goes through approx. 144 rolls of toilet paper every week (5424 a year), 40 of which are swiped by someone who is too cheap to go out and buy some. Duffy has:
  - 12 stalls
  - 2 rolls per stall/day
  - X 6 days = 144 or 24 X 226 = 5424
2. Approx. 678 pens are lost every year in Duffy.
  - 226 school days
  - X 3 pens a day
  - = 678
3. Approx. 40 bags of garbage are chucked every day from Duffy, Main and Memorial. That makes 240 bags a week and 9040 a year
 

226 days	12 bags - Duffy
X 40 bags	18 bags - Main
= 9040	10 bags - Memorial

By: Jason Roberts



SAVE  
OUR TREES

## One person can make a difference Reducing waste made easy for everyone

By C.A. Schneider  
HAVE YOU EVER WONDERED HOW YOU could help in the fight to save our home planet? Many people, including students, ask that very question only to decide that one person can't make that much of a difference. They are wrong about that. One person living by the three Rs --reduce, reuse, recycle-- can relieve the landfills of much of the waste that usually ends up there. According to a 1992 study of landfills and garbage in Milwaukee, the average amount of household waste taken to landfills is 1.9 pounds per person per day. Seems like a lot doesn't it. That's because it is a lot, in one year a person contributes up to 694 pounds of waste. With all the millions of people who share this earth, that makes a heck of a lot of garbage.

All this waste has to go somewhere and the storage facilities are quickly filling up. The search for new sites runs into problems because people fight to keep new landfills away from their neighbourhoods. This "not in my backyard" mindset is leading the Earth towards a garbage crisis that may well end life as we know it. This crisis is inevitable unless we all chip in and do our part to protect our environment from our own wastefulness.

The three Rs are the easiest way to accomplish our goal of cutting our waste. Reducing, reusing and recycling (who hasn't heard of it?) are all rather painless once you get used to the lifestyle. According to the Milwaukee study the majority of the waste taken to the landfills can be taken care of through one or more of the three Rs.

As scary as it sounds, the first R is probably the easiest one to accomplish. Reducing means lowering your waste output by doing simple things like using a ceramic, or plastic, plate and cup when you get food from the cafeteria, even when it's take-out, or choosing not to buy individually packaged cheese slices. Neither of these sound like very big things; however when you think about how much waste you save over the course of a year, you realize how much these simple things add up to. Reducing also means using the other two Rs to reduce your waste output.

Reusing covers many different areas of waste. It may mean something as complex as composting food waste or something as simple as reusing your plastic grocery bags everytime you shop. Composting is a wonderful way of reducing your household waste because it goes beyond reduction. When food

wastes are composted, inside or out, they are broken down into a natural fertilizer that can be used for commercial or personal use.

There are three different types of composting: backyard, indoor, or commercial composting. Backyard composting means forming a compost pile, usually in the corner of a

food waste is compostable; however it is not recommended that backyard or indoor composters put meat, bones, fish or dairy products in their compost as all these things will attract small animals. Coffee grounds and filters, tea bags egg shells and vegetable scraps make wonderful compost regardless of the setting.

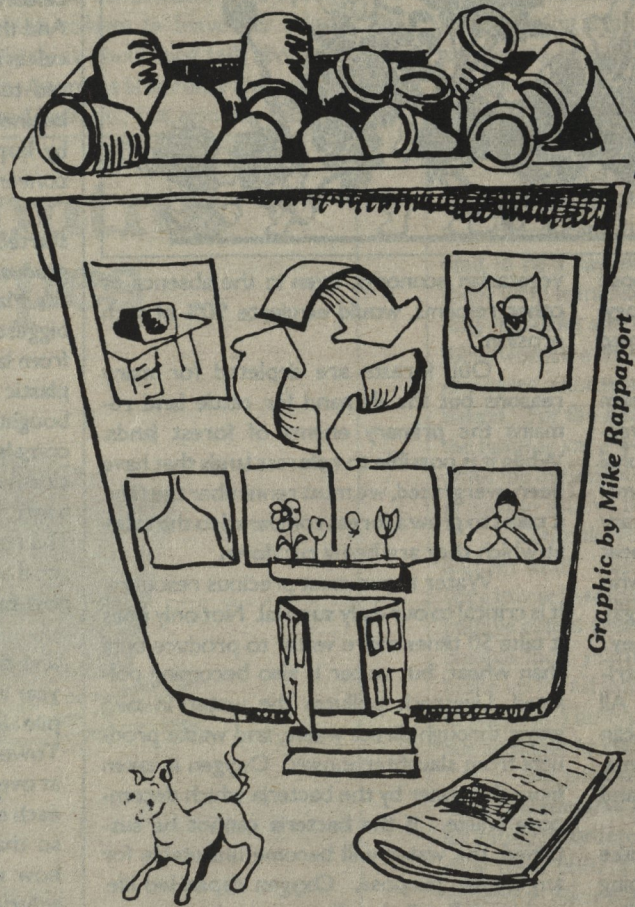
Non-waxed cardboard, sawdust, animal or human hair as well as house and garden plant waste are also compostable. All of these items add to the content of the compost to make it as rich as it can be.

Composting is the extreme of the reusing set. There are many other ways to cut waste by reusing. Many communities have weeks when they ask people to put out their large pieces of garbage such as old furniture, old toys etc and people are invited to take anything that they would find useful before the garbage picks it up. You can use cloth shopping bags and avoid plastic ones, or reuse the same plastic ones until they are worn out. Then you proceed to the next step in cutting waste, recycling.

Recycling is a form of reusing where the wastes are not immediately reused, but remade first. Such items as plastic bags, cans, paper, corrugated cardboard and bottles are all recyclable. Plastic bags are collected in recycling boxes at many grocery stores. So the next time you go to the store take along that closest full of plastic and spend the rest of

your life wondering if this bag was made of the one you turned in years ago. Metal cans ranging from pop cans to soup cans are also recyclable. Most recycling depots ask that you rinse the cans out and crush them with the lid inside the can. Aerosol cans, paint cans, frozen juice containers, and metal pots are not recyclable. All non-glossy paper and non-waxed corrugated cardboard is also recyclable. Juice, beer and pop bottles are also recyclable, the bottle depots will take these and possibly even give you some money for them. Glass is a huge part of what is filling up the waste storage areas so please make an effort to recycle it.

Taking care of our environment is part of every man, woman and child's responsibility. We depend on the earth, if she can't depend on us neither of us have a future. Even a little bit of waste you cut gives the earth, our home, a better chance of survival our future generations are depending on it.



Graphic by Mike Rappaport

garden or yard, where the food waste can decay without disturbing the residents. Indoor composting usually involves keeping a closed bucket in a warm dark area of a house. This type of composting is not for the squeamish since the bucket is stocked with worms to break the wastes down into an extremely fertile top soil. Many of the larger universities have composters such as this in their residences to cut down on the output of waste from the buildings. Commercial composting means that food wastes are separated from other waste and picked up by a company, or community to be used in making commercially sold top soil and fertilizer. All three types of composting are effective in cutting the amount of waste that hits the landfills by cutting the food waste almost completely out of the equation.

Composting has some very specific rules as to what is acceptable and what is not. As far as commercial composting goes, any