

# Clean seed necessity is stressed by division

(The importance of cleaning grain to remove weed seed and leave only the best seed, and of treating grain to control smut and several other undesirable pests, is emphasized by Donald Stewart, Plant Products Division, Canada Department of Agriculture, in this article specially written for the farm edition of The Guardian and Evening Patriot.)

Seed Drill surveys and observations have shown that much of the seed grain sown on P.E. Island is not up to the standard of Canada No. 1 Seed. There is, however, a distinct difference in the quality of the seed when you consider where and how it was cleaned. There is still altogether too much grain sown that is not cleaned at all. In almost every case, the weed seed content of this grain is very high and it should definitely be put through a cleaner.

You can often do a good job with a hand fan if you give it enough wind and run the grain through slow enough. Of course, the proper screens are essential. Having no clipper you do not break up some of the pods such as spurry and you could have a lot of these. In general, running the seed through the combine to clean it does not do a satisfactory job.

The best method is have it cleaned by one of the power cleaners operating on the Island. There are approximately

50 power machines, and, given grain that can be cleaned, they usually do a good job.

## LOTS OF WIND

The quality work done by these machines depends on the operator and the farmer combined. The farmer must take in enough seed that the operator can remove the light seeds and small ones. Contrary to popular opinion in some parts of the province, these small oats are not "female" oats and you will get a much better crop with the small and light oats removed. Let the operator use lots of wind. In order to get all this small light material out, naturally, you will remove some good oats. Don't worry about this. It is not lost, you can grind this for feed.

Take your seed in as soon as possible before the big rush comes on. The operator has a move time to clean your seed early and you often get a better job. Don't wait till you are ready to sow. Some are frightened of mouse damage to bags stored at home after cleaning. A little sulphur sprinkled on the bags all around the outside of the pile will usually keep mice away. They will not walk in it. You can not expect an operator to remove all the wild radish seed from grain. This and other weeds must be kept down in the seed you sow but you have to keep them under control in the growing crop. Do some of your 1963 seed cleaning with weed

diseases. Information indicates that increased yields of a anywhere from one to five bushels per acre may be expected. The usual cost of treatment is in the vicinity of 25 cents per 100 pounds of seed, so returns on the investment would be very high. It takes less than one-half bushel increase per acre on oats to pay for the treatment for one acre.

## CERTIFIED SEED

If you are in doubt about the purity of your variety, and this is important for even ripening for combining, then buy certified seed. All certified seed is sealed in the bag with a metal seal and has a blue official tag attached. Canada No. 1 Seed is the next best and you can only get an assurance of variety if you buy it from somebody who grew it from Registered or Certified Seed.

You may be in doubt about the weed seed content or the germination of your seed grain. If so, send a one pound sample of the grain along with 75 cents to Plant Products Division, P.O. Box 220, Sackville, N.B. They will send you a certificate giving you these particulars. Allow about 14 days for an answer. Be sure to enclose your name and address.

## 14 TREATERS OPERATE

There will be fourteen liquid treaters and one dust treater operating in the province this year. These can do an excellent job of treating your grain. This treatment controls smut and in addition controls root rots, seedling blight, and other seed borne

## TOBACCO

CONTINUED FROM PAGE 1-A

1,400 pounds per acre, it was learned from Marcel Moyart who has built a second greenhouse at Upper Montague and plans to grow up to 30 acres this year. Several growers are building plastic greenhouses at 25 per cent the cost of the glass variety.

An experienced grower, he was satisfied with his crop, the first grown on his farm but expects to step up production considerably in future years.

**PALMER ELECTRIC**  
SELL, INSTALL & SERVICE  
DE LAVAL  
DAIRY FARM  
EQUIPMENT  
Palmer Electric Ltd.  
Charlottetown Dial 4-8543  
Summerside Dial 5514

## SEED TREATMENT

The Seed Cleaning plants listed have purchased seed treaters. Be sure to have grain treated as well as cleaned.

- Boates Feed Service ..... O'Leary
- Alfred DesRoche ..... Miscouche
- Ross' Corner Feed Service, No. Bedeque
- Delaney's Feed Service .... Kensington
- Wilfred Pickering ..... Clinton
- Glen Waddell ..... Cape Traverse
- E. D. Ives & Co. .... North Tryon
- Everett Gallant .... Oyster Bed Bridge
- Canada Packers Ltd. .. Charlottetown
- Earl Ings ..... Mt. Herbert
- Fraser & Annear ..... Montague
- D. A. MacRae ..... Heatherdale
- Russell White & Son ..... Brookfield
- Canada Packers, Summerside Machines
- Ira MacDonald .. Covehead | on Order

Treating gives yield increases from two to four bushels per acre. Root Rot and seed born diseases as well as smut are controlled. If a treater is not available use a mercury dust at home.

TREAT SEED EVERY YEAR  
P. E. I. Department of Agriculture

## SPORTSWEAR

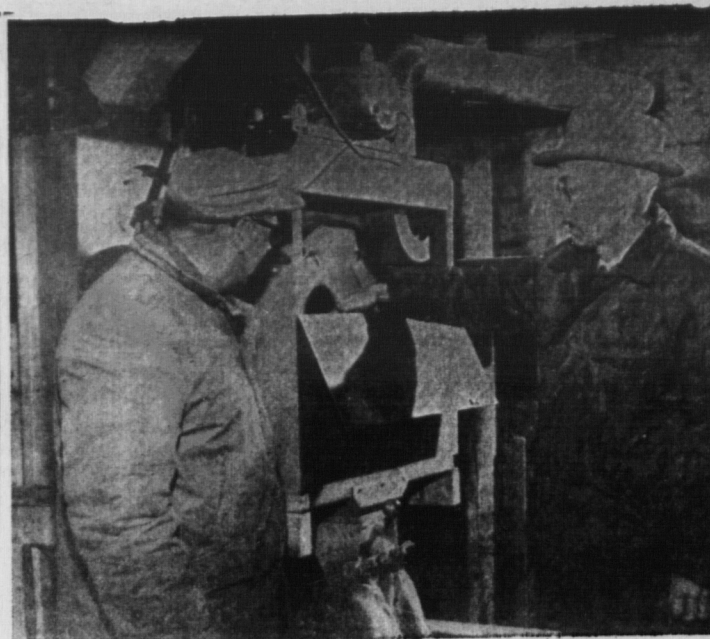
New arrivals daily in new washable materials and the latest styles at very reasonable prices.

- Blouses
- Slim Jims
- Car Coats
- Sweaters
- Bathing Suits
- Pedal Pushers
- Skirts
- T Shirts
- Jackets
- Halters
- Shorts
- Blazers

OPEN ALL DAY SATURDAY

## THE FASHION SHOPPE

141 Great George St. Dial 4-3355



MR. STEWART, gives some pointers on operation of a Panogen seed treating machine to Charles Roberts, North Tryon who has purchased one.

## DISEASE

CONTINUED FROM PAGE 1-A grants to existing organizations and participation in Canada-wide testing programs.

"It is interesting to note that strains of poultry developed in this province are performing exceptionally well in Canada-wide tests. The availability of these high-producing strains of poultry can save our poultry farmers substantial amounts in the purchase price of day-old chicks."

Mr. MacRae said that an additional man will be employed in the quality control section of the dairy division of the department. "His duties," he said, "will be in connection with our processing plants such as cheese factories and creameries."

## IMPROVEMENT PROGRAM

"Each year sees an increased number participating in our dairy herd improvement program, and we expect an even greater number this year. Further assistance is also being offered, as part of our livestock promotion program, in the importing of quality breeding stock in sheep, swine and cattle."

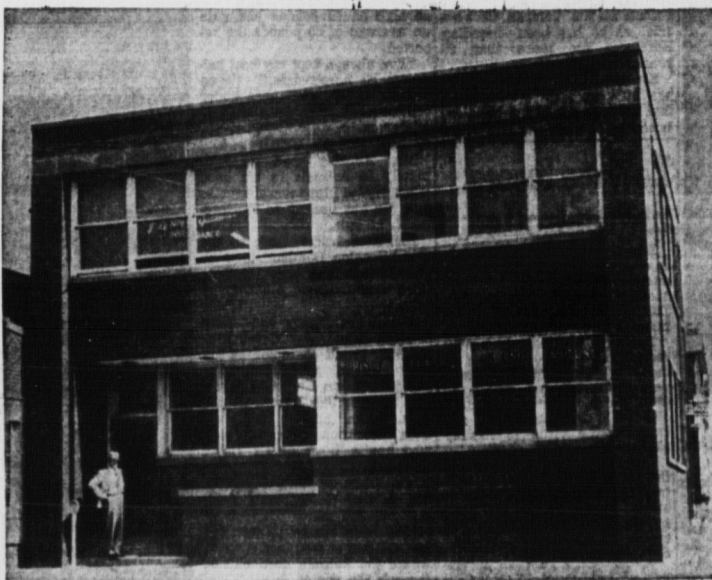
Pointing out that exhibitions are important both to farmers and tourists, Mr. MacRae said "my department will increase its appropriations to the various exhibitions to help them expand and improve their facilities." Noting how important the province's tobacco crop had been, Mr. MacRae said "this year we expect to increase our departmental acreage to 30 or 35 acres at our farm at Greenfield which will make this operation an economic unit."

Pointing out that there is an "unlimited demand" for high-quality cheese, Mr. MacRae said his department will pay a subsidy for all cheese manufactured this year "with a score of 84 or higher to encourage more production of top-quality cheese."

Mr. MacRae said that if farmers are to compete effectively in the production of their crops they should use the most efficient methods available. "That is why," he said, "that the department of agriculture has its soil testing laboratory and this year we have increased our equipment because of the increase in the number of soil samples being tested. All farmers should take advantage of this free service as only by having an extensive knowledge of the soil can they apply the correct fertilizer. In fact, many farmers could reduce their fertilizer bills if they were to use this service effectively."

"Also, this year, we have increased the amount of money available for limestone assistance." Stating that if young people are to be encouraged to take up farming as a career then they must be given assistance, the minister went on to say "we do this through our farm establishment board."

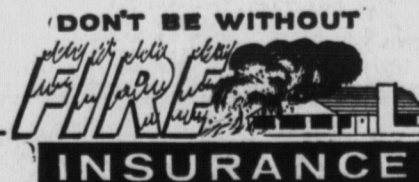
# OVER SEVENTY-EIGHT YEARS OF CONTINUOUS SERVICE TO ISLAND FARMERS



## SUFFICIENT INSURANCE IS YOUR ONLY ASSURANCE

### AN IMPORTANT MESSAGE:

THIS COMPANY HAS BEEN SERVING ISLANDERS FOR OVER SEVENTY-EIGHT YEARS AND HAS SAVED THE POLICY HOLDERS MANY MILLIONS OF DOLLARS. ALL THE PREMIUM INCOME STAYS ON PRINCE EDWARD ISLAND.



ONE OF OUR REPRESENTATIVES IS NEAR YOU. FEEL FREE AT ANY TIME TO ASK ABOUT YOUR INSURANCE REQUIREMENTS AT NO COST OR OBLIGATION TO YOU. SUFFICIENT INSURANCE ON YOUR FARM GIVES YOU THE ASSURANCE OF SECURITY FROM FEAR AND WORRY.

### - AGENTS THROUGHOUT THE PROVINCE TO SERVE YOU -

- Errol Stetson, O'Leary
- Clifford Simpson, Stanley Bridge
- S. B. Birch, Northam, E.E.
- M. E. MacLean, North Wiltshire
- Allee Gallant, Wellington
- A. J. Robertson, Charlottetown
- W. V. Craig, Bedeque
- James MacKay, Charlottetown

### -DIRECTORS-

- E. W. Johnstone, Burlington President
- T. L. Linkletter, Summerside Secretary-Treasurer
- Chessel Annear, Lower Montague
- Gregor MacCallum, Brackley Beach Vice-President
- John MacIntosh, Tignish
- Erie Lowther, Crapaud
- Albert Linkletter, Linkletter
- J. B. Edwin Reid, Bello Bay

## P.E.I. Mutual Fire Insurance Co.

"A Purely Mutual Company"

T. LELAND LINKLETTER -- Summerside Manager

HEAD OFFICE, WATER ST., SUMMERSIDE, DIAL 6-3258

BRANCH OFFICE 111 GRAFTON ST., CHARLOTTETOWN, DIAL 4-8037

**GRANDSIRE**  
The grandsire, both of them being champions at the Royal